



BUILDING LEGEND:

- CLASSROOMS
- CIRCULATION
- ADMIN/SUPPORT



LEFT



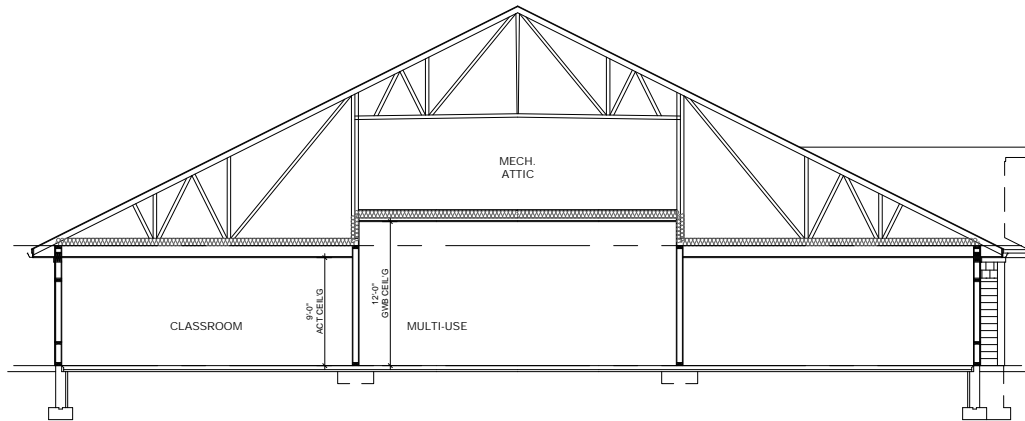
FRONT

ROOF-1
TRIM-1
SIDING-2
TRIM-1
SIDING-1

10'-0"

TOP OF PLATE
EL: 193.0'

GROUND
EL: 183.0'



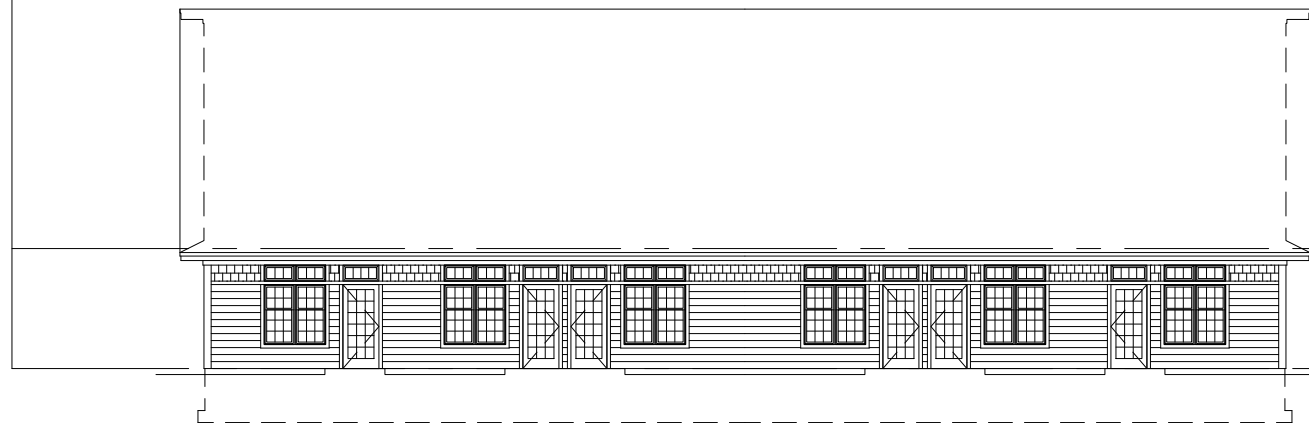
SECTION

EXTERIOR MATERIALS KEY:	
SIDING-1	CERTAINTED MAINSTREET HORIZONTAL VINYL SIDING, DOUBLE 5" WOODGRAIN CLAPBOARD, COLOR FLAGSTONE
SIDING-2	CERTAINTED CEDAR IMPRESSIONS VINYL SIDING, TRIPLE 5" STRAIGHT EDGE SAWMILL SHINGLES, COLOR PACIFIC BLUE
TRIM-1	AZEK RABBETED PVC TRIM, TRADITIONAL FINISH, COLOR WHITE
ROOF-1	CERTAINTED LANDMARK TL ARCHITECTURAL STYLE ASPHALT ROOF SHIGLES, COLOR COUNTRY GRAY

10'-0"

TOP OF PLATE
EL: 193.0'

GROUND
EL: 183.0'



REAR



RIGHT

10'-0"

TOP OF PLATE
EL: 193.0'

GROUND
EL: 183.0'