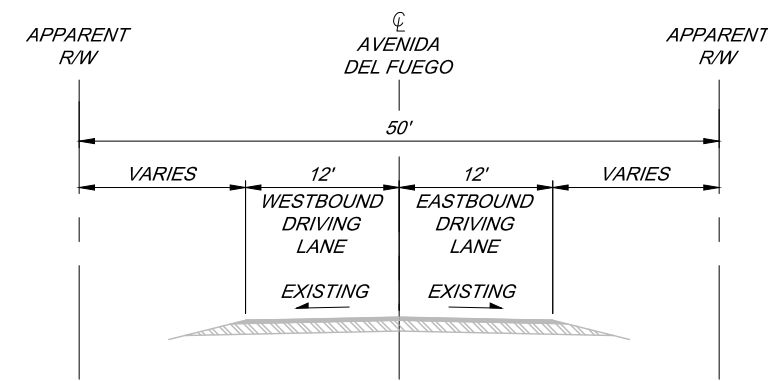
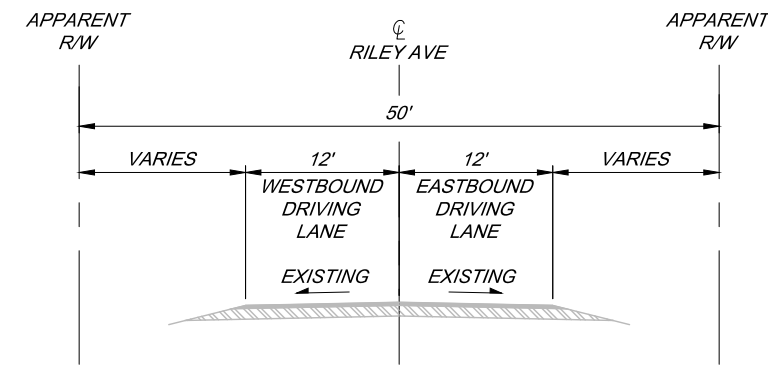
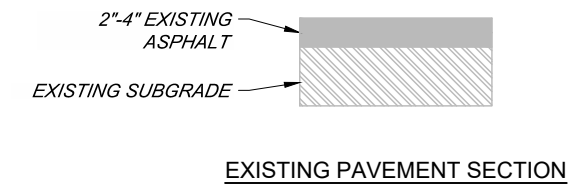




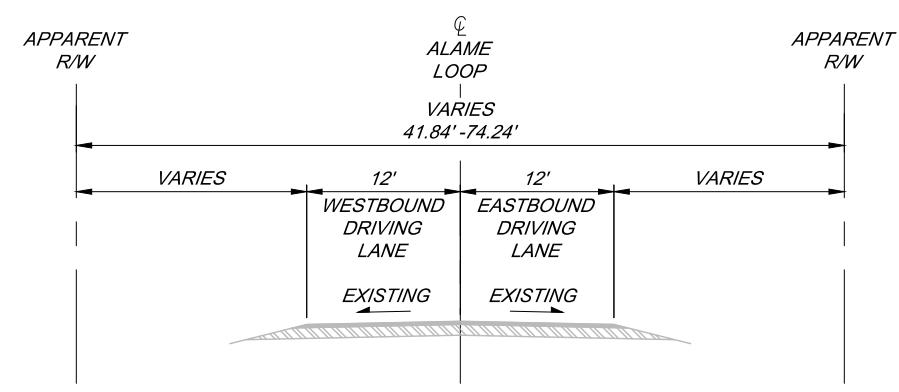
CITY OF RIO COMMUNITIES



**EXISTING TYPICAL SECTION 1**  
STA. 10+49.56 TO STA. 23+83.72



**EXISTING TYPICAL SECTION 1**  
STA. 50+54.59 TO STA. 52+23.60



**EXISTING TYPICAL SECTION 2**  
STA. 100+32.35 TO STA. 101+41.35

**HR** 2155 LOUISIANA BLVD NE,  
SUITE 3000  
ALBUQUERQUE, NM 87110  
(505) 830-5400



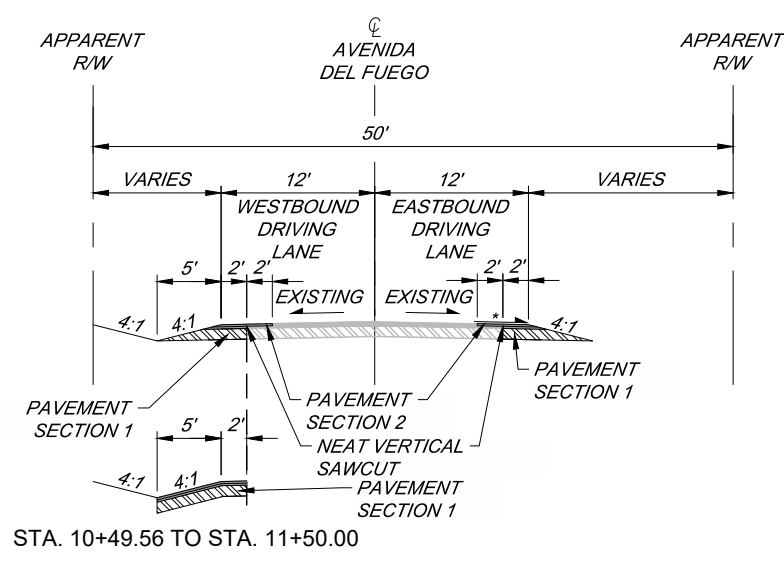
NO.	DESCRIPTION	DATE	BY
4			
3			
2			
1			

CN #####  
DHSEM PROJECTS  
EXISTING TYPICAL SECTIONS

DATE: 9 Dec 2022 - 2:26pm USER: ZSHARP



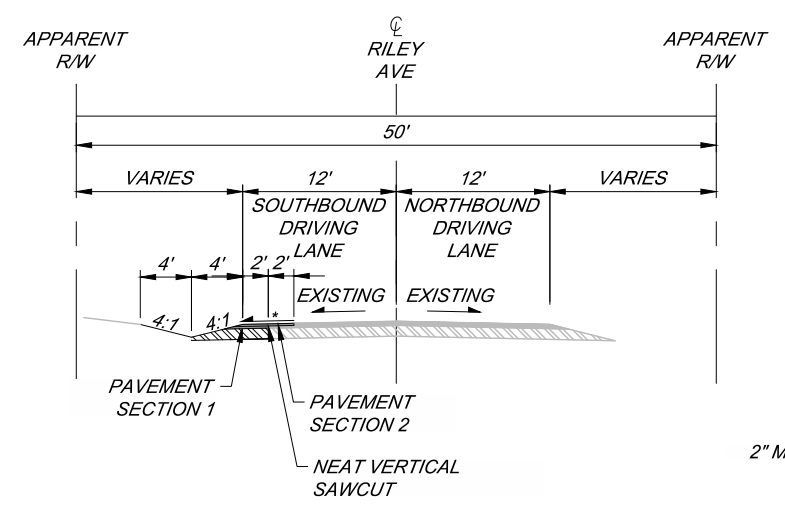
CITY OF RIO COMMUNITIES



**PROPOSED TYPICAL SECTION 1**

STA. 10+49.56 TO STA. 11+50.00  
STA. 11+50.00 TO STA. 14+82.27

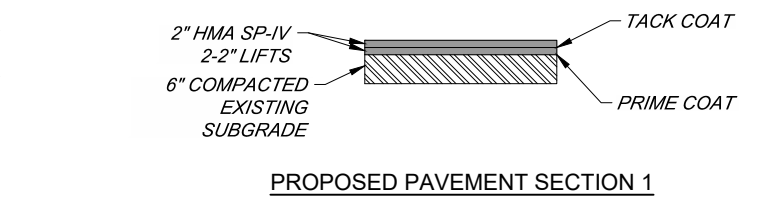
TRANSITION  
STA. 14+82.27 TO STA. 15+41.27 (LA LUNA PLACE)



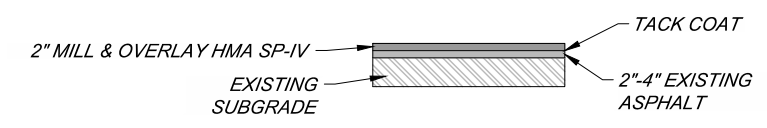
**PROPOSED TYPICAL SECTION 3**

STA. 10+54.59 TO STA. 11+34.59

TRANSITION  
STA. 11+34.59 TO STA. 12+23.60 (RILEY PLACE DRIVEWAY)

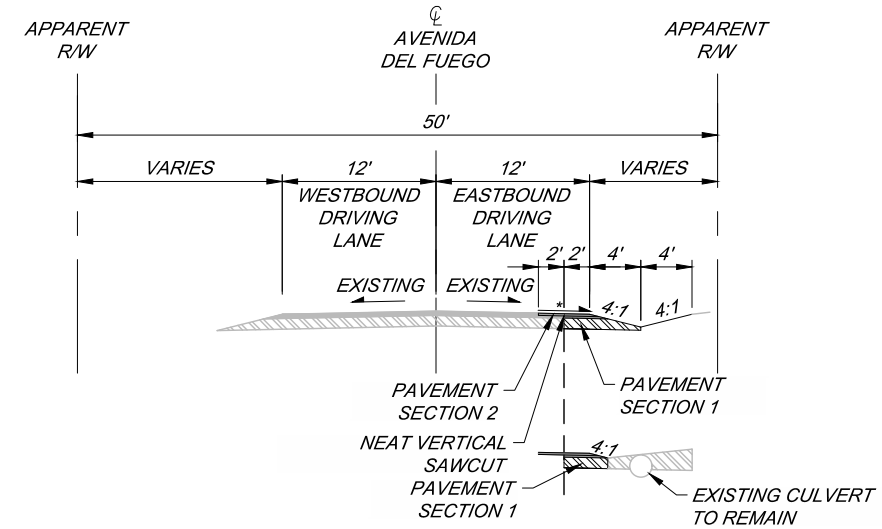


**PROPOSED PAVEMENT SECTION 1**



**PROPOSED PAVEMENT SECTION 2**

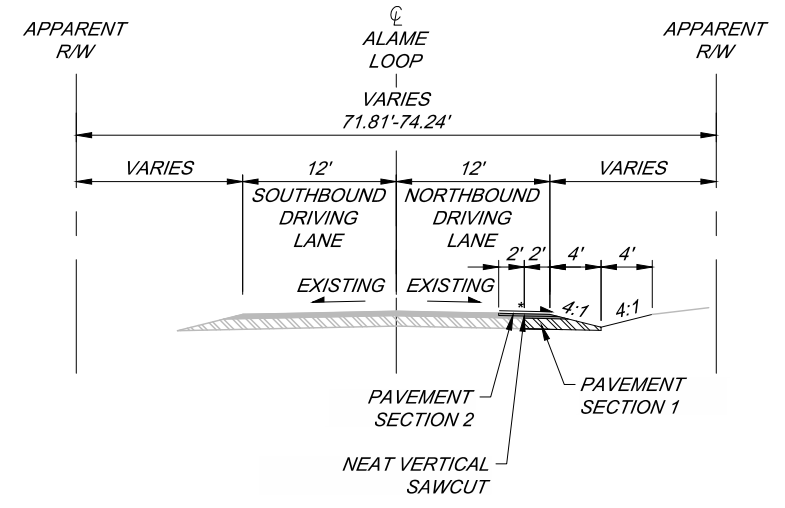
NOTES  
\* MATCH ADJACENT LANE SLOPE



**PROPOSED TYPICAL SECTION 2**

STA. 22+83.72 TO STA. 23+83.72

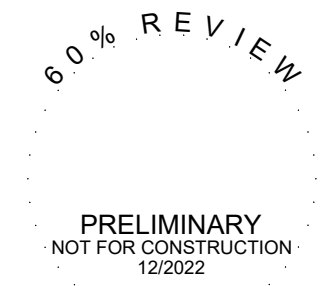
STA. 23+06.72 TO STA. 23+51.72



**PROPOSED TYPICAL SECTION 4**

STA. 100+32.35 TO STA. 101+41.35

**HR** 2155 LOUISIANA BLVD NE,  
SUITE 3000  
ALBUQUERQUE, NM 87110  
(505) 830-5400



NO.	DESCRIPTION	DATE	BY
4			
3			
2			
1			

CN #####  
DHSEM PROJECTS  
PROPOSED TYPICAL SECTIONS

DATE: 9 Dec 2022 - 2:26pm USER: ZSHARP





CITY OF RIO COMMUNITIES

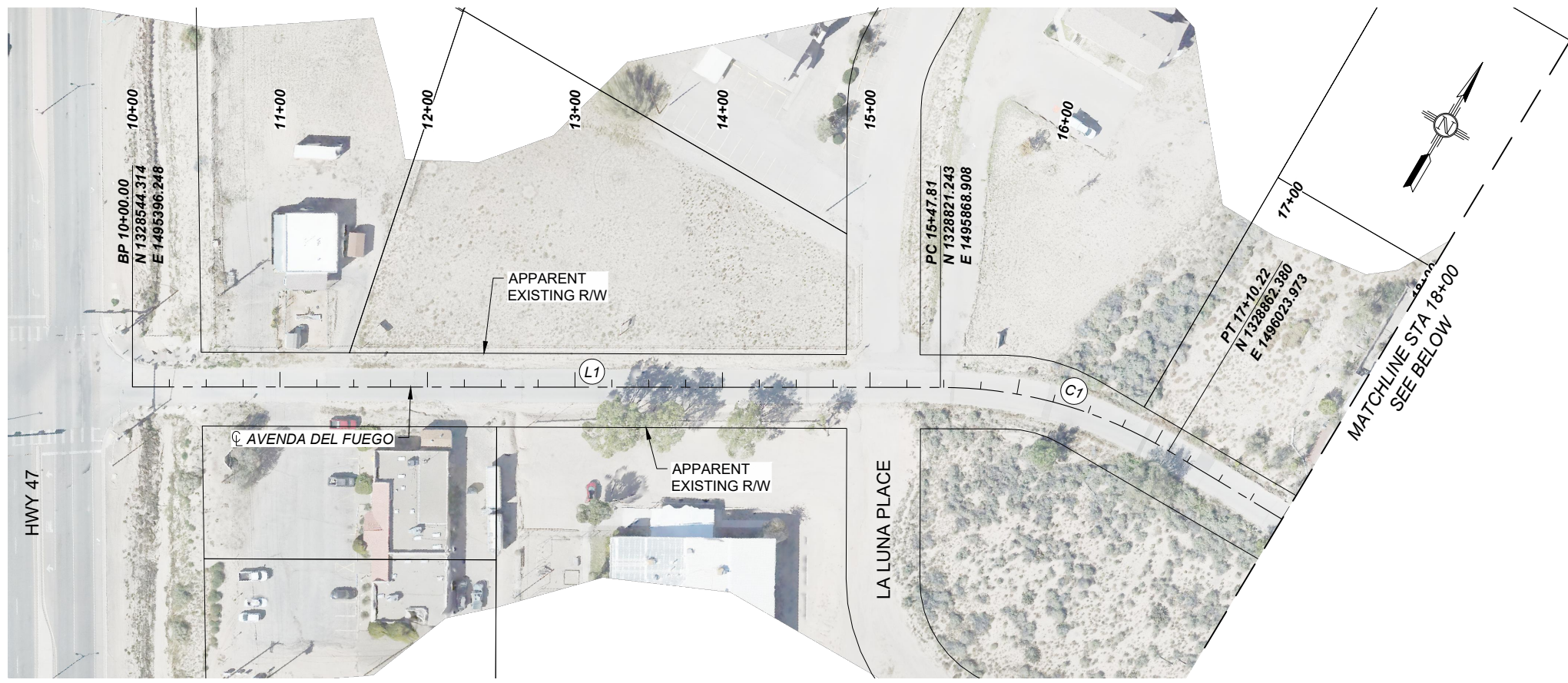
NO.	DESCRIPTION	DATE	BY
4			
3			
2			
1			

CN #####  
DHSEM PROJECTS  
HORIZONTAL LAYOUT PLAN

**HR** 2155 LOUISIANA BLVD NE,  
SUITE 3000  
ALBUQUERQUE, NM 87110  
(505) 830-5400

60% REVIEW

PRELIMINARY  
NOT FOR CONSTRUCTION  
12/2022



AVENIDA DEL FUEGO

SCALE: 1"=100'



AVENIDA DEL FUEGO

SCALE: 1"=100'

NUMBER	LENGTH	BEARING	TANGENT	Δ DELTA	RADIUS
L1	547.81'	N59°38'02.88"E			
C1	162.40'		83.25'	31°01'01.12"	300.00'
L2	714.78'	S89°20'56.00"E			

DATE: 9 Dec 2022 - 2:27pm USER: ZSHARP

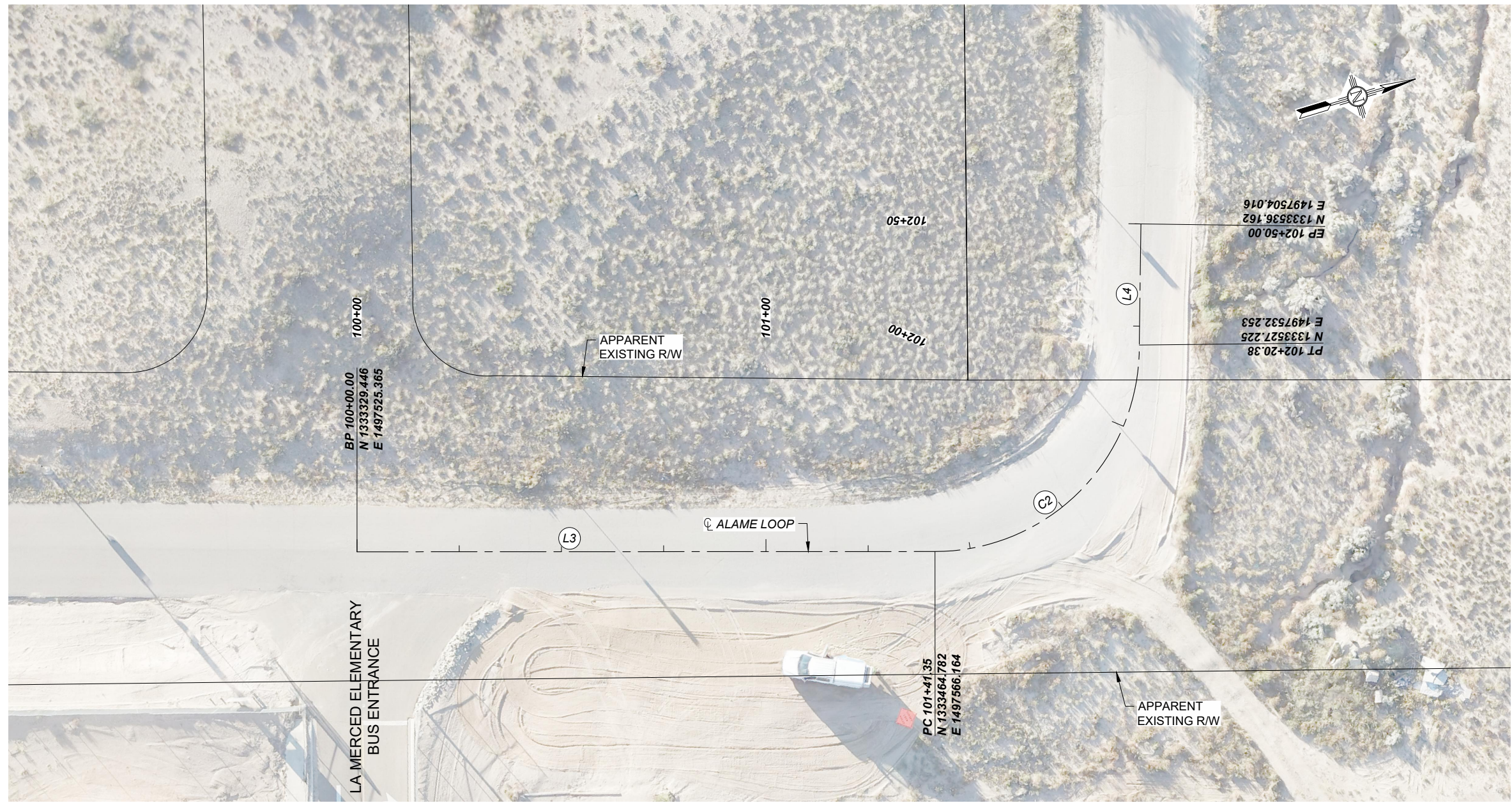




CITY OF RIO COMMUNITIES

NO.	DESCRIPTION	DATE	BY
4			
3			
2			
1			

CN #####  
 DHSEM PROJECTS  
 HORIZONTAL LAYOUT PLAN



ALAME LOOP

SCALE: 1"=30'

NUMBER	LENGTH	BEARING	TANGENT	Δ DELTA	RADIUS
L3	141.35'	N16°46'34.23"E			
C2	79.03'		50.49'	90°33'44.63"	50.00'
L4	29.62'	N72°26'15.86"W			

**HR** 2155 LOUISIANA BLVD NE,  
 SUITE 3000  
 ALBUQUERQUE, NM 87110  
 (505) 830-5400

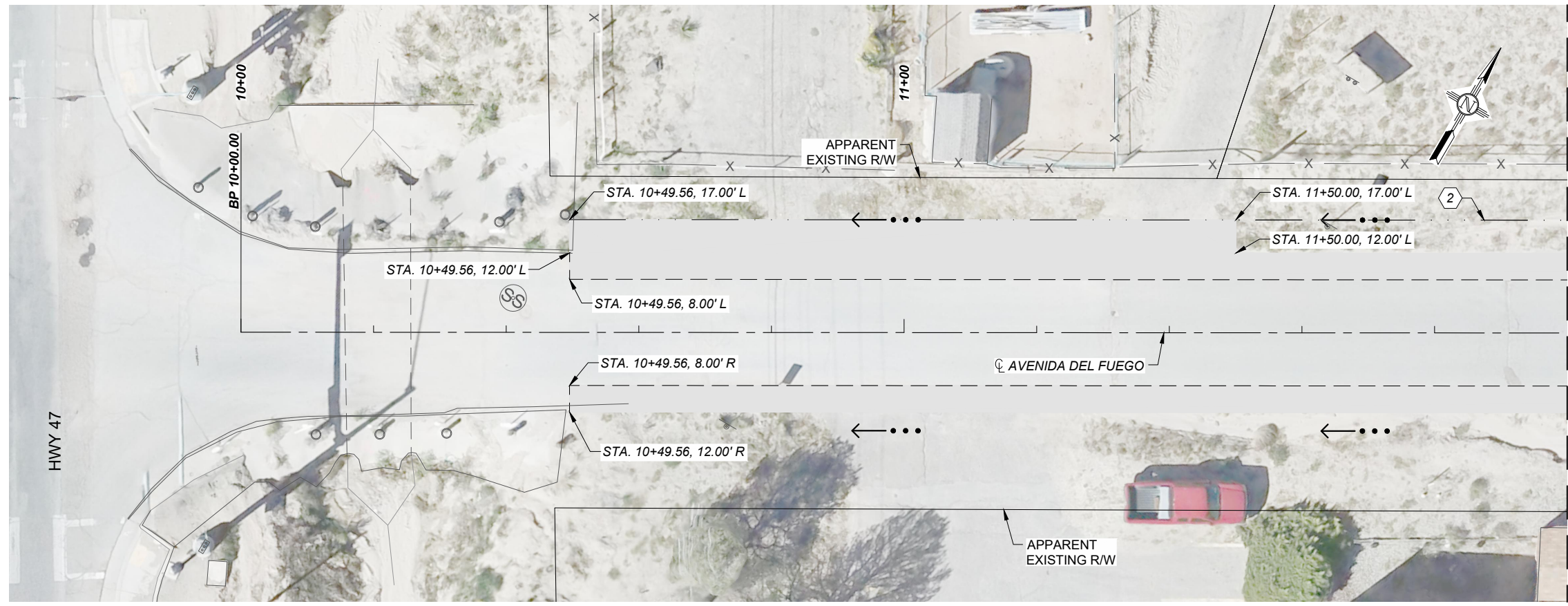


DATE: 9 Dec 2022 - 2:27pm USER: ZSHARP





CITY OF RIO COMMUNITIES



MATCHLINE STA 12+00  
SEE BELOW

AVENIDA DEL FUEGO

SCALE: 1"=20'

KEYED NOTES

- CLEAN EXISTING CULVERT.
- BUILD PAVEMENT SECTION 1. REFER TO PROPOSED TYPICAL SECTIONS ON SHEET 2-2.

GENERAL NOTES

- ALL NEW AND EXISTING DRAINAGE STRUCTURES/CULVERTS WITHIN THE PROJECT SHALL BE CLEANED PER SPEC. SECTION 613.
- ALL REMOVED DRAINAGE STRUCTURES SHALL BE DISPOSED OF PER SPEC. SECTION 601, REMOVAL OF STRUCTURES AND OBSTRUCTIONS.

LEGEND

- NEW ASPHALT PAVEMENT. SEE SECTION 2 PROPOSED TYPICAL SECTIONS FOR DETAIL
- NEAT VERTICAL SAWCUT
- FLOW DIRECTION
- DITCH FLOWLINE

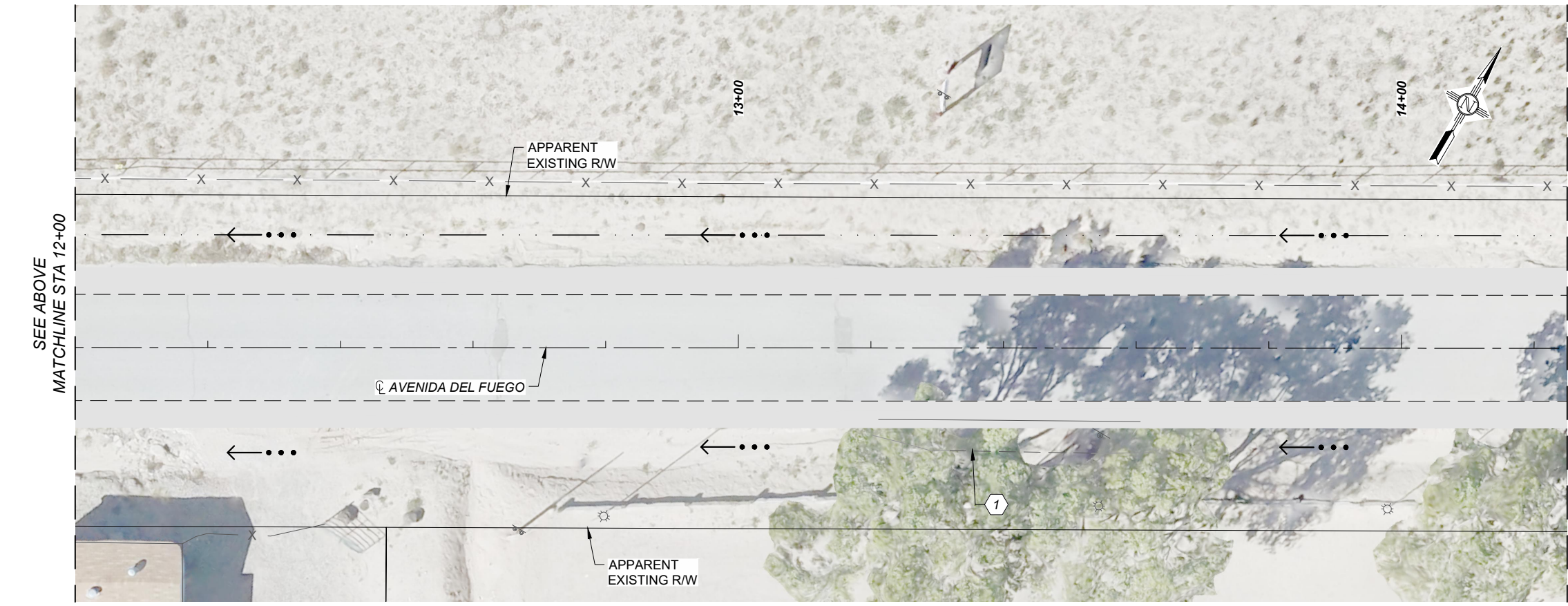
**HR** 2155 LOUISIANA BLVD NE,  
SUITE 3000  
ALBUQUERQUE, NM 87110  
(505) 830-5400

60% REVIEW

PRELIMINARY  
NOT FOR CONSTRUCTION  
12/2022

NO.	DESCRIPTION	DATE	BY
4			
3			
2			
1			

RIO COMMUNITIES  
DHSEM PROJECTS  
PERMANENT DRAINAGE PLAN



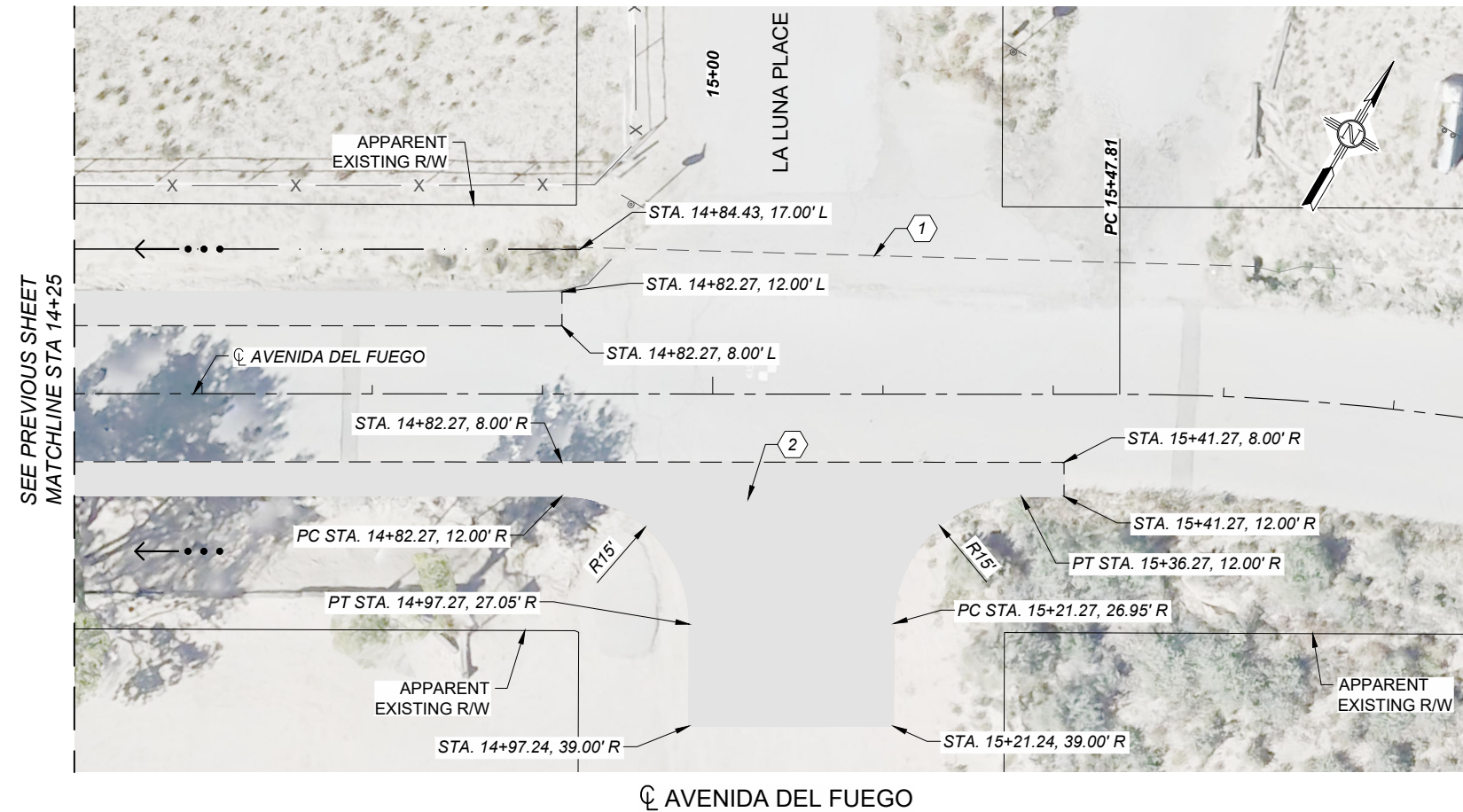
MATCHLINE STA 14+25  
SEE NEXT SHEET

AVENIDA DEL FUEGO

SEE ABOVE  
MATCHLINE STA 12+00

DATE: 9 Dec 2022 - 2:27pm USER: ZSHARP





SCALE: 1"=20'

KEYED NOTES

- CLEAN EXISTING CULVERT.
- BUILD PAVEMENT SECTION 1. REFER TO PROPOSED TYPICAL SECTIONS ON SHEET 2-2.



CITY OF RIO COMMUNITIES

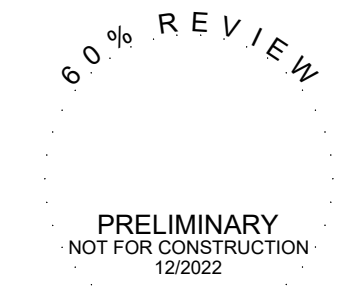
GENERAL NOTES

- ALL NEW AND EXISTING DRAINAGE STRUCTURES/CULVERTS WITHIN THE PROJECT SHALL BE CLEANED PER SPEC. SECTION 613.
- ALL REMOVED DRAINAGE STRUCTURES SHALL BE DISPOSED OF PER SPEC. SECTION 601, REMOVAL OF STRUCTURES AND OBSTRUCTIONS.

LEGEND

- NEW ASPHALT PAVEMENT. SEE SECTION 2 PROPOSED TYPICAL SECTIONS FOR DETAIL
- NEAT VERTICAL SAWCUT
- ←••• FLOW DIRECTION
- DITCH FLOWLINE

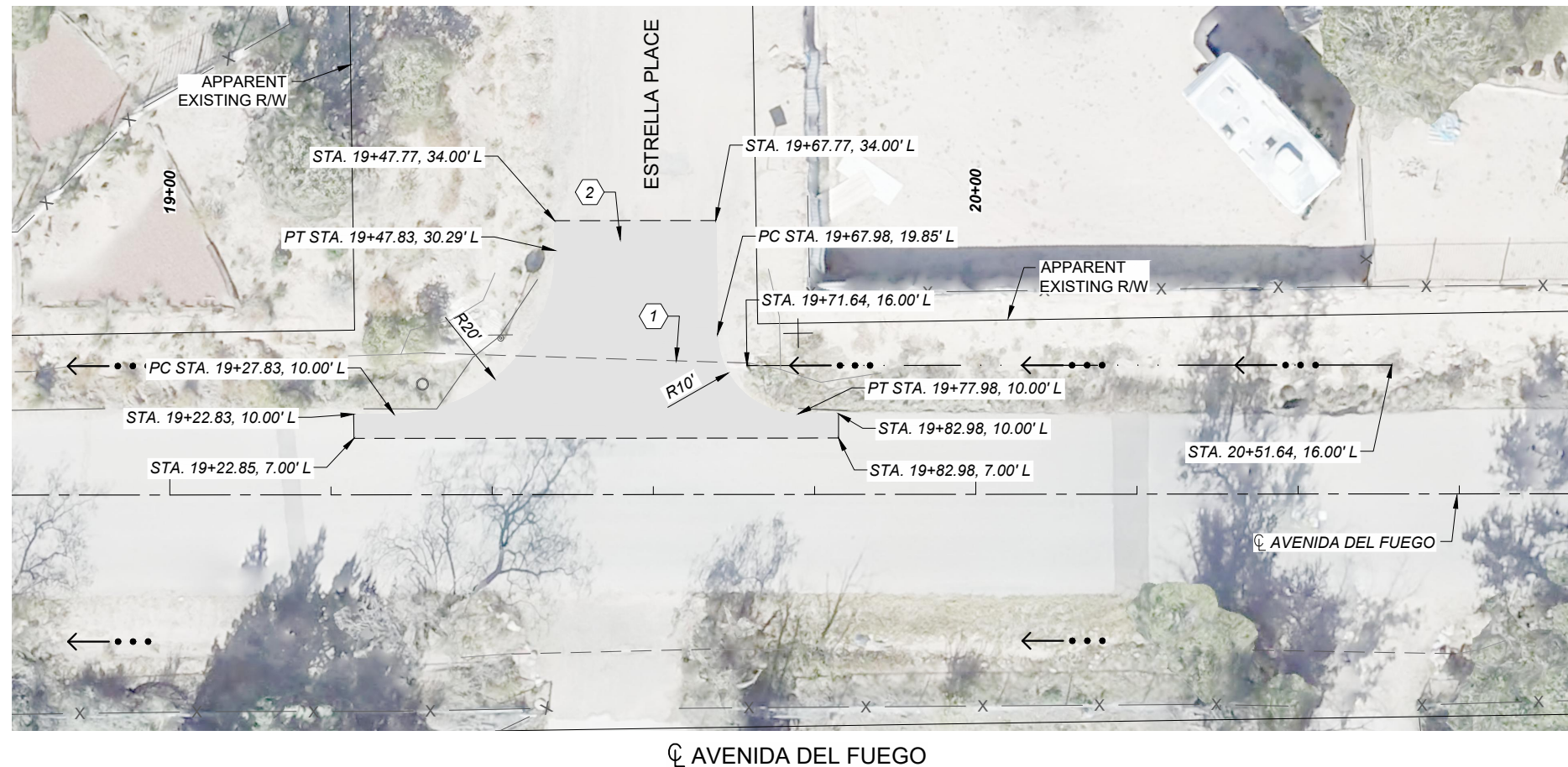
**HR** 2155 LOUISIANA BLVD NE,  
SUITE 3000  
ALBUQUERQUE, NM 87110  
(505) 830-5400



NO.	DESCRIPTION	DATE	BY
4			
3			
2			
1			

RIO COMMUNITIES  
DHSEM PROJECTS  
PERMANENT DRAINAGE PLAN





SCALE: 1"=20'

**KEYED NOTES**

- CLEAN EXISTING CULVERT.
- BUILD PAVEMENT SECTION 1. REFER TO PROPOSED TYPICAL SECTIONS ON SHEET 2-2.

**GENERAL NOTES**

- ALL NEW AND EXISTING DRAINAGE STRUCTURES/CULVERTS WITHIN THE PROJECT SHALL BE CLEANED PER SPEC. SECTION 613.
- ALL REMOVED DRAINAGE STRUCTURES SHALL BE DISPOSED OF PER SPEC. SECTION 601, REMOVAL OF STRUCTURES AND OBSTRUCTIONS.

**LEGEND**

- NEW ASPHALT PAVEMENT. SEE SECTION 2 PROPOSED TYPICAL SECTIONS FOR DETAIL
- NEAT VERTICAL SAWCUT
- ←••• FLOW DIRECTION
- ..... DITCH FLOWLINE

**HR** 2155 LOUISIANA BLVD NE,  
SUITE 3000  
ALBUQUERQUE, NM 87110  
(505) 830-5400

60% REVIEW

PRELIMINARY  
NOT FOR CONSTRUCTION  
12/2022

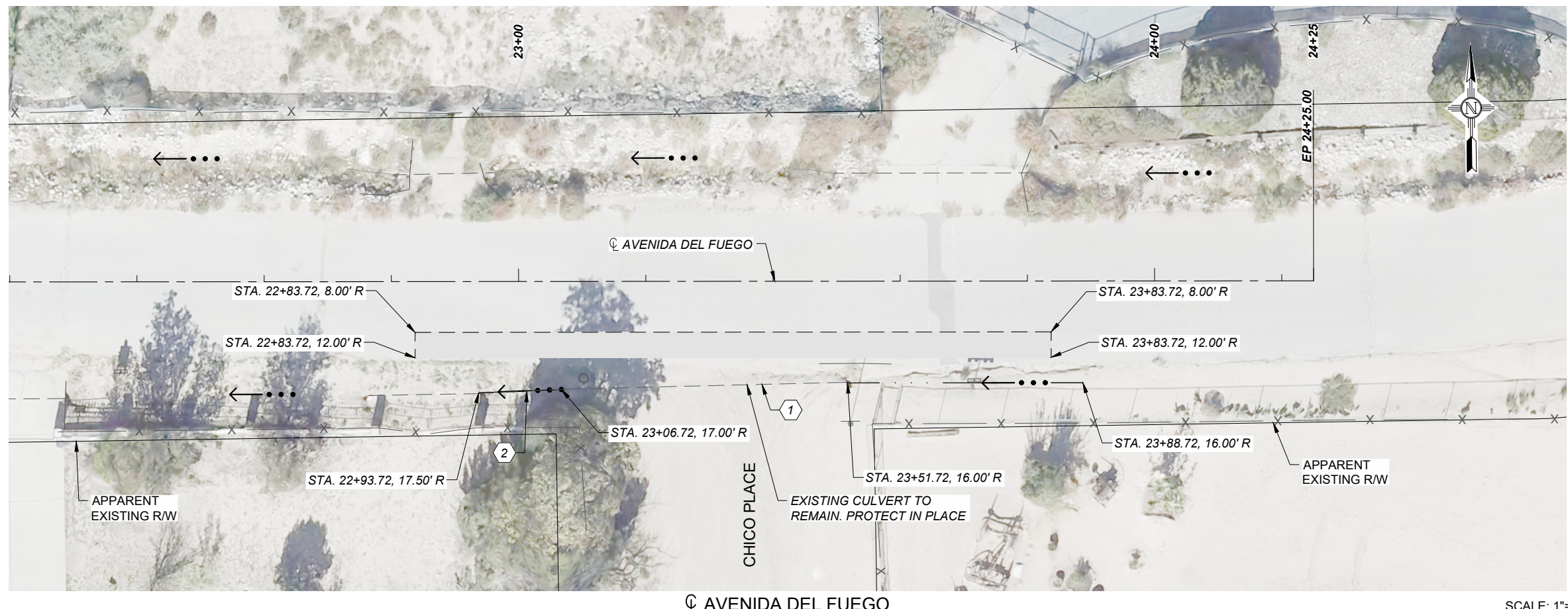


CITY OF RIO COMMUNITIES

NO.	DESCRIPTION	DATE	BY
4			
3			
2			
1			

RIO COMMUNITIES  
DHSEM PROJECTS  
PERMANENT DRAINAGE PLAN





SCALE: 1"=20'

**KEYED NOTES**

1. CLEAN EXISTING CULVERT.
2. BUILD PAVEMENT SECTION 1. REFER TO PROPOSED TYPICAL SECTIONS ON SHEET 2-2.

**GENERAL NOTES**

1. ALL NEW AND EXISTING DRAINAGE STRUCTURES/CULVERTS WITHIN THE PROJECT SHALL BE CLEANED PER SPEC. SECTION 613.
2. ALL REMOVED DRAINAGE STRUCTURES SHALL BE DISPOSED OF PER SPEC. SECTION 601, REMOVAL OF STRUCTURES AND OBSTRUCTIONS.

**LEGEND**

- NEW ASPHALT PAVEMENT. SEE SECTION 2 PROPOSED TYPICAL SECTIONS FOR DETAIL
- NEAT VERTICAL SAWCUT
- FLOW DIRECTION
- DITCH FLOWLINE

**HR** 2155 LOUISIANA BLVD NE,  
SUITE 3000  
ALBUQUERQUE, NM 87110  
(505) 830-5400

60% REVIEW

PRELIMINARY  
NOT FOR CONSTRUCTION  
12/2022



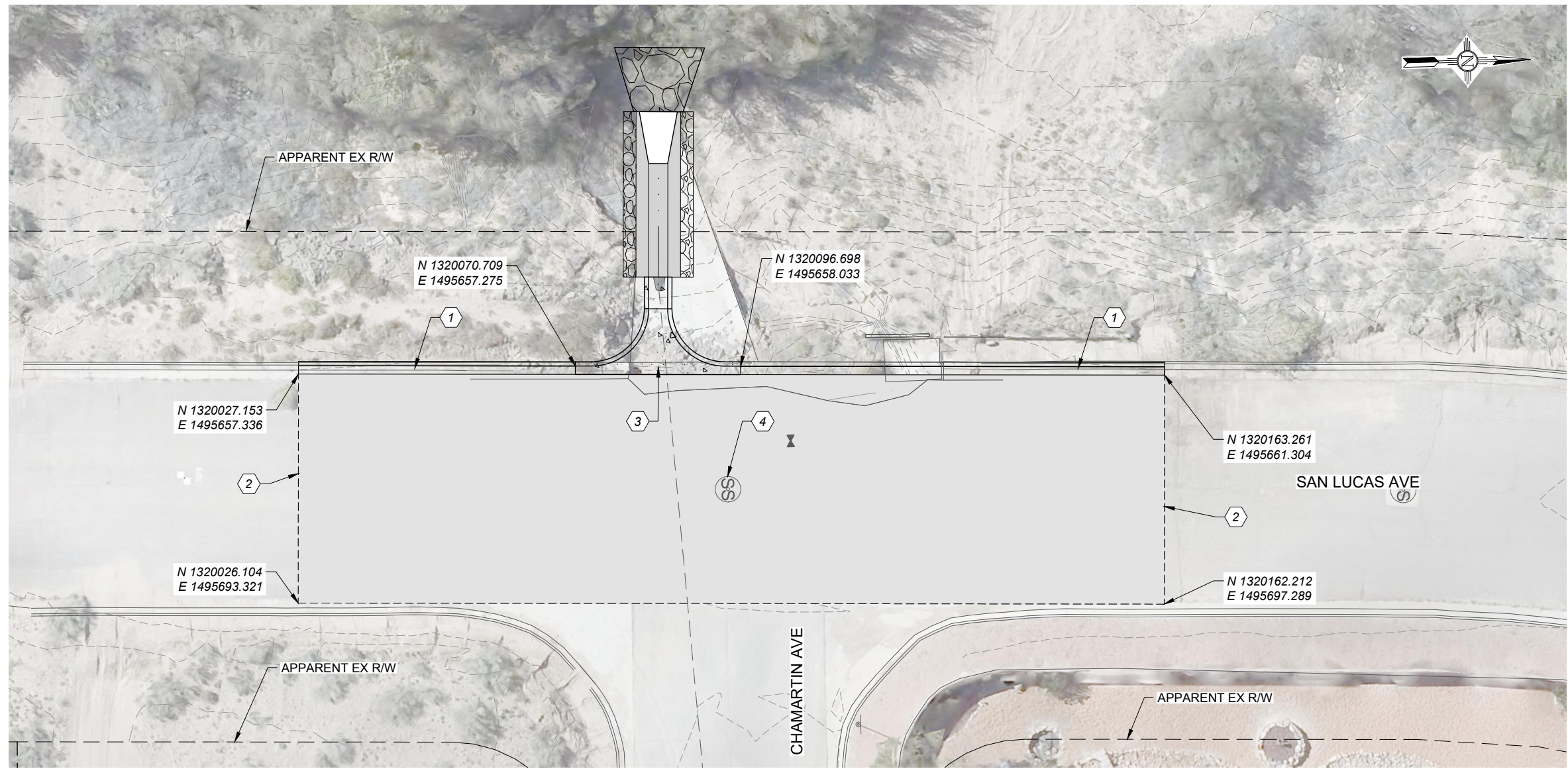
CITY OF RIO COMMUNITIES

NO.	DESCRIPTION	DATE	BY
4			
3			
2			
1			

RIO COMMUNITIES  
DHSEM PROJECTS  
PERMANENT DRAINAGE PLAN

DATE: 9 Dec 2022 - 2:27pm USER: ZSHARP





**GENERAL NOTES**

- 1.

**KEYED NOTES**

1. BUILD CONCRETE VERTICAL CURB & GUTTER TYPE B 6"X24" PER NMDOT STD. DWG 609-01-1/1.
2. NEAT VERTICAL SAWCUT EXISTING PAVEMENT. MATCH NEW SURFACE TO EXISTING.
3. RUNDOWN FLUME SEE SHEET 10-8.
4. PROTECT EX MH IN PLACE.

**LEGEND**

- ASPHALT PAVEMENT SECTION
- 1. SEE TYPICAL SECTIONS.

**HR** 2155 LOUISIANA BLVD NE,  
SUITE 3000  
ALBUQUERQUE, NM 87110  
(505) 830-5400

60% REVIEW

PRELIMINARY  
NOT FOR CONSTRUCTION  
12/2022



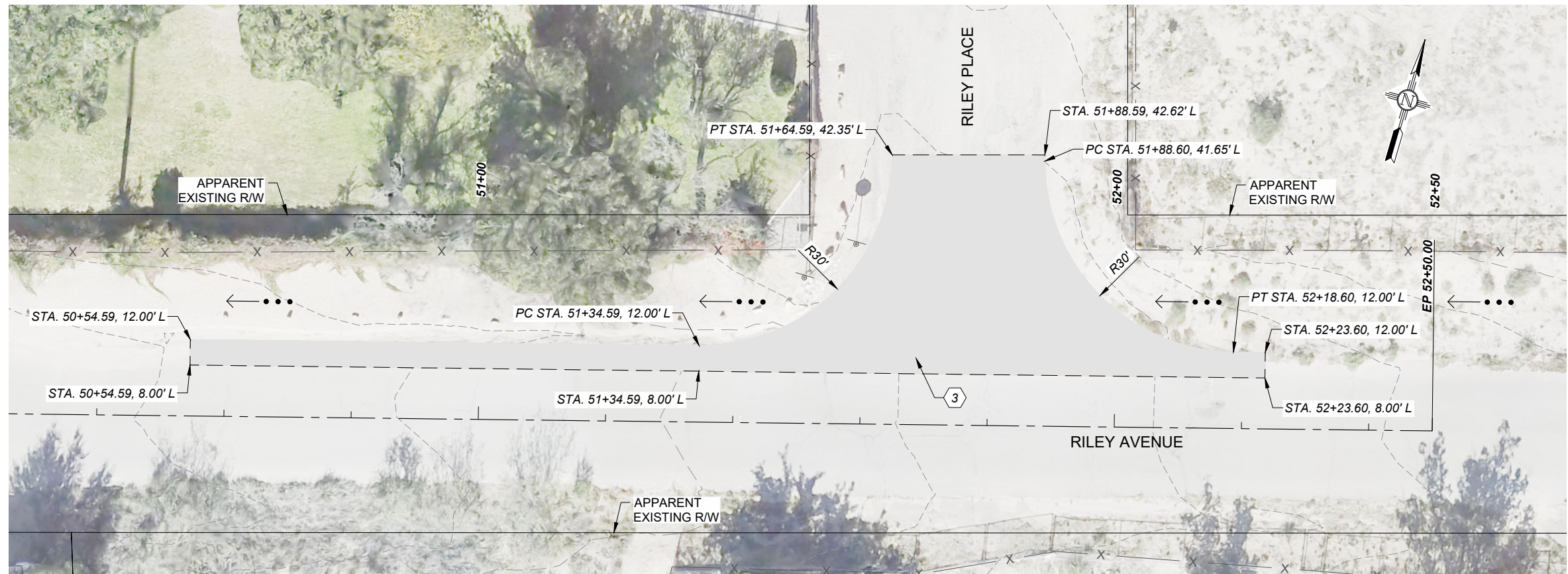
CITY OF RIO COMMUNITIES

NO.	DESCRIPTION	DATE	BY
4			
3			
2			
1			

RIO COMMUNITIES  
DHSEM PROJECTS  
PERMANENT DRAINAGE PLAN

DATE: 9 Dec 2022 - 2:27pm USER: ZSHARP





SCALE: 1"=20'

**KEYED NOTES**

1. RESTORE EXISTING ROADSIDE DITCH PER TYPICAL SECTIONS ON SHEET 2-2.
2. CLEAN EXISTING CULVERT.
3. BUILD PAVEMENT SECTION 1. REFER TO PROPOSED TYPICAL SECTIONS ON SHEET 2-2.

**GENERAL NOTES**

1. ALL NEW AND EXISTING DRAINAGE STRUCTURES/CULVERTS WITHIN THE PROJECT SHALL BE CLEANED PER SPEC. SECTION 613.
2. ALL REMOVED DRAINAGE STRUCTURES SHALL BE DISPOSED OF PER SPEC. SECTION 601, REMOVAL OF STRUCTURES AND OBSTRUCTIONS.

**LEGEND**

- NEW ASPHALT PAVEMENT. SEE SECTION 2 PROPOSED TYPICAL SECTIONS FOR DETAIL
- NEAT VERTICAL SAWCUT
- FLOW DIRECTION
- DITCH FLOWLINE

**HR** 2155 LOUISIANA BLVD NE,  
SUITE 3000  
ALBUQUERQUE, NM 87110  
(505) 830-5400

60% REVIEW

PRELIMINARY  
NOT FOR CONSTRUCTION  
12/2022



CITY OF RIO COMMUNITIES

NO.	DESCRIPTION	DATE	BY
4			
3			
2			
1			

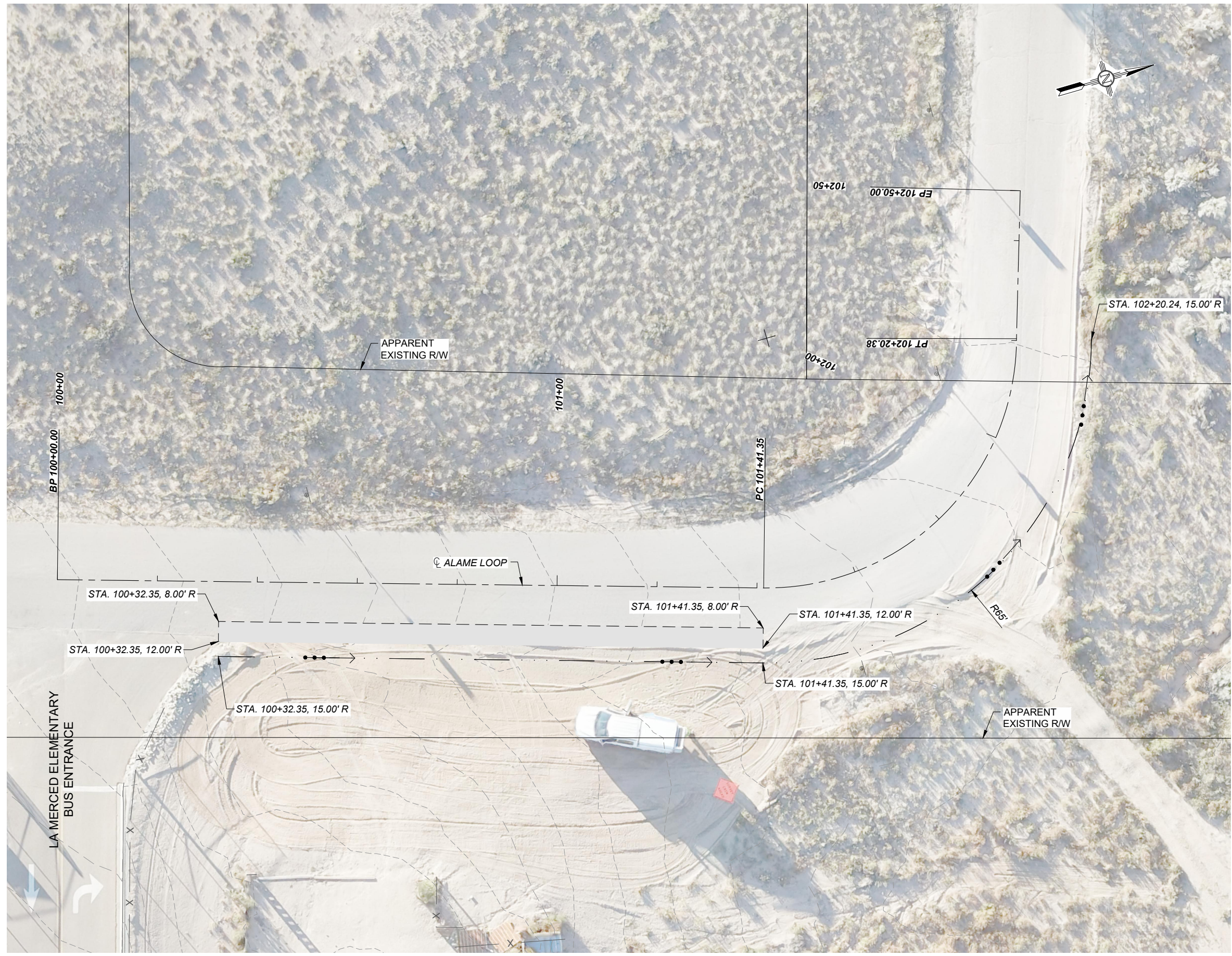
RIO COMMUNITIES  
DHSEM PROJECTS  
PERMANENT DRAINAGE PLAN

DATE: 9 Dec 2022 - 2:27pm USER: ZSHARP





CITY OF RIO COMMUNITIES



**KEYED NOTES**

- CLEAN EXISTING CULVERT.
- BUILD PAVEMENT SECTION 1. REFER TO PROPOSED TYPICAL SECTIONS ON SHEET 2-2.

**GENERAL NOTES**

- ALL NEW AND EXISTING DRAINAGE STRUCTURES/CULVERTS WITHIN THE PROJECT SHALL BE CLEANED PER SPEC. SECTION 613.
- ALL REMOVED DRAINAGE STRUCTURES SHALL BE DISPOSED OF PER SPEC. SECTION 601, REMOVAL OF STRUCTURES AND OBSTRUCTIONS.

**LEGEND**

- NEW ASPHALT PAVEMENT. SEE SECTION 2 PROPOSED TYPICAL SECTIONS FOR DETAIL
- - - - - NEAT VERTICAL SAWCUT
- ←••• FLOW DIRECTION
- - - - - DITCH FLOWLINE



2155 LOUISIANA BLVD NE,  
SUITE 3000  
ALBUQUERQUE, NM 87110  
(505) 830-5400

60% REVIEW

PRELIMINARY  
NOT FOR CONSTRUCTION  
12/2022

NO.	DESCRIPTION	DATE	BY
4			
3			
2			
1			

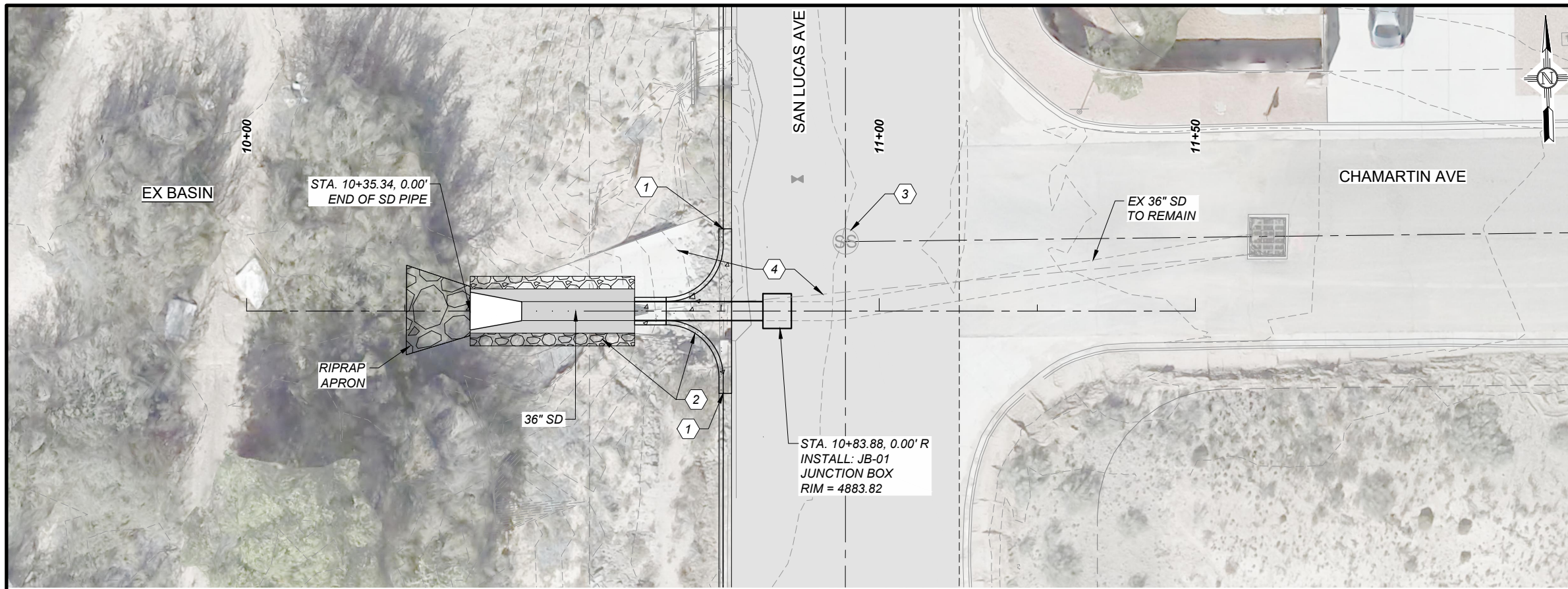
CN #####  
DHSEM PROJECTS  
PERMANENT DRAINAGE PLAN

DATE: 9 Dec 2022 - 2:27pm USER: ZSHARP

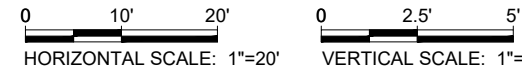
AVENIDA DEL FUEGO

SCALE: 1"=20'





BASIN SPILLWAY

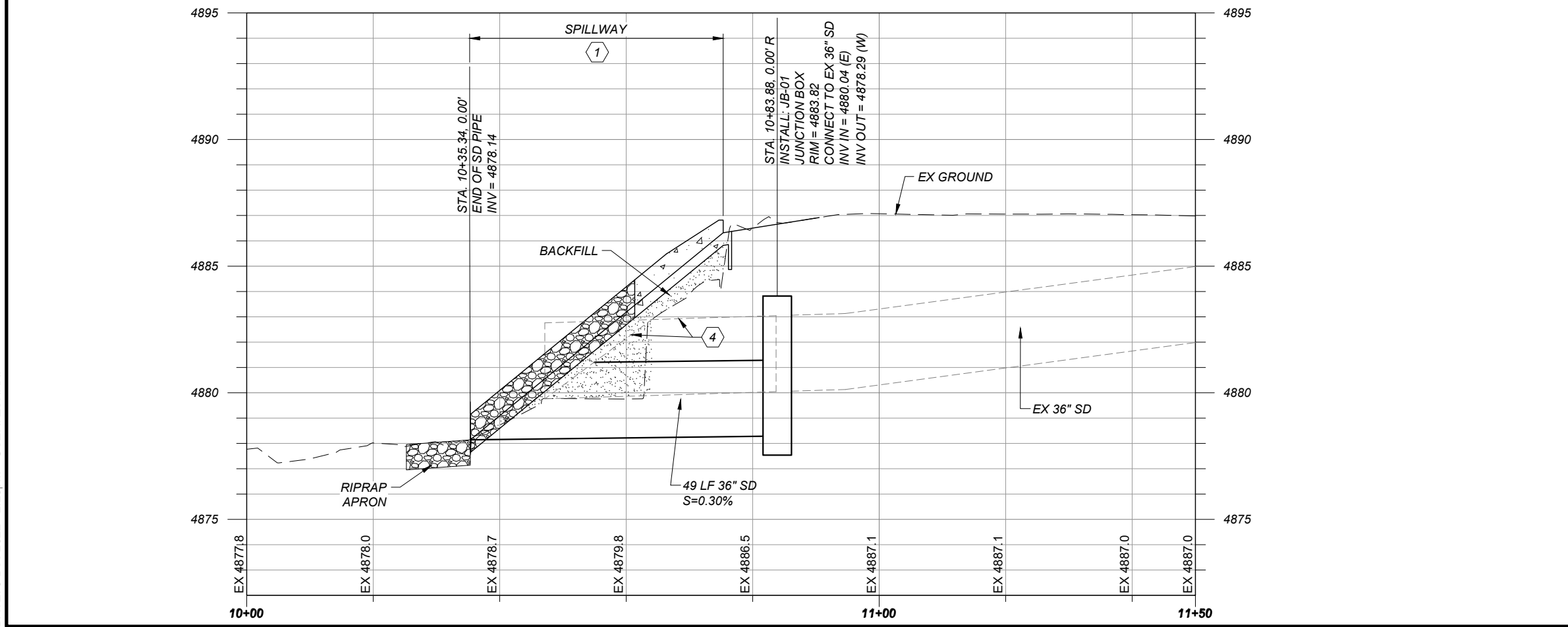


GENERAL NOTES

- 1.
- KEYED NOTES
1. CONNECT TO CONCRETE VERTICAL CURB & GUTTER TYPE B 6"X24" PER NMDOT STD. DWG 609-01-1/1.
  2. RUNDOWN FLUME TYPE II PER NMDOT ST DWG 515-03, WITH RIPRAP OPTION SECTION A-A AND TRANSITION TO RIPRAP OPTION SECTION E-E PER DWG 515-02-2/2.
  3. PROTECT EX MH IN PLACE.
  4. REMOVE EX 36" SD AND CONC RUNDOWN STRUCTURE.

LEGEND

- RIPRAP SECTION PER NMDOT DWG 515-02-2/2.



**HR** 2155 LOUISIANA BLVD NE,  
SUITE 3000  
ALBUQUERQUE, NM 87110  
(505) 830-5400

60% REVIEW

PRELIMINARY  
NOT FOR CONSTRUCTION  
12/2022



CITY OF RIO COMMUNITIES

NO.	DESCRIPTION	DATE	BY
4			
3			
2			
1			

CN #####  
DHSEM PROJECTS  
STORM DRAIN SPILLWAY PLAN AND PROFILE

DATE: 9 Dec 2022 - 2:28pm USER: ZSHARP