



GENERAL NOTES

1. NEAT VERTICAL SAWCUT EXISTING PAVEMENT FOR AS REQUIRED FOR NEW CURB & GUTTER. MATCH EXISTING GRADE AT LIP OF NEW CURB.

KEYED NOTES

1. BUILD CONCRETE VERTICAL CURB & GUTTER TYPE B 6"X24" PER NMDOT STD. DWG 609-01-1/1.
2. BUILD CONCRETE VALLEY GUTTER 6"X36" PER NMDOT STD. DWG 609-01-1/1.
3. EX RUNDOWN FLUME.

LEGEND

- RIPRAP SECTION PER NMDOT DWG 515-02-2/2.



2155 LOUISIANA BLVD NE,
SUITE 3000
ALBUQUERQUE, NM 87110
(505) 830-5400

60% REVIEW

PRELIMINARY
NOT FOR CONSTRUCTION
12/2022

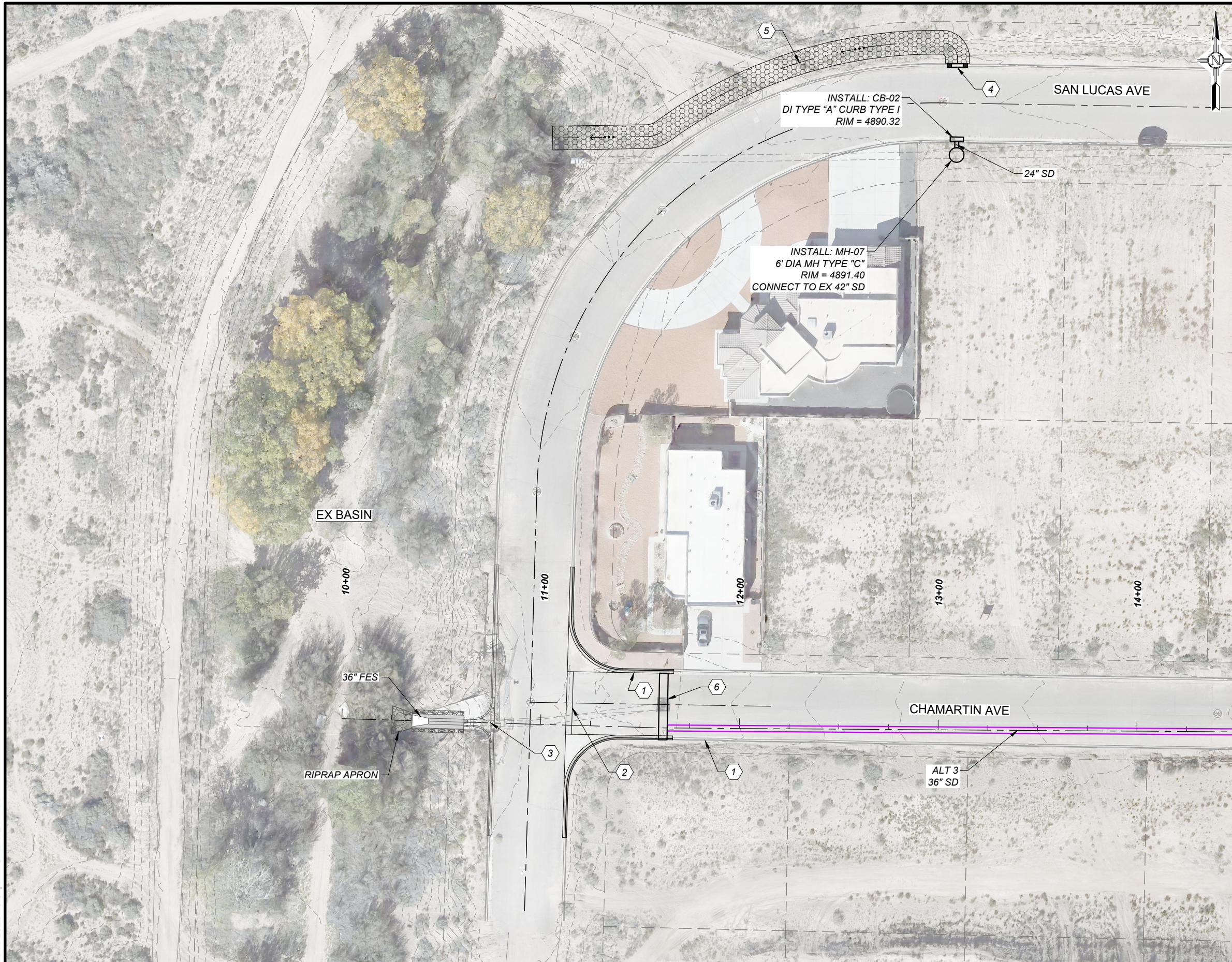


CITY OF RIO COMMUNITIES

NO.	DESCRIPTION	DATE	BY
4			
3			
2			
1			

DRAINAGE IMPROVEMENTS
ALTERNATIVE 1

DATE: 9 Dec 2022 - 3:00pm USER: ZSHARP



MATCHLINE STA 14+50
SEE NEXT SHEET

GENERAL NOTES

- NEAT VERTICAL SAWCUT EXISTING PAVEMENT FOR AS REQUIRED FOR NEW CURB & GUTTER. MATCH EXISTING GRADE AT LIP OF NEW CURB.

KEYED NOTES

- BUILD CONCRETE VERTICAL CURB & GUTTER TYPE B 6"X24" PER NMDOT STD. DWG 609-01-1/1.
- BUILD CONCRETE VALLEY GUTTER 6"X36" PER NMDOT STD. DWG 609-01-1/1.
- EX RUNDOWN FLUME.
- CURB OPENING.
- 6:1 DITCH GRADING.
- REMOVE EX SD STRUCTURE AND REPLACE WITH TRANSVERSE STRUCTURE.

LEGEND

- RIPRAP SECTION PER NMDOT DWG 515-02-2/2.

HR 2155 LOUISIANA BLVD NE,
SUITE 3000
ALBUQUERQUE, NM 87110
(505) 830-5400

60% REVIEW

PRELIMINARY
NOT FOR CONSTRUCTION
12/2022



CITY OF RIO COMMUNITIES

NO.	DESCRIPTION	DATE	BY
4			
3			
2			
1			

DRAINAGE IMPROVEMENTS
ALTERNATIVE 2 & 3

DATE: 9 Dec 2022 - 3:01pm USER: ZSHARP



CITY OF RIO COMMUNITIES

NO.	DESCRIPTION	DATE	BY
4			
3			
2			
1			

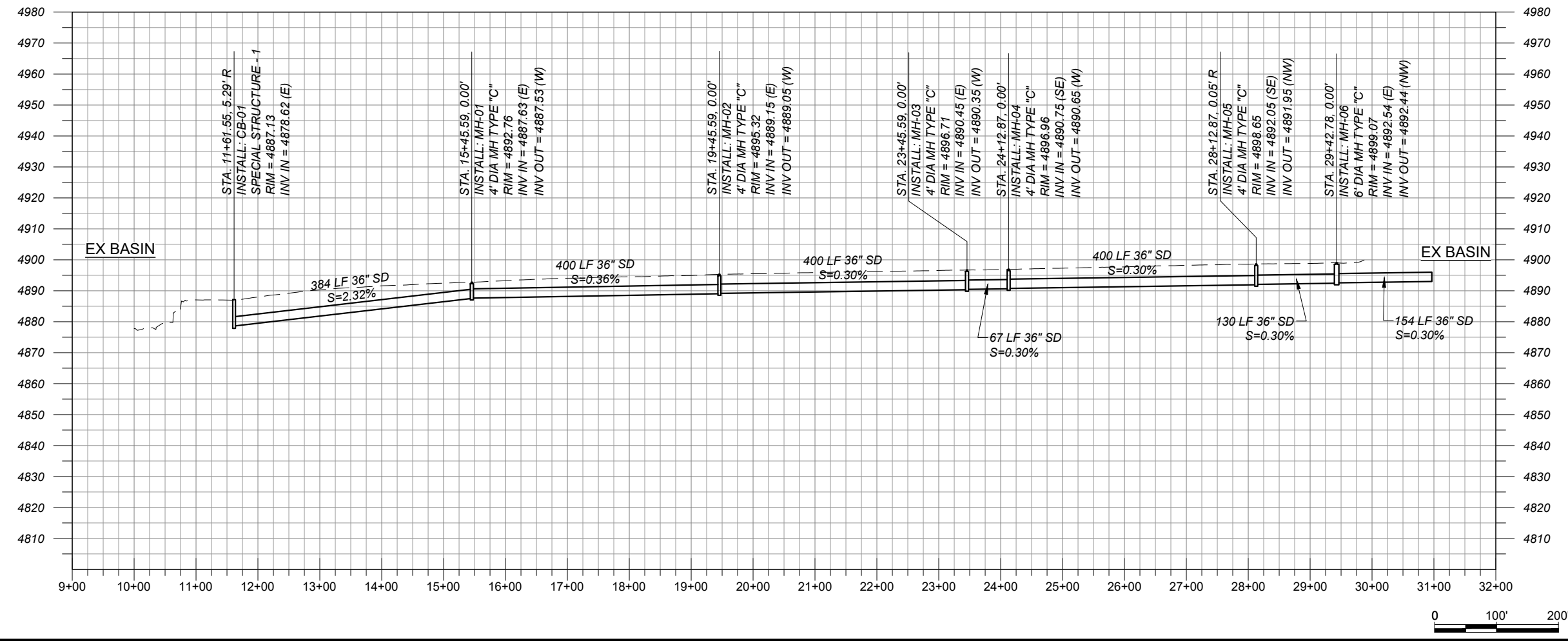
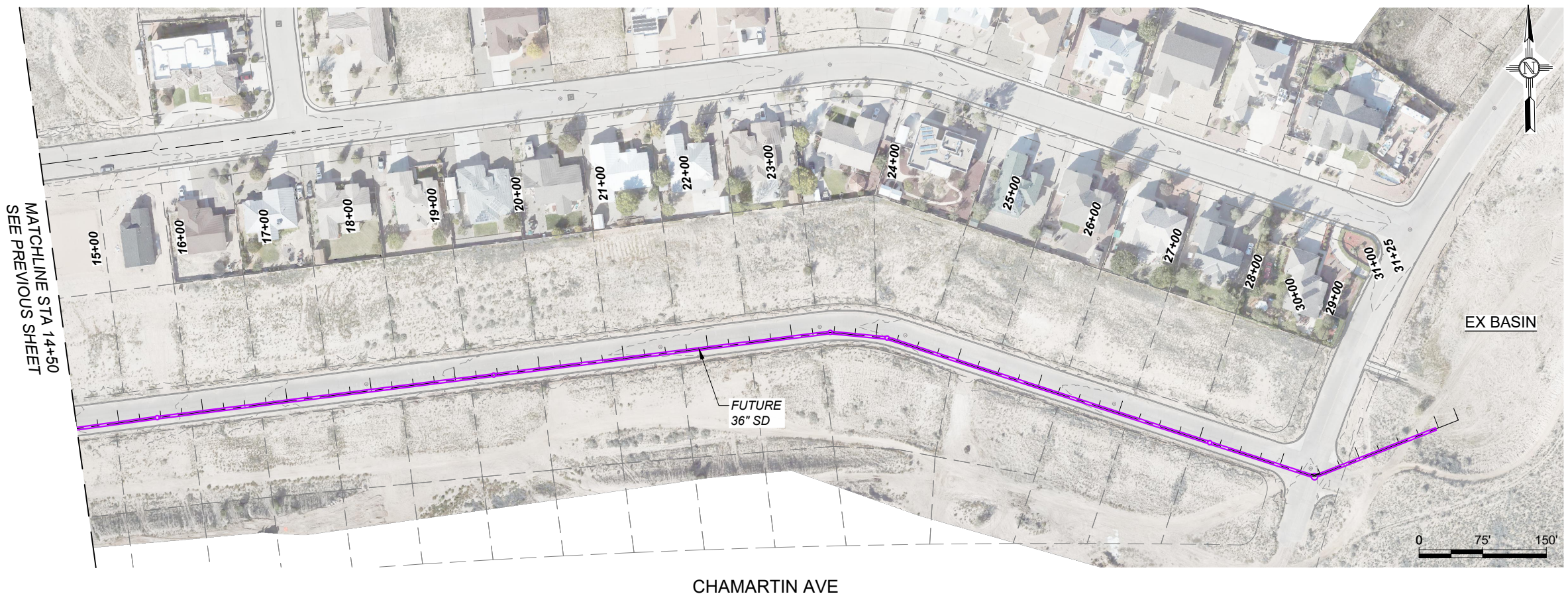
DRAINAGE IMPROVEMENTS
ALTERNATIVE 3 CONTINUED



2155 LOUISIANA BLVD NE,
SUITE 3000
ALBUQUERQUE, NM 87110
(505) 830-5400

60% REVIEW

PRELIMINARY
NOT FOR CONSTRUCTION
12/2022



DATE: 9 Dec 2022 - 3:01pm USER: ZSHARP