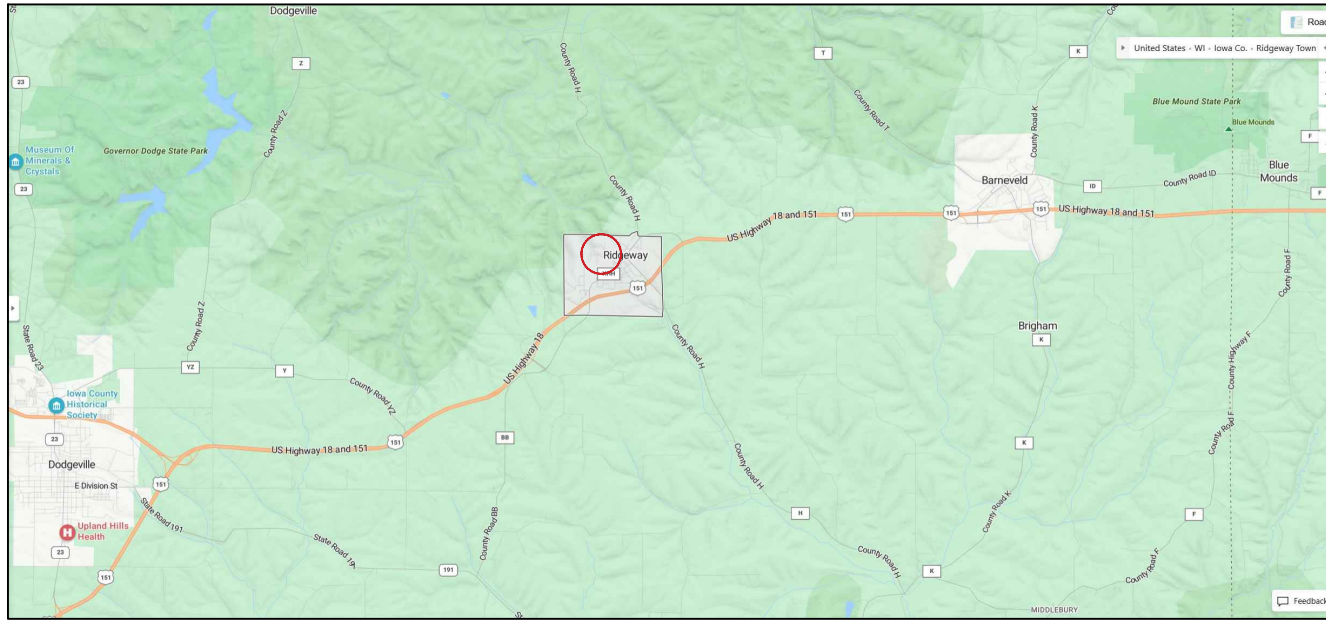


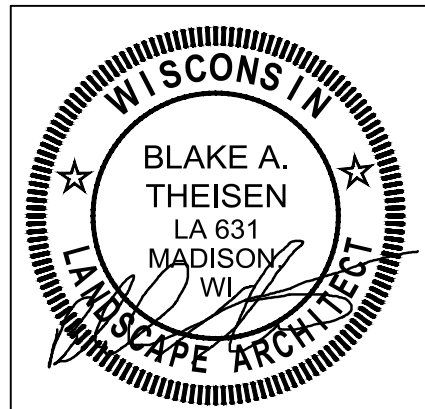
PROJECT LOCATION MAP



PROJECT ADDRESS:
A. HUGHETTE ROAD

NTS

INDEX TO DRAWINGS	
T100	TITLE SHEET
C001	EXISTING CONDITIONS
C002	EXISTING CONDITIONS PHOTOS
C100	SITE LAYOUT PLAN - OVERVIEW
C101	SITE LAYOUT PLAN - DEPOT AREA
C102	SITE LAYOUT PLAN - DIAMOND DRAINAGE AREA
C103	SITE LAYOUT PLAN - NORTH PARKING AREA
C104	SITE GRADING PLAN - DEPOT AREA
C900	CONSTRUCTION DETAILS
C901	CONSTRUCTION DETAILS
C902	CONSTRUCTION DETAILS
E001	ABBREVIATIONS, SYMBOLS, AND NOTES
E100	ELECTRICAL SITE
E100A	ELECTRICAL SITE BID ALTERNATE
E100D	ELECTRICAL SITE DEMO
C701	ELECTRICAL SCHEDULES AND DIAGRAMS



DATE SIGNED: 11/3/2023

LANDSCAPE ARCHITECT:
PARKITECTURE + PLANNING
901 DEMING WAY, SUITE 201
MADISON, WI 53717
608.203.8203

RIDGEWAY COMMUNITY PARK
VILLAGE OF RIDGEWAY
RIDGEWAY, WISCONSIN
PROJECT NUMBER 22.055



Project Name:
COMMUNITY PARK IMPROVEMENTS
HUGHETTE ROAD
RIDGEWAY, WI 53582

Sheet Title:
TITLE SHEET

Revisions:

Project #: 22.055
Issued For: BID
Date: 11/3/2023

Sheet Number

T100

SITE DEMOLITION NOTES

1. CONTACT DIGGER'S HOTLINE 5 WORKING DAYS PRIOR TO THE START OF CONSTRUCTION.
2. WORKING HOURS TO BE APPROVED BY VILLAGE.
3. CONSTRUCTION TRAFFIC SHALL BE MINIMIZED TO AVOID CONFLICTS WITH PARK USERS.
4. COORDINATE SITE ACCESS, STAGING AND SECURITY WITH VILLAGE STAFF.
5. CONSTRUCTION STAFF MUST PARK ON THE STREET OR IN PARKING LOTS - NO PERSONAL VEHICLES ON THE CONSTRUCTION SITE.
6. DAMAGE TO EXISTING HARDSCAPE, TREES, OR LAWN AT SITE ACCESS MUST BE REPLACED IN KIND.

EXISTING CONDITIONS NOTES

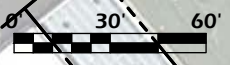
1. SITE SURVEY PROVIDED BY VILLAGE OF RIDGEWAY.
2. ACTUAL FIELD CONDITIONS MAY VARY SLIGHTLY. CONTRACTOR TO VERIFY DIMENSIONS AND ELEVATIONS PRIOR TO CONSTRUCTION.

INACTIVE CAPPED LANDFILL LIMITS FROM WDNR OPEN DATA PORTAL

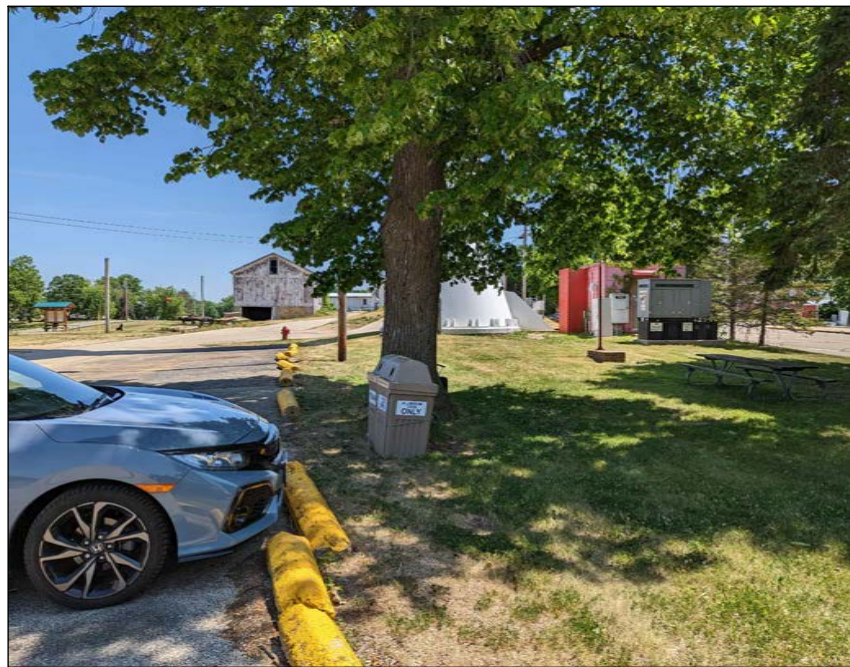
HUGHETTE ROAD

Military Ridge State Trail

MAIN STREET

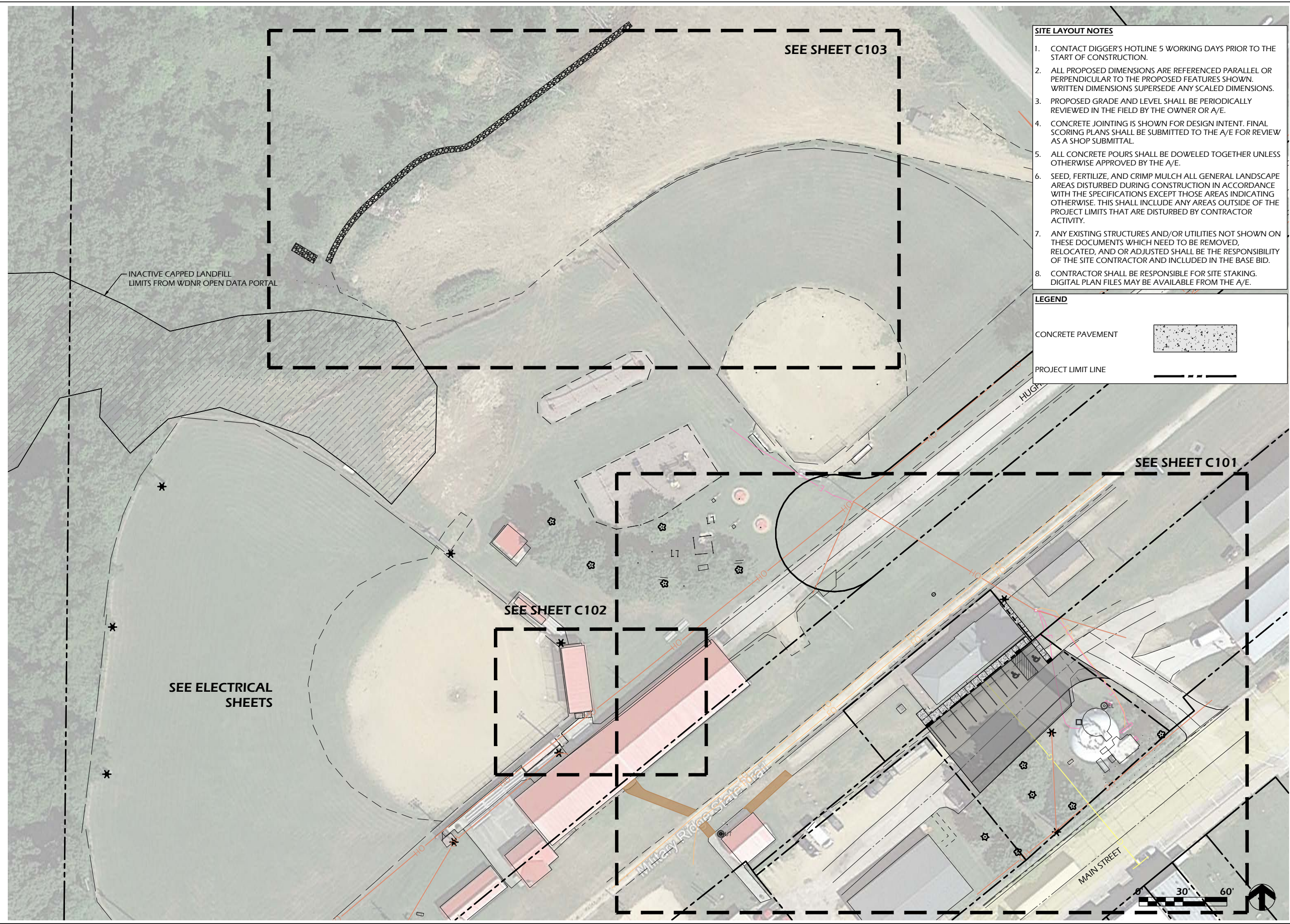


File: V:\22.055 Ridgeway Park\CAD\P-SP.dwg Layout: C001 User: bluern Plotted: Nov 03, 2023 12:20pm



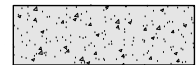
File: V:\22.055 Ridgeway Park\CAD\P-SP.dwg Layout: C002 User: bluern Plotted: Nov 03, 2023 12:21pm


File: V:\22.055 Ridgeway Park\CAD\P-SP.dwg Layout: C100 User: blueem Plotted: Nov 03, 2023 - 12:38pm



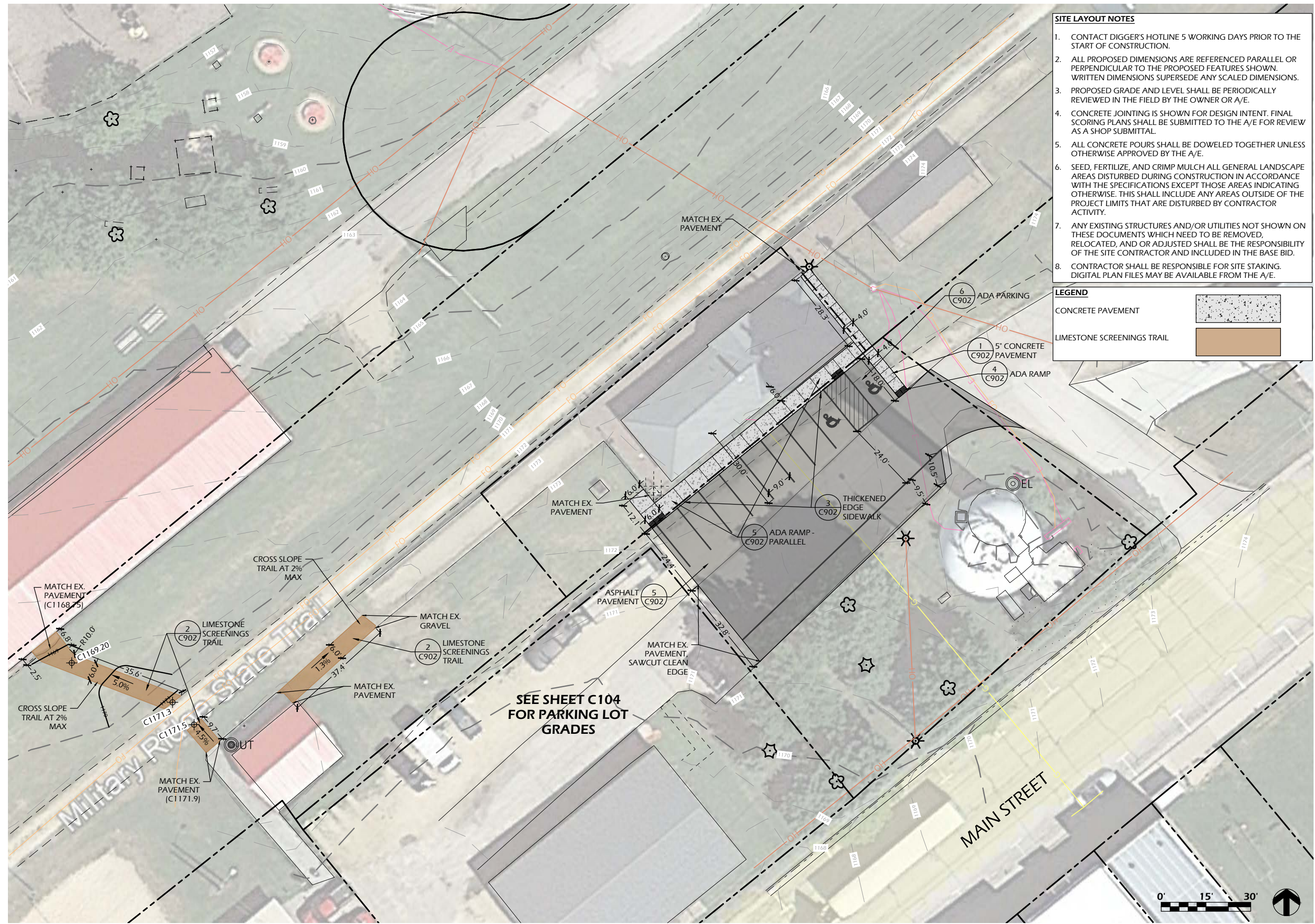
- SITE LAYOUT NOTES**
1. CONTACT DIGGER'S HOTLINE 5 WORKING DAYS PRIOR TO THE START OF CONSTRUCTION.
 2. ALL PROPOSED DIMENSIONS ARE REFERENCED PARALLEL OR PERPENDICULAR TO THE PROPOSED FEATURES SHOWN. WRITTEN DIMENSIONS SUPERSEDE ANY SCALED DIMENSIONS.
 3. PROPOSED GRADE AND LEVEL SHALL BE PERIODICALLY REVIEWED IN THE FIELD BY THE OWNER OR A/E.
 4. CONCRETE JOINTING IS SHOWN FOR DESIGN INTENT. FINAL SCORING PLANS SHALL BE SUBMITTED TO THE A/E FOR REVIEW AS A SHOP SUBMITTAL.
 5. ALL CONCRETE POURS SHALL BE DOWELED TOGETHER UNLESS OTHERWISE APPROVED BY THE A/E.
 6. SEED, FERTILIZE, AND CRIMP MULCH ALL GENERAL LANDSCAPE AREAS DISTURBED DURING CONSTRUCTION IN ACCORDANCE WITH THE SPECIFICATIONS EXCEPT THOSE AREAS INDICATING OTHERWISE. THIS SHALL INCLUDE ANY AREAS OUTSIDE OF THE PROJECT LIMITS THAT ARE DISTURBED BY CONTRACTOR ACTIVITY.
 7. ANY EXISTING STRUCTURES AND/OR UTILITIES NOT SHOWN ON THESE DOCUMENTS WHICH NEED TO BE REMOVED, RELOCATED, AND OR ADJUSTED SHALL BE THE RESPONSIBILITY OF THE SITE CONTRACTOR AND INCLUDED IN THE BASE BID.
 8. CONTRACTOR SHALL BE RESPONSIBLE FOR SITE STAKING. DIGITAL PLAN FILES MAY BE AVAILABLE FROM THE A/E.

LEGEND

CONCRETE PAVEMENT 

PROJECT LIMIT LINE 

File: V:\22.055 Ridgeway Park\CAD\P-SP.dwg Layout: C101 User: bluem Plotted: Nov 03, 2023 1:06pm



- SITE LAYOUT NOTES**
- CONTACT DIGGER'S HOTLINE 5 WORKING DAYS PRIOR TO THE START OF CONSTRUCTION.
 - ALL PROPOSED DIMENSIONS ARE REFERENCED PARALLEL OR PERPENDICULAR TO THE PROPOSED FEATURES SHOWN. WRITTEN DIMENSIONS SUPERSEDE ANY SCALED DIMENSIONS.
 - PROPOSED GRADE AND LEVEL SHALL BE PERIODICALLY REVIEWED IN THE FIELD BY THE OWNER OR A/E.
 - CONCRETE JOINTING IS SHOWN FOR DESIGN INTENT. FINAL SCORING PLANS SHALL BE SUBMITTED TO THE A/E FOR REVIEW AS A SHOP SUBMITTAL.
 - ALL CONCRETE POURS SHALL BE DOWELED TOGETHER UNLESS OTHERWISE APPROVED BY THE A/E.
 - SEED, FERTILIZE, AND CRIMP MULCH ALL GENERAL LANDSCAPE AREAS DISTURBED DURING CONSTRUCTION IN ACCORDANCE WITH THE SPECIFICATIONS EXCEPT THOSE AREAS INDICATING OTHERWISE. THIS SHALL INCLUDE ANY AREAS OUTSIDE OF THE PROJECT LIMITS THAT ARE DISTURBED BY CONTRACTOR ACTIVITY.
 - ANY EXISTING STRUCTURES AND/OR UTILITIES NOT SHOWN ON THESE DOCUMENTS WHICH NEED TO BE REMOVED, RELOCATED, AND OR ADJUSTED SHALL BE THE RESPONSIBILITY OF THE SITE CONTRACTOR AND INCLUDED IN THE BASE BID.
 - CONTRACTOR SHALL BE RESPONSIBLE FOR SITE STAKING. DIGITAL PLAN FILES MAY BE AVAILABLE FROM THE A/E.

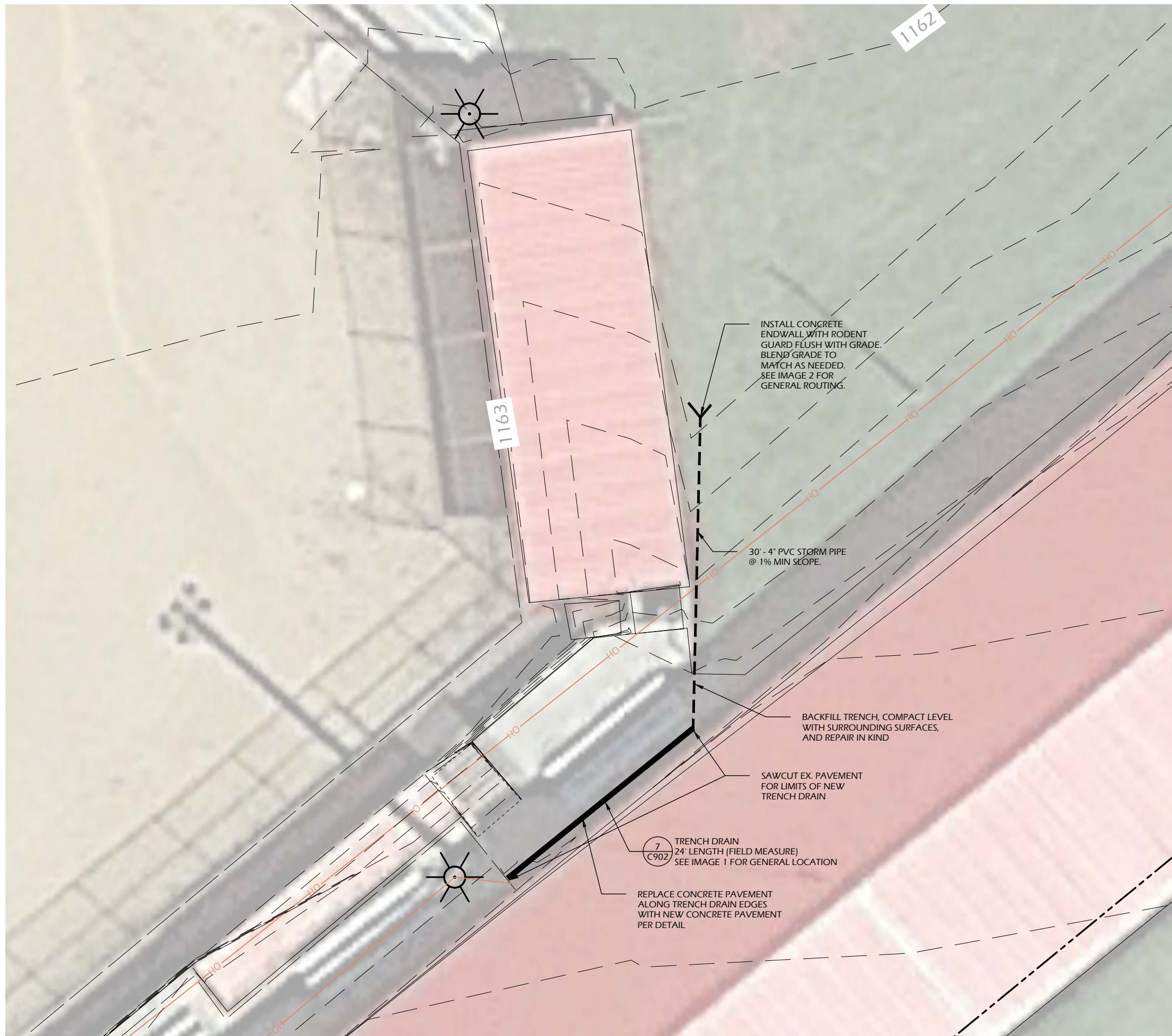
LEGEND

CONCRETE PAVEMENT	
LIMESTONE SCREENINGS TRAIL	

Project Name: COMMUNITY PARK IMPROVEMENTS
 Project #: 22.055
 Issued For: BID
 Date: 11/3/2023
 Sheet Number: C101

SEE SHEET C104
 FOR PARKING LOT
 GRADES

File: V:\22.055 Ridgeway_Park\CAD\P-SP.dwg Layout: C102 User: blueem Plotted: Nov 03, 2023 1:14pm



SITE LAYOUT NOTES

1. CONTACT DIGGER'S HOTLINE 5 WORKING DAYS PRIOR TO THE START OF CONSTRUCTION.
2. ALL PROPOSED DIMENSIONS ARE REFERENCED PARALLEL OR PERPENDICULAR TO THE PROPOSED FEATURES SHOWN. WRITTEN DIMENSIONS SUPERSEDE ANY SCALED DIMENSIONS.
3. PROPOSED GRADE AND LEVEL SHALL BE PERIODICALLY REVIEWED IN THE FIELD BY THE OWNER OR A/E.
4. CONCRETE JOINTING IS SHOWN FOR DESIGN INTENT. FINAL SCORING PLANS SHALL BE SUBMITTED TO THE A/E FOR REVIEW AS A SHOP SUBMITTAL.
5. ALL CONCRETE POURS SHALL BE DOWELED TOGETHER UNLESS OTHERWISE APPROVED BY THE A/E.
6. SEED, FERTILIZE, AND CRIMP MULCH ALL GENERAL LANDSCAPE AREAS DISTURBED DURING CONSTRUCTION IN ACCORDANCE WITH THE SPECIFICATIONS EXCEPT THOSE AREAS INDICATING OTHERWISE. THIS SHALL INCLUDE ANY AREAS OUTSIDE OF THE PROJECT LIMITS THAT ARE DISTURBED BY CONTRACTOR ACTIVITY.
7. ANY EXISTING STRUCTURES AND/OR UTILITIES NOT SHOWN ON THESE DOCUMENTS WHICH NEED TO BE REMOVED, RELOCATED, AND OR ADJUSTED SHALL BE THE RESPONSIBILITY OF THE SITE CONTRACTOR AND INCLUDED IN THE BASE BID.
8. CONTRACTOR SHALL BE RESPONSIBLE FOR SITE STAKING. DIGITAL PLAN FILES MAY BE AVAILABLE FROM THE A/E.



IMAGE 1

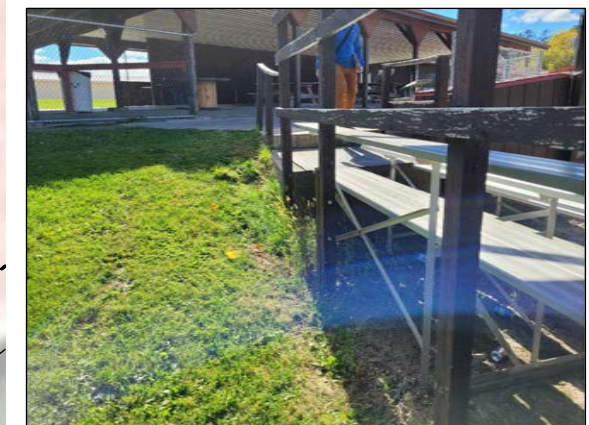


IMAGE 2



Revisions:

Project #: 22.055
 Issued For: BID
 Date: 11/3/2023

Sheet Number
C102



IMAGE 3



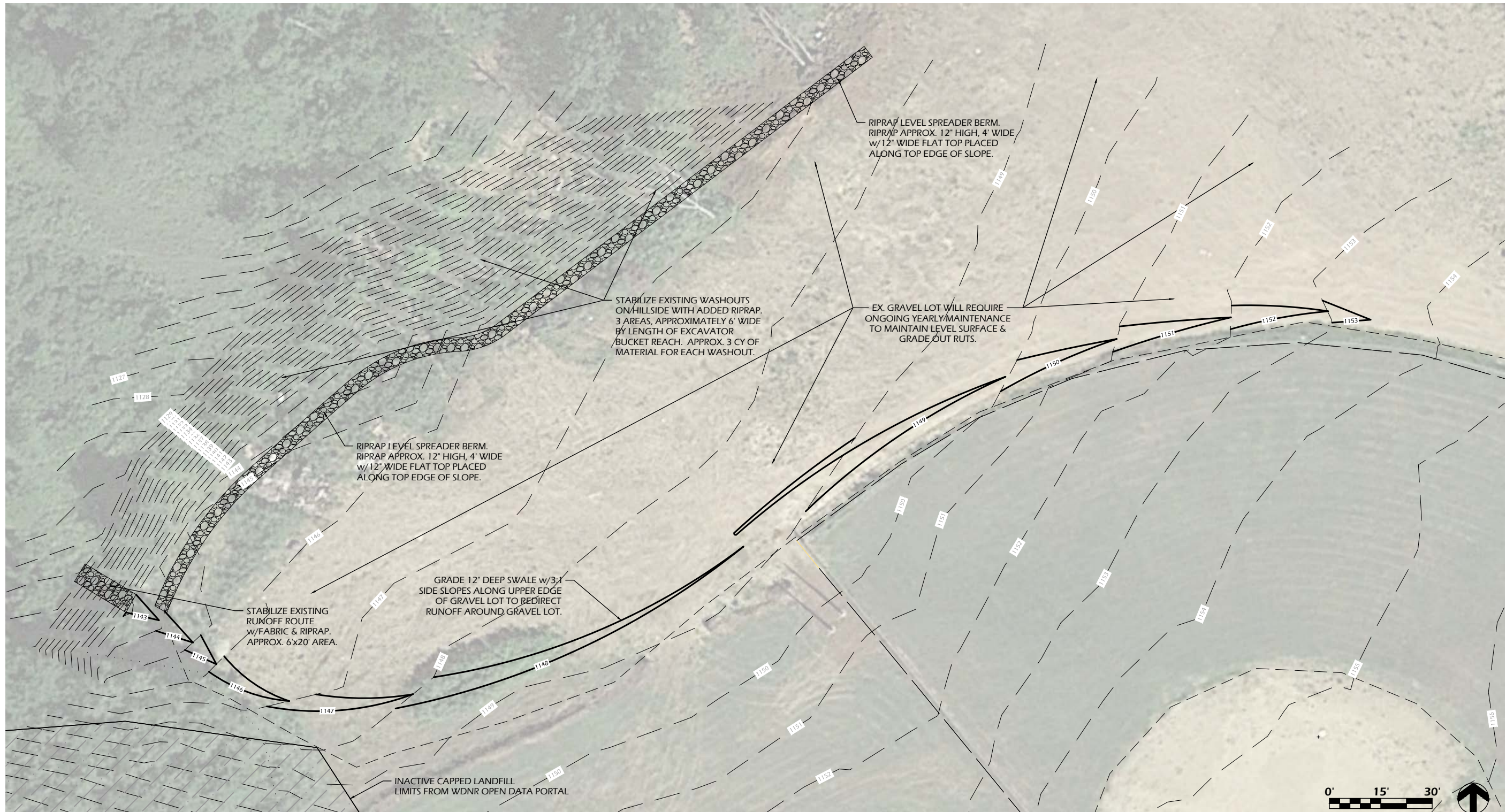
IMAGE 4



IMAGE 5: EXAMPLE WASHOUT



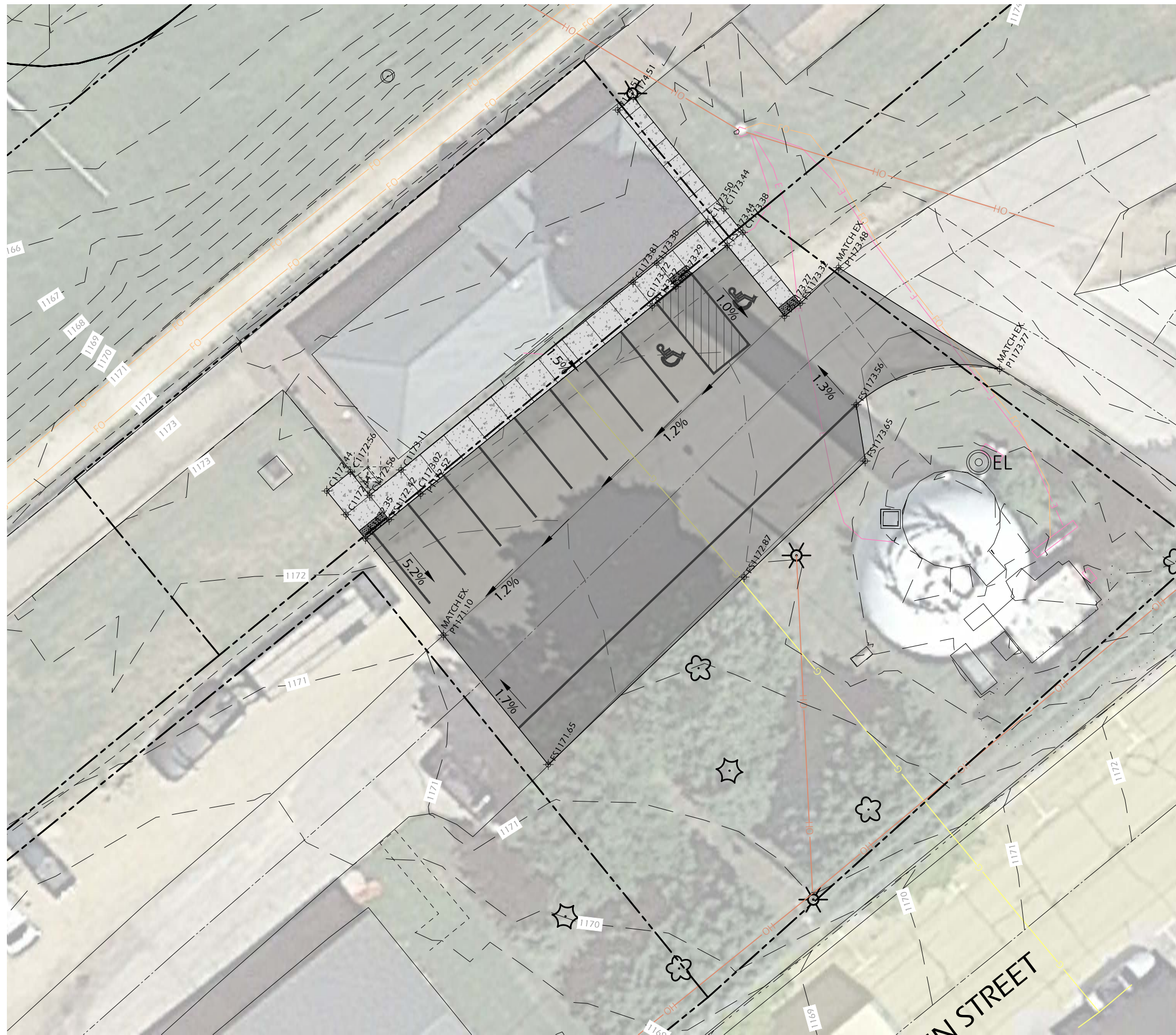
IMAGE 6



File: V:\22.055 Ridgeway Park\CAD\P-SP.dwg Layout: C103 User: blueem Plotted: Nov 03, 2023 1:14pm

Project Name:	COMMUNITY PARK IMPROVEMENTS
Project #:	22.055
Issued For:	BID
Date:	11/3/2023
Sheet Title:	SITE LAYOUT PLAN - NORTH PARKING LOT
Sheet Number:	C103


File: V:\22.055 Ridgeway Park\CAD\P-SP.dwg Layout: C104 User: blueem Plotted: Nov 03, 2023 1:15pm



1. CONTACT DIGGER'S HOTLINE 5 WORKING DAYS PRIOR TO THE START OF CONSTRUCTION.
2. ALL PROPOSED DIMENSIONS ARE REFERENCED PARALLEL OR PERPENDICULAR TO THE PROPOSED FEATURES SHOWN. WRITTEN DIMENSIONS SUPERSEDE ANY SCALED DIMENSIONS.
3. PROPOSED GRADE AND LEVEL SHALL BE PERIODICALLY REVIEWED IN THE FIELD BY THE OWNER OR A/E.
4. CONCRETE JOINTING IS SHOWN FOR DESIGN INTENT. FINAL SCORING PLANS SHALL BE SUBMITTED TO THE A/E FOR REVIEW AS A SHOP SUBMITTAL.
5. ALL CONCRETE POURS SHALL BE DOWELED TOGETHER UNLESS OTHERWISE APPROVED BY THE A/E.
6. SEED, FERTILIZE, AND CRIMP MULCH ALL GENERAL LANDSCAPE AREAS DISTURBED DURING CONSTRUCTION IN ACCORDANCE WITH THE SPECIFICATIONS EXCEPT THOSE AREAS INDICATING OTHERWISE. THIS SHALL INCLUDE ANY AREAS OUTSIDE OF THE PROJECT LIMITS THAT ARE DISTURBED BY CONTRACTOR ACTIVITY.
7. ANY EXISTING STRUCTURES AND/OR UTILITIES NOT SHOWN ON THESE DOCUMENTS WHICH NEED TO BE REMOVED, RELOCATED, AND OR ADJUSTED SHALL BE THE RESPONSIBILITY OF THE SITE CONTRACTOR AND INCLUDED IN THE BASE BID.
8. CONTRACTOR SHALL BE RESPONSIBLE FOR SITE STAKING. DIGITAL PLAN FILES MAY BE AVAILABLE FROM THE A/E.

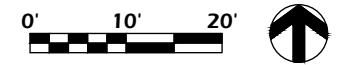
LEGEND

CONCRETE PAVEMENT 

PROJECT LIMIT LINE 

SPOT GRADE ABBREVIATIONS:

- (XXX.XX) = EXISTING GRADE
- CXXX.XX = PROPOSED CONCRETE
- PXXX.XX = PROPOSED PAVEMENT
- XXX.XX = PROPOSED FINISH SURFACE
- FSXXX.XX = PROPOSED FINISH SURFACE
- TOCXXX.XX = PROPOSED TOP OF CURB
- RIMXXX.XX = RIM
- IEXXX.XX = INVERT ELEVATION
- TWXXX.XX = TOP OF WALL ELEVATION
- BWXXX.XX = BOTTOM OF WALL ELEVATION

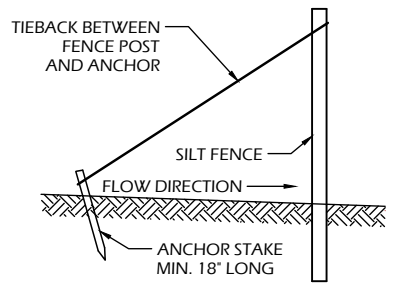


Project Name:

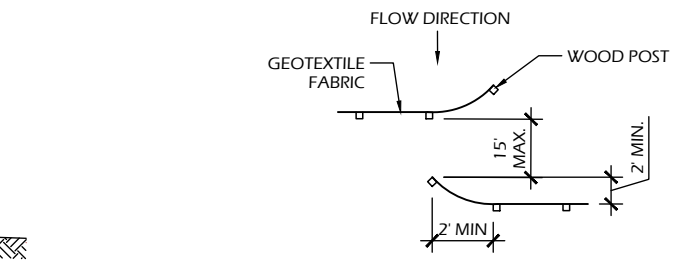
Revisions:

Project #: 22.055
 Issued For: BID
 Date: 11/3/2023

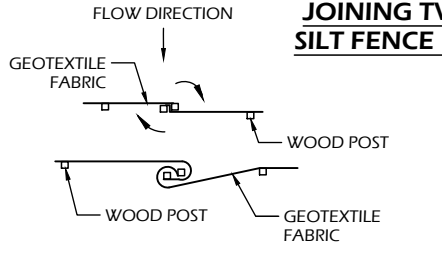
Sheet Number
C104



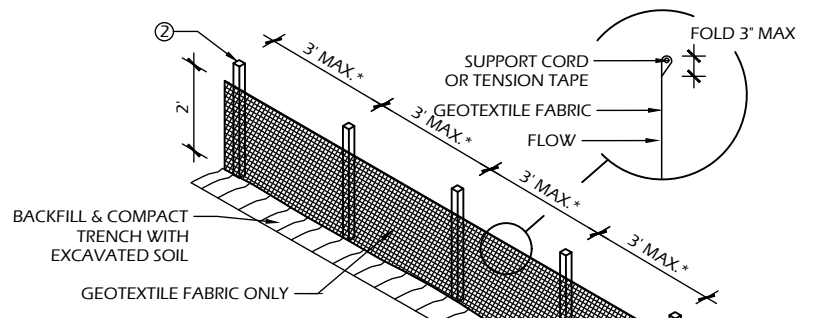
**SILT FENCE TIE BACK
(WHEN REQUIRED BY
THE ENGINEER)**



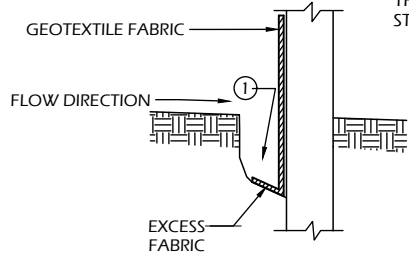
**JOINING TWO LENGTHS OF
SILT FENCE (HOOK METHOD)**



**JOINING TWO LENGTHS OF
SILT FENCE (TWIST METHOD)**



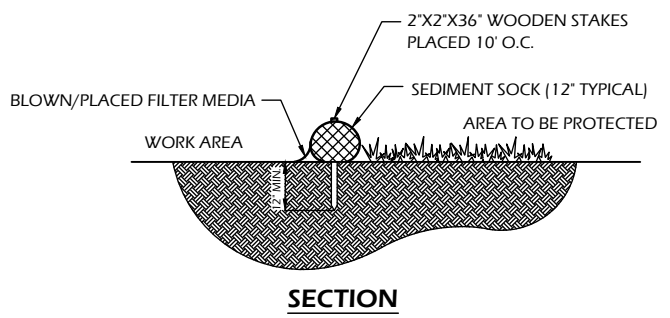
TRENCH DETAIL



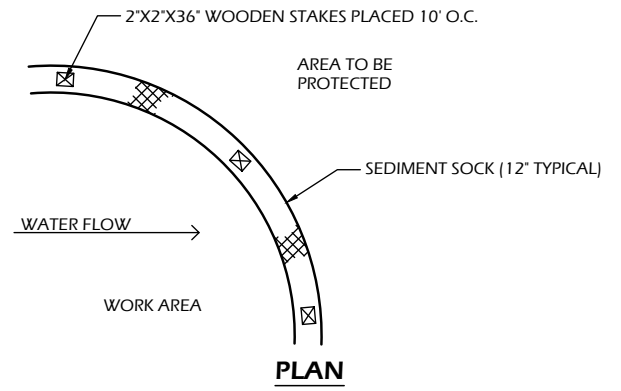
ATTACH THE FABRIC TO THE POSTS WITH WIRE STAPLES OR WOODEN LATH AND NAILS

SILT FENCE

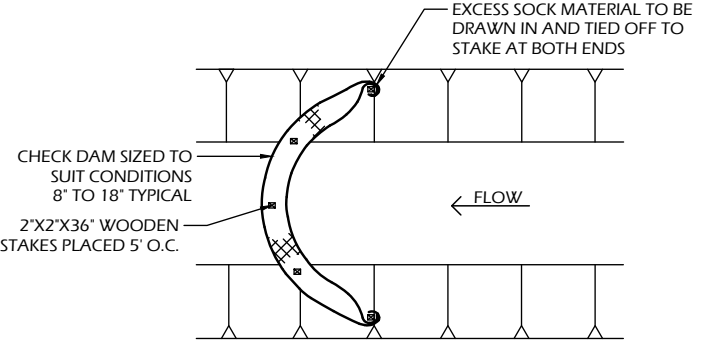
*NOTE:
8'-0" POST SPACING ALLOWED IF A WOVEN GEOTEXTILE FABRIC IS USED.



SECTION



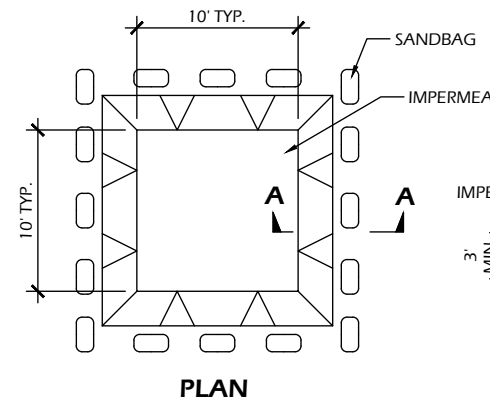
PLAN



SEDIMENT SOCK

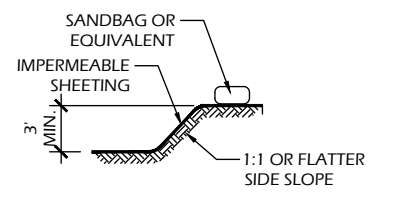
SEDIMENT SOCK NOTES:
1. ALL MATERIAL TO MEET SPECIFICATIONS.
2. SEDIMENT SHOULD BE REMOVED FROM BEHIND CHECK DAM ONCE THE ACCUMULATED HEIGHT HAS REACHED 1/2 THE HEIGHT OF THE CHECK DAM.
3. CHECK DAM CAN BE DIRECT SEEDED AT THE TIME OF INSTALLATION.
4. FILTER MEDIA FILL TO MEET APPLICATION REQUIREMENTS.
5. COMPOST MATERIAL TO BE DISPERSED ON SITE, AS DETERMINED BY ENGINEER.

9. EROSION CONTROL SHALL BE PROVIDED IN ACCORDANCE WITH WDNR TECHNICAL STANDARD AND TECHNICAL SPECIFICATIONS.
10. CROSS BRACE WITH 2' X 4' WOODEN FRAME OR EQUIVALENT AT TOP OF POSTS AS DIRECTED BY THE ENGINEER.
11. MINIMUM 14 GAUGE WIRE REQUIRED, FOLD FABRIC 3" OVER THE WIRE AND STAPLE OR PLACE WIRE RINGS ON 12" C.C.
12. WIRE SUPPORT FENCE SHALL BE 14 GAUGE MINIMUM WOVEN WIRE WITH A MAXIMUM MESH SPACING OF 6". SECURE TOP OF GEOTEXTILE FABRIC TO TOP OF FENCE WITH STAPLES OR WIRE RINGS AT 12" C.C. (TYPE B)
13. GEOTEXTILE FABRIC SHALL BE REINFORCED WITH AN INDUSTRIAL POLYPROPYLENE NETTING WITH A MAXIMUM MESH SPACING OF 3/4" OR EQUAL. A HEAVY DUTY NYLON TOP SUPPORT CORD OR EQUIVALENT IS REQUIRED. (TYPE A)
14. STEEL POSTS SHALL BE STUDDED "TEE" OR "U" TYPE WITH A MINIMUM WEIGHT OF 1.28 LBS./LIN. FT. (WITHOUT ANCHOR) FIN ANCHORS SUFFICIENT TO RESIST POST MOVEMENT ARE REQUIRED. WOOD POSTS SHALL BE A MINIMUM SIZE OF 1 1/8" X 1 1/8" OF OAK OR HICKORY.
15. CONSTRUCT SILT FENCE FROM A CONTINUOUS ROLL, IF POSSIBLE, BY CUTTING LENGTHS TO AVOID JOINTS. IF A JOINT IS NECESSARY, USE ONE OF THE FOLLOWING TWO METHODS: A.) TWIST METHOD - OVERLAP THE END POSTS AND TWIST, OR ROTATE, AT LEAST 180 DEGREES, B.) HOOK METHOD - HOOK THE END OF EACH SILT FENCE LENGTH.

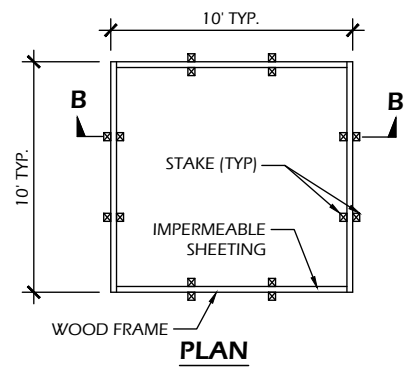


PLAN

EXCAVATED WASHOUT STRUCTURE

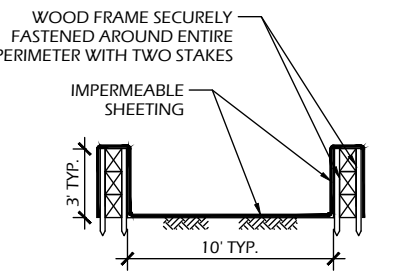


SECTION A-A

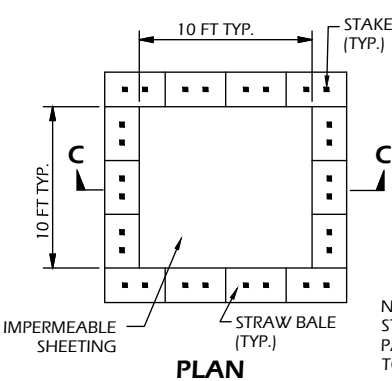


PLAN

WASHOUT STRUCTURE WITH WOOD PLANKS

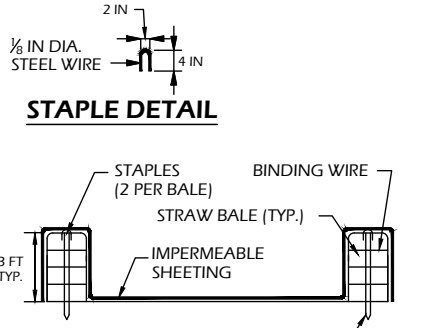


SECTION B-B



PLAN

WASHOUT STRUCTURE WITH STRAW BALES



STAPLE DETAIL

NOTE: CAN BE TWO STACKED BALES OR PARTIALLY EXCAVATED TO REACH 3 FT DEPTH

SECTION C-C

CONSTRUCTION SPECIFICATIONS

1. TEMPORARY CONCRETE WASHOUT STRUCTURE SHALL BE USED TO WASH DOWN CONCRETE TRUCK CHUTES AND OTHER EQUIPMENT AFTER USE TO PREVENT WASHDOWN WATER FROM POLLUTING THE SITE.
2. LOCATE WASHOUT STRUCTURE A MINIMUM OF 50 FEET AWAY FROM OPEN CHANNELS, STORM DRAIN INLETS, SENSITIVE AREAS, WETLANDS, BUFFERS AND WATER COURSES AND AWAY FROM CONSTRUCTION TRAFFIC.
3. SIZE WASHOUT STRUCTURE FOR VOLUME NECESSARY TO CONTAIN WASH WATER AND SOLIDS AND MAINTAIN AT LEAST 4 INCHES OF FREEBOARD. TYPICAL DIMENSIONS ARE 10 FEET X 10 FEET X 3 FEET DEEP.
4. PREPARE SOIL BASE FREE OF ROCKS OR OTHER DEBRIS THAT MAY CAUSE TEARS OR HOLES IN THE LINER. FOR LINER, USE 10 MIL OR THICKER UV RESISTANT, IMPERMEABLE SHEETING, FREE OF HOLES AND TEARS OR OTHER DEFECTS THAT COMPROMISE IMPERMEABILITY OF THE MATERIAL.
5. PROVIDE A SIGN FOR THE WASHOUT IN CLOSE PROXIMITY TO THE FACILITY.
6. KEEP CONCRETE WASHOUT STRUCTURE WATER TIGHT. REPLACE IMPERMEABLE LINER IF DAMAGED (E.G., RIPPED OR PUNCTURED). EMPTY OR REPLACE WASHOUT STRUCTURE THAT IS 75 PERCENT FULL, AND DISPOSE OF ACCUMULATED MATERIAL PROPERLY. DO NOT REUSE PLASTIC LINER. WET-VACUUM STORED LIQUIDS THAT HAVE NOT EVAPORATED AND DISPOSE OF IN AN APPROVED MANNER. PRIOR TO FORECASTED RAINSTORMS, REMOVE LIQUIDS OR COVER STRUCTURE TO PREVENT OVERFLOWS. REMOVE HARDENED SOLIDS, WHOLE OR BROKEN UP, FOR DISPOSAL OR RECYCLING. MAINTAIN RUNOFF DIVERSION AROUND EXCAVATED WASHOUT STRUCTURE UNTIL STRUCTURE IS REMOVED.

1
C900

CONCRETE WASHOUT STRUCTURE (TEMP)

SCALE: NTS

SILT FENCE GENERAL NOTES:

1. FOR MANUAL INSTALLATIONS THE TRENCH SHALL BE A MINIMUM OF 4" WIDE & 6" DEEP TO BURY AND ANCHOR THE GEOTEXTILE FABRIC. FOLD MATERIAL TO FIT TRENCH AND BACKFILL & COMPACT TRENCH WITH EXCAVATED SOIL.
2. WOOD POSTS SHALL BE A MINIMUM SIZE OF 3' LENGTH OF OAK OR HICKORY
3. ADDITIONAL POST DEPTH OR TIE BACKS MAY BE REQUIRED IN UNSTABLE SOILS
4. DETAILS OF CONSTRUCTION NOT SHOWN ON THIS DRAWING SHALL CONFORM TO THE PERTINENT REQUIREMENTS OF THE SPECIFICATIONS.
5. 8" OF FENCE FABRIC REQUIRED BELOW GRADE IN TRENCH PER DNR TECH STD. 1056
6. MANUFACTURED ALTERNATIVES APPROVED AND LISTED ON THE WisDOT PRODUCT ACCEPTABILITY LIST (PAL) MAY BE SUBSTITUTED.
7. FINISHED SIZE, INCLUDING FLAP POCKETS WHERE REQUIRED, SHALL EXTEND A MINIMUM OF 10" AROUND THE PERIMETER TO FACILITATE MAINTENANCE OR REMOVAL.
8. FLAP POCKETS SHALL BE LARGE ENOUGH TO ACCEPT WOOD 2"X4".

2
C900

SILT FENCE OR SEDIMENT SOCK

SCALE: NTS

File: V:\22.055 Ridgeway_Park CAD\P-D.dwg User: bluem Plotted: Nov 03, 2023 - 12:52pm

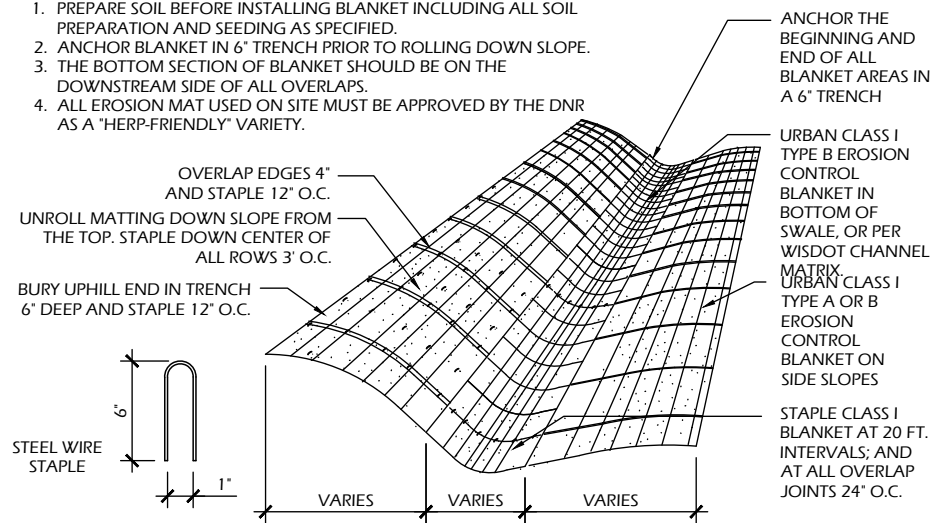
Revisions:

Project #: 22.055
Issued For: BID
Date: 11/3/2023

Sheet Number
C900

NOTES

1. PREPARE SOIL BEFORE INSTALLING BLANKET INCLUDING ALL SOIL PREPARATION AND SEEDING AS SPECIFIED.
2. ANCHOR BLANKET IN 6" TRENCH PRIOR TO ROLLING DOWN SLOPE.
3. THE BOTTOM SECTION OF BLANKET SHOULD BE ON THE DOWNSTREAM SIDE OF ALL OVERLAPS.
4. ALL EROSION MAT USED ON SITE MUST BE APPROVED BY THE DNR AS A "HERP-FRIENDLY" VARIETY.

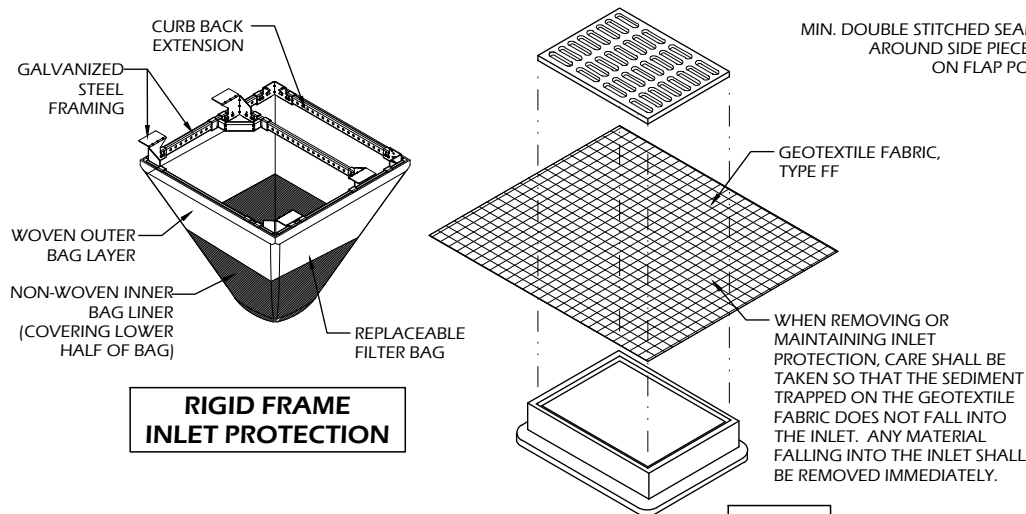


4 EROSION MAT

C901 SCALE: NTS

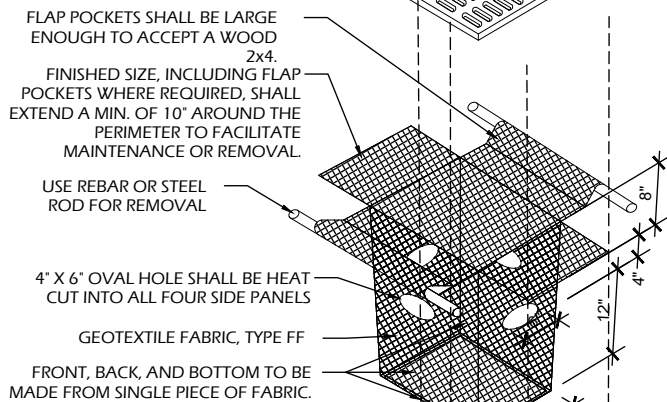
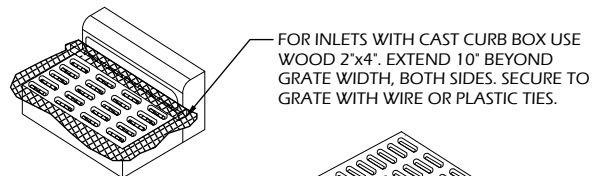
INLET PROTECTION NOTES:

1. INSTALL PER WDNR STORM WATER CONSTRUCTION TECHNICAL STANDARD 1060.
2. INLET PROTECTION TYPE B SHALL BE USED ON STRUCTURES 30" OR LESS IN DEPTH.
3. RIGID FRAME OR TYPE D INLET PROTECTION MAY BE USED AT THE DISCRETION OF THE CONTRACTOR UNLESS OTHERWISE NOTED.
4. ROUTINELY INSPECT FOR INTEGRITY AND NEEDED MAINTENANCE.
5. EMPTY SEDIMENT WHEN THE BAG IS HALF FULL OR SEDIMENT IS WITHIN 6 INCHES OF THE OVERFLOW HOLES, OR AS DIRECTED BY THE OWNER OR A/E.
6. IMMEDIATELY REMOVE ANY SEDIMENT FALLING INTO THE INLET DURING MAINTENANCE ACTIVITIES.
7. INLET PROTECTION SHALL BE REMOVED AFTER THE SITE HAS ACHIEVED 80% STABILIZATION OR AT THE END OF THE PROJECT.



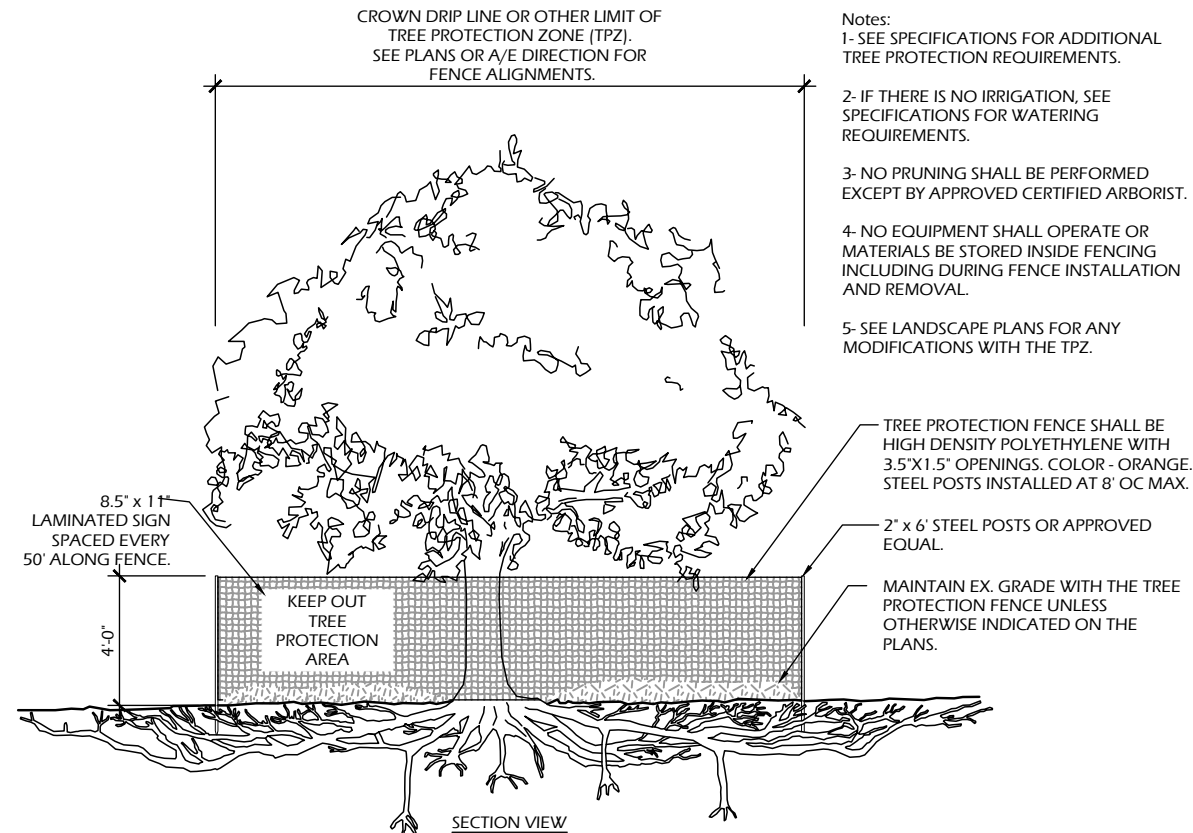
3 INLET PROTECTION TYPES B & D

C901 SCALE: NTS



TYPE B

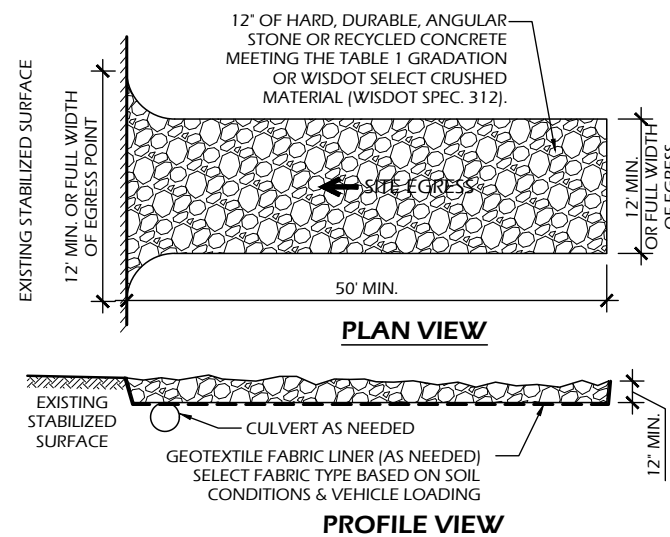
TYPE D



- Notes:
- 1- SEE SPECIFICATIONS FOR ADDITIONAL TREE PROTECTION REQUIREMENTS.
 - 2- IF THERE IS NO IRRIGATION, SEE SPECIFICATIONS FOR WATERING REQUIREMENTS.
 - 3- NO PRUNING SHALL BE PERFORMED EXCEPT BY APPROVED CERTIFIED ARBORIST.
 - 4- NO EQUIPMENT SHALL OPERATE OR MATERIALS BE STORED INSIDE FENCE INCLUDING DURING FENCE INSTALLATION AND REMOVAL.
 - 5- SEE LANDSCAPE PLANS FOR ANY MODIFICATIONS WITH THE TPZ.

2 TREE PROTECTION

C901 SCALE: NTS



SIEVE SIZE	PERCENT PASSING BY WEIGHT
3"	100
2 1/2"	90 - 100
1 1/2"	25 - 60
3/4"	0 - 20
3/8"	0 - 5

OPERATION & MAINTENANCE:

1. MONITOR TRACKING PADS FOR COMPACTION, SOIL DEPOSITS, AND MIXING OF UNDERLYING SOILS AND STONE LAYERS.
2. MAINTAIN A LOOSENED, ROUGH SURFACE BY SCRAPING, LOOSENING, OR TOP-DRESSING WITH ADDITIONAL AGGREGATE.
3. REPLACE GEOTEXTILE AND STONE IF LESS-INTENSIVE MAINTENANCE EFFORTS FAIL TO REESTABLISH EFFECTIVENESS.
4. ADD STONE AS NEEDED TO MAINTAIN THE MINIMUM PAD THICKNESS.
5. REPLACE DAMAGED OR CRUSHED CULVERTS UNDER TRACKING PAD.

1 STONE TRACKING PAD

C901 SCALE: NTS



Project Name:

Revisions:

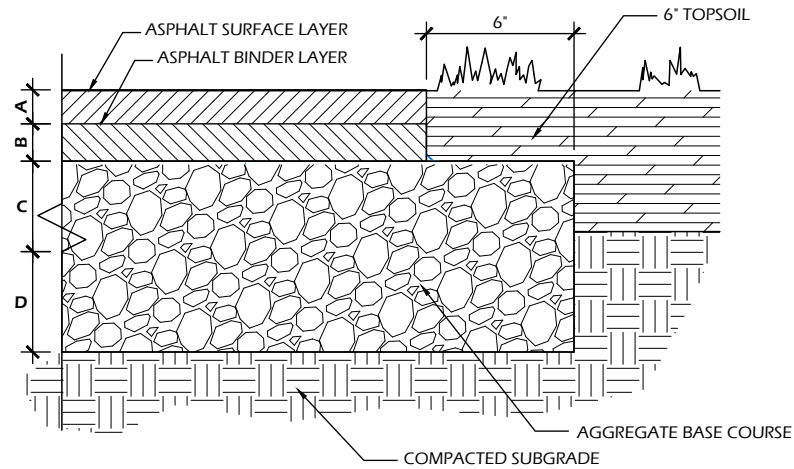
Project #: 22.055
Issued For: BID
Date: 11/3/2023

Sheet Number

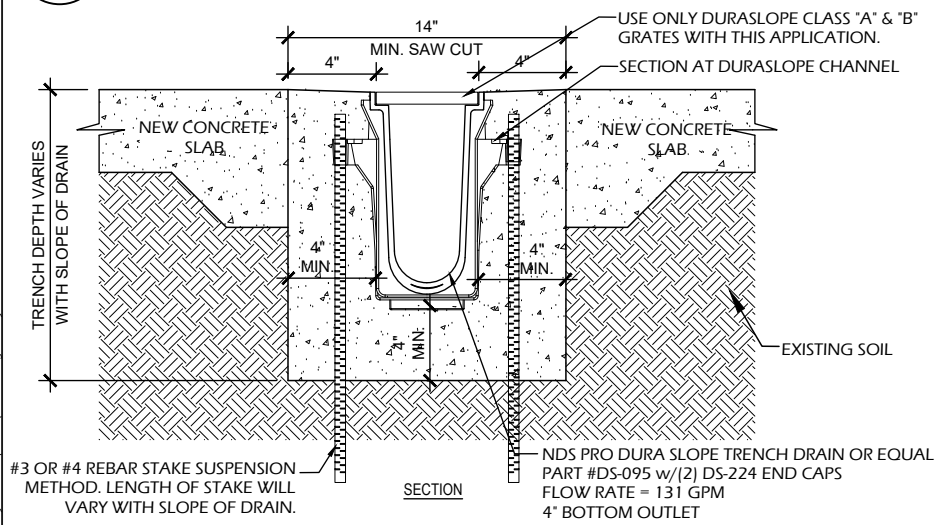
C901

File: V:\22.055 Ridgeway_Park CAD\P-D.dwg User: Bluerm Plotted: Nov 03, 2023 - 12:59pm

ASPHALT PAVEMENT TYPICAL SECTION			
	MATERIAL	MATERIAL THICKNESS (INCHES)	PAVEMENT TYPE (WISDOT)
A	BITUMINOUS UPPER LAYER	1.75	4 LT 58-28 S
B	BITUMINOUS LOWER LAYER	2.25	3 LT 58-28 S
C	3/4 IN DENSE GRADED BASE COURSE	0.0	
D	1 1/4 IN DENSE GRADED BASE COURSE	10.0	
TOTAL THICKNESS (INCHES)		14.0	

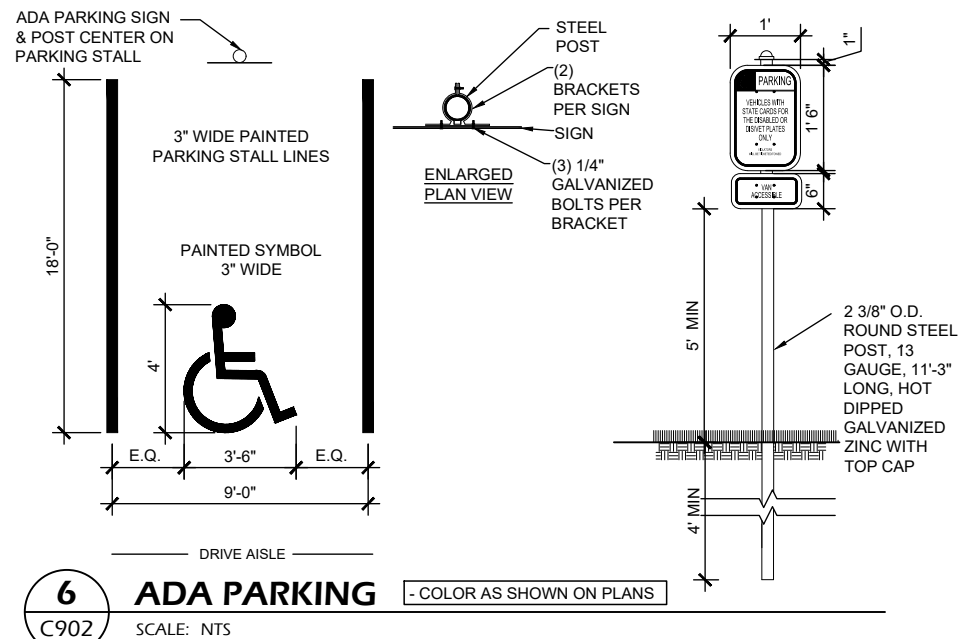


8 ASPHALT PAVEMENT - PARKING LOT
C902 SCALE: NTS

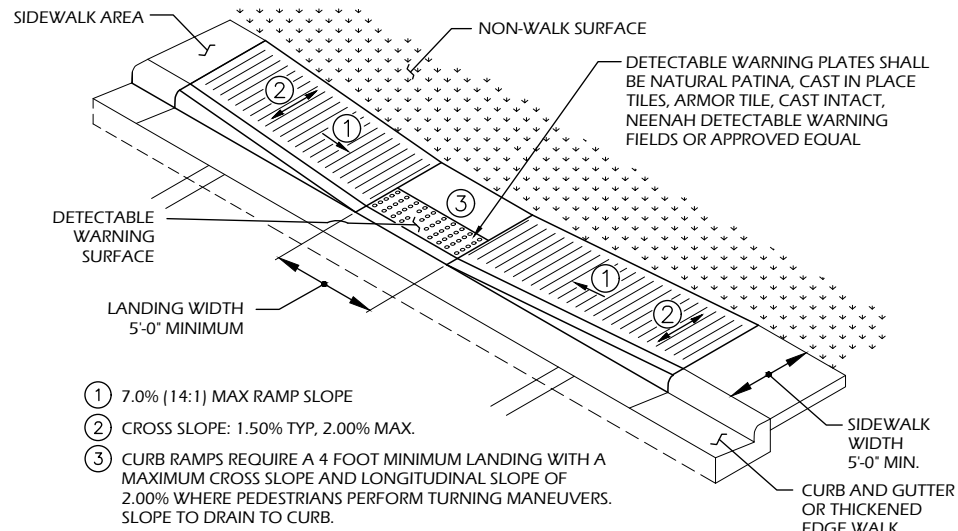


NOTES:
1. CHANNELS TO BE INSTALLED WITH BLANK GRATE. GRATE TO BE PROTECTED FROM CONCRETE POUR (COVER HOLES WITH TAPE).
2. INSTALLATION TO BE COMPLETED IN ACCORDANCE WITH MANUFACTURER'S SPECIFICATIONS.

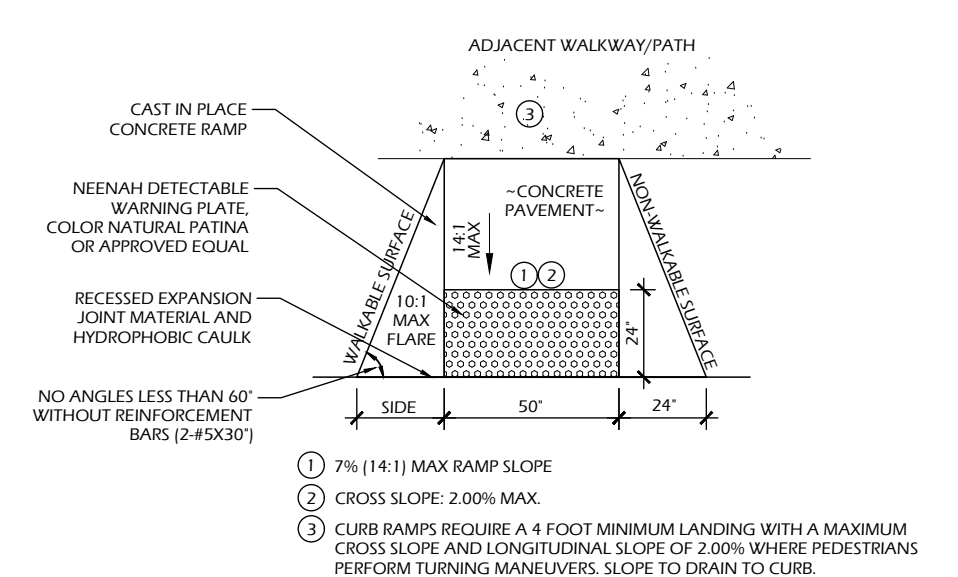
7 TRENCH DRAIN
C902 SCALE: NTS



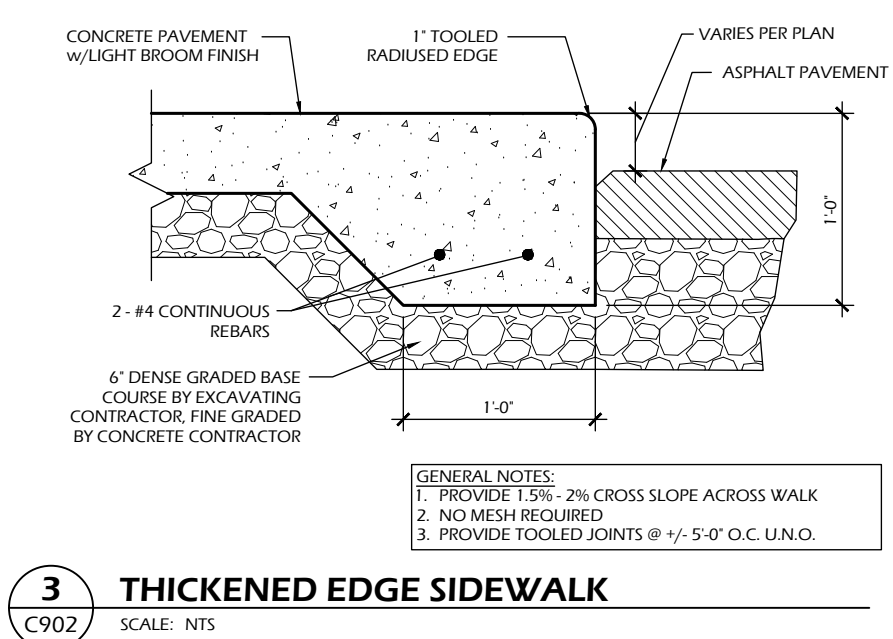
6 ADA PARKING - COLOR AS SHOWN ON PLANS
C902 SCALE: NTS



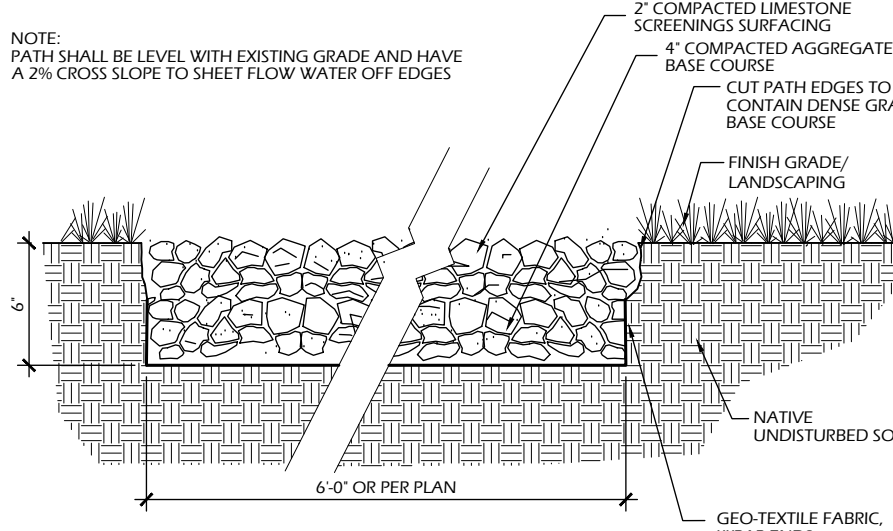
5 ADA RAMP - PARALLEL
C902 SCALE: NTS



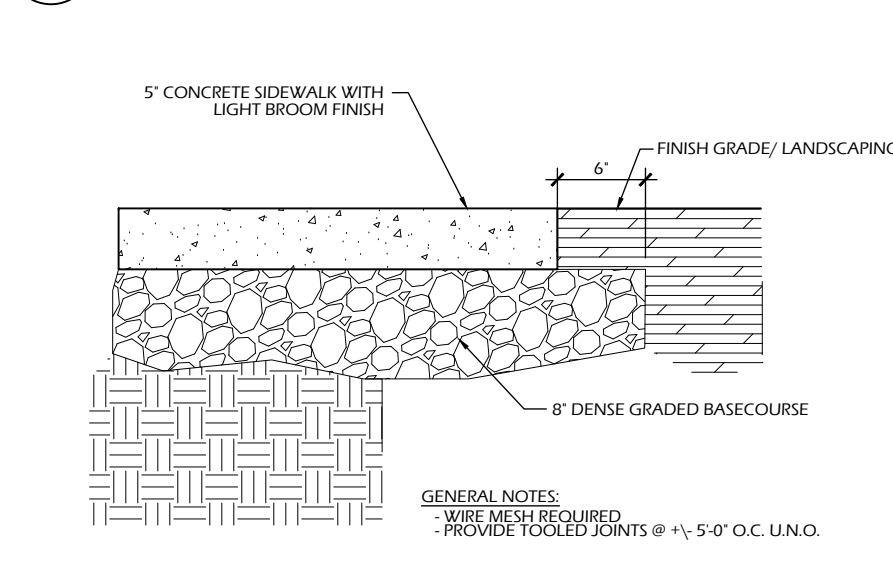
4 ADA RAMP
C902 SCALE: NTS



3 THICKENED EDGE SIDEWALK
C902 SCALE: NTS



2 LIMESTONE SCREENINGS TRAIL
C902 SCALE: NTS



1 CONCRETE PAVEMENT
C902 SCALE: NTS

ELECTRICAL SYMBOLS, ABBREVIATIONS AND NOTES:

- SYMBOLS INDICATED HERE AND NOT USED IN THE CONTRACT DOCUMENTS DO NOT APPLY TO THIS PROJECT. ADDITIONAL SYMBOLS MAY BE INDICATED IN THE CONTRACT DOCUMENTS.
- EXISTING TO REMAIN IS SHOWN WITH SOLID LIGHT LINES. NEW WORK IS SHOWN WITH SOLID HEAVY LINES.
- SEE PROJECT SPECIFICATIONS AND DRAWINGS FOR DEVICE/EQUIPMENT RATINGS.
- ALL MOUNTING HEIGHTS LISTED BELOW OR SHOWN ON DETAIL SHEETS ARE FOR STANDARD INSTALLATIONS. DEVIATIONS TO THE STANDARD MOUNTING HEIGHT MAY OCCUR AS REQUIRED BASED ON FIELD CONDITIONS. IN ALL INSTANCES COORDINATE WITH ARCHITECT AND ENGINEER.
- ALL DIMENSIONS ARE TO THE CENTER OF BOX.
- COORDINATE WORK SHOWN IN THIS DRAWING SET WITH ALL PROJECT DRAWINGS.

EQUIPMENT AND WIRING

TRANSFORMER	REMOTE GENERATOR ANNUNCIATOR
GROUND CONNECTION	PUSH BUTTON
GROUND BAR	ENGINE GENERATOR SET
NON FUSED DISCONNECT SWITCH	AUTOMATIC TRANSFER SWITCH
FUSED DISCONNECT SWITCH	MOTOR CONNECTION
STARTER/DISCONNECT SWITCH	BRANCH CIRCUIT PANEL
CIRCUIT BREAKER DISCONNECT	DISTRIBUTION PANELBOARD
MANUAL MOTOR STARTER W/OVERLOAD PROTECTION	
F = FLUSH MOUNT	S = SURFACE MOUNT
JUNCTION BOX	JUNCTION BOX - WALL

RECEPTACLES

DUPLEX RECEPTACLE MOUNTING LOCATION: WALL MOUNTING HEIGHT: 1'-6"	DUPLEX RECEPTACLE - CEILING MOUNTED MOUNTING LOCATION: CEILING
DUPLEX RECEPTACLE MOUNTING LOCATION: WALL +XX = MOUNTING HEIGHT (IN INCHES)	FLOOR BOX (OR POKE THROUGH) MOUNTING LOCATION: FLOOR
DUPLEX RECEPTACLE WEATHERPROOF MOUNTING LOCATION: WALL MOUNTING HEIGHT: 1'-6"	DUPLEX RECEPTACLE, UPPER HALF SWITCHED, LOWER HALF HOT MOUNTING LOCATION: WALL MOUNTING HEIGHT: 1'-6"
SINGLE RECEPTACLE MOUNTING LOCATION: WALL MOUNTING HEIGHT: 1'-6"	TV OUTLET WITH 120V DUPLEX RECEPTACLE IN COMMON 2 GANG BOX WITH LOW VOLTAGE BARRIER AND COMMON PLATE. TV BY OWNER. MOUNTING LOCATION: WALL +XX = MOUNTING HEIGHT (IN INCHES)
DOUBLE DUPLEX RECEPTACLE MOUNTING LOCATION: WALL MOUNTING HEIGHT: 1'-6"	

LIGHTING

WALL MOUNTED LINEAR MOUNTING LOCATION: WALL	RECESSED MOUNTED MOUNTING LOCATION: CEILING
SURFACE LINEAR MOUNTING LOCATION: CEILING	WALL MOUNTED MOUNTING LOCATION: WALL
SUSPENDED LINEAR MOUNTING LOCATION: CEILING	PENDANT AND/OR SURFACE
RECESSED GRID MOUNTED MOUNTING LOCATION: CEILING	SHADING DESIGNATES EMERGENCY POWER SOURCE (EITHER GENERATOR OR BATTERY)
1x4 RECESSED GRID MOUNTED MOUNTING LOCATION: CEILING	DIRECTIONAL INDICATOR ADDED TO FIXTURE SYMBOL TO DESIGNATE AIMING DIRECTION
2x2 RECESSED GRID MOUNTED MOUNTING LOCATION: CEILING	EXIT DIRECTIONAL ARROW
SURFACE MOUNTED MOUNTING LOCATION: CEILING	SINGLE FACE EXIT FIXTURE MOUNTING LOCATION: CEILING
SHADING DESIGNATES EMERGENCY POWER SOURCE (EITHER GENERATOR OR BATTERY)	DOUBLE FACE EXIT FIXTURE MOUNTING LOCATION: CEILING
TRACK MOUNTING LOCATION: AS NOTED	SINGLE FACE EXIT FIXTURE MOUNTING LOCATION: WALL
PHOTO EYE MOUNTING LOCATION: WALL	MOUNTING LOCATION: WALL DOUBLE FACE EXIT FIXTURE
	DOUBLE HEAD EMERGENCY FIXTURE WITH BATTERY PACK

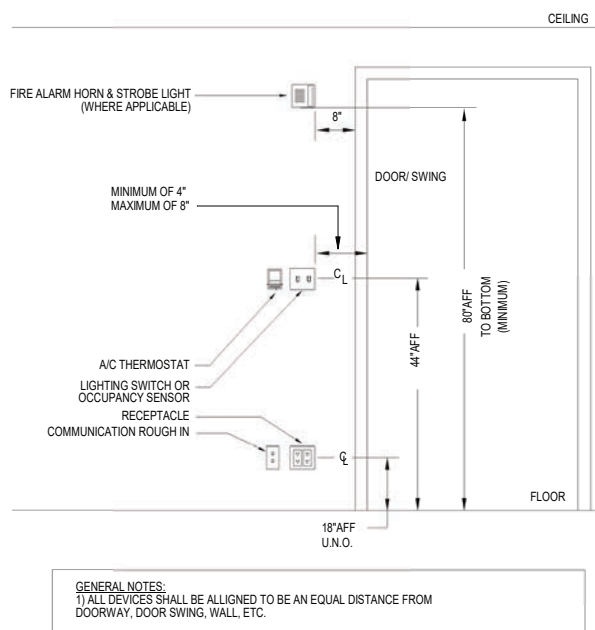
LIGHTING CONTROL DEVICES

SEE LIGHTING CONTROL DEVICE SCHEDULE FOR MORE INFORMATION.

LIGHTING CONTACTOR MOUNTING LOCATION: WALL MOUNTING HEIGHT: AS NOTED	KEY SWITCH MOUNTING LOCATION: WALL MOUNTING HEIGHT: 4'-0"
DIMMER MOUNTING LOCATION: WALL MOUNTING HEIGHT: 4'-0"	MOMENTARY CONTACT SWITCH MOUNTING LOCATION: WALL MOUNTING HEIGHT: 4'-0"
PILOT LIGHT SWITCH MOUNTING LOCATION: WALL MOUNTING HEIGHT: 4'-0"	LOW VOLTAGE SWITCH MOUNTING LOCATION: WALL MOUNTING HEIGHT: 4'-0" a,b = SWITCH DESIGNATION(S)
SINGLE POLE SWITCH MOUNTING LOCATION: WALL MOUNTING HEIGHT: 4'-0"	REMOTE CONTROL FOR MOTORIZED DAMPER MOUNTING LOCATION: WALL MOUNTING HEIGHT: 4'-0"
TWO POLE SWITCH MOUNTING LOCATION: WALL MOUNTING HEIGHT: 4'-0"	SINGLE POLE FIRE PLACE CHIMNEY FAN PROVING SWITCH MOUNTING LOCATION: WALL MOUNTING HEIGHT: 4'-0"
THREE WAY SWITCH MOUNTING LOCATION: WALL MOUNTING HEIGHT: 4'-0"	SINGLE POLE FIRE PLACE GAS SOLENOID SWITCH MOUNTING LOCATION: WALL MOUNTING HEIGHT: 4'-0"
FOUR WAY SWITCH MOUNTING LOCATION: WALL MOUNTING HEIGHT: 4'-0"	SINGLE POLE WEATHERPROOF SWITCH MOUNTING LOCATION: WALL MOUNTING HEIGHT: 4'-0"
CEILING MOUNTED OCCUPANCY SENSOR	OCCUPANCY SENSOR SWITCH MOUNTING LOCATION: WALL MOUNTING HEIGHT: 4'-0"
CEILING MOUNTED DAYLIGHT SENSOR	

SHEET SYMBOLS

LINE CONTINUE BREAK	ELEVATION DESIGNATION
DETAILS AND SECTIONS DESIGNATION	EQUIPMENT DESIGNATION TOP DESIGNATES EQUIPMENT ABBREVIATION BOTTOM DESIGNATES EQUIPMENT
NEW WORK CONNECTION TO EXISTING WORK DESIGNATION	PLAN CONTINUATION DESIGNATION
DETAIL REFERENCE TOP DESIGNATES DETAIL NUMBER BOTTOM DESIGNATES ON WHICH SHEET DETAIL APPEARS	REVISION NUMBER DESIGNATION
KEYED NOTE DESIGNATION	
SECTION REFERENCE TOP DESIGNATES SECTION NUMBER BOTTOM DESIGNATES ON WHICH SHEET SECTION APPEARS	
SECTION REFERENCE TOP DESIGNATES SECTION NUMBER BOTTOM DESIGNATES ON WHICH SHEET SECTION APPEARS	



ABBREVIATIONS

Abbreviation	Description
A	AMPRES
AC	ABOVE COUNTER TOP
ACT	ACOUSTICAL CEILING TILE
ADA	AMERICANS WITH DISABILITIES ACT
AF	AMPERE FRAME
AFF	ABOVE FINISHED FLOOR
AFG	ABOVE FINISHED GRADE
AIC	AMP INTERRUPTING CAPACITY
ALT	ALTERNATIVE / ALTERNATE
ALUM	ALUMINUM
AP	ACCESS PANEL
ARCH	ARCHITECT / ARCHITECTURAL
ASC	ABOVE SUSPENDED CEILING
AT	AMPERE TRIP
AUTO	AUTOMATIC

BATS	BYPASS AUTOMATIC TRANSFER SWITCH
BC	BARE COPPER
BFC	BELOW FINISHED CEILING
BFF	BELOW FINISHED FLOOR
BFL	BELOW FLOOR LEVEL
BLDG	BUILDING
BLKG	BLOCKING
BO	BOTTOM OF
BRKR	BREAKER
BT	BATH TUB

CB	CIRCUIT BREAKER
CCT	CIRCUIT
CD	CEILING DIFFUSER
CF/OI	CONTRACTOR FURNISHED / OWNER INSTALLED
CF/CI	CONTRACTOR FURNISHED / CONTRACTOR INSTALLED
CL	CENTER LINE
CLG	CEILING
CLR	CLEAR(ANCE)
CMU	CONCRETE MASONRY UNIT
CND	CONDUIT
CO	CLEAN OUT
CONC	CONCRETE
CONT	CONTINUOUS / CONTINUE
CONTR	CONTRACTOR
CR	CONTROL RELAY
CT	CURRENT TRANSFORMER
CW	COLD WATER SUPPLY
CWFU	COLD WATER FIXTURE UNITS

DB	DIRECT BURIAL
DBC	DESIGN BUILD CONTACTOR
DC	DIRECT CURRENT
DED	DEDICATED
DET	DETAIL
DF	DRINKING FOUNTAIN
DIA	DIAMETER
DISC	DISCONNECT
DIV	DIVISION
DN	DOWN
DP	DISTRIBUTION PANEL
DS	DISCONNECT SWITCH
DUC	DOOR UNDER CUT
DWGS	DRAWINGS

(E)	EXISTING
EXIST	EXISTING
EC	ELECTRICAL CONTRACTOR
EDB	ELECTRIC DUCT BANK
EG	EQUIPMENT GROUND
EG	EXHAUST GRILLE
EGS	ENGINE GENERATOR SET
EJ	EXPANSION JOINT
EL	ELEVATION
ELEC	ELECTRICAL
ELEC	ELECTRICAL/ELECTRICAL
ELL	EMERGENCY LIFE SAFETY LIGHTING
ELP	EMERGENCY LIFE SAFETY POWER
EMER	EMERGENCY
EMI	ELECTROMAGNETIC INTERFERENCE
EMT	ELECTRICAL METALLIC TUBING
EQ	EQUAL
EQUIP	EQUIPMENT
ES	EQUIPMENT SUPPLIER
ETR	EXISTING TO REMAIN
EWC	ELECTRICAL WATER COOLER
EWHR	ELECTRIC WATER HEATER
EXP	EXPOSED
EXT	EXTERIOR

FA	FIRE ALARM
FACP	FIRE ALARM CONTROL PANEL
FCO	FLOOR CLEANOUT
FCU	FAN COIL UNIT
FD	FLOOR DRAIN
FDR	FEEDER
FDS	FUSED DISCONNECT SWITCH
FE / FEC	FIRE EXTINGUISHER (CABINET)
FF / FFE	FINISH FLOOR (ELEVATION)
FF&E	FIXTURES, FURNISHINGS & EQUIPMENT
FFA	FROM FLOOR ABOVE
FFB	FROM FLOOR BELOW
FI	FILM ILLUMINATOR
FIN	FINISH

Abbreviation	Description
FIXT	FIXTURE
FL	FLOOR LINE
FL / FLR	FLOOR LINE
FLA	FULL LOAD AMPRES
FLEX	FLEXIBLE
FLOUR	FLOURESCENT
FS	FLOW SWITCH
FSS	FUSED SAFETY SWITCH

GA	GAUGE
GALV	GALVANIZED
GC	GENERAL CONTRACTOR
GD	GARBAGE DISPOSER
GFCI	GROUND FAULT CIRCUIT INTERRUPTER
GFI	GROUND FAULT INTERRUPTER
GFP	GROUND FAULT PROTECTION
GI	GREASE INTERCEPTOR
GND	GROUND
GPM	GALLONS PER MINUTE
GRC	GALVANIZED RIGID CONDUIT
GTB	GROUND TERMINAL BOX

HB	HOSE BIBB
HC	HVAC CONTRACTOR
HD	HUB DRAIN
HWDR	HARDWARE
HH	HANDHOLE
HOA	HAND OFF AUTOMATIC
HP	HORSE POWER
HT	HEIGHT/HEAT TRACE
HV	HIGH VOLTAGE
HW	HOT WATER SUPPLY
HWCP	HOT WATER RECIRCULATION PUMP
HWFU	HOT WATER FIXTURE UNITS

ID	INSIDE DIAMETER
IE	INVERT ELEVATION
IG	ISOLATED GROUND
IMC	INTERMEDIATE METAL CONDUIT
INCAND	INCANDESCENT
INSUL	INSULATION
INT	INTERIOR

JB	JUNCTION BOX
KO	KNOCK-OUT
KS	KITCHEN SINK
KV	KILOVOLT
KVA	KILOVOLT-AMPRES
KW	KILOWATT
KWH	KILOWATT HOURS

L	LAVATORY
LAN	LOCAL AREA NETWORK
LED	LIGHT EMITTING DIODE
LGT	LIGHT FIXTURE
LTCP	LOCAL TEMPERATURE CONTROL PANEL
LTG	LIGHTING
LTS	LIGHTS
LV	LOW VOLTAGE

MAS	MASONRY
MATL	MATERIAL
MAX	MAXIMUM
MC	MECHANICAL CONTRACTOR
MCB	MAIN CIRCUIT BREAKER
MCC	MOTOR CONTROL CENTER
MCP	MOTOR CIRCUIT PROTECTOR
MDF	MEDIUM DENSITY FIBERBOARD
MDP	MAIN DISTRIBUTION PANEL
MECH	MECHANICAL
MG	METAL GRATE
MH	MANHOLE
MIN	MINIMUM
MLO	MAIN LUGS ONLY
MPTB	MUSIC AND PAGE TERMINAL BOX
MTD	MOUNTED
MTG	MOUNTING
MTG	MOUNTING HEIGHT
HGT	HEIGHT
MTL	METAL
MTR	MOTOR / METER
MV	MEDIUM VOLTAGE

NA	NOT APPLICABLE
NC	NEW CONNECTION/NORMALLY CLOSED
NFD	NON-FUSED DISCONNECT
NFSS	NON-FUSED SAFETY SWITCH
NIC	NOT IN CONTRACT
NL	NIGHT LIGHT
NO	NORMALLY OPEN
NTS	NOT TO SCALE

OC	(ON CENTER(S))
OD	OUTSIDE DIAMETER
OED	OPEN ENDED DUCT
OFCI	OWNER FURNISHED / CONTRACTOR INSTALLED
OFOI	OWNER FURNISHED / OWNER INSTALLED
OFS	OVERFLOW SCUPPER
OH	OVERHEAD
OPNG	OPENING

Abbreviation	Description
OZ	OUNCE

P	POLE
PB	PULL BOX / PUSHBUTTON
PC	PLUMBING CONTRACTOR / PHOTOCELL
PDU	POWER DISTRIBUTION UNIT
PF	POWER FACTOR
PH	PHASE
PLBG	PLUMBING
PLY	PLYWOOD
PNL	PANEL
POD	POWER OPERATED DAMPER
PRV	POWER ROOF VENTILATOR
PT	POTENTIAL TRANSFORMER
PTRV	POWER TYPE ROOF VENTILATOR
PWR	POWER

QTY	QUANTITY
-----	----------

R	RISER
RAD	RADIUS
RCP	RECIRCULATING PUMP
RD	ROOF DRAIN
REC	RECESSED
RECEPT	RECEPTACLE
REF	REFERENCE / REFER TO
REL	RELOCATE
REQD	REQUIRED
RGIP	REMOTE GROUND INDICATOR PANEL
RO	ROUGH OPENING
RTU	ROOF TOP UNIT

SD	SUPPLY DIFFUSER
SF	SQUARE FOOT/FEET
SH	SHOWER
SHT	SHEET
SIG	SIGNAL
SIM	SIMILAR
SP	SUMP PUMP
SPEC	SPECIFICATION
SS	SAFETY SWITCH / STAINLESS STEEL
STA	STATION
STR	STARTER
SUSP	SUSPENDED
SW	SWITCH
SWBD	SWITCHBOARD
SWGR	SWITCHGEAR
SYST	SYSTEM

TCC	TEMPERATURE CONTROLS CONTRACTOR
TCP	TEMPERATURE CONTROL PANEL
TEL	TELEPHONE
TFA	TO FLOOR ABOVE
TFB	TO FLOOR BELOW
TG	TRANSFER GRILLE
TB	TOP OF BEAM
TCC	TOP OF CONCRETE
TOD	TOP OF DECK
TOB	TOP OF DUCTBANK
TOF	TOP OF FOOTING
TOMH	TOPP OF MANHOLE
TOP	TOP OF PARAPET
TOS	TOP OF STEEL
TOW	TOP OF WALL
TPART	TOILET PARTITION
TS	TAMPER SWITCH / TIME SWITCH
TVSS	TELEVISION VOLTAGE SURGE SUPPRESSION
TYP	TYPICAL

UC	UNDER COUNTER
UF	UNDER FLOOR
UG	UNDERGROUND
UH	UNIT HEATER
UNO	UNLESS NOTED OTHERWISE
UPS	UNINTERRUPTED POWER SUPPLY

V	VOLTAGE / VENT
VFD	VARIABLE FREQUENCY DRIVE
VIF	VERIFY IN FIELD
VP	VAPOR PROOF
VS	VENT STACK
VTR	VENT THROUGH ROOF

W	WIRE
W	WITH
WC	WATER CLOSET
WCO	WALL CLEANOUT
WH	WALL HYDRANT
WH	WATER HEATER
WP	WEATHERPROOF
WS	WATER SOFTENER
WT	WATER TIGHT

XFMR	TRANSFORMER
XP	EXPLOSION PROOF

#	NUMBER / POUND
&	AND
@	AT

PARKITECTURE + PLANNING
901 Deming Way, Suite 102
Madison, WI 53717
608.886.6808



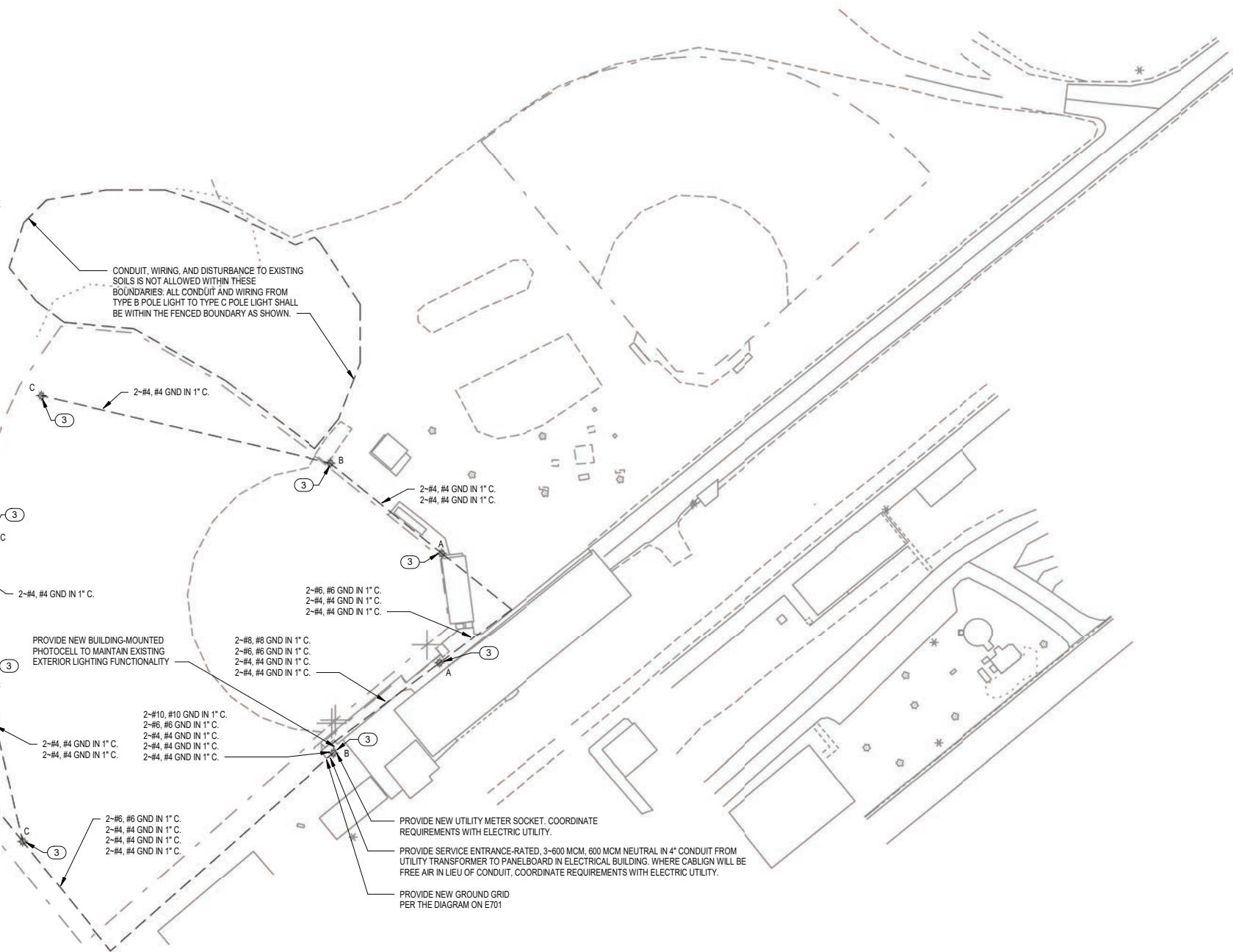
ICONICA
901 DEMING WAY / MADISON, WI 53717
PH: 608.864.3500 / FX: 608.864.3535
iconicadrawings.com

COMMUNITY PARK IMPROVEMENTS
HUGHETTE ROAD
RIDGEWAY, WI 53582

Project Name: COMMUNITY PARK IMPROVEMENTS
HUGHETTE ROAD
RIDGEWAY, WI 53582
Sheet Title: ABBREVIATIONS, SYMBOLS AND NOTES

REVISIONS:	ISSUE	DESCRIPTION	DATE
Project #:	20235700		
Issued For:			
Date:			09/08/23
Sheet Number	E001		

TYPE C LIGHT FIXTURES AND POLES SHOWN OUTSIDE OF THE FENCED BOUNDARY SHALL BE PROVIDED AS PART OF THE BID ALTERNATE ONLY. WOODEN POLES ARE EXISTING TO REMAIN AND SHALL BE REUSED AS PART OF THE BASE BID.



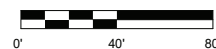
ELECTRICAL GENERAL NOTES:

1. GENERAL NOTES AND KEYED NOTES ARE TYPICAL ACROSS ALL DRAWINGS. KEYED NOTES MAY NOT BE USED OR BE APPLICABLE TO ALL DRAWINGS. REFER TO DRAWING E001 FOR ADDITIONAL NOTES.
2. HANDHOLES AND PULL BOXES ARE NOT SPECIFICALLY SHOWN. ELECTRICAL CONTRACTOR SHALL PROVIDE HANDHOLES AND PULL BOXES MOUNTED TO POLES. QUANTITIES AND SIZES AS REQUIRED BY THE NEC AND FOR A COMPLETE AND FUNCTIONAL INSTALLATION. IF HANDHOLES ARE PROVIDED THEY SHALL BE LOCATED OUTSIDE OF THE BALL DIAMOND FENCE LINES TO NOT IMPEDE PLAY.
3. ALL CONDUIT ROUTES ON THIS DRAWING ARE SCHEMATIC ONLY. ELECTRICAL CONTRACTOR SHALL PROVIDE ALL CONDUITS, INCLUDING THOSE NOT SPECIFICALLY SHOWN, FOR A COMPLETE AND FUNCTIONAL INSTALLATION.

ELECTRICAL KEYED NOTES:

- 1 SCOREBOARD. PROVIDE NEW LOCKABLE DISCONNECTING MEANS IN ACCORDANCE WITH THE NEC. DISCONNECTING MEANS NOT SPECIFICALLY SHOWN.
- 2 ELECTRICAL BUILDING. PROVIDE NEW PANELBOARD AS SCHEDULED ON E701. NEW NEMA 5-20R RECEPTACLE WITH GFCI PROTECTION, SURFACE-MOUNTED STRIP LIGHT (LITHONIA CSS-L48-400LM-MVOLT-35K-80CRI, OR EQUAL) WITH TOGGLE ON-OFF WALL SWITCH, LIGHTING TIMECLOCK (INTERMATIC T101, OR EQUAL), TYPE 2 SPD (L-N: 700V, L-G: 1000V, L-L: 1000V, SCCR: 100 KA, 20 KA NOMINAL RATING, EATON, SQUARE D, LEVITON, LIEBERT, ABB, OR EQUAL. CONFIRM CIRCUIT BREAKER SIZE IN PANELBOARD WITH SPD MANUFACTURER PRIOR TO ORDERING) AND INSTALL MANUFACTURER-FURNISHED BALL DIAMOND LIGHTING CONTROL PANEL WITH LIGHTING CONTACTORS. EXISTING EQUIPMENT AND FEEDERS SHALL TIE INTO EXISTING CIRCUITS AS SHOWN IN THE PANEL SCHEDULE ON E701.
- 3 PROVIDE GROUND ROD AND #6 GROUND WIRE CONNECTOR TO GROUND ROD AND POLE TO GROUND LIGHT POLE IN ACCORDANCE WITH THE NEC.
- 4 BID ALTERNATE: INSTALL OWNER-FURNISHED LIGHT POLES FOR EXTERIOR ATHLETIC LIGHTING.

1 ELECTRICAL SITE
SCALE: 1" = 40'-0"



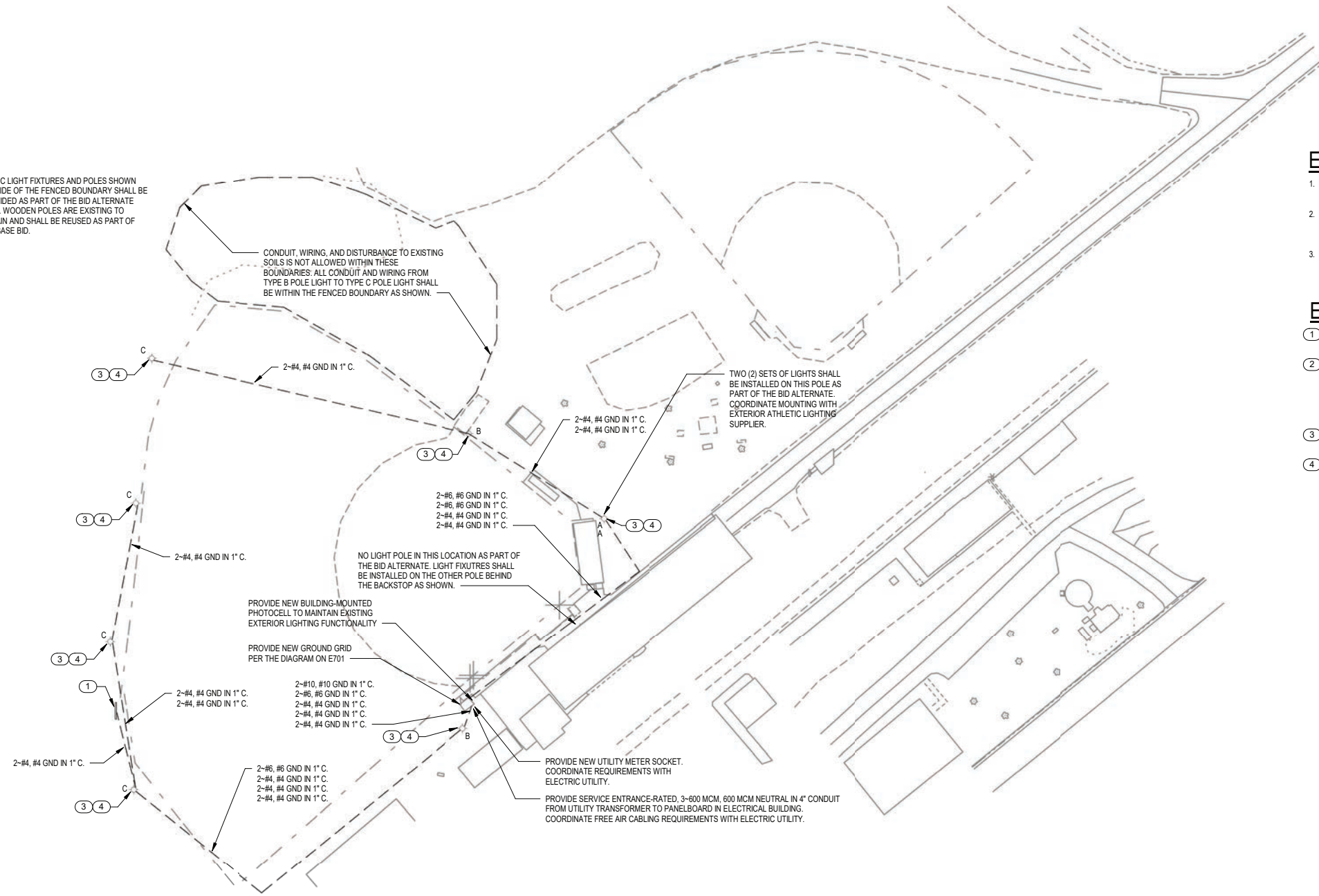
REVISIONS:

ISSUE	DESCRIPTION	DATE
-------	-------------	------

Project #: 20235700
Issued For:
Date: 09/08/2023

Sheet Number
E100

TYPE C LIGHT FIXTURES AND POLES SHOWN OUTSIDE OF THE FENCED BOUNDARY SHALL BE PROVIDED AS PART OF THE BID ALTERNATE ONLY. WOODEN POLES ARE EXISTING TO REMAIN AND SHALL BE REUSED AS PART OF THE BASE BID.



1
E100A **ELECTRICAL SITE BID ALTERNATE**
SCALE: 1" = 40'-0"



ELECTRICAL GENERAL NOTES:

1. GENERAL NOTES AND KEYED NOTES ARE TYPICAL ACROSS ALL DRAWINGS. KEYED NOTES MAY NOT BE USED OR BE APPLICABLE TO ALL DRAWINGS. REFER TO DRAWING E001 FOR ADDITIONAL NOTES.
2. HANDHOLES AND PULL BOXES ARE NOT SPECIFICALLY SHOWN. ELECTRICAL CONTRACTOR SHALL PROVIDE HANDHOLES AND PULL BOXES MOUNTED TO POLES, QUANTITIES AND SIZES AS REQUIRED BY THE NEC AND FOR A COMPLETE AND FUNCTIONAL INSTALLATION. IF HANDHOLES ARE PROVIDED THEY SHALL BE LOCATED OUTSIDE OF THE BALL DIAMOND FENCE LINES TO NOT IMPEDE PLAY.
3. ALL CONDUIT ROUTES ON THIS DRAWING ARE SCHEMATIC ONLY. ELECTRICAL CONTRACTOR SHALL PROVIDE ALL CONDUITS, INCLUDING THOSE NOT SPECIFICALLY SHOWN, FOR A COMPLETE AND FUNCTIONAL INSTALLATION.

ELECTRICAL KEYED NOTES:

1. SCOREBOARD. PROVIDE NEW LOCKABLE DISCONNECTING MEANS IN ACCORDANCE WITH THE NEC. DISCONNECTING MEANS NOT SPECIFICALLY SHOWN.
2. ELECTRICAL BUILDING. PROVIDE NEW PANELBOARD AS SCHEDULED ON E701. NEW NEMA 5-20R RECEPTACLE WITH GFCI PROTECTION. SURFACE-MOUNTED STRIP LIGHT (LITHONIA CSS-L48-4000LM-MVOLT-35K-80CRI, OR EQUAL) WITH TOGGLE ON-OFF WALL SWITCH, LIGHTING TIMECLOCK (INTERMATIC T101, OR EQUAL), TYPE 2 SPD (L-N: 700V, L-G: 1000V, L-L: 1000V, SCCR: 100 kA, 20 kA NOMINAL RATING, EATON, SQUARE D, LEVITON, LIEBERT, ABB, OR EQUAL. CONFIRM CIRCUIT BREAKER SIZE IN PANELBOARD WITH SPD MANUFACTURER PRIOR TO ORDERING) AND INSTALL MANUFACTURER-FURNISHED BALL DIAMOND LIGHTING CONTROL PANEL WITH LIGHTING CONTACTORS. EXISTING EQUIPMENT AND FEEDERS SHALL TIE INTO EXISTING CIRCUITS AS SHOWN IN THE PANEL SCHEDULE ON E701.
3. PROVIDE GROUND ROD AND #6 GROUND WIRE CONNECTOR TO GROUND ROD AND POLE TO GROUND LIGHT POLE IN ACCORDANCE WITH THE NEC.
4. BID ALTERNATE: INSTALL OWNER-FURNISHED LIGHT POLES FOR EXTERIOR ATHLETIC LIGHTING.

REVISIONS:

ISSUE	DESCRIPTION	DATE

Project #: 20235700
Issued For:
Date: 09/08/23

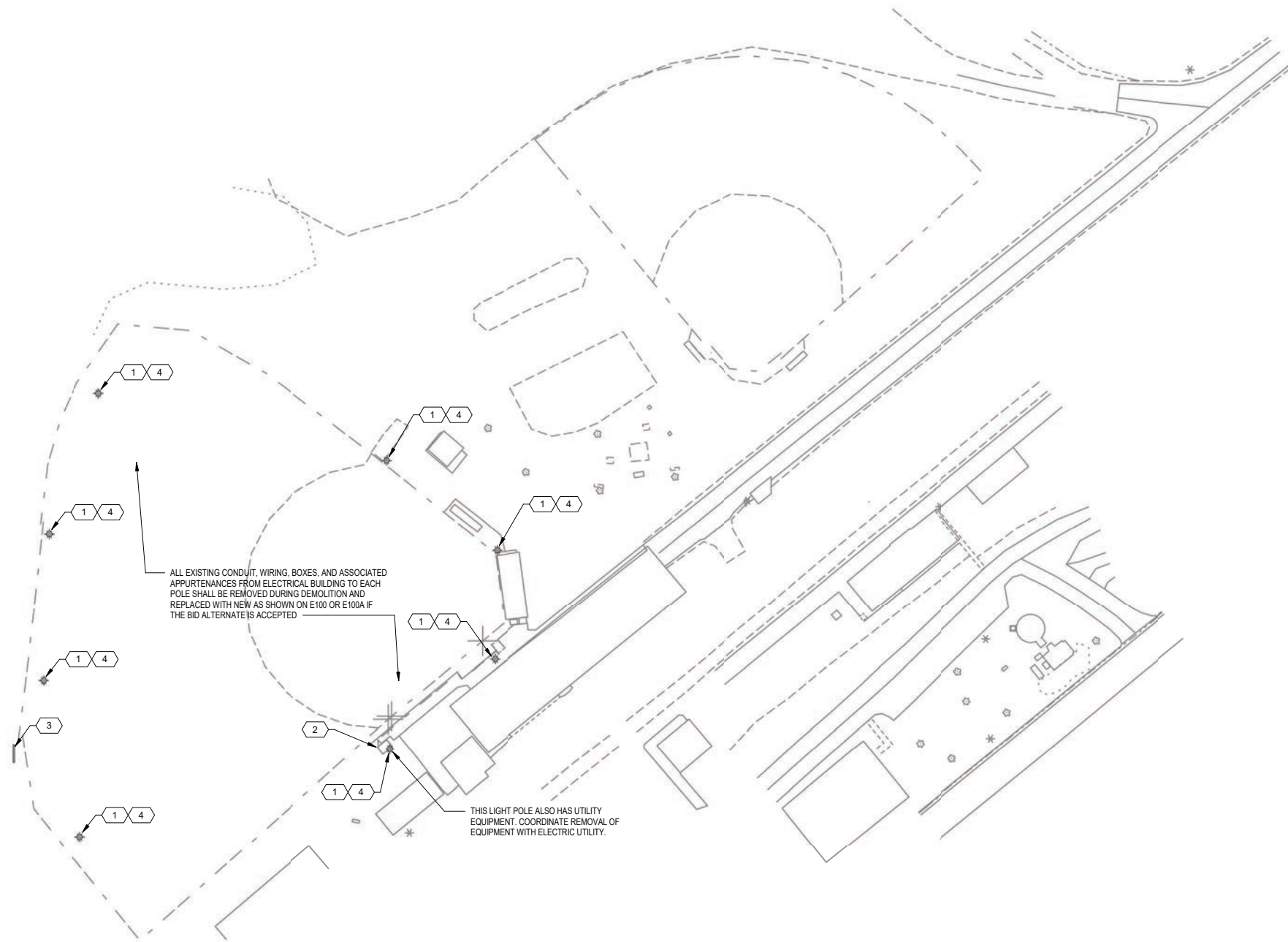
Sheet Number
E100A

ELECTRICAL DEMOLITION GENERAL NOTES:

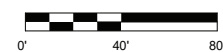
1. REMOVE ALL EXISTING ELECTRICAL EQUIPMENT AND MATERIALS ASSOCIATED WITH THE ITEMS BEING REMOVED AND SHOWN ON THIS DRAWING, AS WELL AS ALL EXISTING ELECTRICAL DEVICES, MATERIALS, AND EQUIPMENT NOT BEING REUSED.
2. PATCH ALL STRUCTURE HOLES AND DEFORMATIONS RESULTING FROM DEMOLITION WORK TO MATCH EXISTING INSTALLATION.
3. RECONNECT OR ALTER AND EXISTING EXISTING CONDUIT AND WIRING FOR EQUIPMENT AND CIRCUITS EXISTING TO REMAIN TO MAINTAIN EXISTING FUNCTIONALITY.
4. THE LOCATIONS AND ELEVATIONS OF EQUIPMENT AND COMPONENTS ARE APPROXIMATE. CONTRACTOR SHALL FIELD VERIFY THE LOCATIONS AND ELEVATIONS OF ALL EXISTING EQUIPMENT AND COMPONENTS IN ORDER TO PERFORM THE CONSTRUCTION SHOWN ON THESE DRAWINGS.
5. NOT ALL EXISTING EQUIPMENT, PIPING, OR CONDUIT SHON. EXISTING EQUIPMENT AND COMPONENTS WERE OBTAINED FROM FIELD MEASUREMENTS. CONTRACTOR IS RESPONSIBLE FOR VERIFYING THE ACCURACY OF EXISTING INFORMATION AS REQUIRED FOR NEW CONSTRUCTION.

ELECTRICAL DEMOLITION KEYED NOTES:

- 1 REMOVE LIGHT FIXTURES FROM POLE AND ALL ASSOCIATED APPURTENANCES BACK TO SOURCE. POLE SHALL REMAIN FOR INSTALLATION OF NEW LIGHT FIXTURES AND GROUNDING SYSTEM. (POLE SHALL REMAIN AS PART OF BASE BID, REMOVAL OF POLE AND ASSOCIATED APPURTENANCES SHALL OCCUR IN THE BID ALTERNATE AS NOTED ON THESE DRAWINGS.)
- 2 ELECTRICAL BUILDING. REMOVE PANELBOARD, BALL DIAMOND LIGHTING CONTROL PANEL, GROUND GRID, WALL SWITCH, RECEPTACLE, LIGHTING TIMECLOCK, EXTERIOR PHOTOCELL, AND ALL ASSOCIATED CONDUIT, WIRING, UTILITY METER AND ASSOCIATED APPURTENANCES. COORDINATE UTILITY EQUIPMETN WITH UTILITY COMPANY. EQUIPMENT SHALL BE REPLACED IN KIND AS SHOWN ON E100 OR E100A IF THE BID ALTERNATE IS ACCEPTED.
- 3 SCOREBOARD. REMOVE ASSOCIATED DISCONNECT SWITCH AND CONDUIT AND WIRING BACK TO SOURCE. PREPARE FOR INSTALLATION OF NEW CONDUIT, WIRING, AND DISCONNECT SWITCH AS SHOWN ON E100 OR E100A IF THE BID ALTERNATE IS ACCEPTED.
- 4 BID ALTERNATE: REMOVE LIGHT POLES AND ASSOCIATED APPURTENANCES. PADDING ON LIGHT POLES SHALL BE SAVED FOR REINSTALLATION ON NEW POLES WHERE SHOWN ON E100A.



1 ELECTRICAL SITE DEMO
E100D SCALE: 1" = 40'-0"



REVISIONS:

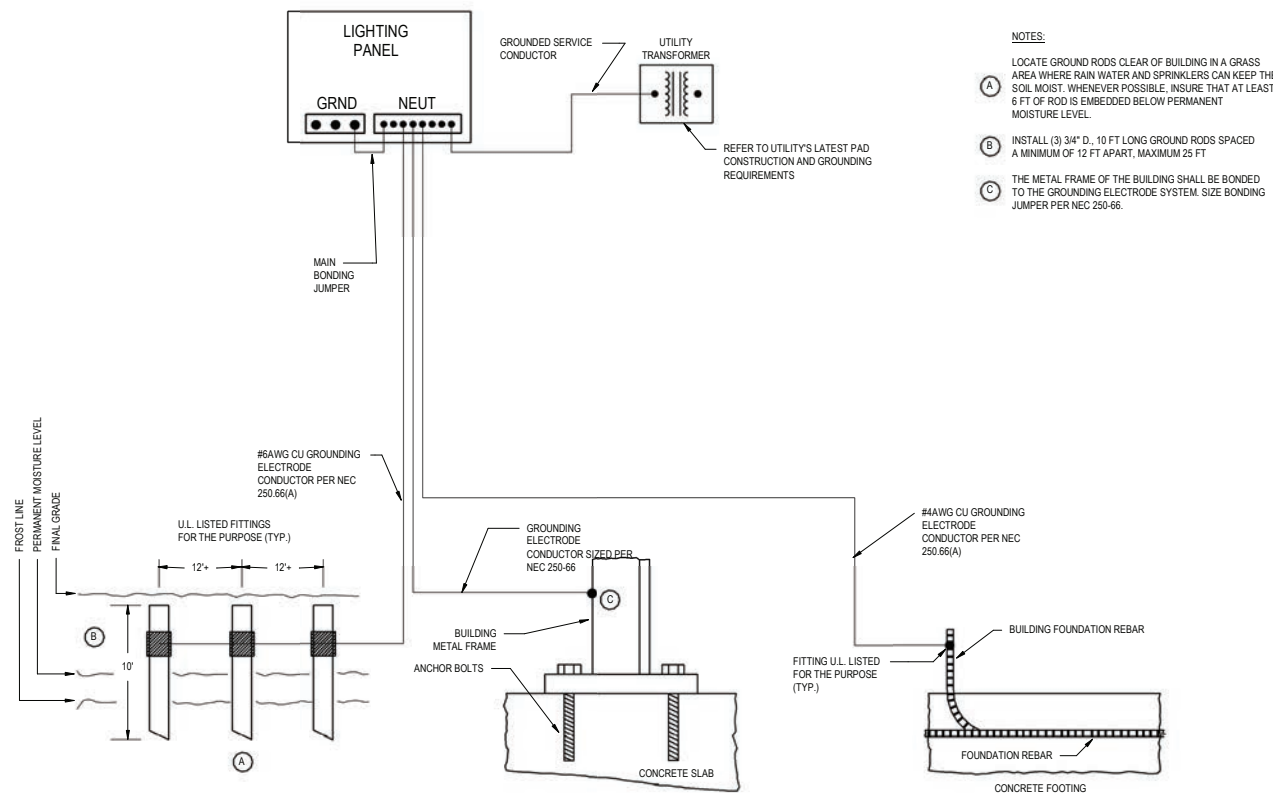
ISSUE	DESCRIPTION	DATE
-------	-------------	------

Project #: 20235700
Issued For:
Date: 09/08/2023

Sheet Number
E100D

LIGHTING FIXTURE SCHEDULE									
TYPE	DESCRIPTION	MANUFACTURER	MODEL NUMBER	VOLTAGE	WATTS	LAMP	MOUNTING	NOTES	
A	BALL DIAMOND LIGHTING	WILL - WISCONSIN LIGHTING LAB	WS-KB848-57-8V-8W-8K-APY-WMP12HP w/ VIS-PDH & VIS-RPCE-8W-8AV-LG-PS8 & NP-A-ACR-BTP-4-2-STLD-180-SSF	240V	5.384 KW	LED	POLE	LIGHT FIXTURES SHALL BE MOUNTED ON EXISTING POLE USING MANUFACTURER-RECOMMENDED HARDWARE. HARDWARE SHALL BE PROVIDED BY ELECTRICAL CONTRACTOR.	
B	BALL DIAMOND LIGHTING	WILL - WISCONSIN LIGHTING LAB	WS-KB848-57-8V-8W-8K-APY-WMP12HP w/ VIS-PDH & VIS-RPCE-8W-8AV-LG-PS8 & NP-A-ACR-BTP-4-2-STLD-180-SSF	240V	5.384 KW	LED	POLE	LIGHT FIXTURES SHALL BE MOUNTED ON EXISTING POLE USING MANUFACTURER-RECOMMENDED HARDWARE. HARDWARE SHALL BE PROVIDED BY ELECTRICAL CONTRACTOR.	
C	BALL DIAMOND LIGHTING	WILL - WISCONSIN LIGHTING LAB	WS-KB848-57-8V-8W-8K-APY-WMP12HP w/ VIS-PDH & VIS-RPCE-8W-8AV-LG-PS8 & NP-A-ACR-BTP-4-2-STLD-180-SSF	240V	5.384 KW	LED	POLE	LIGHT FIXTURES SHALL BE MOUNTED ON EXISTING POLE USING MANUFACTURER-RECOMMENDED HARDWARE. HARDWARE SHALL BE PROVIDED BY ELECTRICAL CONTRACTOR.	

LIGHTING PANEL												
Source: 120/240V, 1ø, 3W				Enclosure: NEMA 1				Mounting: Surface		Surface: Copper		
Main Breaker: 400A MCB								Main Bus: SCIC		11 kAIC		
Location: Electrical Building												
Room Number/Description	Amps	Poles	Ckt. #	Phase A	Phase B	Phase A	Phase B	Ckt. #	Amps	Poles	Room Number/Description	
Shelter Building *	100	2	1	0	0	0	0	2	20	2	Basketball Lights *	
YardLight *	15	1	5	0	0	0	0	6	15	1	Contact B-Ball *	
Temp Power - Stage *	30	2	7	0	0	0	0	8	100	2	Food Stand *	
GFI in Dugout *	20	1	11	0	0	0	0	12	20	1	Convenience Outlets *	
Unlabeled Circuit Breaker *	100	2	13	0	0	0	0	14	20	1	Convenience Outlets *	
			15	0	0	0	0	16	20	1	Convenience Outlets *	
Ball Diamond Lighting Contactor (A)	30	2	17	2652		1768		18	30	2	Ball Diamond Lighting Contactor (C)	
			19		2652		1768	20				
Ball Diamond Lighting Contactor (A)	30	2	21	2652		1768		22	30	2	Ball Diamond Lighting Contactor (C)	
			23		2652		1768	24				
Ball Diamond Lighting Contactor (B)	30	2	25	2652		1768		26	30	2	Ball Diamond Lighting Contactor (C)	
			27		2652		1768	28				
Ball Diamond Lighting Contactor (B)	30	2	29	2652		1768		30	30	2	Ball Diamond Lighting Contactor (C)	
			31		2652		1768	32				
Ball Diamond Lighting Control Panel Control Circuit	20	1	33	1000		0		34	30	2	Surge Protection Device (SPD) +	
Space	-	1	35	0	0	0	0	36	-	1	Space	
Space	-	1	37	0	0	0	0	38	-	1	Space	
Space	-	1	39	0	0	0	0	40	-	1	Space	
Space	-	1	41	0	0	0	0	42	-	1	Space	
Total Load per Phase per Side (VA)				11608	10608	7072	7072	Total Connected Load		152	A	
Total Load Phase A (VA)				19660	VA	* Existing circuit. Load not accounted for in feeder load		Total Connected Load + 25%		189	A	
Total Load Phase B (VA)				17680	VA			Spare 25%		47	A	
Total Connected Load (VA)				36360	VA	+ Confirm SPD breaker size with mfr.		Feeder Load		237	A	



- NOTES:**
- (A) LOCATE GROUND RODS CLEAR OF BUILDING IN A GRASS AREA WHERE RAIN WATER AND SPRINKLERS CAN KEEP THE SOIL MOIST. WHENEVER POSSIBLE, INSURE THAT AT LEAST 6 FT OF ROD IS EMBEDDED BELOW PERMANENT MOISTURE LEVEL.
 - (B) INSTALL (3) 3/4" D, 10 FT LONG GROUND RODS SPACED A MINIMUM OF 12 FT APART, MAXIMUM 25 FT
 - (C) THE METAL FRAME OF THE BUILDING SHALL BE BONDED TO THE GROUNDING ELECTRODE SYSTEM. SIZE BONDING JUMPER PER NEC 250-66.

1
E701 SCALE: NTS
GROUNDING SYSTEM DIAGRAM

PARKITECTURE + PLANNING
901 Deming Way, Suite 102
Madison, WI 53717
608.886.6808

ICONICA
901 DEMING WAY // MADISON, WI 53717
PH: 608.864.3500 // FX: 608.864.3535
iconicadecor.com

COMMUNITY PARK IMPROVEMENTS
HUGHETTE ROAD
RIDGEMAN, WI 53582

Project Name:
Sheet Title:
ELECTRICAL SCHEDULES AND DIAGRAMS

REVISIONS:

ISSUE	DESCRIPTION	DATE

Project #: 20235700
Issued For:
Date: 09/08/23

Sheet Number
E701