



Main Street/Blotz Court Intersection

No trees were removed from here but recommend planting:

Cluster of Redbuds nearer to end of the lot. MN Varietal, hardy. 20-30' T, 20-25' W



Shade Tree near the bench –

Norway Spruce

50' T 25' W

Cold hardy, but tolerates hotter southern climates as well (extends south of Tenn., Northern TX/AL/MS, fast growing



700 BLOCK MAIN ST. (1) Removed

Recommend Planting:



Greenspire Linden

40-50' T 30-35' W

Shade Tree, fragrant yellow flowers in June, yellow fall foliage

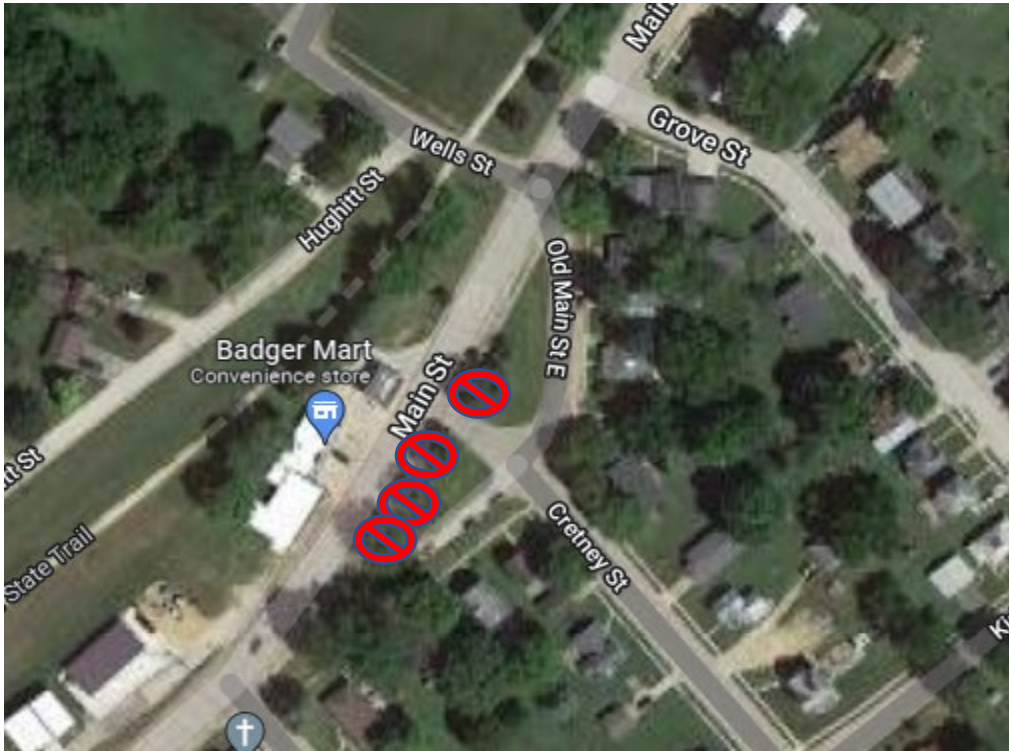
(would need to treat as a young tree if Japanese Beetles become a problem. \$35 would give you four treatments)

Pagoda Dogwood

15'-25'T (power lines) 20'-32' W

White flowers May/June, Berries and red flower stalks July





300 and 400 BLOCK MAIN ST. Removed 3 Ash and 1 Elm

Recommend planting:



Northern Pin Oak

40'-75' T 40'-70' W

Adaptable, hardy, native, slow-growing, red in fall



Witch Hazel

10-25' T 12' W

blooms Jan-March Yellow flowers.

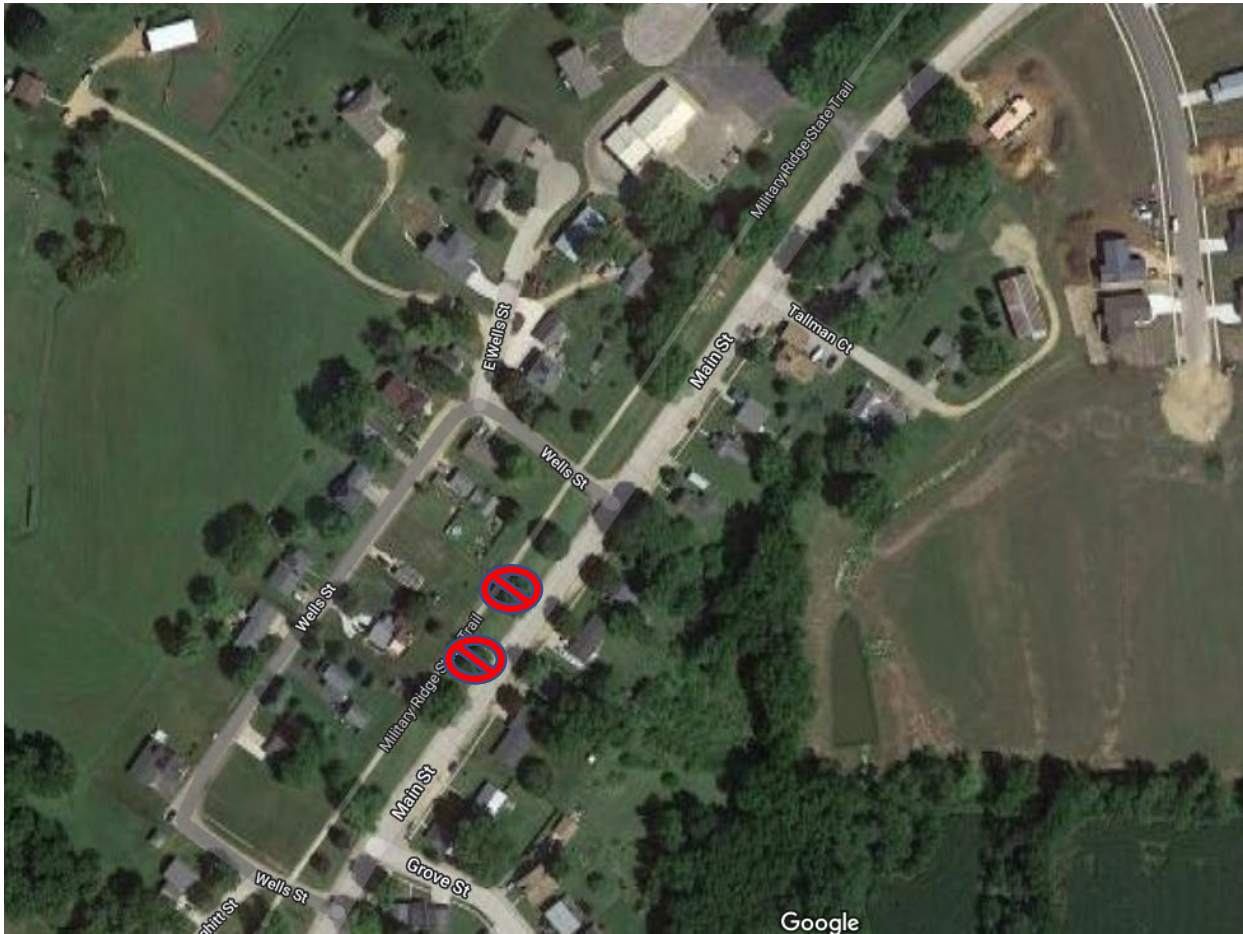
Acidic soil is preferred. Hardy, native, matures in a year.



Ginkgo

slow growing, symmetrical, handsome, golden yellow in fall, free of disease/pests

50' T 30' W



200 BLOCK MAIN ST. GREEN – removed 2 Ash

Recommend planting:



White Pine – fast growing
50-80' T 20-40' W

Valley Forge Elm
Disease resistant, slow
growing, yellow in fall
60'-80' T 60'W





PARK/HUGHITT ST. – removed 1 multi trunk Black Cherry along drive, 1 maple, 1 Ash

Recommend planting:

Shade trees near playground:



Sunburst Honeylocust

Adaptable, hardy, pest/disease free, filtered shade, small leaves disappear into grass, striking yellow foliage in fall

30'-70' T, 30-70' W



Bur Oak

Slow grower, 70-80' T, 80' W

Along Hughitt Street:



Japanese Tree Lilac

Doesn't spread/sucker, canopy is up, perfect for street/sidewalks, fragrant white blooms in spring,

20'-25' T, 15-20' W



600 BLOCK MAIN ST. GREEN - 1 Ash Removed

Recommended planting:



Star Magnolia Tree

Adaptable, slightly acidic soils, medium to fast growing, showy white fragrant flowers in spring, grows in oval/pyramidal shape

15'-20' T, 10'-15'

There is also 1 black cherry tree and 2 boxelder trees on Meudt court/cemetery that were removed and stumps grinded. Ternes court 1 oak tree was removed and stump grinded. These are not included in the

packet. There is another large courtyard between the road that use to go to 18/151 and the trail. This area is a bus stop. A Ginkgo or Linden would also be good here.

Budgeted \$25,000 for Tree Removal

Spent \$12,800

Available: \$12,200

Recommended Planting Cost: (all #10 Size Trees about 5-8' tall, any bigger and they don't grow/adapt as well)

Redbuds – 3	\$525
Norway Spruce	\$250
Linden	\$200
Dogwood	\$200
Pin Oak	\$250
Witch Hazel (2-3)	\$325
White Pine	\$200
Elm	\$200
Honeylocust	\$200
Bur Oak	\$250
Ginkgo	\$200
Jap Tree Lilac (3-4)	\$700
Star Magnolia	\$170

Total: \$3,670 (does not include trees in Ternes Court Bus Stop)

All indicated varieties can be obtained from Aspen Ridge in Mineral Point. They indicated they would work with us and offer an Arbor Day Discount of 15%. We would need to pick them up from Mineral Point.

Aaron Miller offered to dig the holes with a machine he could borrow

Everything but the shrubs should be staked:



\$13 plus the fence post – extra \$18 tree (10 trees above = \$180)

Total Estimated Cost = \$3,850

With planting and maintenance by Public Works