



Main Street/Blotz Court Intersection

No trees were removed from here but recommend planting:

Cluster of Redbuds nearer to end of the lot. MN Varietal, hardy. 20-30' T, 20-25' W



Shade Tree 25' from the bench –

Norway Spruce

50' T 25' W

Cold hardy, but tolerates hotter southern climates as well (extends south of Tenn., Northern TX/AL/MS, fast growing



700 BLOCK MAIN ST. (1) Removed

Recommend Planting:



Greenspire Linden

40-50' T 30-35' W

Shade Tree, fragrant yellow flowers in June, yellow fall foliage

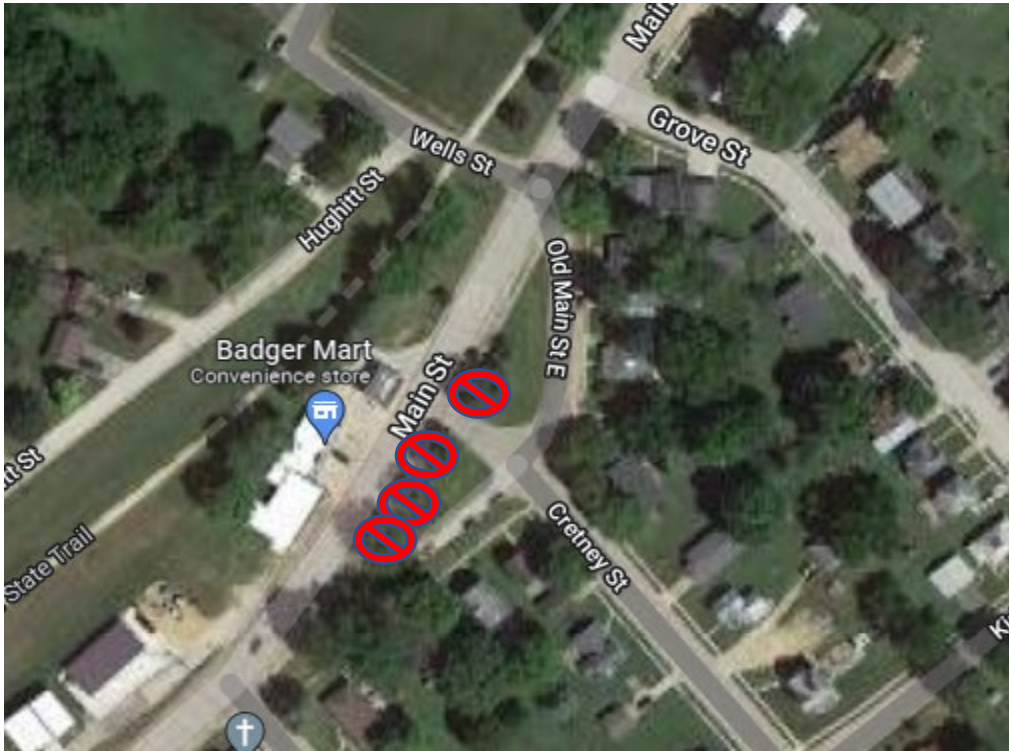
(would need to treat as a young tree if Japanese Beetles become a problem. \$35 would give you four treatments)

MN Redbuds nearer to end of the lot.

MN Varietal, hardy. 20-30' T, 20-25' W

Power lines run on the east side of this triangle and snow is piled here





300 and 400 BLOCK MAIN ST. Removed 3 Ash and 1 Elm

Recommend planting:

Across from Badgermart:



One: Ginkgo (nurseries typically only sell males, Aspen Ridge only carries males, the females have a foul odor in bloom)

slow growing, symmetrical, handsome, golden yellow in fall, free of disease/pests

50'

Another fast growing variety?

Possibly a larger tree? How will it get here? How much? How will it be planted? Is it hardy enough to acclimate and start growing right away?

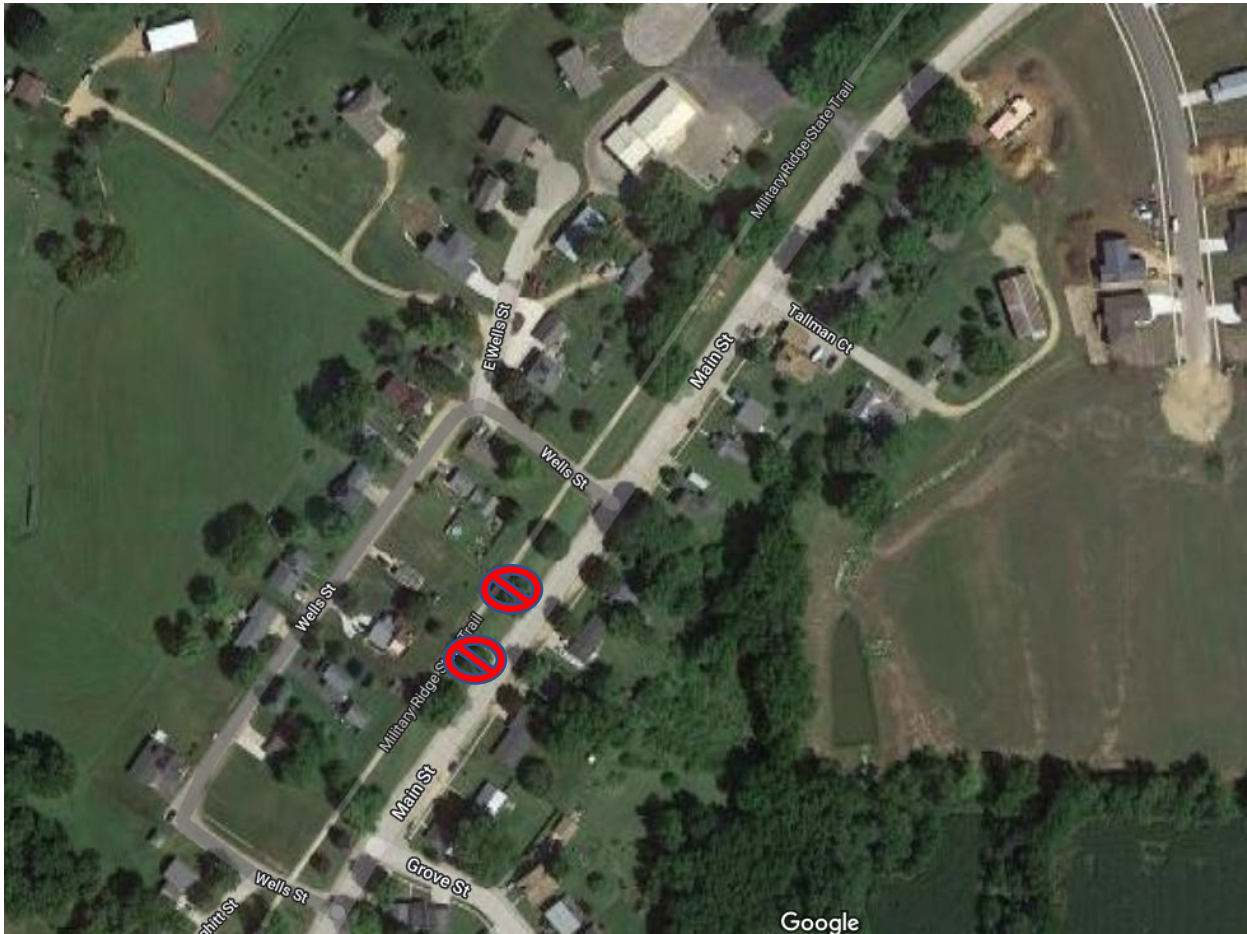
Old Main Street East Triangle:



Japanese Tree Lilac

Doesn't spread/sucker, canopy is up, perfect for street/sidewalks, fragrant white blooms in spring, shorter for under the power lines

20'-25' T, 15-20' W



200 BLOCK MAIN ST. GREEN – removed 2 Ash

Recommend planting:



Northern Pin Oak

40'-75' T 40'-70' W

Adaptable, hardy, native,
medium-growing, red in fall

Valley Forge Elm

Disease resistant, slow growing, yellow in fall

60'-80' T 60'W





PARK/HUGHITT ST. – removed 1 multi trunk Black Cherry along drive, 1 maple, 1 Ash

Recommend planting:

Shade trees near playground:



Sunburst Honeylocust

Adaptable, hardy, pest/disease free, filtered shade, small leaves disappear into grass, striking yellow foliage in fall

30'-70' T, 30-70' W

Pruning Recommendations:

Mature honey locust trees need little pruning except to remove dead or diseased branches, but until they are mature, you should prune them every five years or so to shape them as desired. This typically means keeping the canopy relatively open and airy. Branches that cross and rub can be susceptible to developing canker, which can

spread and kill a tree. The best time to prune is in late spring to fall when sap flow has lessened somewhat.



Bur Oak

Slow grower, 70-80' T, 80' W

Along Hughitt Street:



Japanese Tree Lilac

Doesn't spread/sucker, canopy is up, perfect for street/sidewalks, fragrant white blooms in spring,

20'-25' T, 15-20' W



600 BLOCK MAIN ST. GREEN - 1 Ash Removed

Recommended planting:



Star Magnolia Tree

Adaptable, slightly acidic soils, medium to fast growing, showy white fragrant flowers in spring, grows in oval/pyramidal shape

15'-20' T, 10'-15'

Meudt court/cemetery - 1 black cherry tree and 2 boxelder trees that were removed and stumps grinded.

Ternes Court - 1 oak tree was removed and stump grinded. There is a large courtyard between the road that use to go to 18/151 and the trail. This area is a bus stop. A Ginkgo, Linden, Pin Oak, or Maple would also be good here.

Budgeted \$25,000 for Tree Removal

Spent \$12,800

Available: \$12,200

Recommended Planting (APPROXIMATE) Cost:

(all #10 Size Trees about 5-8' tall, **any bigger and they don't grow/adapt as well**)

Redbuds – 5	\$875
Norway Spruce	\$250
Linden	\$200
Dogwood	\$200
Pin Oak	\$250
White Pine	\$100
Elm	\$200
Honeylocust	\$200
Bur Oak	\$250
Ginkgo	\$200
Jap Tree Lilac (7) – More for Main Street?	\$1,225
Star Magnolia	\$170
Ternes Court Tree?	

Estimated Total for planting as presented: \$4,120 (does not include trees in Ternes Court Courtyard area)

All indicated varietals can be obtained from Aspen Ridge in Mineral Point. They indicated they would work with us and offer an Arbor Day Discount of 15%. We would need to pick them up from Mineral Point.

Aaron Miller offered to dig the holes with a machine he could borrow (auger)

Everything but the shrubs recommended to be staked in high winds for the first couple growing seasons:

\$13 plus the fence post – extra \$18 tree (10 trees above = \$180)

Watering Bags:

[12 Pack 20 Gallon Tree Watering Bags](#): \$129.99

[Gemplers Tree Watering Bag, 12PK](#): \$247.99

[Tree Watering Bag, Polypropylene, 20 Gal.](#): \$16.39

[TreeGator Jr.](#): \$19.95

[DeWitt Donut Tree Watering Bag](#): \$16.99

With planting and maintenance by Public Works

*RECOMMENDED TO **WATER WEEKLY** FOR FIRST YEAR! **EVERGREENS** SHOULD BE WATERED UNTIL THE GROUND IS FROZEN SOLID AND CANNOT ABSORB ANY WATER*