

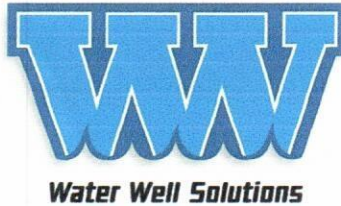
WELL # 1 REHAB PROPOSALS

	PEERLESS	WATER WELL SOULUTIONS
PULL/INSPECT :	\$3650	\$7555
NEW PUMP:	\$4580	\$2850
Or refurbished (peerless)		
Total:	\$8250	\$10405
COMPLETE REPLACEMENT: called for quote		\$21,965
REPLUMBING: (old piping, valves, meters)		
	\$25900	called for quote
TELEVISIONING : (OPTIONAL)	\$1500	\$1450 before and after

WELL # 2 METER REPLACEMENT

METER SUPPLIED BY MIDWEST METERS INC. \$3545.00

	PEERLESS	WATER WELL SOULUTIONS
INSTALL :	TIME AND MATERIAL	\$650



April 26, 2022

Village of Ridgeway
Ridgeway, WI
Attn: Jeff Brindley, DPW

RE: Well Pump Maintenance Well No. 1

Jeff,

Water Well Solutions is pleased to provide the following proposal for the removal, inspection, and repair of the pump at Municipal Well # 1. Upon removal a detailed inspection will be performed and a secondary proposal detailing recommended repairs will be provided for your review / approval.

Procedures:

1. Load materials, mobilize to jobsite and set up pump service crane.
2. Perform brief well / pump test to determine present condition of well / pump.
3. Disassemble electrical supply and discharge piping connection
4. Cut hole into steel roof to allow removal of pumping assembly
5. Remove pump unit complete
6. Chlorinate well per code requirements and install new pump unit complete
7. Pump well to waste and collect the first of two bacti samples (minimum 8 hours apart) Village to collect 2nd sample to help keep costs to a minimum.
8. Install new mag meter at Well 2
9. Collect final pumping data and provide copies to owner and WDNR if required.

Est. 20 – 25hrs. @ 265.00/hr	\$5,300.00 - \$6,625.00
Est 1 day rig time @ \$650/day	\$650.00
Est. 1 day per diem per 2/person crew	\$280

Repair costs – assuming all new components:

- | | |
|---|------------|
| • 2ea. -255ft airlines | \$325.00 |
| • Electrical splice kit | \$150.00 |
| • Chlorine, silicone, tape, dope, samples | \$150.00 |
| • New submersible pump (based on well log) | \$2,850.00 |
| • New Franklin 4” sub motor- 230V, 3-phase, 3450rpm | \$1,845.00 |
| • 3” Schedule 40 T&C column pipe (255ft max) | \$28.00/ft |
| • 3” in-line check valves (est 2 @ \$510.00 ea) | \$1,020.00 |
| • #8/3 Flat jacketed pump cable w/gnd | \$930.00 |



In addition to the Well 1 service, you also requested pricing to remove turbine meter at Well 2 and install new 6" mag-meter (purchased direct by owner). The lay length of the new meter is shorter than the existing turbine so a short 6" spool would need to be installed to make up the difference. Our scope would be to remove old meter, install new meter and spool **including** all new nuts, bolts and gaskets. Electrical connection by others.

Well 2 Mag Meter Installation (materials) \$650.00
Labor is included in pump replace quote above

Note – Pump model and design capacity will be confirmed upon removal from Well 1. if design varies from quoted pump above, a revised pump / motor price will be provided.

If this proposal is acceptable to the village, please contact us with your approval and we will schedule the work asap. We are currently 2-3 weeks out but we always respond to emergencies immediately. This price is good for 10 days. After 10 days we can check pricing to be sure it is still accurate.

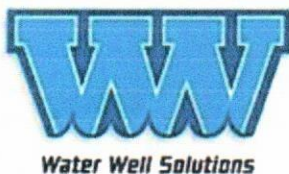
As always, this proposal assumes clear and easy access to the Wellhouse and clear path to set up and remove pump / service well. If you have any questions or wish to discuss in further detail, please don't hesitate to contact me at your convenience.

Sincerely,

Peter Bennin

Peter Bennin
Senior Project Manager

N87W36051 Mapleton Street, Oconomowoc, WI 53066
Cell: (262) 269-8755 | Office: (920) 474-4777 | Fax: (920) 474-4771
Email: peter.bennin@wwsg.com | Web: www.wwsg.com



I've attached some literature...just in case you need it. Lay lengths and additional spool or "make up" pieces may have to be considered/ordered - but here is the price for each of the meters:

4" M2000, meter-mounted amplifier, hard rubber liner, grounding rings: \$2,875.00 each

6" M2000, meter-mounted amplifier, hard rubber liner, grounding rings: \$3,545.00 each

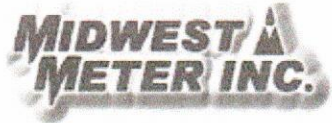
These prices are for meters that are not in pits or vaults (so no submerging in water). There is also an option to remote-mount the display/electronics, if needed.

Please let me know if you have any questions about this Jeff. Once you get approval and have the exact lay length for each meter, we can get prices on any other items needed.

Thank you!

Steve

Steve Dauster
Midwest Meter, Inc.
N173 W21290 Northwest Passage Way
Jackson, WI 53037
(262) 677-2887 Office
(262) 416-2889 Cell



From: Jeff Brindley <ridgewaypwd@mhtc.net>
Sent: Monday, March 7, 2022 10:05 AM
To: Steve Dauster <sdauster@midwest-meter.com>
Subject: Mag Meters

Hi Steve,
Could you send me a guestimate on (2) 4" mag meters and (1) 6" for our Well houses. The meters will have to be modified on our behalf on installation. Just looking for some numbers to show the board tomorrow nights meeting.

Thanks

Jeff

Jeff Brindley
Directory of Public Works
Village of Ridgeway
608-669-0977



October 5, 2021

Village of Ridgeway
Attn: Jeff Brindley
208 Jarvis St. Suite A
Ridgeway WI, 53582

Re: Well #1 Pump pull/reinstall

Jeff,

Peerless Well and pump would like to thank you for the opportunity to submit a proposal on the pull and inspection of the pumping equipment at Well #1.

From our conversation and what limited information I found on the direct read gauge; we determined the pump setting is 235-ft of 4-in column pipe. The below price for the labor to pull/inspect and reinstall the pump assembly was determined by the above information. If it is found that the pump assembly is a different size or different depth some adjustment may be necessary, if extra labor is necessary.

Please see the below scope of work:

- Mobilize a two-man pump service crew with pump rig and service truck to Well #1. Set up rig. Disconnect leads and pull 235-ft of 4-in submersible pump assembly. Load equipment and clean up. Demobilize back to shop. Inspect pump assembly and provide Ridgeway a written report documenting findings and recommendations of repairs with costs associated with those repairs.
Pull and inspect pump assembly: \$ 3,650.00
- Mobilize to Ridgeway with new or refurbished 4-in x 235-ft pump assembly. Set up and install pump assembly and set discharge head. Flush to waste, put back online and demobilize.
Reinstall, flush to waste, and put back online: \$ 4,580.00
 - Pricing does not include sampling (assumed to be done by village)

After reviewing the above proposal should you have any questions or concerns, or if there is any other way we can be of assistance to your community, please feel free to contact me at your convenience. We appreciate this opportunity to provide you with this proposal and look forward to the opportunity to deliver the Village of Ridgeway expert service on this project.

Peerless Well & Pump

Ross Griffin

Ross Griffin
563-543-5803