



Richwood VFD

Organization



Chief:

Clint Kocurek

clint.kocurek@richwoodfiretx.org



Asst Chief:

Mark Guthrie

mark.guthrie@richwoodfiretx.org

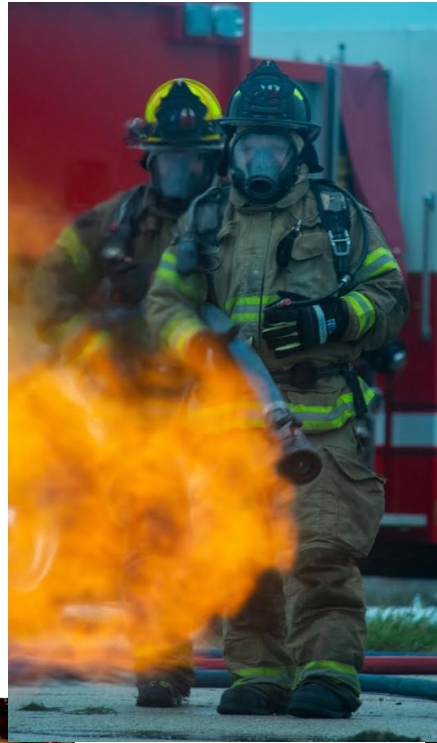
Members

10 Member

- 9 full qualified interior firefighter
- Total of ~125 years of experience ranging from 1 to 35 years.

Training

- Approximately 100 hours to become a basic firefighter
- Specialized training include rescue, pump operations, command training, plus all the subject specific such as elect cars and other special hazards.
- Monthly department training to ensure our skills are sharp
- Most of the training except department training is completed through schools at A&M.
- Training is paid for by the department and grants when possible, however the member has to donate the time.



Selflessly Serving our Community!

Volunteers

Members respond as available 24/7 - no shifts or rotating companies

- Middle of the night/day
- During meals residence/restaurant
- During family get togethers
- Holidays
- During inclement weather hot/cold/rain
- Family sacrifices

Members train on their time

- Time away from family
- Vacation to attend schools
- Nights and weekends

Choose to work extremely hard in hazardous conditions

- Dangerous & life threatening
- Extreme work conditions with lots of PPE and equipment
- Working with heavy and dangerous tools/equipment
- Many risks with hazardous environments

Health and Injuries

- Injuries - falls, impact, crushing, exposure, and exertion.
- Chronic - exposures, cancers, and PTSD
- Leading on-duty cause of death is heart attack

Fire Service Facts

- 65% of the nations firefighters are volunteers (676,000)
- 1984 to 2020
 - 25% less firefighters
 - 200% more calls
- Why the Degrees in Volunteers
 - Time Demands
 - Training Requirements
 - Call Volumes
 - Nature of the Business
 - Abuse from Public
 - Less emphasis on social aspects of volunteering
- Sociological
 - Less community pride
 - “ME” generation
- Higher cost of living, volunteers cannot afford to live in the community they serve

Event Hours

Administrative - hours that account for non-operational work, such as reports and meetings outside the department. Monthly County Chief's meetings.

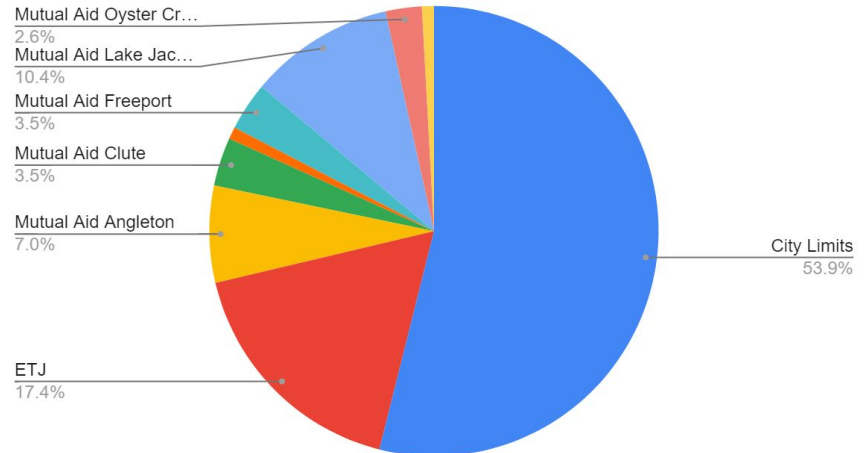
Emergency Calls - Time to perform emergency calls, public and agency assistance calls.

Maintenance - perform for upkeep and repair (estimation of January through July).

Training - both in-house and away at schools.

Event Type	Total Hours
Administrative	17
Emergency Call	852
Meeting	174
PR Event	6
Station / Vehicle Maintenance	200
Training	475
Grand Total	1724

Area of Incident



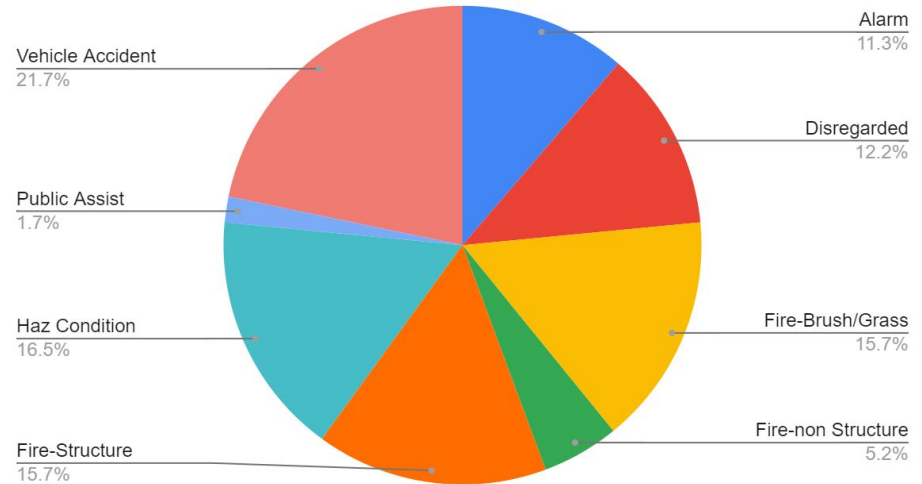
Event Types

Event Types (January 1, 2023 to October 28, 2023)

116 calls

- Fire
 - Structure - involves building
 - Non Structure - Contents, vehicles, or Equipment
 - Brush or Grass
- Vehicle Accidents - Traffic Control, Patient Extrication, Assist EMS with Patient Care
- Alarms - majority are false or good intentions. All alarms are treated as emergencies until verified to be false
- Hazardous Conditions - Gas leaks, power lines down, traffic control, or Smoke or odor removal.
- Public assistance - Animal/Snake removals, alarm assistance. Assisted a ranger with water for his cows during the drought (he paid for the water)
- Disregard - department canceled by PD, mutual aid request canceled when assists was determined to be not needed

Events Types



How we are funded

- City Budget
 - Annual operating budget

- Donations & County Funds
 - Water Bill Donations (\$1.50 per month)
 - County ETJ Coverage (strictly for county calls)
 - Misc. Donations/Fundraising

- Texas Forestry Service Grants - Not guaranteed and larger purchases are awarded many years apart if previously approved.
 - Training - Most is 100% Reimbursable
 - Equipment - Holmatro Rescue Tools (Jaws)
 - PPE - Bunker Gear and Wildland Gear
 - Tanker/Pumper - Engine 2



Engine 1

2017 Spartan Custom Pumper

- Equip for all Fire Fighting operations City and Rural
 - Scba's and Spare Bottles
 - Saws and other forcible entry tools
- Setup for Rescue
 - Rescue tools for extrications
 - Holmatro Hydraulic tools
 - Hydraulic Ram
 - Hydraulic Spreader
 - Hydraulic Cutter
 - Stabilization Struts
 - Cribbing and stabilization blocking
- AED/ Trauma Kit



- Funded by Donations and County Funds - Payoff in year 2033
 - Original Cost - \$493,354
 - Volunteer Department down payment (non city funds) - \$90,000
 - Annual Payment (City Budget) - \$32,712

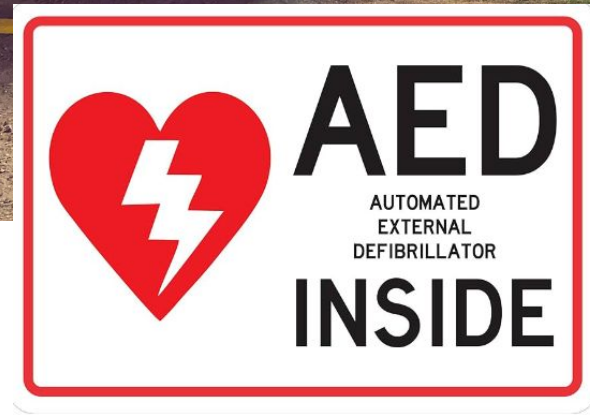


Engine 2

2008 Spartan Custom Pumper

- Equipped for all Fire Fighting operations City and Rural
 - Scba's and Spare Bottles
 - Saws and other forcible entry tools
- Equipped for advanced rural operations
 - Specialized Drafting and water distribution equipment.
- AED/ Trauma Kit

- Funded by Donations and County Funds - Paid Off
 - Original Cost - \$348,000
 - Grant (Texas Forestry Service) - \$108,000
 - Volunteer Department (non city funds) - \$240,000



Tanker 1

- Equipped for delivering water to areas where there is no municipal water supply.
 - Can also be used for fire fighting operations in a pumper capacity
 - 2017 - 2200 gallon Spartan Tanker / Pumper
-
- Funded by Donations and County Funds - Payoff in year 2033
 - Original Cost - \$275,600
 - Volunteer Department down payment (non city funds) - \$64,000
 - Annual payment (non city funds) - \$18,200



Brush 1

2011 Ford F550 (modified)

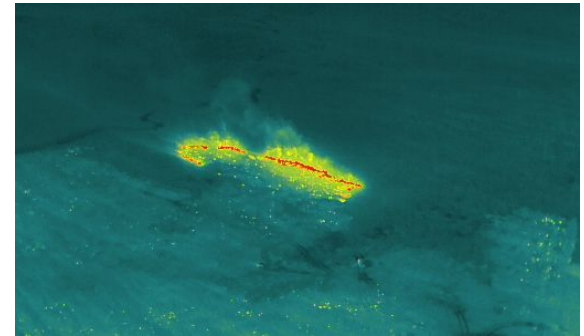
- Apparatus Uses
 - Wildland or off road non-wildland
 - Mini pumper for small fires with limited access
 - Highwater rescue
- Equipped with a Metro Fire removable fire fighting skid which includes
 - 350 gallon water tank
 - 250 GPM pump and associated piping for pushing water and pulling water from a natural source (bayou)
 - Miscellaneous tools and equipment
- Funded by Donations and County Funds - Paid Off
 - Original Cost - \$95,000
 - Volunteer Department down payment (non city funds) - \$95,000
 - Bed and Skid Rebuild (city funds 2020) - \$45,000
 - Bed and Skid Rebuild (volunteer non city) - \$20,000



Drone Capabilities

Many potential uses

- Day or night search capabilities and includes infrared night imaging
- Scene overhead view for large and moving situations
- Remote view for safe observations or large hazardous situations
- Scene investigation
- Verification of total extinguishment



Coverage Area

- 13.7 sq miles of City and ETJ areas adjacent to the City
 - North on old Angleton road just past the trailer parks on the left
 - North on Business 288 to CR 640 just north of the 3rd bridge at Bastrop Bayou
 - North east on 2004 to Bastrop Bayou
 - West side of the FM 523 between Bastrop Bayou and CR 223
 - Incorporated areas north of oyster creek between east of Old Angleton Rd and Business 288

