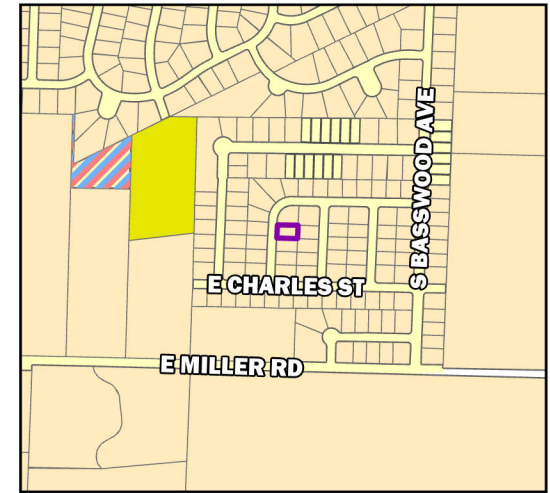
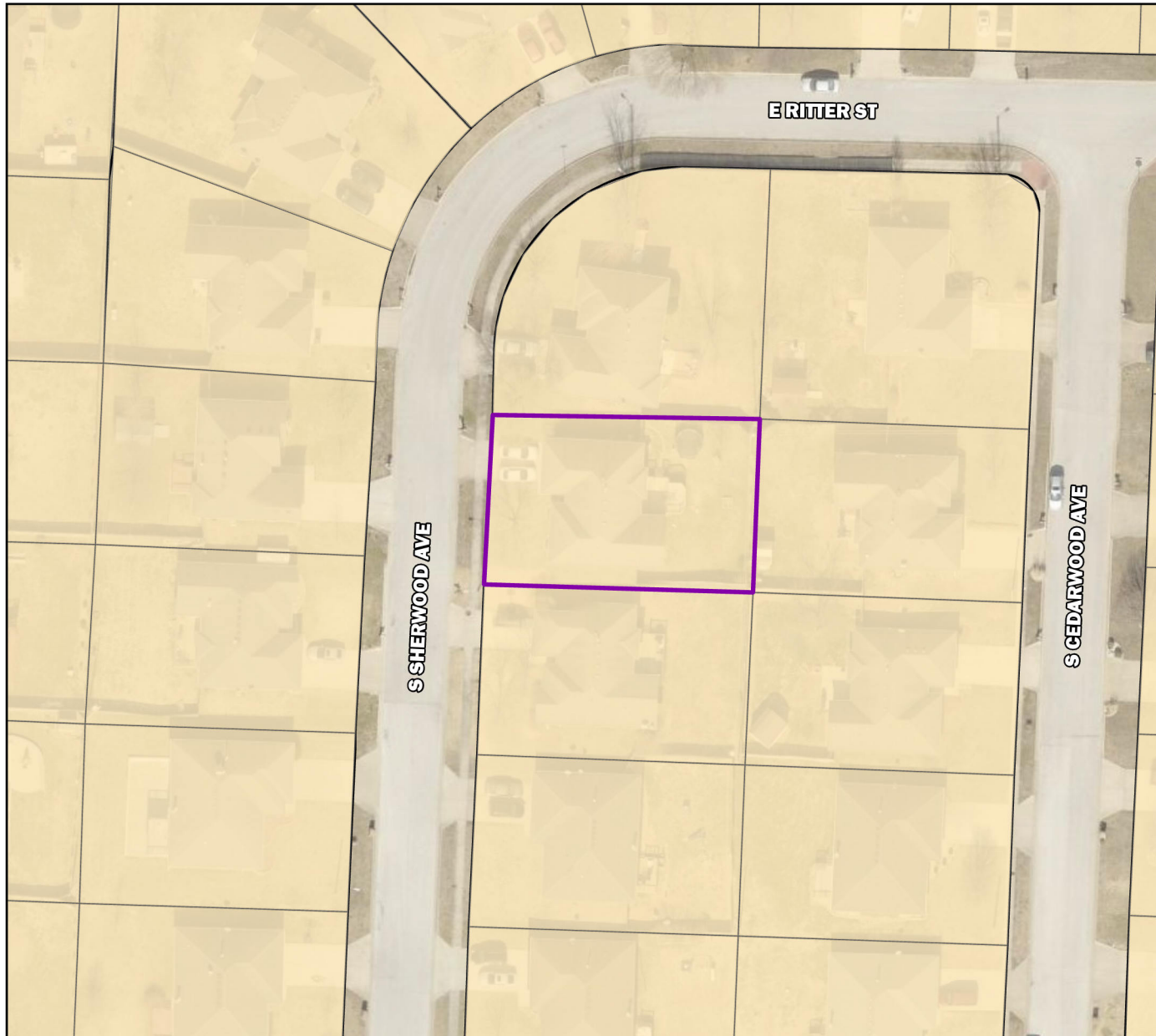


SU 20-001: 432 South Sherwood Avenue

Future Land Use Map



Legend

- Parcels
- SU 20-001
- Republic City Limits
- Future Land Use
 - Low Density Residential
 - High Density Residential
 - Med Density Residential
 - Main Street District
 - C-1
 - C-2
 - M-1
 - M-2
 - Park
 - Planned Business Park
 - Public Land Use
 - School Land Use

Parcel Owner: Justin Sierk
Parcel Address: 432 S Sherwood Ave
Area: 0.18 Acres
Requested Use: Group Home Day Care
Zoning: High Density Single Family Residential (R1-H)

