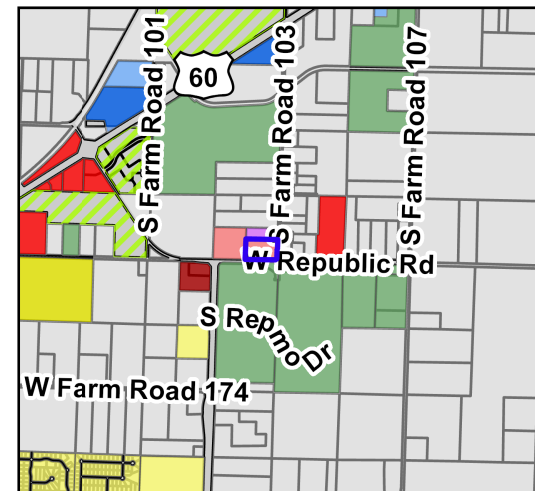
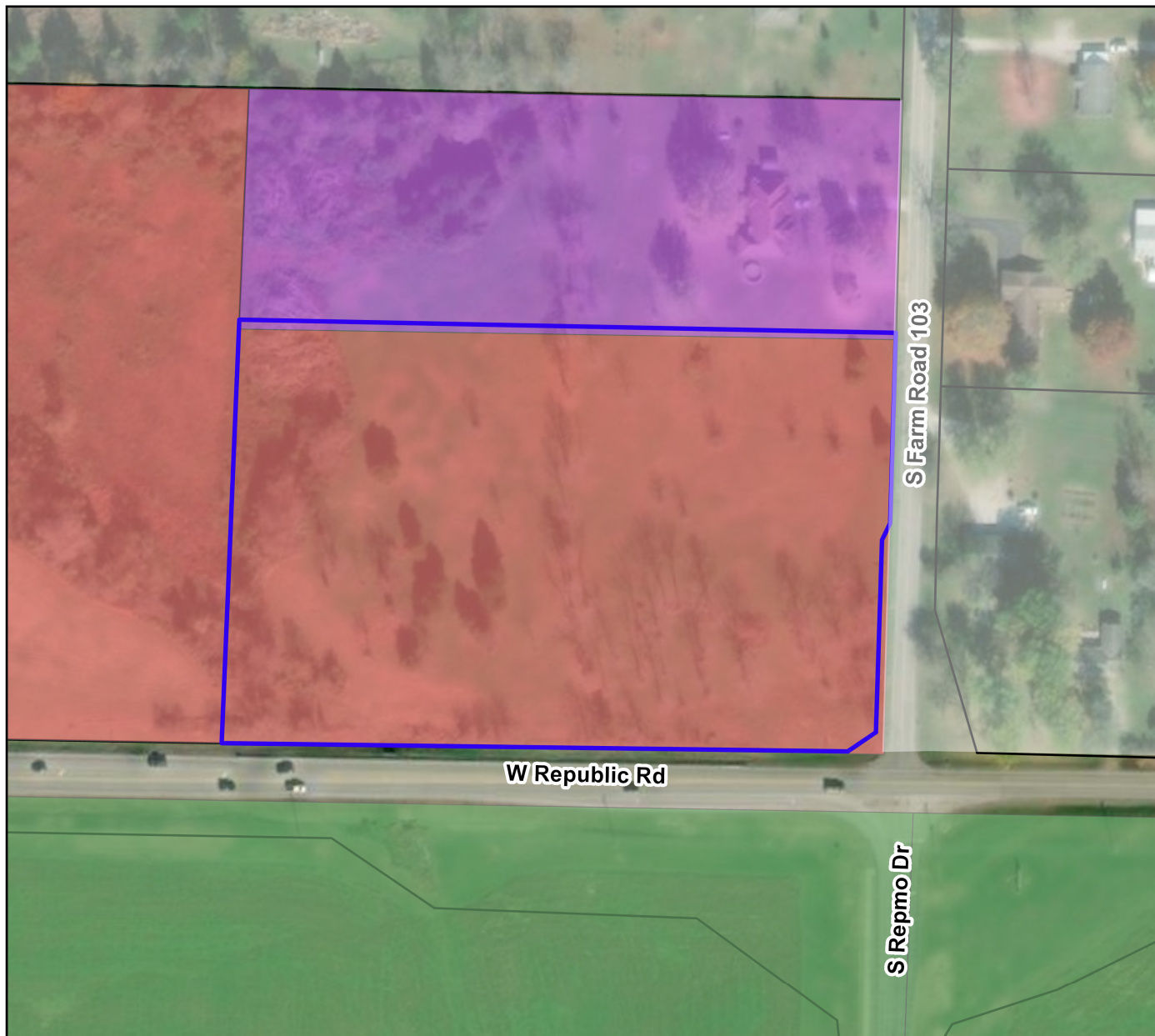


REZN 22-005: 4100 Block S FR 103

Zoning Map



Legend

- Solarplex
- Parcels
- Zoning**
- AG Agricultural
- C-1 Commercial
- C-2 General Commercial
- C-3 General Commercial
- M-1 Light Manufacturing
- M-2 Heavy Manufacturing
- PDD Planned Development
- R1-L Single Family Low Density
- R1-M Single Family Medium Density
- R1-H Single Family High Density
- R1-Z Zero Lot Line Residential
- R-2 Two-family Residential
- R-3 Multi-family Residential

Parcel Owner: Solarplex LLC
Parcel Address: 4100 Block of South Farm Road 103
Area: 6.02 Acres
Existing Zoning: Local Commercial (C-1)
Requested Zoning: General Commercial (C-2)

