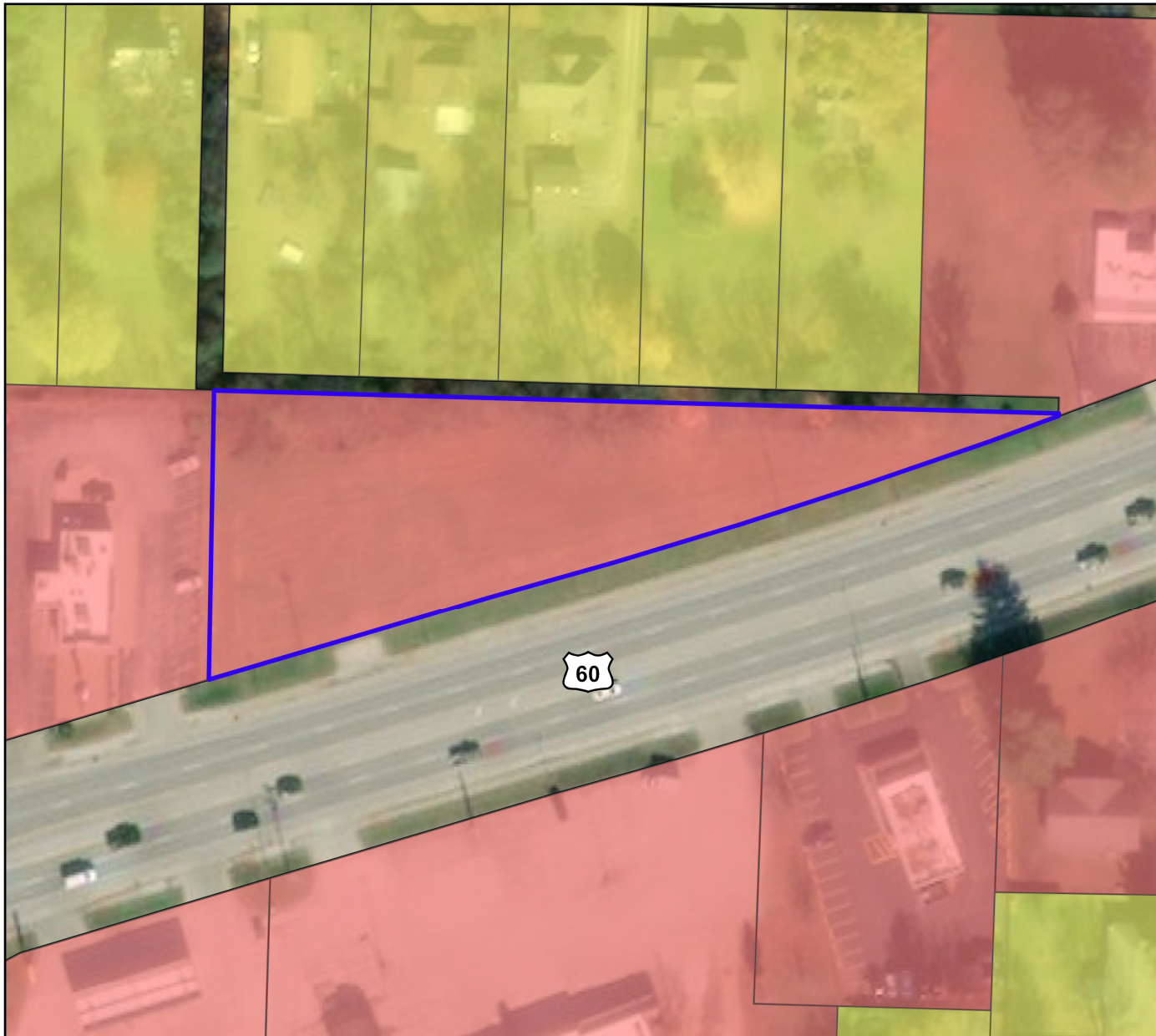
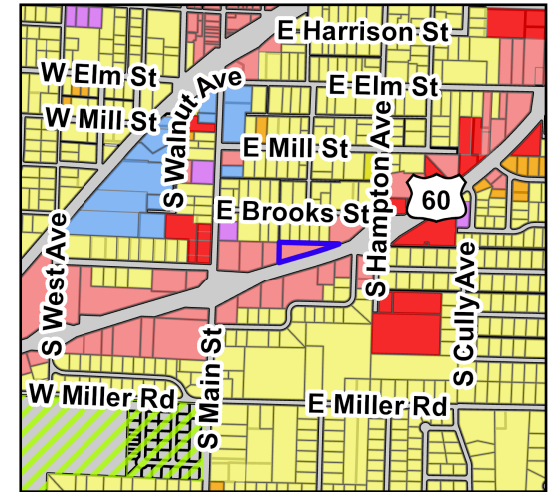
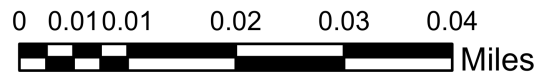


# REZN 22-001: 221 US Hwy 60

## Zoning Map



Parcel Owner: Looney Family Trust  
Parcel Address: 221 E US Hwy 60  
Area: 0.94 Acres  
Existing Zoning: Local Commercial (C-1)  
Requested Zoning: General Commercial (C-2)



### Legend

221 E US Hwy 60

Parcels

### Zoning

AG Agricultural

C-1 Commercial

C-2 General Commercial

C-3 General Commercial

M-1 Light Manufacturing

M-2 Heavy Manufacturing

PDD Planned Development

R1-L Single Family Low Density

R1-M Single Family Medium Density

R1-H Single Family High Density

R1-Z Zero Lot Line Residential

R-2 Two-family Residential

R-3 Multi-family Residential

