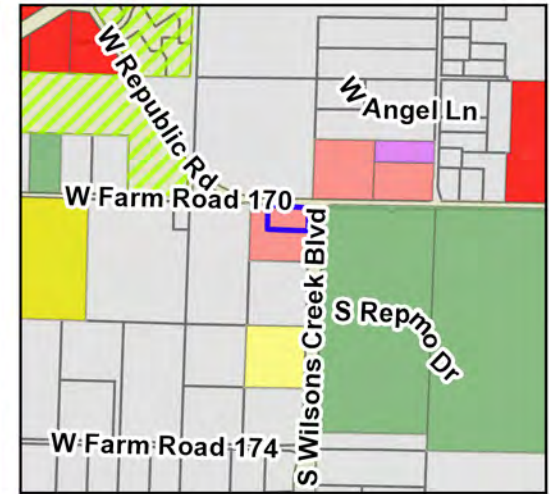
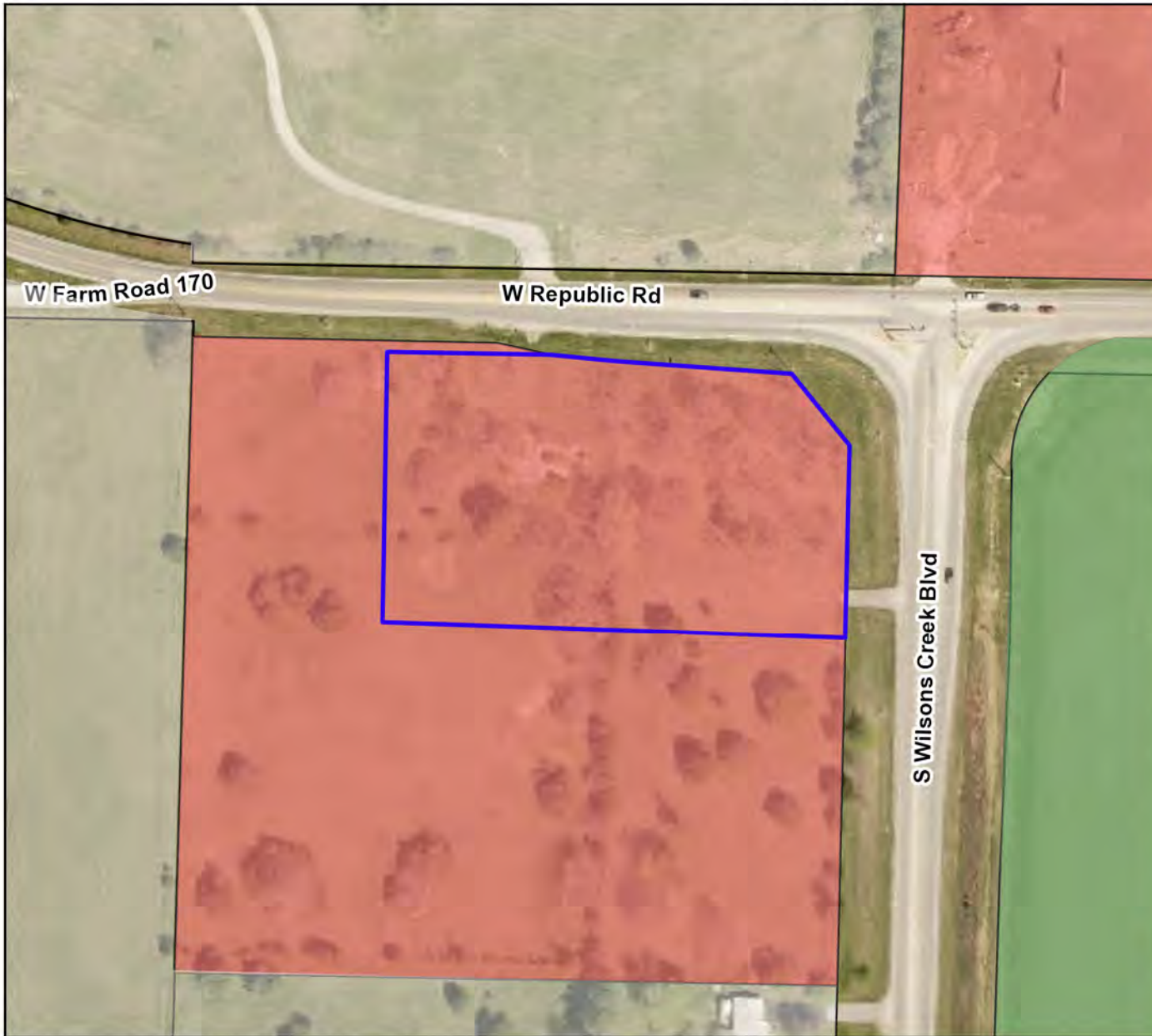


# REZN 21-010: City of Republic

## Zoning Map



### Legend

REZN 21-010

Parcels

### Zoning

AG Agricultural

C-1 Commercial

C-2 General Commercial

C-3 General Commercial

M-1 Light Manufacturing

M-2 Heavy Manufacturing

PDD Planned Development

R1-L Single Family Low Density

R1-M Single Family Medium Density

R1-H Single Family High Density

R1-Z Zero Lot Line Residential

R-2 Two-family Residential

R-3 Multi-family Residential

Parcel Owner: City of Republic  
 Parcel Address: 6552 West Farm Road 174  
 Area: 2.5 Acres  
 Existing Zoning: Local Commercial (C-1)  
 Requested Zoning: General Commercial (C-3)

