

Exhibit "A"

Sanitary Sewer Easement Relinquishment

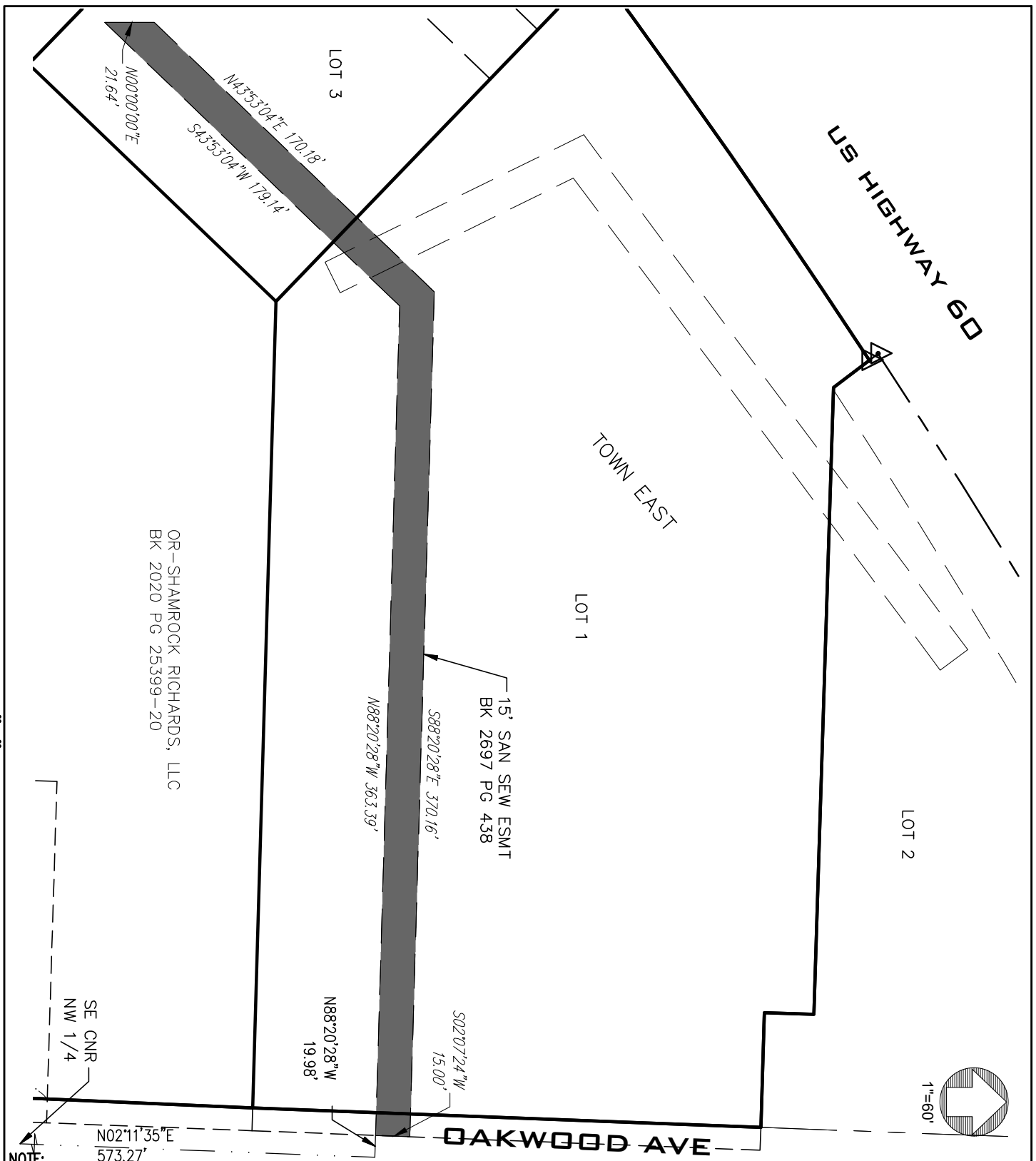
Permanent Sanitary Sewer Easement

COMMENCING at an existing iron pin at the Southeast corner of the Northwest Quarter of Section 16, Township 28 North, Range 23 West;

thence, N 02°11'35" E, along the East line of said Northwest Quarter, a distance of 573.27 feet';  
thence, N 88°20'28" W, 19.98 feet to a point on the South line of the Grantors property and the  
POINT OF BEGINNING;

thence, continuing along said South line, N 88°20'28" W, 363.51 feet; thence, continuing along said  
South line, S 43°53'04" W, 179.14 feet; thence, N 00°00'00" E, 21.64 feet; thence, N 43°53'04" W,  
170.18 feet; thence, S 88°20'28" E, 370.16 feet to the East line of the Grantors property; thence,  
along said East line, S 02°07'24" W, 15.00 feet to the POINT OF BEGINNING.

Containing 0.19 Acres. (More or less)



**NOTE:** THIS DRAWING HAS BEEN PREPARED ONLY AS AN EXHIBIT TO ILLUSTRATE NEW EASEMENTS TO BE DEDICATED BY RECORDED INSTRUMENTS AND IS NOT TO BE CONSTRUED TO REPRESENT A PROPERTY BOUNDARY SURVEY.



LEE Engineering & Associates, L.L.C.  
 1200 E. Woodhurst Dr., Suite D200  
 Springfield, Missouri 65804  
 417-886-9100 (phone)  
 417-886-9336 (fax)  
 dlee@leeengineering.biz

*"Engineering with Integrity"*

Missouri State Certificate of Authority  
 Engineering #2009016504  
 Land Surveying #2009028050

**SANITARY SEWER  
 EASEMENT  
 RELINQUISHMENT  
 EXHIBIT**

DATE:

12/20/24

PROJECT NO.:

2424