

EXHIBIT "A"

GRANTOR(S): CITY OF REPUBLIC MO,  
GRANTEE: CITY OF REPUBLIC MO,

VACATING A PORTION OF A UTILITY EASEMENT RECORDED IN BOOK 2051, PAGE 1801. PORTION BEING VACATED DESCRIBED AS FOLLOWS:

LOCATED IN THE SOUTHEAST QUARTER OF THE SOUTHEAST QUARTER SECTION 34, TOWNSHIP 29 NORTH, RANGE 23 WEST GREENE COUNTY, MISSOURI;  
**COMMENCING** AT THE SOUTHEAST CORNER OF SAID SECTION 34, TOWNSHIP 29 NORTH, RANGE 23 WEST SITUATED IN THE CITY OF REPUBLIC, GREENE COUNTY, MISSOURI; **THENCE** N88°13'40"W ALONG THE SOUTH LINE OF QUARTER SECTION 34, A DISTANCE OF 1230.43 FEET; **THENCE** N01°37'31"E A DISTANCE OF 16.70 FEET TO A POINT ON THE APPEARENT NORTH RIGHT-OF-WAY LINE OF FARM ROAD NO 156; **FOR A POINT OF BEGINNING**; **THENCE** N87°53'37"W ALONG SAID LINE A DISTANCE OF 25.00 FEET; **THENCE** N01°37'31"E A DISTANCE OF 181.36 FEET; **THENCE** N90°00'00"E A DISTANCE OF 18.00 FEET; **THENCE** N00°00'00"W A DISTANCE OF 48.87 FEET; **THENCE** S79°19'31"W A DISTANCE OF 25.59 FEET TO A POINT ON GRANTORS WEST LINE; **THENCE** ALONG SAID WEST LINE N01°45'58"E A DISTANCE OF 15.36 FEET; **THENCE** LEAVING SAID WEST LINE N79°19'31"E A DISTANCE OF 40.37 FEET; **THENCE** S00°00'00"E A DISTANCE OF 66.96 FEET; **THENCE** N90°00'00"E A DISTANCE OF 42.00 FEET; **THENCE** S00°00'00"E A DISTANCE OF 50.00 FEET; **THENCE** N90°00'00"W A DISTANCE OF 51.41 FEET; **THENCE** S01°37'31"W A DISTANCE OF 132.26 FEET; **TO THE POINT OF BEGINNING.**

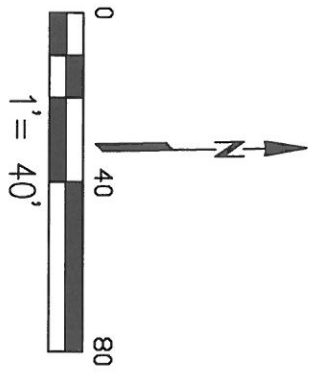
CONTAINING 8,443.73 SQUARE FEET. (MORE OR LESS)

NEW AREA OF EASEMENT BEING SUBJECT TO ALL EXISTING EASEMENTS OF RECORD.

BEARINGS BASED ON GRID NORTH, CENTRAL ZONE OF THE MISSOURI COORDINATE SYSTEM OF 1983.



*Randal S. Presley*  
02-22-2023



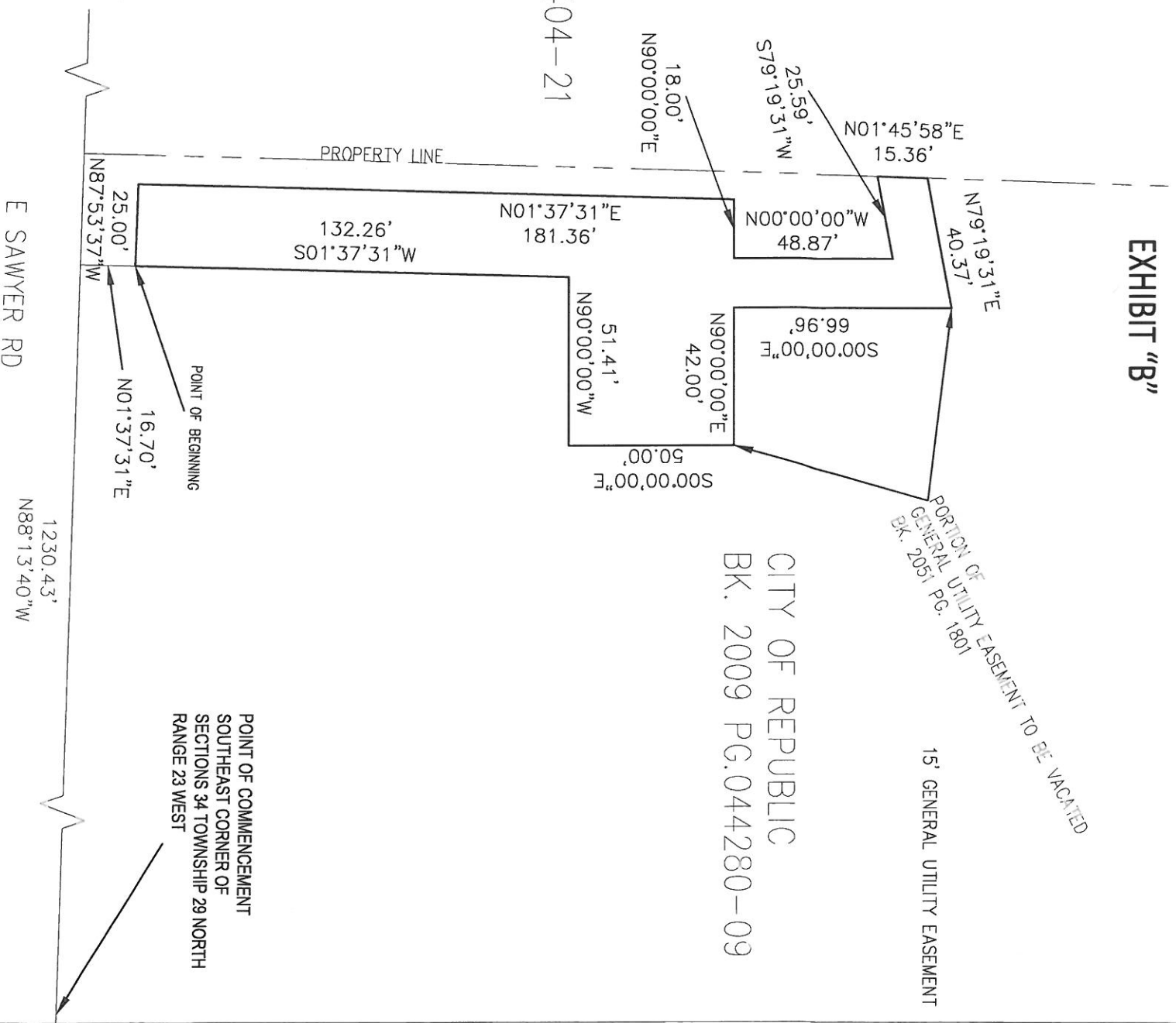
**EXHIBIT "B"**

REPUBLIC 63 LLC  
 BK. 2021 PG. 004404-21

CITY OF REPUBLIC  
 BK. 2009 PG. 044280-09

PORTION OF  
 GENERAL UTILITY EASEMENT TO BE VACATED  
 BK. 2051 PG. 1801

15' GENERAL UTILITY EASEMENT



POINT OF COMMENCEMENT  
 SOUTHEAST CORNER OF  
 SECTIONS 34 TOWNSHIP 29 NORTH  
 RANGE 23 WEST



**R E P U B L I C  
 B U I L D S**

Public Works - Community Development

THIS EXHIBIT WAS PRODUCED BY PUBLIC WORKS DEPARTMENT  
 OF THE CITY OF REPUBLIC AS A VISUAL AID DEPICTING THE  
 APPROXIMATE CONFIGURATION OF EASEMENT DESCRIBED IN  
 EXHIBIT "A".

E SAWYER RD

1230.43'  
 N88°13'40"W