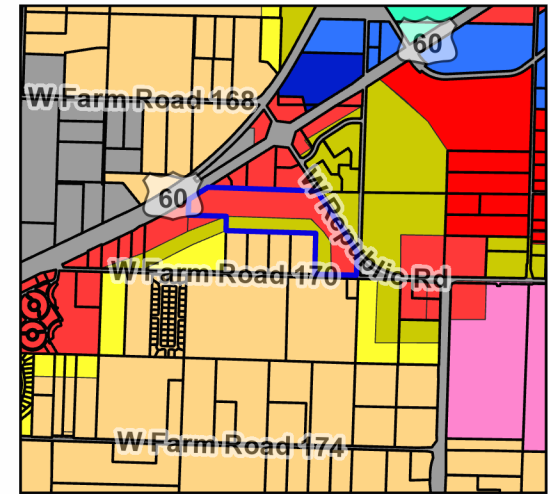
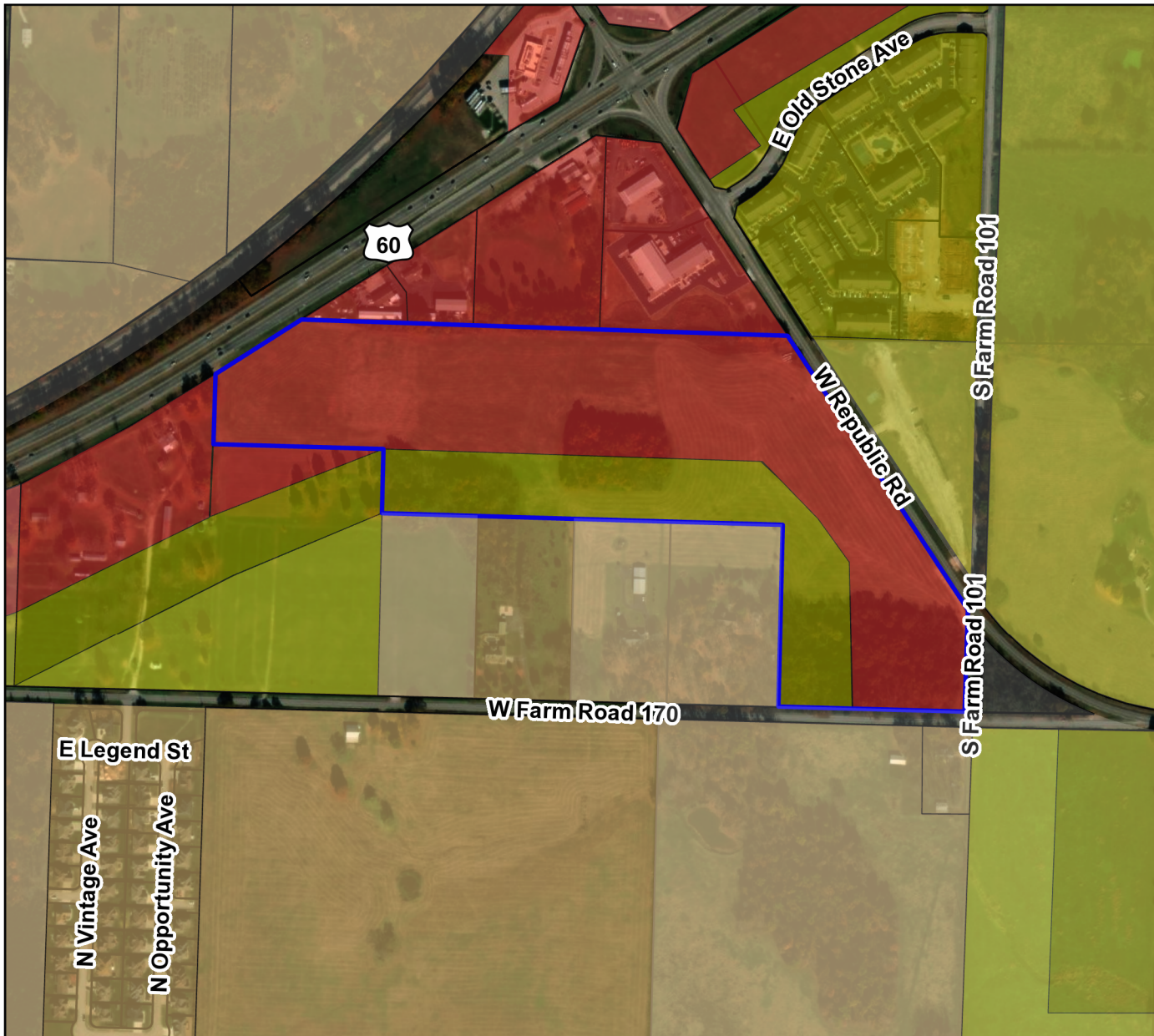


PDD 21-002: Boyce PDD

Future Land Use Map



Legend

- Parcels
- Boyce PDD
- Future Land Use**
- Low Density Residential
- High Density Residential
- Med Density Residential
- Main Street District
- C-1
- C-2
- M-1
- M-2
- Park
- Planned Business Park
- Public Land Use
- School Land Use

Parcel Owner: JSB Investments, LLC
 Parcel Address: NW of intersection of W FR 170 and S FR 101
 Area: 40.04 Acres
 Existing Zoning: Dean Hartman PDD
 Requested Zoning: Boyce PDD
 Future Land Use Designation: Neighborhood Commercial and High Density Residential

