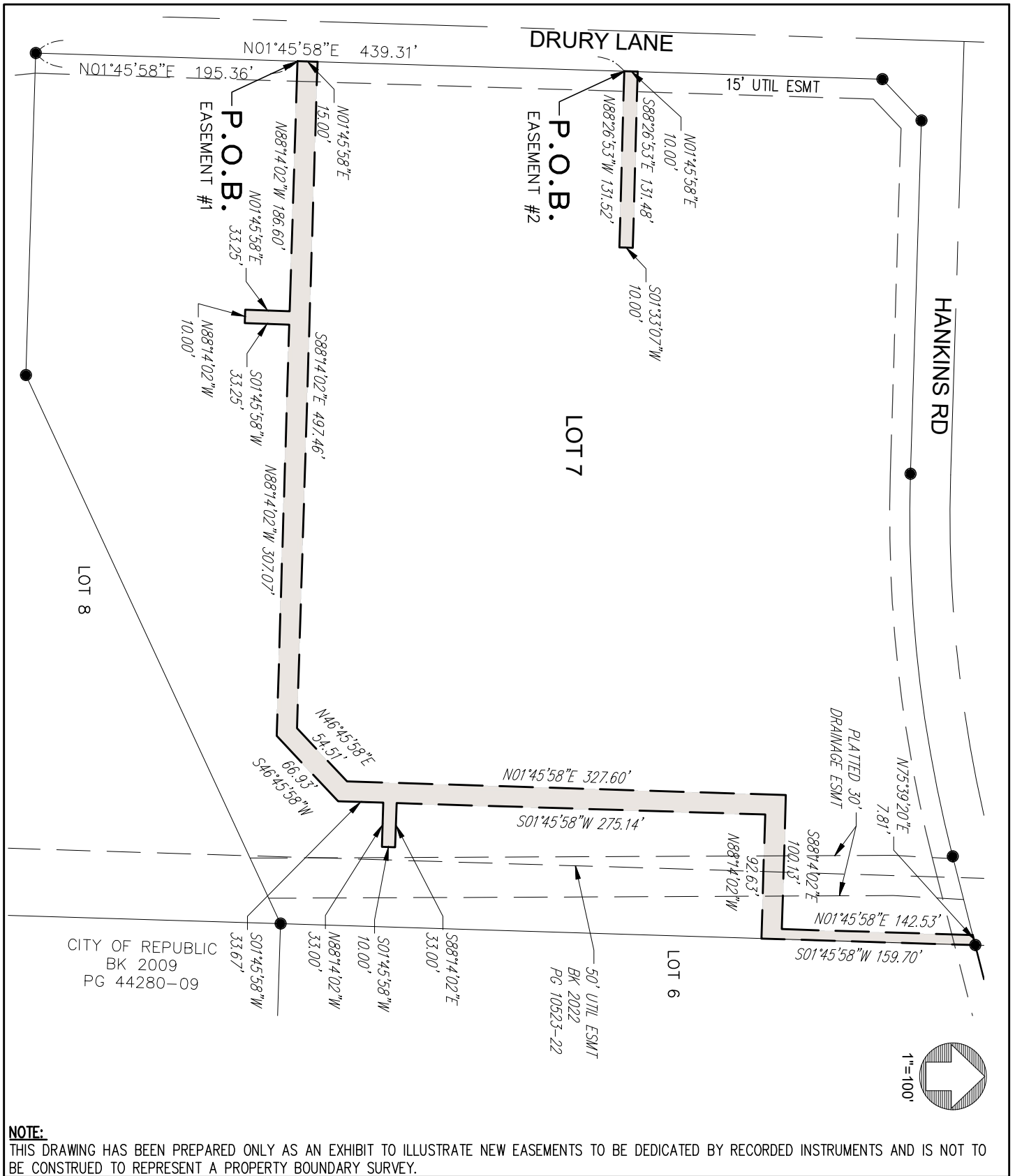


EXHIBIT "B"



PAGE 4 OF 4

**NOTE:**  
THIS DRAWING HAS BEEN PREPARED ONLY AS AN EXHIBIT TO ILLUSTRATE NEW EASEMENTS TO BE DEDICATED BY RECORDED INSTRUMENTS AND IS NOT TO BE CONSTRUED TO REPRESENT A PROPERTY BOUNDARY SURVEY.



LEE Engineering & Associates, L.L.C.  
1200 E. Woodhurst Dr., Suite D200  
Springfield, Missouri 65804  
417-886-9100 (phone)  
417-886-9336 (fax)  
dlee@leeengineering.biz  
*"Engineering with Integrity"*

Missouri State Certificate of Authority  
Engineering #2005016504  
Land Surveying #2009028050

**WATERLINE EASEMENTS  
LOT 7  
HANKINS FARM**

DATE:  
06/11/2024  
PROJECT NO.:#  
**2017**

## Exhibit "C"

### UTILITY EASEMENT #1

A perpetual utility easement being all that part of Lot Seven of Hankins Farm, a subdivision in the City of Republic, Greene County, Missouri, as shown on the recorded plat thereof, and being more particularly described as follows: Commencing at the Southwest corner of said Lot Seven; thence, North 01°45'58" East, along and with the West line of said Lot Seven, a distance of 195.36 feet to the POINT OF BEGINNING; thence, continue North 01°45'58" East, along and with said West line, a distance of 15.00 feet; thence, South 88°14'02" East, a distance of 497.46 feet; thence, North 46°45'58" East, a distance of 54.51 feet; thence, North 01°45'58" East, a distance of 327.60 feet; thence, South 88°14'02" East, a distance of 100.14 feet; thence, North 01°45'58" East, a distance of 142.53 feet to the South right-of-way line of Hankins Road; thence, North 75°39'20" East, along and with said South line, a distance of 7.81 feet; thence, South 01°45'58" West, along and with the East line of said Lot 7, a distance of 159.70 feet; thence, North 88°14'02" West, leaving said East line, a distance of 92.63 feet; thence, South 01°45'58" West, a distance of 275.14 feet; thence, South 88°14'02" East, a distance of 33.00 feet; thence, South 01°45'58" West, a distance of 10.00 feet; thence, North 88°14'02" West, a distance of 33.00 feet; thence South 01°45'58" West, a distance of 33.67 feet; thence, South 46°45'58" West, a distance of 66.93 feet; thence, North 88°14'02" West, a distance of 307.07 feet; thence, South 01°45'58" West, a distance of 33.25 feet; thence, North 88°14'02" West, a distance of 10.00 feet; thence, North 01°45'58" East, a distance of 33.25 feet; thence, North 88°14'02" West, a distance of 186.60 feet to the POINT OF BEGINNING, containing 17,715 square feet, more or less.

### UTILITY EASEMENT #2

A perpetual utility easement being all that part of Lot Seven of Hankins Farm, a subdivision in the City of Republic, Greene County, Missouri, as shown on the recorded plat thereof, and being more particularly described as follows: Commencing at the Southwest corner of said Lot Seven; thence, North 01°45'58" East, along and with the West line of said Lot Seven, a distance of 439.31 feet to the POINT OF BEGINNING; thence, North 01°45'58" East, continuing along and with the West line of said Lot Seven, a distance of 10.00 feet; thence, South 88°26'53" East, leaving said West line, a distance of 131.48 feet; thence, South 01°33'07" West, a distance of 10.00 feet; thence, North 88°26'53" West, a distance of 131.52 feet to the POINT OF BEGINNING, containing 1,315 square feet, more or less.