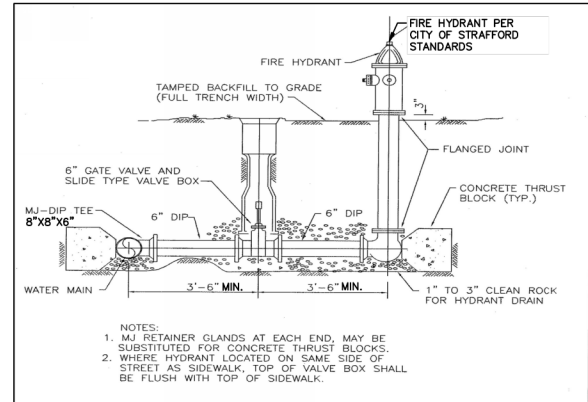
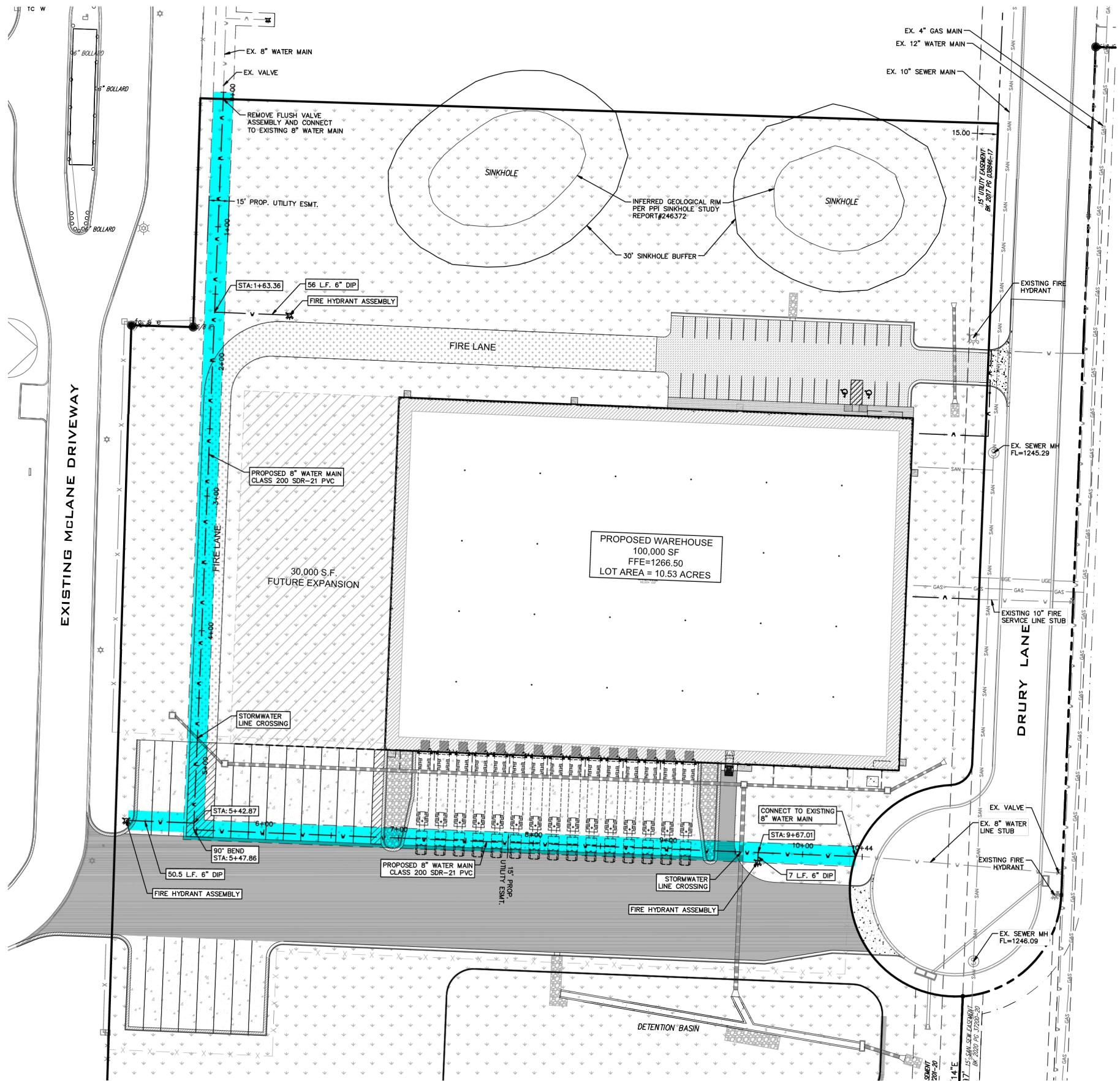
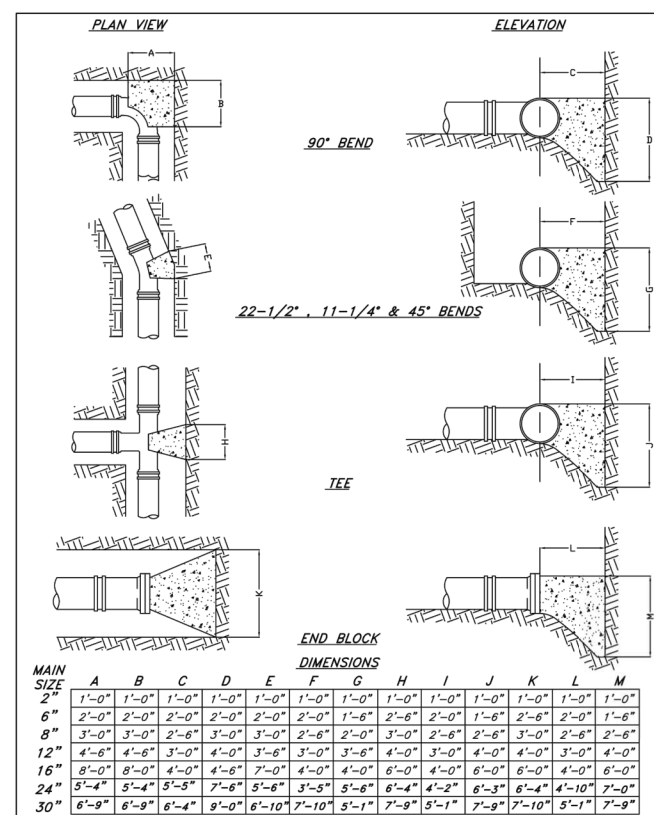


APPROXIMATE QUANTITIES:
 1035 LF 8" WATER MAIN (CLASS 200 SDR-21 PVC)
 3 EA FIRE HYDRANT ASSEMBLY (INCLUDING TEE, VALVE, APPURTENANCES, ETC.)
 113.5 LF 6" DUCTILE IRON PIPE

- GENERAL NOTES:**
- IT IS THE CONTRACTOR'S RESPONSIBILITY TO DETERMINE THE EXACT HORIZONTAL AND VERTICAL LOCATION OF EXISTING UNDERGROUND FACILITIES PRIOR TO BEGINNING INSTALLATION OF NEW FACILITIES. CONTACT THE ENGINEER FOR INSTRUCTIONS WHEREVER ANY CONFLICTS ARE DISCOVERED.
 - IT IS THE CONTRACTOR'S RESPONSIBILITY TO CORRECT ANY DAMAGE TO UNDERGROUND UTILITIES OR OTHER OBSTRUCTIONS WHICH IS DUE TO HIS OPERATIONS.
 - THE CONTRACTOR SHALL STRICTLY COMPLY WITH ALL OSHA SAFETY RULES AND REGULATIONS AND USE ONLY APPROVED EQUIPMENT REQUIRED FOR THE PERFORMANCE OF THE WORK. THE CONTRACTOR SHALL ALSO STRICTLY COMPLY WITH ALL OSHA SAFETY RULES AND REGULATIONS AND USE ONLY APPROVED METHODS OF EXCAVATION TRENCHING AND SHORING METHODS AS DESCRIBED IN OSHA 29 CFR 1926.650. THE CONTRACTOR SHALL MAINTAIN AND CLOSELY SUPERVISE ALL SAFETY PRACTICES AND CODES.
 - THE CONTRACTOR IS RESPONSIBLE FOR REPAIRING ANY DAMAGE TO CURB AND PAVEMENT BACK TO CITY SPECIFICATIONS.
 - CONTRACTOR IS REQUIRED TO TAKE CARE NOT TO DAMAGE ANY EXISTING STREET, CURB & GUTTER, SIDEWALK AND DRIVEWAY DURING CONSTRUCTION.
 - NO MEASUREMENTS SHALL BE SCALED OFF THE PLANS. USE ONLY LABELED DISTANCES.
 - WATER SYSTEM SHALL BE IN CONFORMANCE WITH THE CITY OF REPUBLIC CONSTRUCTION SPECIFICATIONS AND THE MINIMUM DESIGN STANDARDS FOR MISSOURI COMMUNITY WATER SYSTEMS OF THE MISSOURI DEPARTMENT OF NATURAL RESOURCES.
 - INSTALL PIPE IN STRICT ACCORDANCE WITH THE MANUFACTURERS INSTALLATION INSTRUCTIONS AND LAYING SCHEDULES.
 - ALL POINTS OF CHANGE OF DIRECTION, ELLS, TEES, FIRE HYDRANTS, ETC. MUST HAVE REQUIRED THRUST BLOCK AT ALL POINTS OF THRUST.
 - MINIMUM DEPTH OF COVER OVER TOP OF PIPE SHALL BE 42 INCHES.



FIRE HYDRANT ASSEMBLY
NOT TO SCALE



THRUST BLOCK DETAIL
NOT TO SCALE

DATE:	
BY:	
REVISIONS:	
SCALE: 1" = 40'	
FIELD BY: TS, JS	
DRAWN BY: RS	
CHECKED BY: LEE	

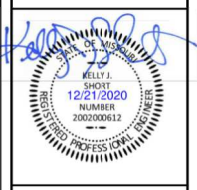
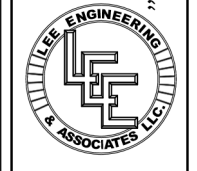
WATER MAIN PLAN

MCLANE WAREHOUSE

2893 NORTH DRURY LANE
REPUBLIC, MO, 65738

Missouri State Certificate of Authority
 Engineering #2005015504
 Land Surveying #2009028050

LEE Engineering & Associates, L.L.C.
 1200 E. Woodhurst Dr., Suite D200
 Springfield, Missouri 65807
 417-886-9100 (phone)
 417-886-9336 (fax)
 dlee@leeengineering.biz



DATE: 2020-12-21

SHEET: WT-1

PROJECT: 20

FILE: 020 - Mclane Site.dwg