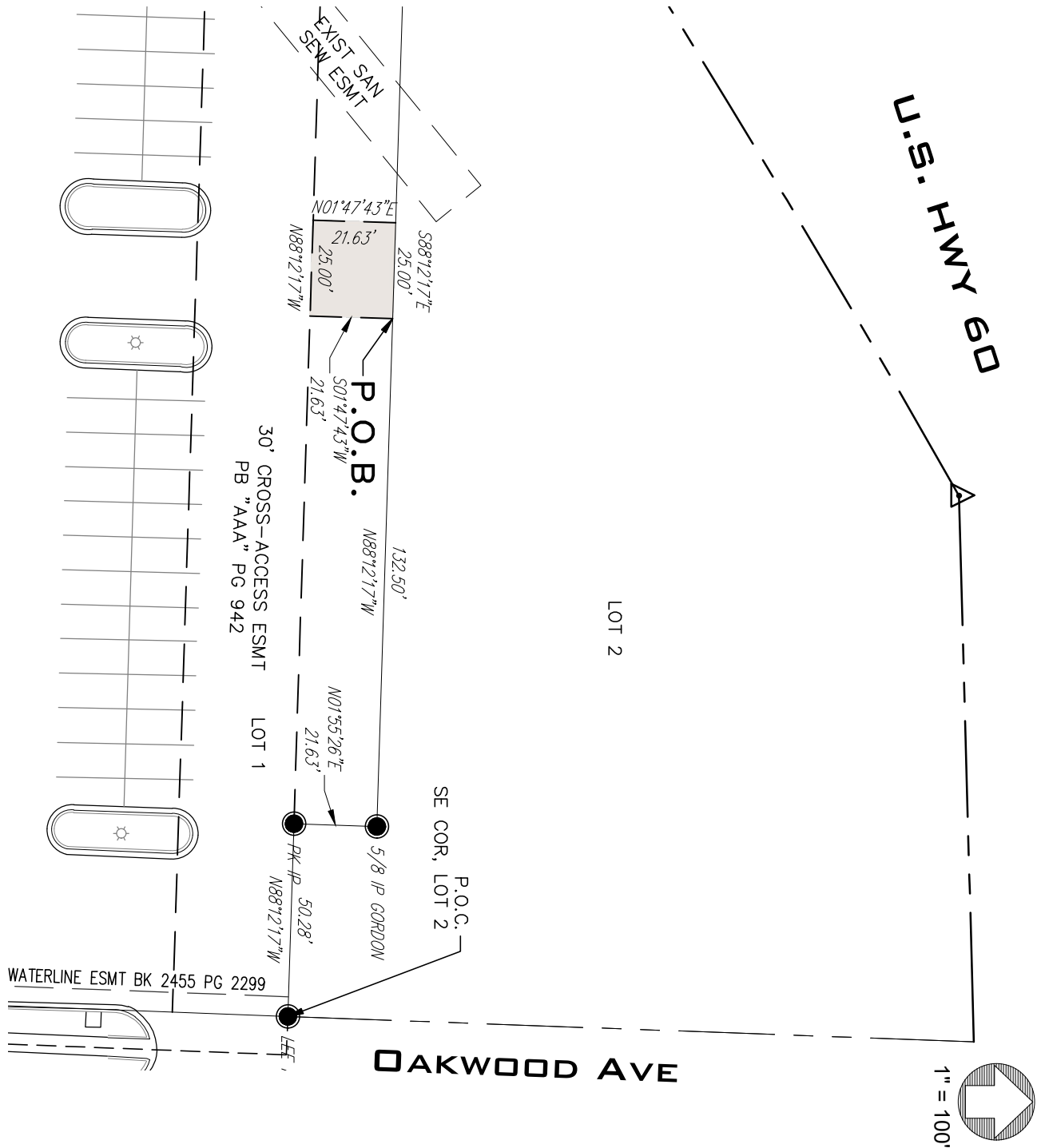


ACCESS EASEMENT VACATION

All of an existing 25-foot access easement being a part of Lot One of Town East, a minor subdivision in the City of Republic, Greene County, Missouri, as shown on the plat recorded in Plat Book "AAA" at Page 942 in the Office of the Recorder of Deeds, Greene County, Missouri and being more particularly described as follows: BEGINNING at an existing iron pin at the Northeast corner of Lot One of said Town East; thence, North 88°12'17" West, along and with the North line of said Lot One, a distance of 50.28 feet to an existing PK nail; thence, North 01°55'26" East, continuing along and with said North line, a distance of 21.63 feet to an existing iron pin; thence, North 88°12'17" West, along and with said North line, a distance of 132.50 feet to the Northeast corner of the existing 25-foot access easement and the POINT OF BEGINNING; thence, South 01°47'43" West, along and with said Easement, a distance of 21.63 feet to the North line of a platted 30-foot cross access easement; thence, North 88°12'17" West, along and with said North line, a distance of 25.00 feet; thence, North 01°47'43" East, along and with the West line of the 25-foot access easement, a distance of 21.63 feet to the North line of the aforementioned Lot One; thence, South 88°12'17" East, a distance of 25.00 feet to the POINT OF BEGINNING.

Said description intended to be one and the same as the 25-foot access easement to Lot 2, lying 145 feet West of the angle point of Lot One, Town East minor subdivision, as shown on the plat in Plat Book "AAA" at Page 942.



NOTE:
THIS DRAWING HAS BEEN PREPARED ONLY AS AN EXHIBIT TO ILLUSTRATE NEW EASEMENTS TO BE DEDICATED BY RECORDED INSTRUMENTS AND IS NOT TO BE CONSTRUED TO REPRESENT A PROPERTY BOUNDARY SURVEY.



LEE Engineering & Associates, L.L.C.
1200 E. Woodhurst Dr., Suite D200
Springfield, Missouri 65804
417-886-9100 (phone)
417-886-9336 (fax)

dlee@leeengineering.biz

"Engineering with Integrity"

Missouri State Certificate of Authority
Engineering #2005016504
Land Surveying #2009028050

25-FOOT ACCESS ESMT VACATION EXHIBIT

DATE:

04/15/2025

PROJECT NO.:

2424