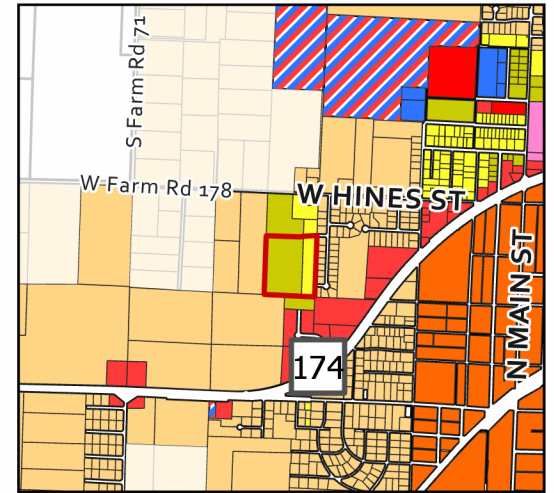
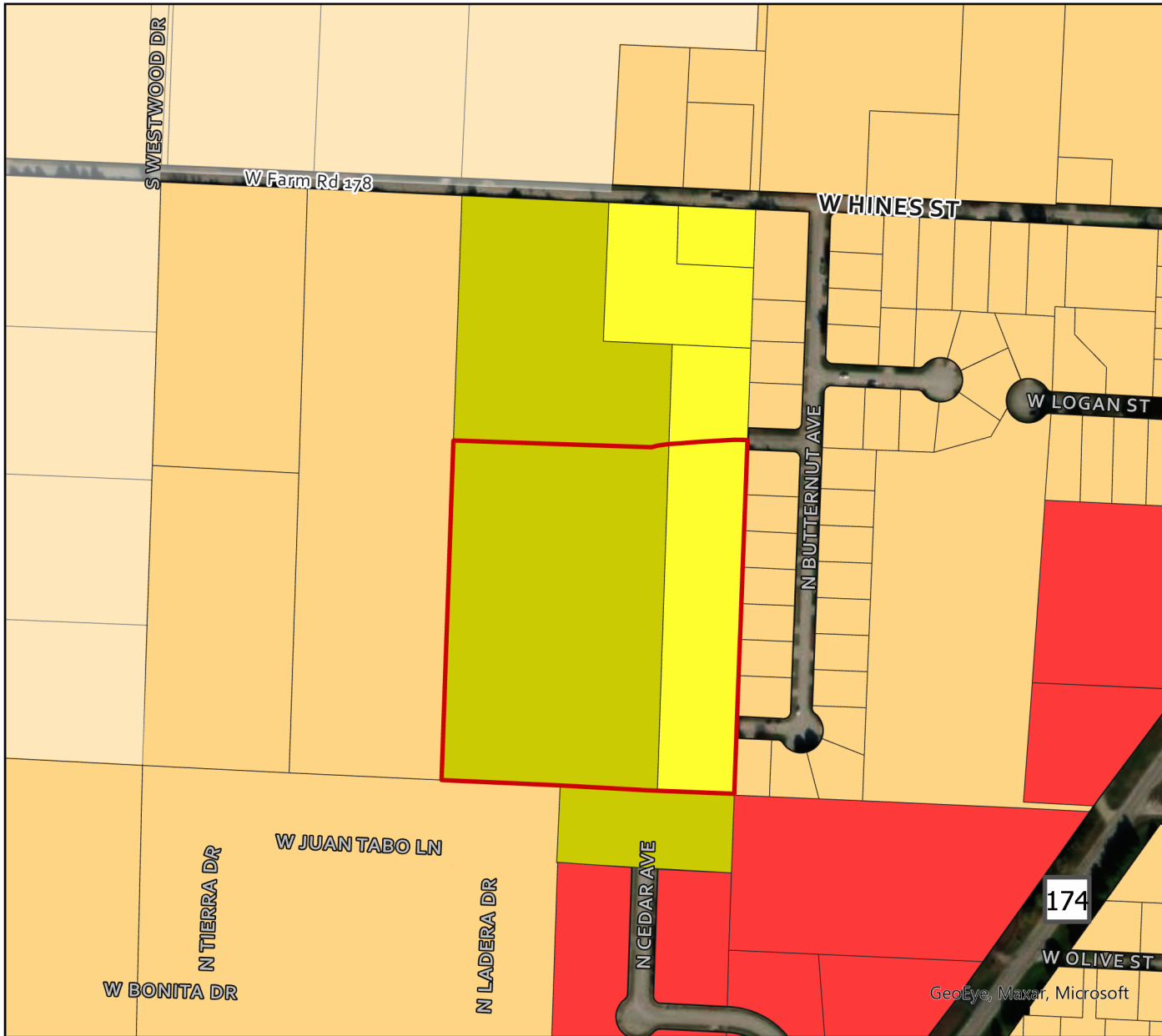


REZN 21-002: 634 West Hines Street

Future Land Use Map



Legend

- Parcels
- 634 West Hines Street
- Future Land Use**
- Low Density Residential
- High Density Residential
- Med Density Residential
- Main Street District
- C-1
- C-2
- M-1
- M-2
- Park
- Planned Business Park
- Public Land Use
- School Land Use

Parcel Owner: Cedar Park Investments, LLC
 Parcel Address: 634 West Hines Street
 Area: 11.8 Acres
 Existing Zoning: Two-Family Residential (R-2), Multi-Family Residential (R-3)
 Requested Zoning: Two-Family Residential (R-2), Multi-Family Residential (R-3)
 Future Land Use Designation: High Density Residential Medium Density Residential

