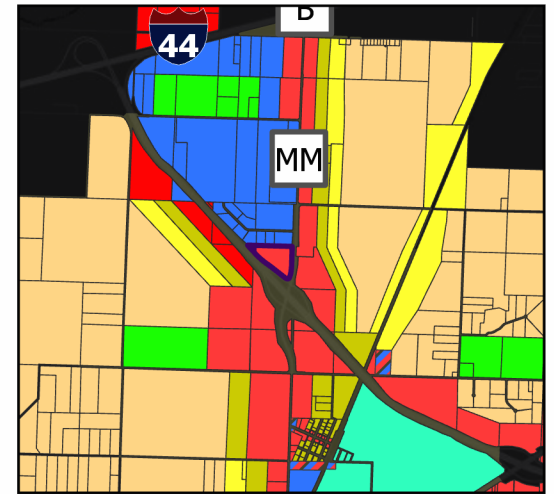
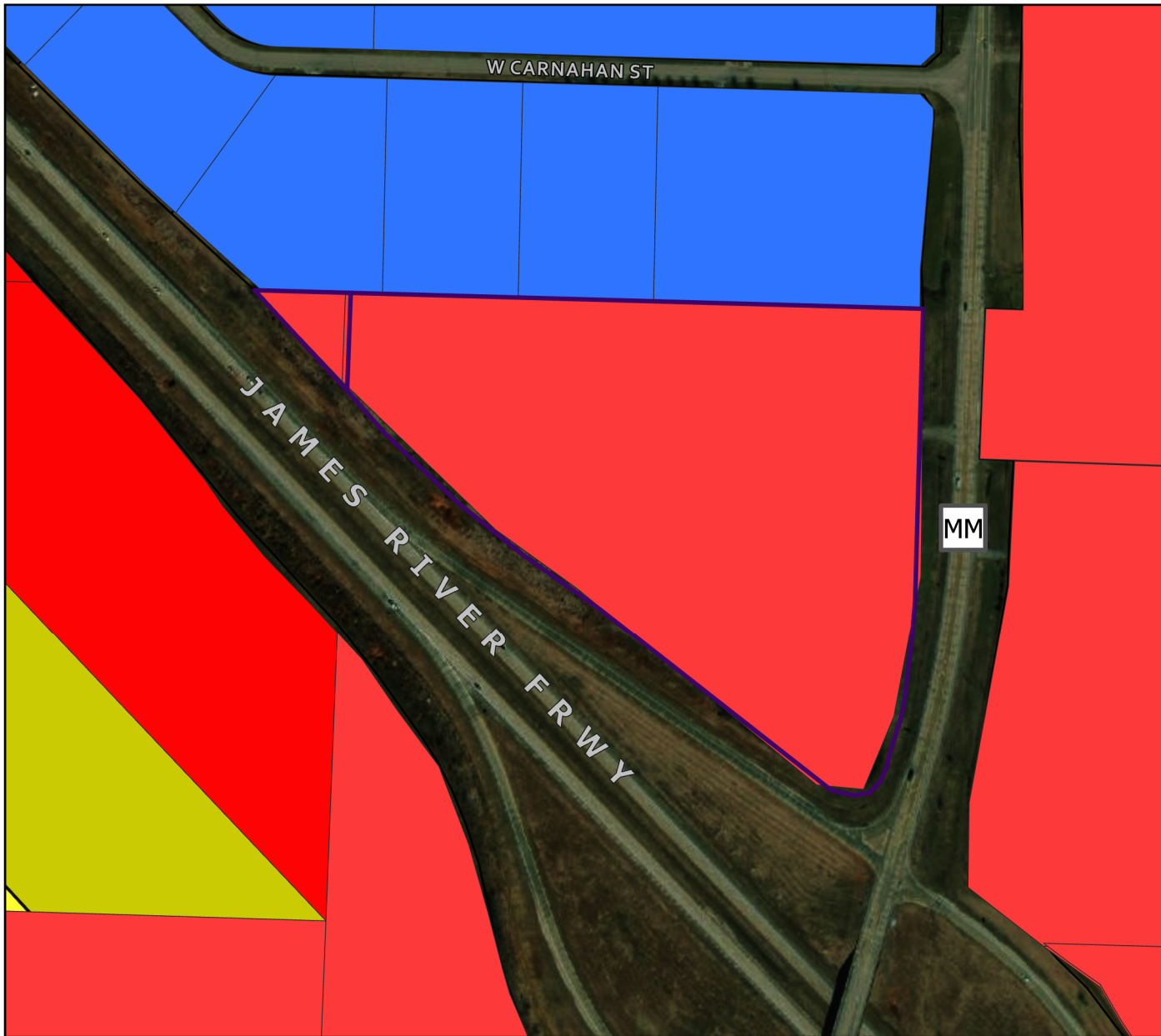


# REZN 20-007: Morelock

## Future Land Use Map



### Legend

- Parcels
- Morelock\_Prop
- Future Land Use**
  - Low Density Residential
  - High Density Residential
  - Med Density Residential
  - Main Street District
  - C-1
  - C-2
  - M-1
  - M-2
  - Park
  - Planned Business Park
  - Public Land Use
  - School Land Use

Parcel Owner: Tarasa LLC  
PIN: 881434100005 and 881434100008  
Area: 18.97 Acres and 0.22 Acres  
Existing Zoning: Agricultural (AG) and General Commercial (C-2)  
Requested Zoning: Light Manufacturing (M-1)  
Future Land Use Designation: Local Commercial

