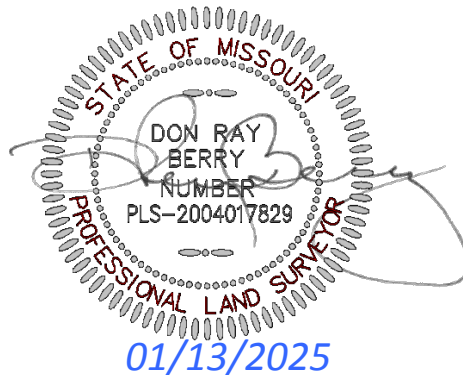
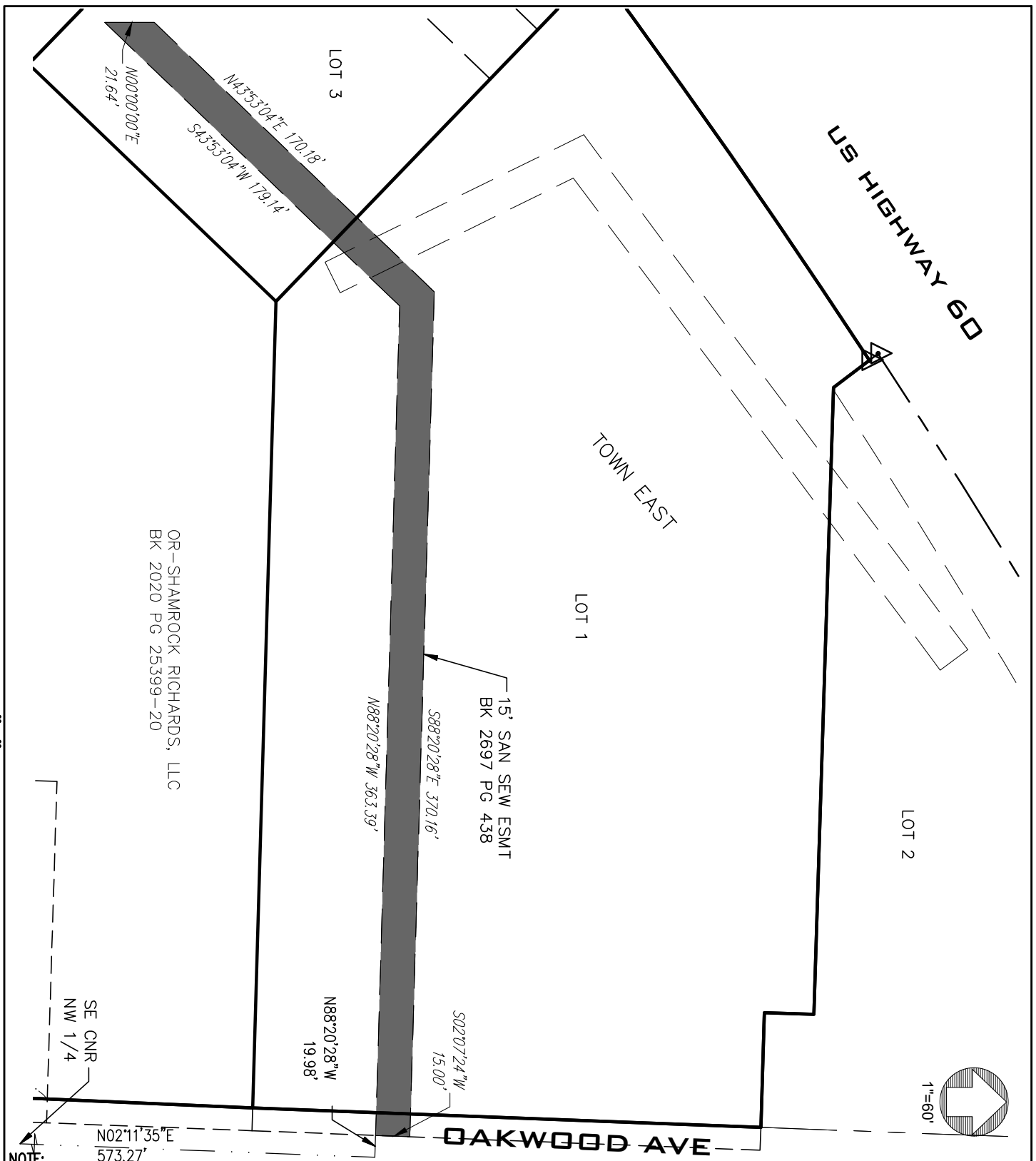


PERMANENT SANITARY SEWER EASEMENT

COMMENCING AT AN EXISTING IRON PIN AT THE SOUTHEAST CORNER OF THE NORTHWEST QUARTER OF SECTION 16, TOWNSHIP 28 NORTH, RANGE 23 WEST;  
THENCE, N02°11'35"E, ALONG THE EAST LINE OF SAID NORTHWEST QUARTER, A DISTANCE OF 573.27 FEET;  
THENCE, N88°20'28"W, 19.98 FEET TO A POINT ON THE SOUTH LINE OF THE GRANTORS PROPERTY AND THE POINT OF BEGINNING;  
THENCE, CONTINUING ALONG SAID SOUTH LINE, N88°20'28"W, 363.51 FEET;  
THENCE, CONTINUING ALONG SAID SOUTH LINE, S43°53'04"W, 179.14 FEET;  
THENCE, N00°00'00"E, 21.64 FEET;  
THENCE, N43°53'04"W, 170.18 FEET;  
THENCE, S88°20'28"E, 370.16 FEET TO THE EAST LINE OF THE GRANTORS PROPERTY;  
THENCE, ALONG SAID EAST LINE, S02°07'24"W, 15.00 FEET TO THE POINT OF BEGINNING.  
CONTAINING 0.19 ACRES. (MORE OR LESS)





NOTE: THIS DRAWING HAS BEEN PREPARED ONLY AS AN EXHIBIT TO ILLUSTRATE NEW EASEMENTS TO BE DEDICATED BY RECORDED INSTRUMENTS AND IS NOT TO BE CONSTRUED TO REPRESENT A PROPERTY BOUNDARY SURVEY.



LEE Engineering & Associates, L.L.C.  
 1200 E. Woodhurst Dr., Suite D200  
 Springfield, Missouri 65804  
 417-886-9100 (phone)  
 417-886-9336 (fax)  
 dlee@leeengineering.biz

"Engineering with Integrity"

Missouri State Certificate of Authority  
 Engineering #2009016504  
 Land Surveying #2009028050

**SANITARY SEWER  
 EASEMENT  
 RELINQUISHMENT  
 EXHIBIT**

DATE:

12/20/24

PROJECT NO.:

2424