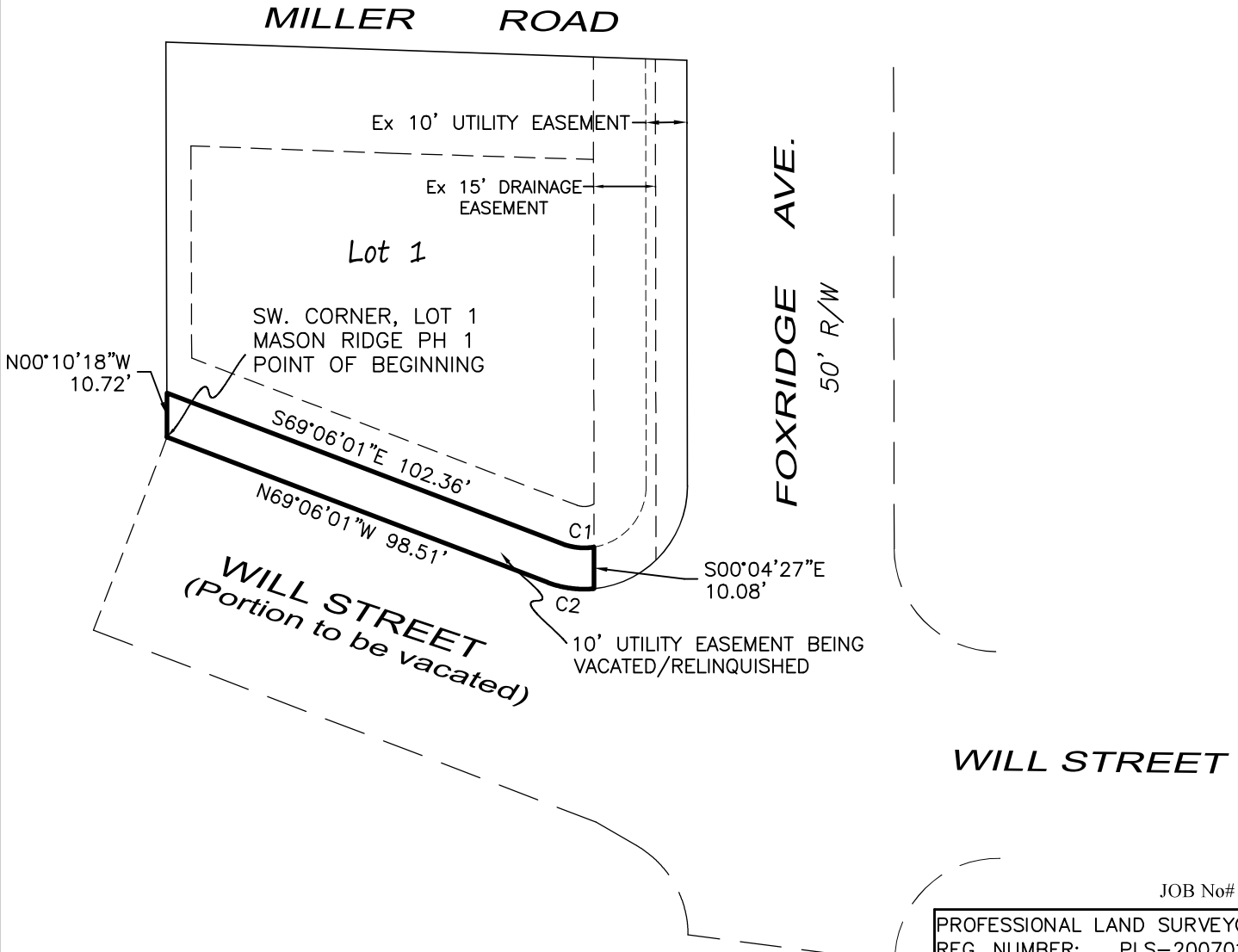




1"=40'

EXHIBIT "B" VACATION OF EASEMENT

LOCATED IN LOT 1,
MASON RIDGE PHASE I
PART OF SEC. 28, T28N, R23W
REPUBLIC, GREENE COUNTY, MISSOURI



JOB No# 250513

PROFESSIONAL LAND SURVEYOR
REG. NUMBER: PLS-2007017965
CORPORATION# 2022004477

CURVE	RADIUS	ARC LENGTH	CHORD LENGTH	CHORD BEARING
C1	15.00'	7.87'	7.78'	S84°07'43"E
C2	25.00'	11.52'	11.42'	N82°18'18"W

O & M
SURVEYING
LLC
(417) 832-1405
(417) 830-1171

LAND SURVEYORS,
PLANNERS, &
CONSTRUCTION STAKING

472 TROUT ROAD
OZARK, MISSOURI 65721

