



Owner
TIMBERLINE LAND CO LLC

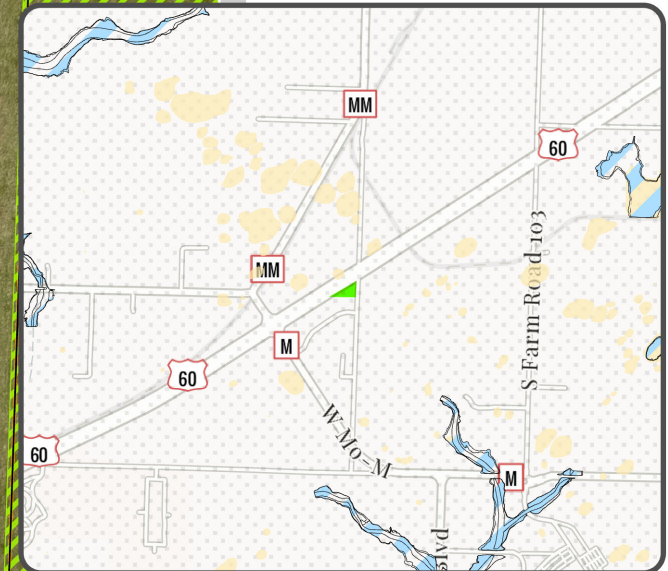
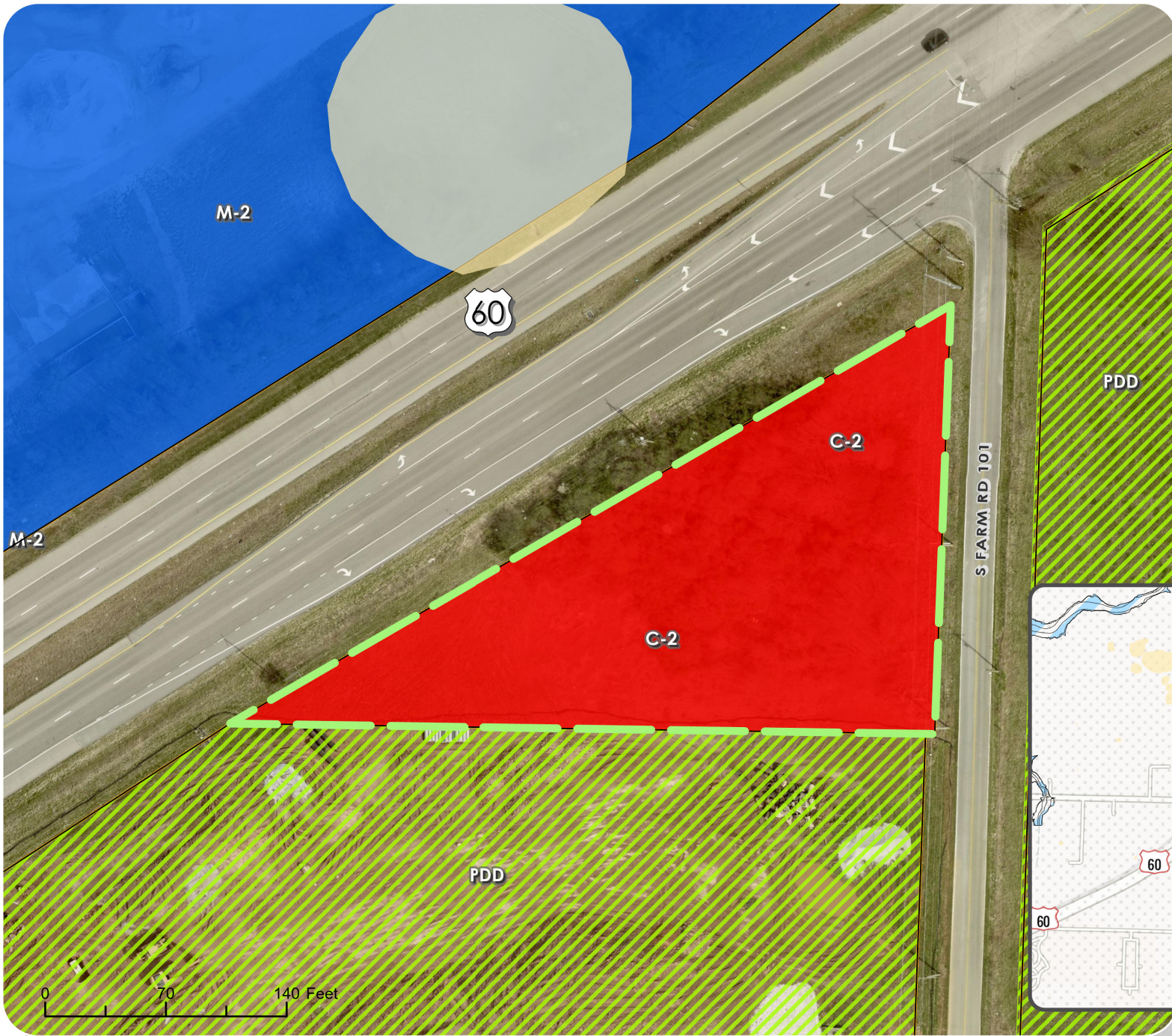
Address
S FARM ROAD 101

PIN
881710100011

Zoning
C-2 | Requested: N/A

Acreage
1.2

Ward
1



Simply Smart Self Storage

SU 22-004 Special Use

- Sinkholes
- Parcels Greene County

- Parcels Christian County