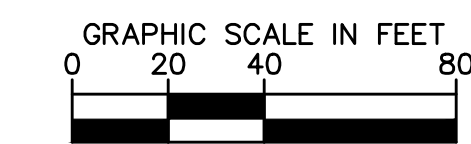
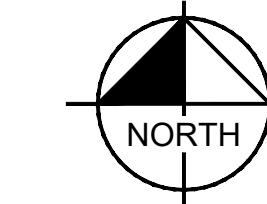


SITE LOCATION MAP
(NOT TO SCALE)



LEGEND

	PROPERTY LINE
	OPEN SPACE
	EASEMENT LINE

OPEN SPACE CALCULATIONS

	BLOCK A, LOT 2
TOTAL SITE AREA - AC/SF	6.95 AC / 302,812 SF
REQUIRED OPEN SPACE AREA (7% OF TOTAL LOT AREA)	21,197 SF
PROVIDED OPEN SPACE AREA	77,167 SF (25.5%)

**ELEVATION MATERIALS
CALCULATION TABLE**

	NORTH	SOUTH	EAST	WEST
TOTAL SURFACE AREA	3018sf	2013sf	1716sf	1716sf
GLAZING SURFACE AREA	520sf	256sf	117sf	106sf
NET SURFACE AREA	2498sf	1757sf	1599sf	1610sf
AREA OF EACH MATERIAL				
BRICK	1872sf / 75%	1757sf / 100%	1310sf / 82%	1379sf / 86%
STONE	626sf / 25%	0sf / 0%	289sf / 18%	231sf / 14%

LOTS 2R, 5, 6, 7 AND 8
O.C. NO. 2019-455, P.R.C.C.T.
O.C. 2019, PG. 773, P.R.C.C.T.

PROSPER VILLAGES AT LEGACY LLC
O.C. NO. 2017-116776
O.R.D.C.T.

10' ATMOS ENERGY CORPORATION
EASEMENT AND RIGHT-OF-WAY
INST. NO. 201710200480200
O.P.R.C.C.T.

LOT 7, BLOCK D
PROSPER CENTER, BLOCK D,
LOTS 2R, 5, 6, 7 AND 8
O.C. NO. 2019-455, P.R.D.C.T.
VOL. 2019, PG. 773, P.R.C.C.T.

PROSPER VILLAGES AT LEGACY LLC
O.C. NO. 2017-116776
O.R.D.C.T.

APPROXIMATE LOCATION OF
UNDERGROUND GAS LINE
AS MARKED BY OTHERS

LOT 1, BLOCK A
PROSPER, LOT 1, BLOCK A
VOL. 2015, PG. 674
P.R.C.C.T.

OF WAY DEDICATION
ACRE (40,844 SQ. FT.)
DEDICATED TO THE TOWN OF
PROSPER IN FEE SIMPLE
VOL. 2015, PG. 674
P.R.C.C.T.

APPROXIMATE LOCATION OF
UNDERGROUND GAS LINE
AS MARKED BY OTHERS

APPROXIMATE LOCATION OF
UNDERGROUND GAS LINE
AS MARKED BY OTHERS

APPROXIMATE LOCATION OF
UNDERGROUND GAS LINE
AS MARKED BY OTHERS

APPROXIMATE LOCATION OF
UNDERGROUND GAS LINE
AS MARKED BY OTHERS

APPROXIMATE LOCATION OF
UNDERGROUND GAS LINE
AS MARKED BY OTHERS

APPROXIMATE LOCATION OF
UNDERGROUND GAS LINE
AS MARKED BY OTHERS

APPROXIMATE LOCATION OF
UNDERGROUND GAS LINE
AS MARKED BY OTHERS

APPROXIMATE LOCATION OF
UNDERGROUND GAS LINE
AS MARKED BY OTHERS

APPROXIMATE LOCATION OF
UNDERGROUND GAS LINE
AS MARKED BY OTHERS

APPROXIMATE LOCATION OF
UNDERGROUND GAS LINE
AS MARKED BY OTHERS

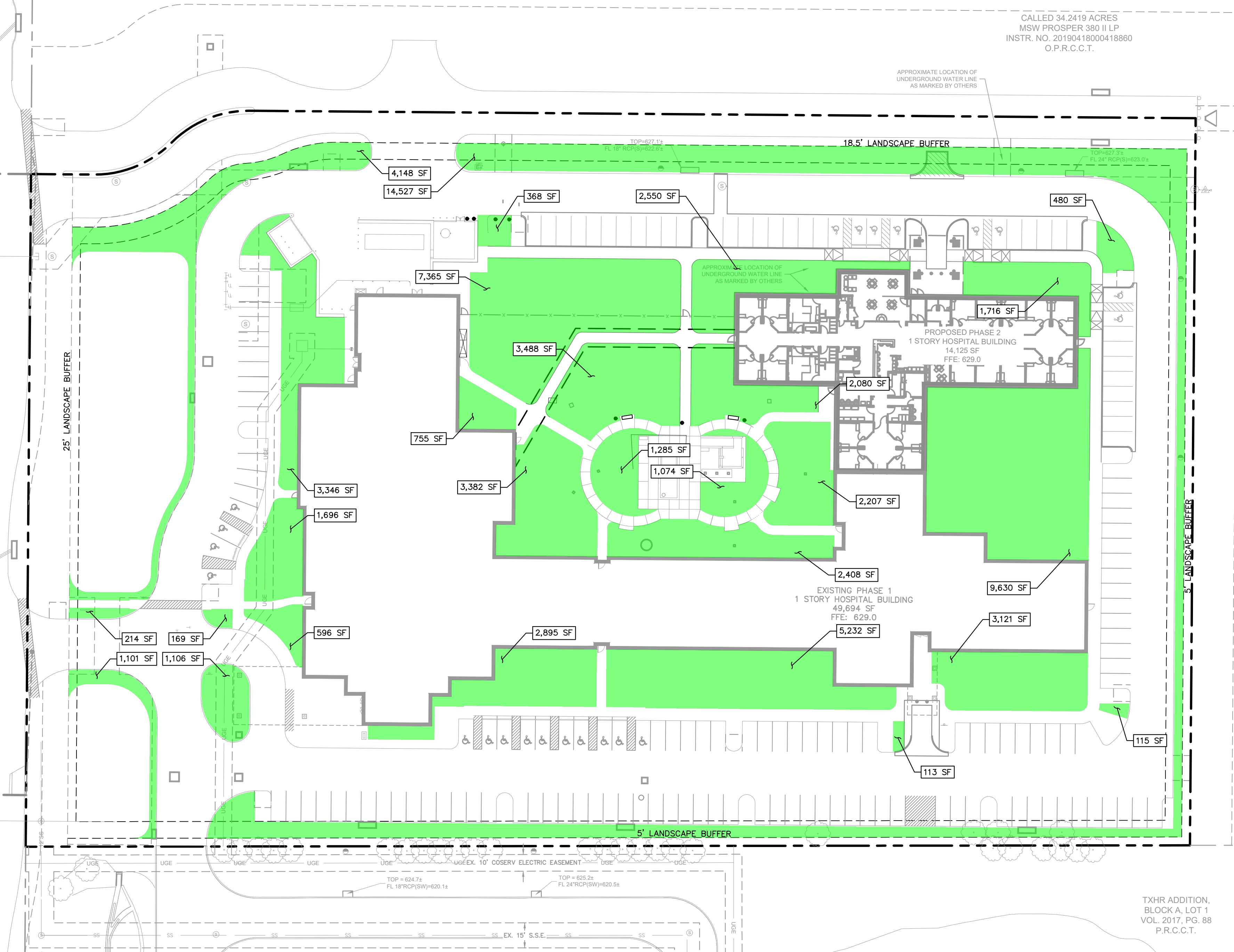
APPROXIMATE LOCATION OF
UNDERGROUND GAS LINE
AS MARKED BY OTHERS

APPROXIMATE LOCATION OF
UNDERGROUND GAS LINE
AS MARKED BY OTHERS

APPROXIMATE LOCATION OF
UNDERGROUND GAS LINE
AS MARKED BY OTHERS

APPROXIMATE LOCATION OF
UNDERGROUND GAS LINE
AS MARKED BY OTHERS

APPROXIMATE LOCATION OF
UNDERGROUND GAS LINE
AS MARKED BY OTHERS



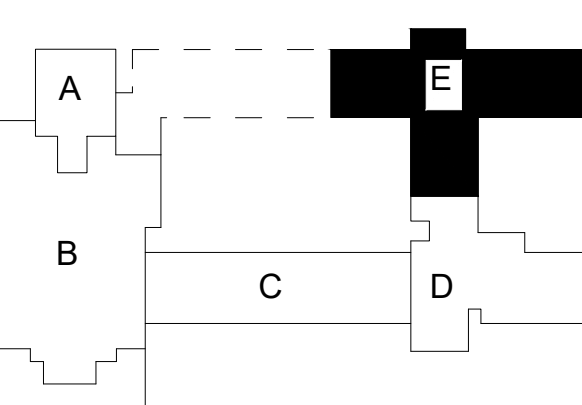
TXHR ADDITION,
BLOCK A, LOT 1
VOL. 2017, PG. 88
P.R.C.C.T.

CALLED 4.143 ACRES
TEXAS HEALTH RESOURCES
INST. NO. 20181212001513610
O.P.R.C.C.T.

OPEN SPACE PLAN
EHC PROSPER PHASE II
BLOCK A, LOT 2
CASE # - D21-0102
6.95 ACRES
COLLIN COUNTY SCHOOL AND LAND NO. 12 SURVEY, ABSTRACT NO. 147
TOWN OF PROSPER, COLLIN COUNTY, TEXAS
PREPARATION DATE: JANUARY, 2023

ENGINEER / SURVEYOR
KIMLEY-HORN AND ASSOCIATES, INC.
100 WEST OAK STREET, SUITE 203
DENTON, TX, 76201
PHONE (940) 287-3620
CONTACT: MACK MATTHEW, P.E.
MATT.MATTHEW@KIMLEY-HORN.COM

OWNER / APPLICANT
ENCOMPASS HEALTH
9001 LIBERTY PARKWAY
BIRMINGHAM, AL 35242
PHONE (205) 234-7627
ANNE.HEALY@ENCOMPASSHEALTH.COM
CONTACT: ANNE HEALY



REVISIONS & PREVIOUS DRAWING SETS

Rev. No	Description	Date
1	ADDENDUM #1	02/13/2026
2	ADDENDUM #2	02/24/2026
3	ADDENDUM #3	03/17/2026

CURRENT DRAWING SET

Rev. No	Description	Date
1	ADDENDUM #1	02/13/2026
2	ADDENDUM #2	02/24/2026
3	ADDENDUM #3	03/17/2026