

MATERIALS AND CALCULATIONS

WEST	SOUTH	EAST	NORTH
TOTAL FACADE: 3,325 SF DOORS/GLAZING: 980 SF NET FACADE: 2,245 SF 100%	TOTAL FACADE: 1,772 SF DOORS/GLAZING: 200 SF NET FACADE: 1,572 SF 100%	TOTAL FACADE: 3,113 SF DOORS/GLAZING: 122 SF NET FACADE: 2,991 SF 100%	TOTAL FACADE: 1,870 SF DOORS/GLAZING: 426 SF NET FACADE: 1,444 SF 100%
MASONRY (STONE): 543 SF 24% MASONRY (BRICK): 1,407 SF 63% TOTAL MASONRY: 87%	MASONRY (STONE): 338 SF 21% MASONRY (BRICK): 999 SF 64% TOTAL MASONRY: 85%	MASONRY (STONE): 785 SF 26% MASONRY (BRICK): 2,061 SF 69% TOTAL MASONRY: 95%	MASONRY (STONE): 309 SF 21% MASONRY (BRICK): 920 SF 64% TOTAL MASONRY: 85%
AWNINGS AND CORNICE: 295 SF 13%	AWNINGS, STUCCO AND CORNICE: 235 SF 15%	AWNINGS AND CORNICE: 145 SF 5%	AWNINGS, STUCCO AND CORNICE: 215 SF 15%

TOTAL FACADE:	10,080 SF
TOTAL DOORS/GLAZING:	1,728 SF
NET FACADE:	8,352 SF 100%
TOTAL MASONRY:	7,462 SF 89%
TOTAL AWNINGS AND CORNICE :	890 SF 11%

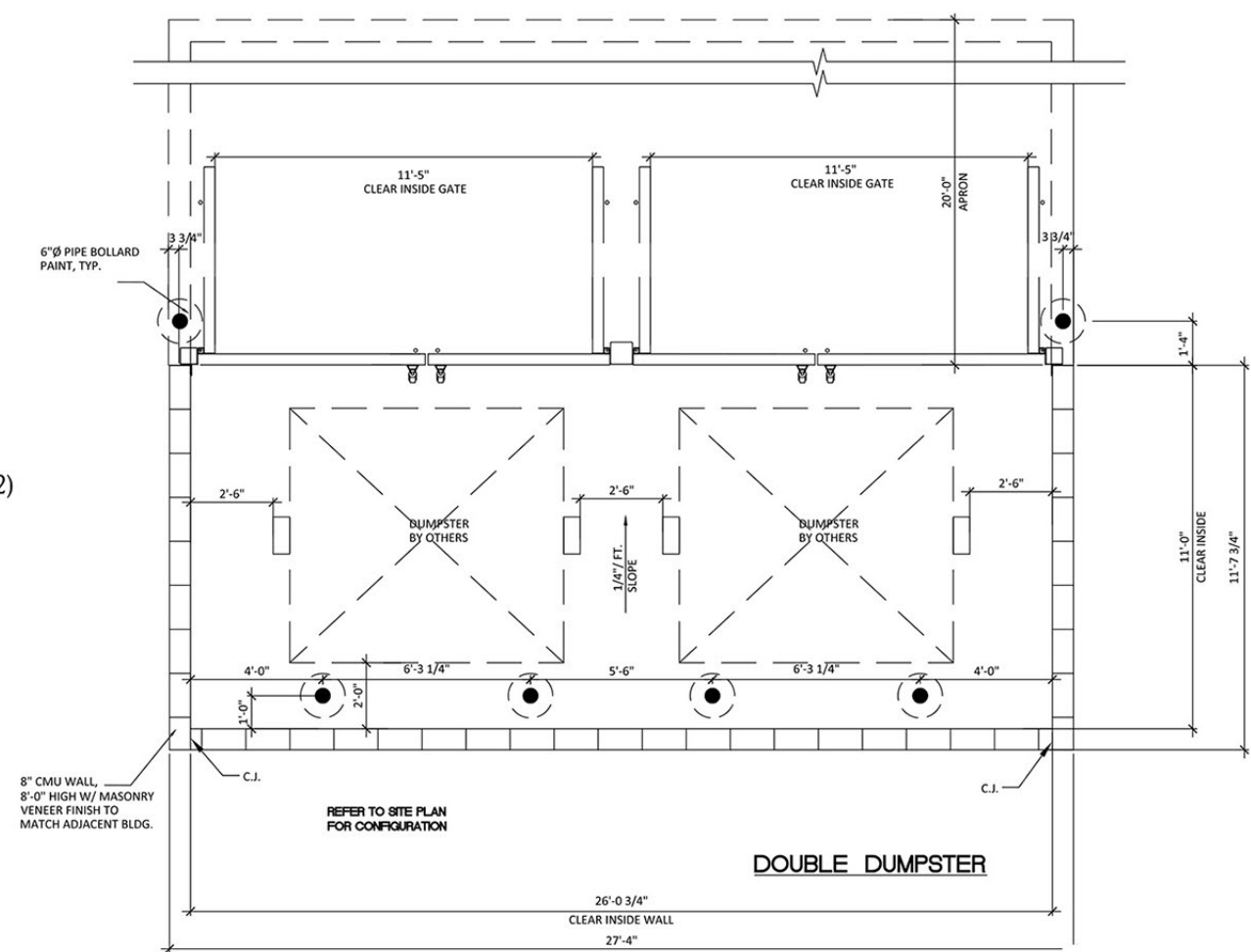
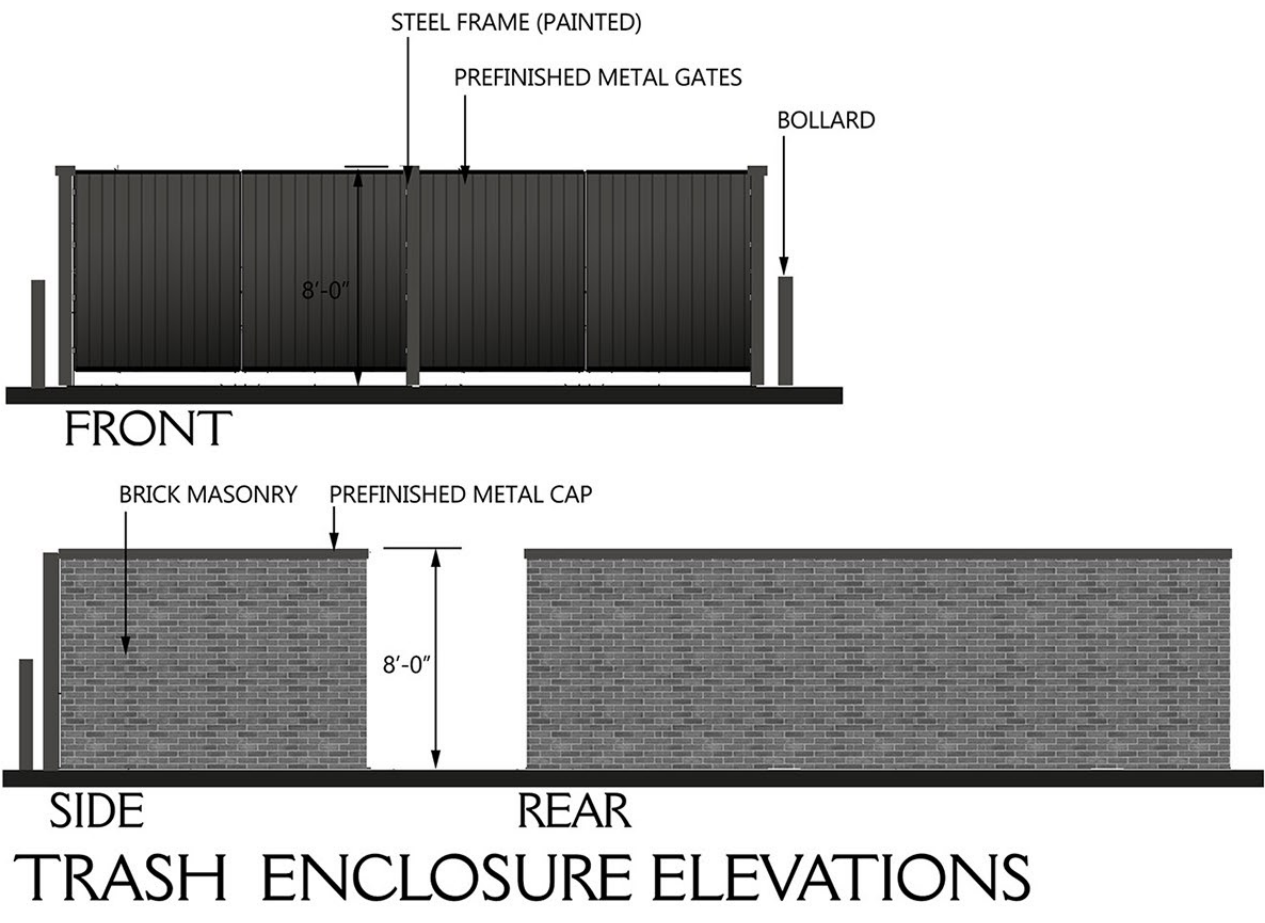
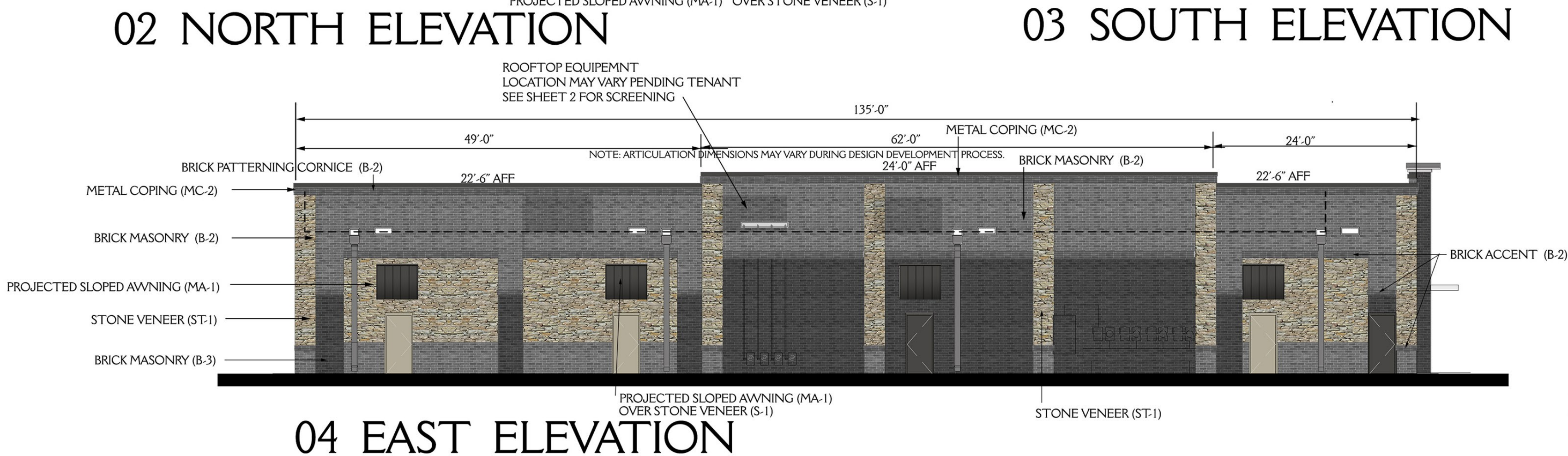
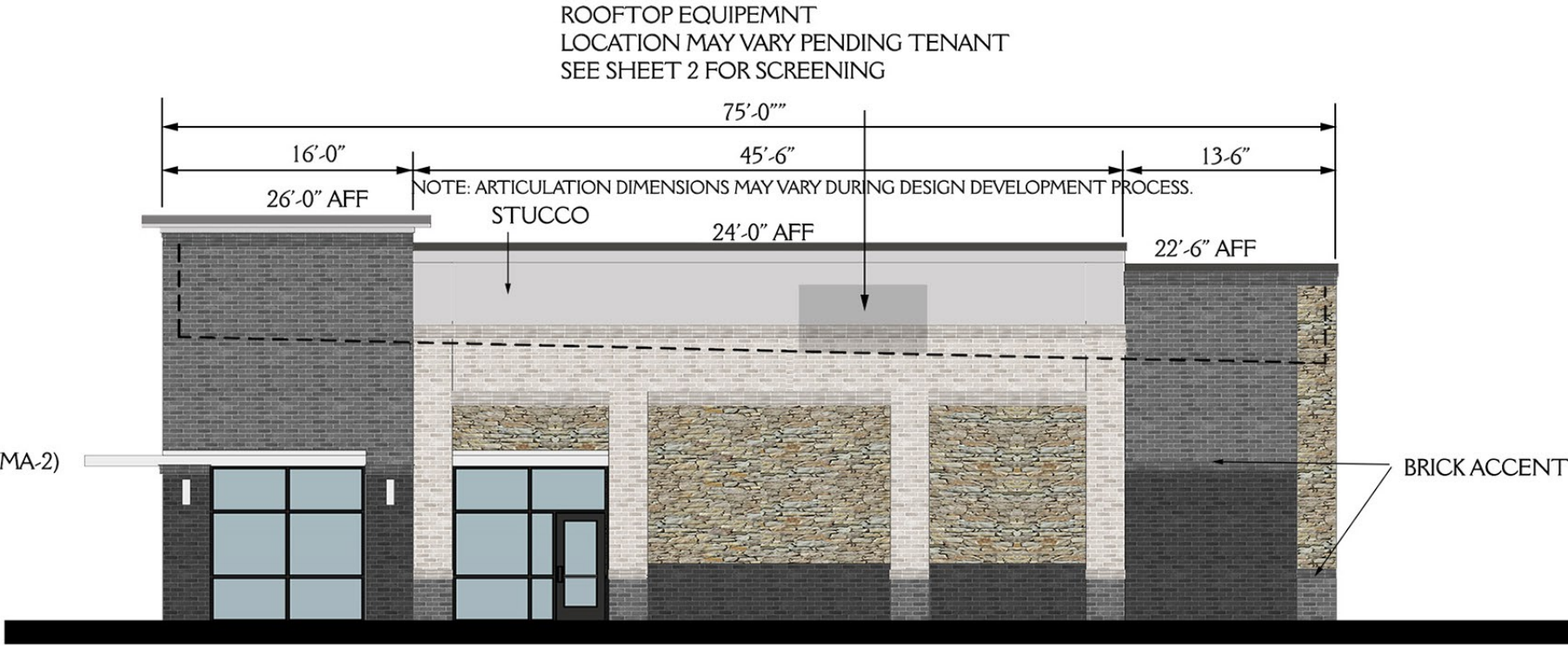
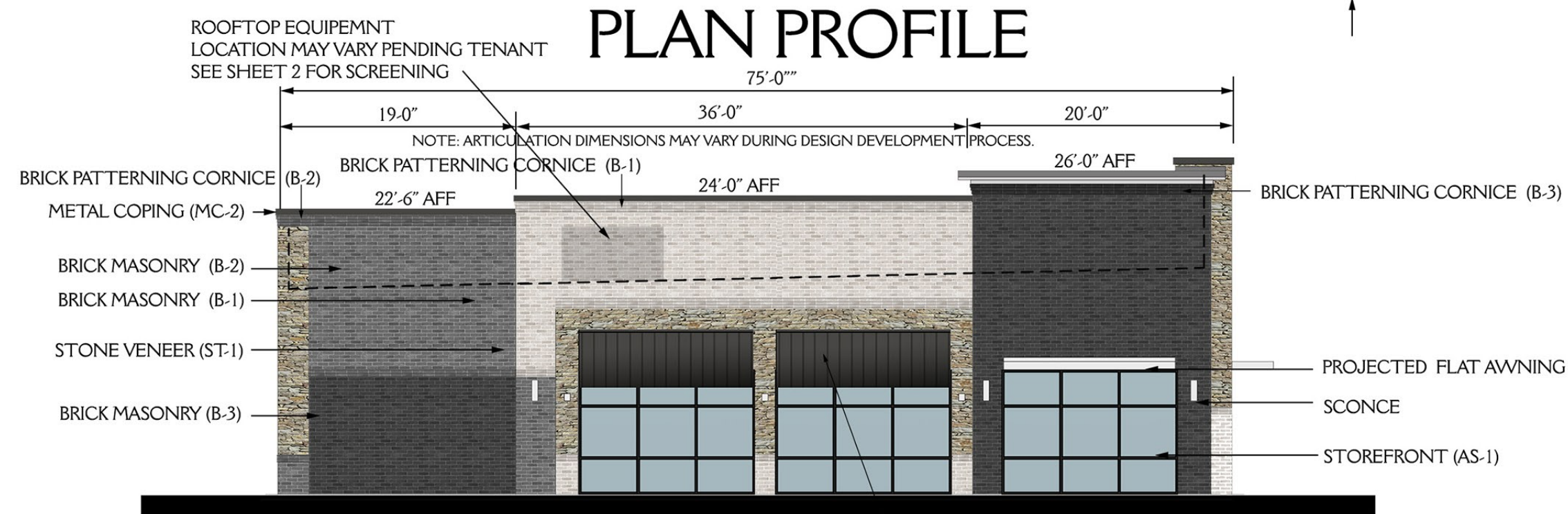
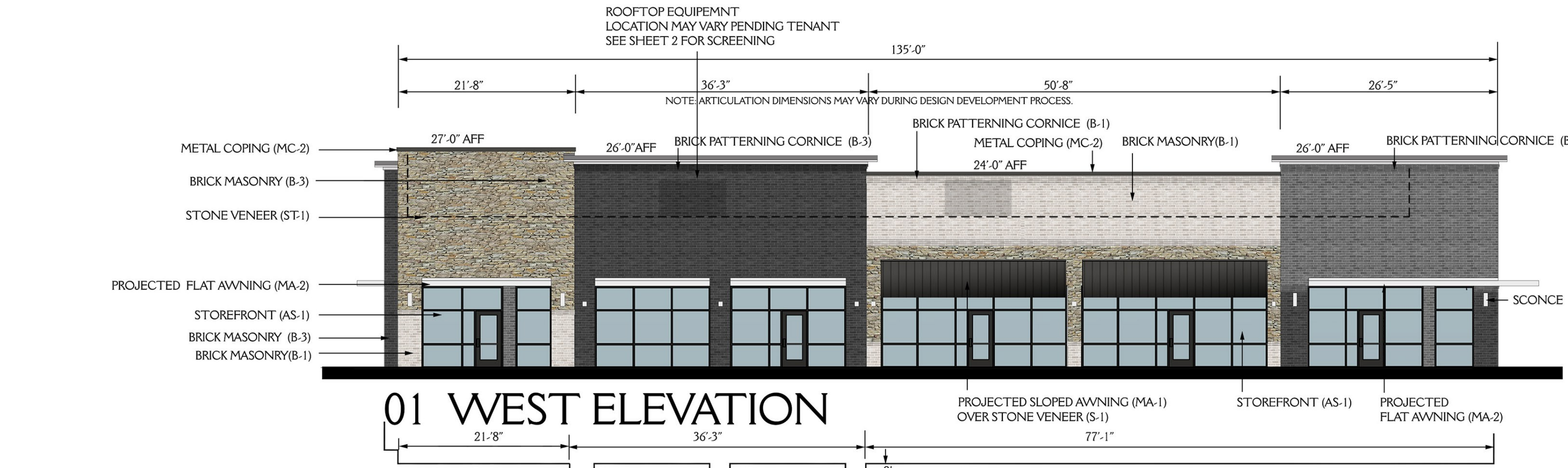
MATERIALS

BRICK	
B-1	Acme Brick Color: Silver Creek, Size: king
B-2	Acme Brick Color: Augusta, Size: king
B-3	Acme Brick/Yankee Hill Color: Capitol Ironspot, Finish: Velour, Size: King
STONE	
S-1	Mezger Enterprises Lueders Limestone Color: Buff Split-face, Size/Pattern: random chopped, mortar set ledgestone
PAINT	
P-1	Sherwin Williams SW7017 Dorian Gray (cornice)
P-2	Sherwin Williams SW7030 Anew Gray (coordinate with B-1)
P-3	Sherwin Williams SW7019 Gauntlet Gray (coordinate with B-2)
P-4	Sherwin Williams SW7069 Iron Ore (coordinate with B-3)
P-5	Sherwin Williams SW7067 Cityscape (MA-2 frames)
P-6	Sherwin Williams SW6993 Black of Night (MA-1 frames)
METAL COPING	
MC-1	Berridge Manufacturing Company / Color: Charcoal
MC-2	Berridge Manufacturing Company / Color: Matte Black
METAL AWNING	
MA-1	Berridge Manufacturing Company / Color: Matte Black
MA-2	Berridge Manufacturing Company / Color: Leadcote
PREFINISHED METAL	
PM-1	Berridge Manufacturing Company Color: Charcoal
ALUMINUM STOREFRONT SYSTEM	
AS-1	Black Anodized

Materials and colors subject to change based on availability. Substituted color to remain in a similar color palette.

GENERAL NOTES:

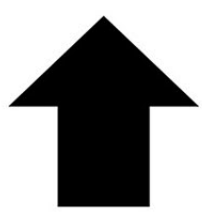
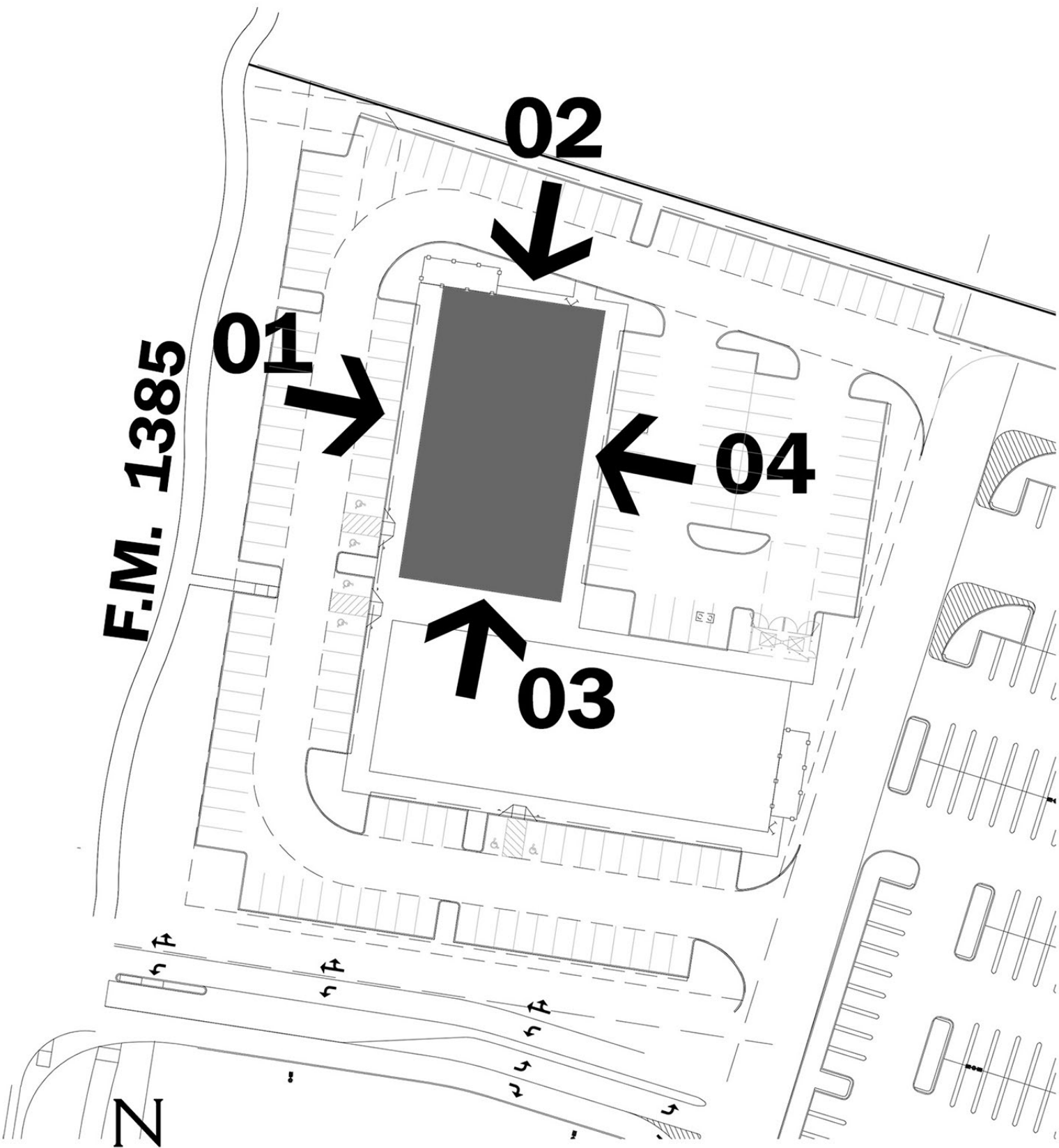
- This Façade Plan is for conceptual purposes only. All building plans require review and approval from the Building Inspections Division.
- All mechanical equipment shall be screened from public view. Rooftop mounted equipment shall be screened by a parapet wall or screening wall. Screening walls shall be the specifications of the Zoning Ordinance.
- When permitted, exposed utility boxes and conduits shall be painted to match the building.
- All signage areas and locations are subject to approval by the Building Inspections Division.
- Windows shall have a maximum exterior visible reflectivity of ten (10) percent.
- Any deviation from the approved Façade Plan will require re-approval by the Town of Prosper.



SITE



UNIVERSITY DRIVE (US 380)
SITE AREA KEY



ELEVATION SITE KEY

FACADE PLAN
WESTSIDE ADDITION
BLOCK A, LOT 18R
SITUATED IN THE J. GONZALES SURVEY, ABSTRACT NO. 447
IN THE TOWN OF PROSPER, DENTON COUNTY, TEXAS
139,235 Sq.Ft. / 3.196 Acres
Current Zoning: PD-94
Town Case No. DEVAPP-24-0136
Prepared March 2025

RETAIL A
LOT 18 R

Designs & materials shown are preliminary to express design intent only, and are subject to change. Final design will be based upon actual building configuration, colors and material availability

north of US380 and FM1385

WESTSIDE PROSPER TEXAS

scale: 3/32" = 1'-0" when printed 24 x 36



ARCHITECT
Hodges Architecture PLLC
13642 Omega Road
Dallas, Texas 75244
Telephone: (972) 387-1000
Contact: Gerald Luecke

OWNER / APPLICANT
SSSS Holdings LLC
8668 John Hickman Parkway
Suite 907
Frisco, Texas 75034
Telephone (248) 345-3818
Contact: Shiva Kondru

ENGINEER / SURVEYOR
Splars Engineering, Inc.
765 Custer Road, Suite 100
Plano, TX 75075
Telephone: (972) 422-0077
TBPELS No. F-2121 and No. F-10043100
Contact: Karis Smith

MATERIALS AND CALCULATIONS

WEST	SOUTH	EAST	NORTH
TOTAL FACADE: 1,828 SF DOORS/GLAZING: 593 SF NET FACADE: 1,233 SF 100% MASONRY (STONE): 316 SF 26% MASONRY (BRICK): 804 SF 65% TOTAL MASONRY: 91% AWNINGS AND CORNICE: 113 SF 9%	TOTAL FACADE: 4,667 SF DOORS/GLAZING: 1,529 SF NET FACADE: 3,138 SF 100% MASONRY (STONE): 640 SF 20% MASONRY (BRICK): 2,228 SF 65% TOTAL MASONRY: 85% AWNINGS AND CORNICE: 470 SF 15%	TOTAL FACADE: 1,703 SF DOORS/GLAZING: 460 SF NET FACADE: 1,243 SF 100% MASONRY (STONE): 239 SF 17% MASONRY (BRICK): 829 SF 67% TOTAL MASONRY: 84% AWNINGS AND CORNICE: 175 SF 14%	TOTAL FACADE: 4,352 SF DOORS/GLAZING: 320 SF NET FACADE: 4,032 SF 100% MASONRY (STONE): 830 SF 21% MASONRY (BRICK): 2,597 SF 64% TOTAL MASONRY: 85% AWNINGS AND CORNICE: 605 SF 15%

TOTAL FACADE: 12,550 SF
TOTAL DOORS/GLAZING: 2,904 SF
NET FACADE: 9,646 SF 100%

TOTAL MASONRY: 8,283 SF 86%
TOTAL AWNINGS AND CORNICE : 1,363 SF 14%

GENERAL NOTES:

- This Façade Plan is for conceptual purposes only. All building plans require review and approval from the Building Inspections Division.
- All mechanical equipment shall be screened from public view. Rooftop mounted equipment shall be screened by a parapet wall or screening wall. Screening walls shall be the specifications of the Zoning Ordinance.
- When permitted, exposed utility boxes and conduits shall be painted to match the building.
- All signage areas and locations are subject to approval by the Building Inspections Division.
- Windows shall have a maximum exterior visible reflectivity of ten (10) percent.
- Any deviation from the approved Façade Plan will require re-approval by the Town of Prosper.

MATERIALS

BRICK
B-1 Acme Brick
Color: Silver Creek, Size: king
B-2 Acme Brick
Color: Augusta, Size: king
B-3 Acme Brick/Yankee Hill
Color: Capitol Ironspot, Finish: Velour, Size: King

STONE
S-1 Mezger Enterprises
Lueders Limestone Color: Buff Split-face,
Size/Pattern: random chopped, mortar set ledgerstone

PAINT
P-1 Sherwin Williams SW7017 Dorian Gray (cornice)
P-2 Sherwin Williams SW7030 Anew Gray (coordinate with B-1)
P-3 Sherwin Williams SW7019 Gauntlet Gray (coordinate with B-2)
P-4 Sherwin Williams SW7069 Iron Ore (coordinate with B-3)
P-5 Sherwin Williams SW7067 Cityscape (MA-2 frames)
P-6 Sherwin Williams SW6993 Black of Night (MA-1 frames)

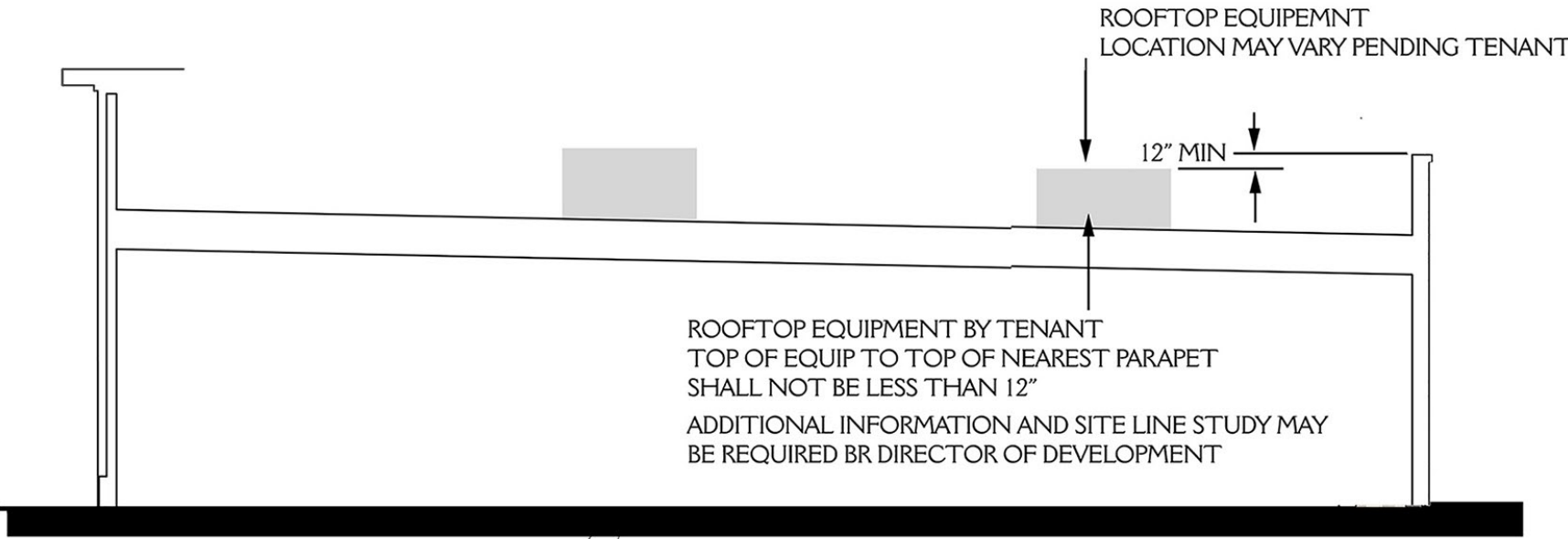
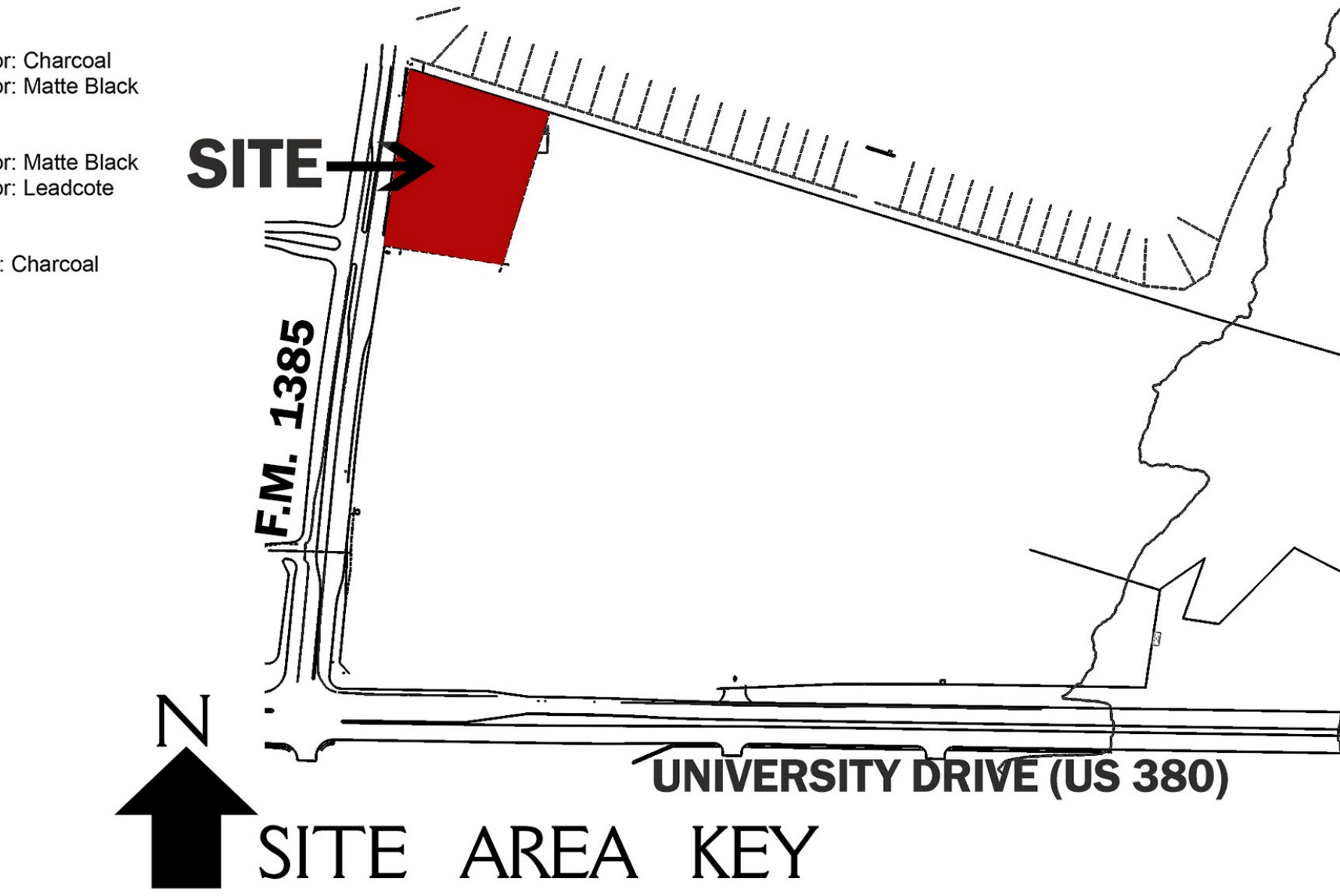
Materials and colors subject to change based on availability. Substituted color to remain in a similar color palette.

METAL COPING
MC-1 Berridge Manufacturing Company / Color: Charcoal
MC-2 Berridge Manufacturing Company / Color: Matte Black

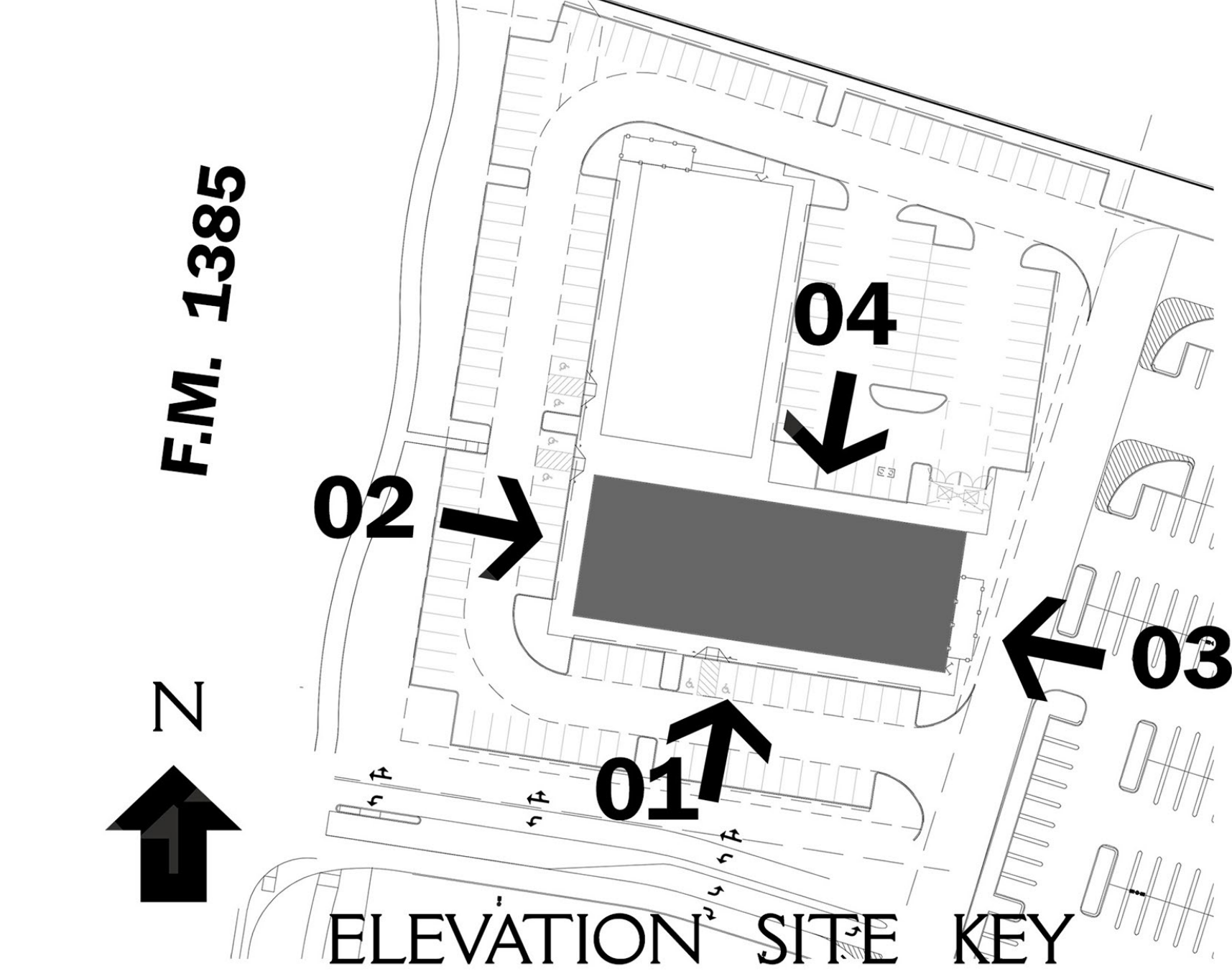
METAL AWNING
MA-1 Berridge Manufacturing Company / Color: Matte Black
MA-2 Berridge Manufacturing Company / Color: Leadcote

PREFINISHED METAL
PM-1 Berridge Manufacturing Company Color: Charcoal

ALUMINUM STOREFRONT SYSTEM
AS-1 Black Anodized



ROOFTOP SCREENING



ELEVATION SITE KEY

FACADE PLAN

WESTSIDE ADDITION

BLOCK A, LOT 18R
SITUATED IN THE J. GONZALES SURVEY, ABSTRACT NO. 447
IN THE TOWN OF PROSPER, DENTON COUNTY, TEXAS
139,235 Sq.Ft. / 3.196 Acres
Current Zoning: PD-94
Town Case No. DEVAPP-24-0136
Prepared March 2025



RETAIL B
LOT 18 R

Designs & materials shown are preliminary to express design intent only, and are subject to change. Final design will be based upon actual building configuration, colors and material availability

north of US380 and FM1385

WESTSIDE PROSPER TEXAS

scale: 3/32" = 1'-0" when printed 24 x 36