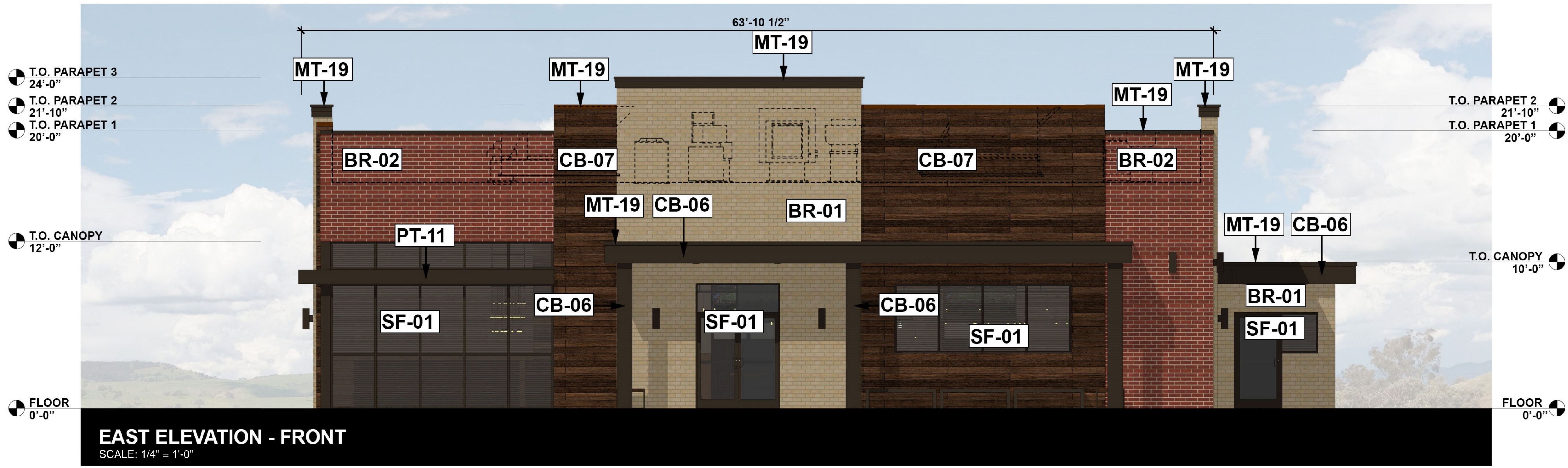


GENERAL NOTES

1. THIS FACADE PLAN IS FOR CONCEPTUAL PURPOSES ONLY. ALL BUILDING PLANS REQUIRE REVIEW AND APPROVAL FROM THE BUILDING INSPECTIONS DIVISION.
2. ALL MECHANICAL EQUIPMENT SHALL BE SCREENED FROM PUBLIC VIEW. ROOFTOP MOUNTED EQUIPMENT SHALL BE SCREENED BY A PARAPET WALL OR SCREENING WALL. SCREENING WALLS SHALL BE THE SPECIFICATIONS OF THE ZONING ORDINANCE.
3. WHEN PERMITTED, EXPOSED UTILITY BOXES AND CONDUITS SHALL BE PAINTED TO MATCH THE BUILDING.
4. ALL SIGNAGE AREAS AND LOCATIONS ARE SUBJECT TO APPROVAL BY THE BUILDING INSPECTIONS DIVISION.
5. WINDOWS SHALL HAVE A MAXIMUM EXTERIOR VISIBLE REFLECTIVITY OF TEN (10) PERCENT.
6. ANY DEVIATION FROM THE APPROVED FACADE PLAN WILL REQUIRE RE-APPROVAL BY THE TOWN OF PROSPER.

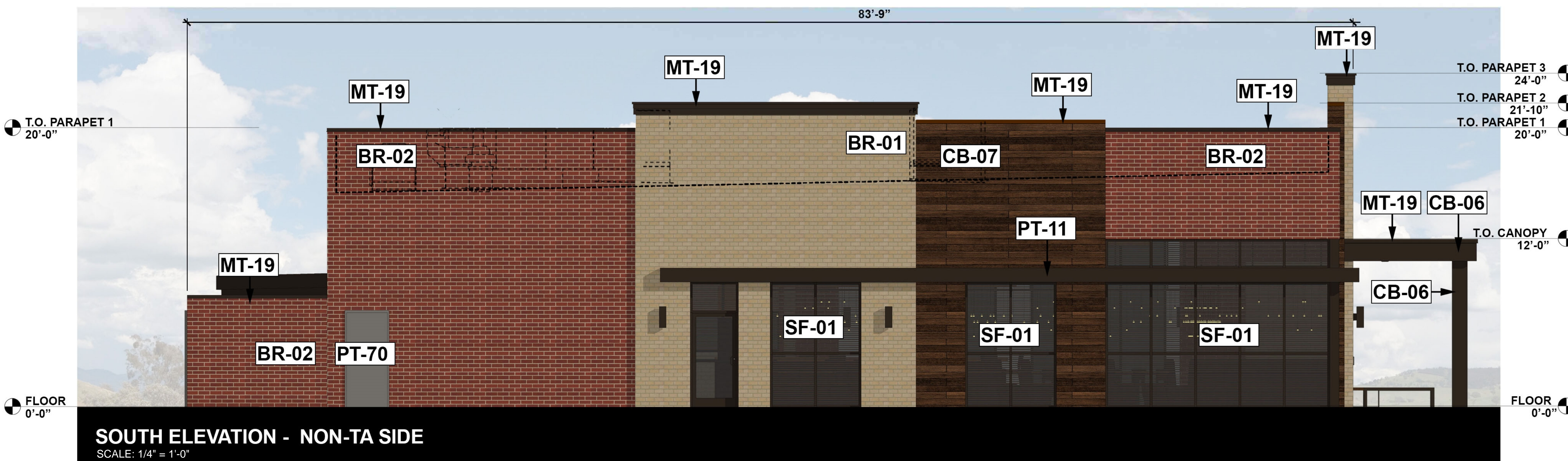
EXTERIOR FINISH SCHEDULE

MASONRY		
TYPE	REMARKS	
BR-01	CULTURED STONE VENEER SYSTEM MANUFACTURER: ENDICOTT STYLE: IVORY BLEND, VELOUR TEXTURE, MODULAR SIZE GROUT: LATITRETE #60 DUSTY GREY, OR EQUAL CONTACT: DOUG MCCALL: (813)482-8526; Doug.McCall@edcastle.com	
BR-02	CULTURED STONE VENEER SYSTEM MANUFACTURER: ENDICOTT STYLE: RUBY RED, VELOUR TEXTURE, MODULAR SIZE GROUT: LATITRETE #60 DUSTY GREY, OR EQUAL CONTACT: DOUG MCCALL: (813)482-8526; Doug.McCall@edcastle.com	
EXTERIOR PAINT		
PT	COLOR NUMBER	BRAND
PT-11	TURKISH COFFEE	SW 6076 SHERWIN WILLIAMS
PT-69	DOUBLE LATTE	SW 9108 SHERWIN WILLIAMS, STO COLOR: 1422-0002 (CEILING OF COVERED WAITING AREA)
PT-70	GAUNTLET GRAY	SW 7019 SHERWIN WILLIAMS
ALUMINUM BRAKE METAL		
MT-19	METAL COPING COLOR: COPPER BROWN MANUFACTURER: BERRIDGE	
MT-20	1 1/2" GALVANIZED METAL DECKING, 22 GA COLOR: PT-70	
STOREFRONT		
SF-01	ALUMINUM STOREFRONT COLOR: DARK BRONZE	
FIBER CEMENT SIDING		
CB-06	FIBER CEMENT SIDING COLOR: PRIMED FOR PAINTING (PT-11) HARDIPANEL SELECT CEDARMILL MANUFACTURER: JAMES HARDIE CONTACT: (888) 716-8744; RUBEN.GARCIA@JAMESHARDIE.COM	
CB-07	FIBER CEMENT SIDING COLOR: ROLU-GRAIN, ESPRESSO # ANP30-30 MANUFACTURER: NICHHA USA, INC CONTACT: (770) 855-8466	



EAST ELEVATION - FRONT
SCALE: 1/4" = 1'-0"

FRONT ELEVATION	
TOTAL SURFACE AREA	1381 SQ. FT.
DOOR AND WINDOW SURFACE AREA	329 SQ. FT.
NET SURFACE AREA	1321 SQ. FT.
% OF BRICK	938 SQ. FT. (71%)
% OF NICHHA	383 SQ. FT. (29%)



SOUTH ELEVATION - NON-TAKE AWAY SIDE
SCALE: 1/4" = 1'-0"

NON-TAKE AWAY SIDE ELEVATION	
TOTAL SURFACE AREA	1538 SQ. FT.
DOOR AND WINDOW SURFACE AREA	349 SQ. FT.
NET SURFACE AREA	1189 SQ. FT.
% OF BRICK	987 SQ. FT. (83%)
% OF NICHHA	202 SQ. FT. (17%)



BLOOMING BRANDS
OUTBACK STEAKHOUSE
JOEY PROTOTYPE - 2023.1 RELEASE
STORE #4472
GATES OF PROSPER
PHASE 1, BLOCK A, LOT 4
PROSPER, TX 75078

SHEET ISSUE:
06/19/2023 SITE PLAN SUBMITTAL
07/18/2023 SITE PLAN RESUBMITTAL

Approved by Town Council on ____ of ____, 20__

PRINCIPAL IN CHARGE: RO
PROJECT ARCHITECT: MS
DRAWN BY: PC
SHEET TITLE:
EXTERIOR ELEVATIONS
DEVAPP-23-0129

SHEET NO. PROJ. NO.
2022231.11

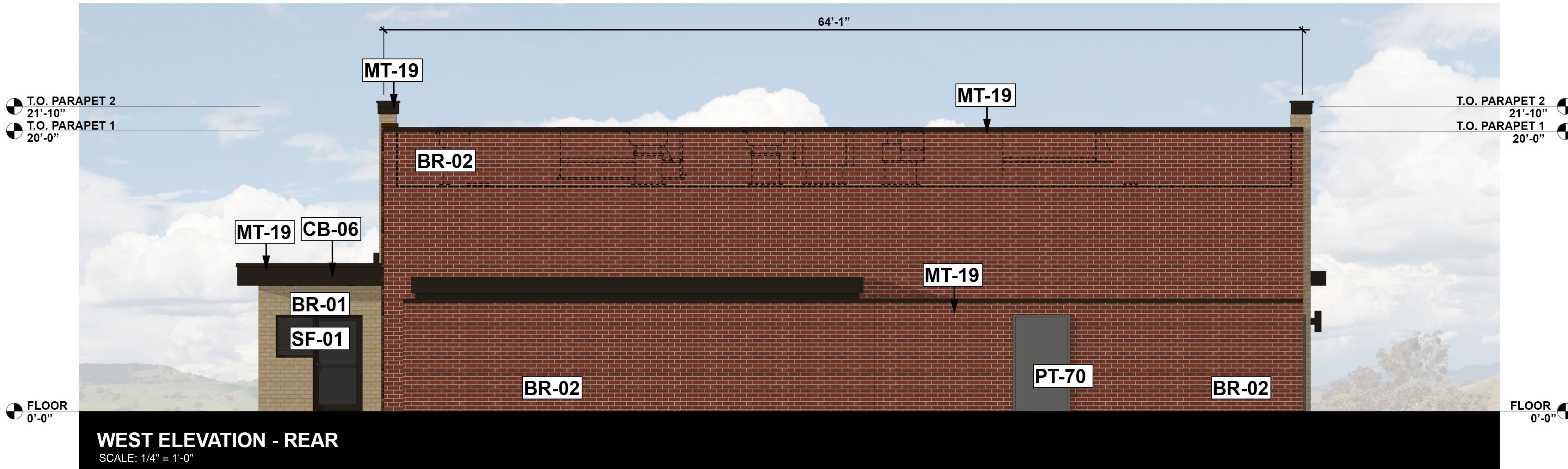
A300

GENERAL NOTES

1. THIS FACADE PLAN IS FOR CONCEPTUAL PURPOSES ONLY. ALL BUILDING PLANS REQUIRE REVIEW AND APPROVAL FROM THE BUILDING INSPECTIONS DIVISION.
2. ALL MECHANICAL EQUIPMENT SHALL BE SCREENED FROM PUBLIC VIEW. ROOFTOP MOUNTED EQUIPMENT SHALL BE SCREENED BY A PARAPET WALL OR SCREENING WALL. SCREENING WALLS SHALL BE THE SPECIFICATIONS OF THE ZONING ORDINANCE.
3. WHEN PERMITTED, EXPOSED UTILITY BOXES AND CONDUITS SHALL BE PAINTED TO MATCH THE BUILDING.
4. ALL SIGNAGE AREAS AND LOCATIONS ARE SUBJECT TO APPROVAL BY THE BUILDING INSPECTIONS DIVISION.
5. WINDOWS SHALL HAVE A MAXIMUM EXTERIOR VISIBLE REFLECTIVITY OF TEN (10) PERCENT.
6. ANY DEVIATION FROM THE APPROVED FACADE PLAN WILL REQUIRE RE-APPROVAL BY THE TOWN OF PROSPER.

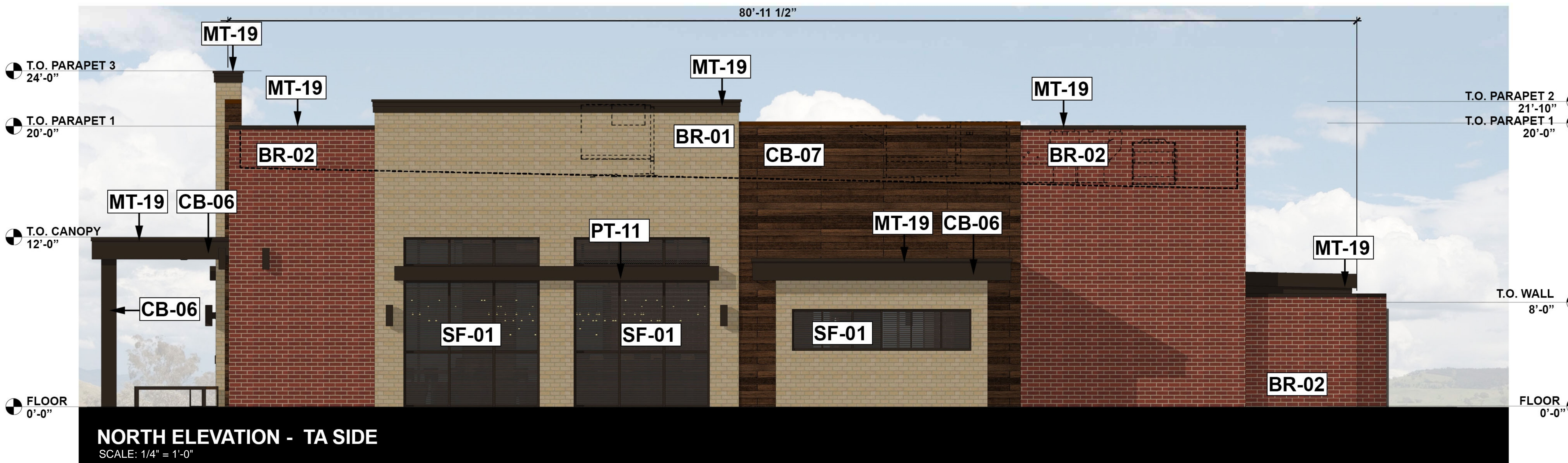
EXTERIOR FINISH SCHEDULE

MASONRY		
TYPE	REMARKS	
BR-01	CULTURED STONE VENEER SYSTEM MANUFACTURER: ENDICOTT STYLE: IVORY BLEND, VELOUR TEXTURE, MODULAR SIZE GROUT LAYOUT: #8 DUSTY GREY, OR SOUL CONTACT: DOUG MCCALL; (813)482-8526; Doug.McCall@outback.com	
BR-02	CULTURED STONE VENEER SYSTEM MANUFACTURER: ENDICOTT STYLE: RUBY RED, VELOUR TEXTURE, MODULAR SIZE GROUT LAYOUT: #8 DUSTY GREY, OR SOUL CONTACT: DOUG MCCALL; (813)482-8526; Doug.McCall@outback.com	
EXTERIOR PAINT		
PT-11	COLOR NUMBER	BRAND
PT-11	SW 6076	SHERWIN WILLIAMS
PT-69	SW 9108	SHERWIN WILLIAMS, STO COLOR: 1A22-0002 (CEILING OF COVERED WAITING AREA)
PT-70	SW 7019	SHERWIN WILLIAMS
ALUMINUM BRAKE METAL		
MT-19	METAL COPING COLOR: COPPER BROWN MANUFACTURER: BERTRIDGE	
MT-20	1 1/2" GALVANIZED METAL DECKING, 22 GA COLOR: PT-70	
STOREFRONT		
SF-01	ALUMINUM STOREFRONT COLOR: DARK BRONZE	
FIBER CEMENT SIDING		
CB-06	FIBER CEMENT SIDING COLOR: PRIMED FOR PAINTING (PT-11) HARDIEPANEL SELECT CEDARMILL MANUFACTURER: JAMES HARDIE CONTACT: (888) 716-8744; RUBEN.GARCIA@JAMESHARDIE.COM	
CB-07	FIBER CEMENT SIDING COLOR: ROUNG-SAWN, ESPRESSO # AWP30-30 MANUFACTURER: NICHHA USA, INC CONTACT: (770) 855-9466	



WEST ELEVATION - REAR
SCALE: 1/4" = 1'-0"

REAR ELEVATION	
TOTAL SURFACE AREA	1390 SQ. FT.
DOOR AND WINDOW SURFACE AREA	63 SQ. FT.
NET SURFACE AREA	1321 SQ. FT.
% OF BRICK	1321 SQ. FT. (100%)
% OF NICHIHA	N/A



NORTH ELEVATION - TA SIDE
SCALE: 1/4" = 1'-0"

TAKE AWAY SIDE ELEVATION	
TOTAL SURFACE AREA	1574 SQ. FT.
DOOR AND WINDOW SURFACE AREA	238 SQ. FT.
NET SURFACE AREA	1336 SQ. FT.
% OF BRICK	1122 SQ. FT. (84%)
% OF NICHIHA	214 SQ. FT. (16%)



BLOOMIN' BRANDS
OUTBACK STEAKHOUSE
JOEY PROTOTYPE - 2023.1 RELEASE
STORE #4472
GATES OF PROSPER
PHASE 1, BLOCK A, LOT 4
PROSPER, TX 75078

SHEET ISSUE:
06/19/2023 SITE PLAN SUBMITTAL
07/18/2023 SITE PLAN RESUBMITTAL

Approved by Town Council on ____ of ____, 20__

PRINCIPAL IN CHARGE: RO
PROJECT ARCHITECT: MS
DRAWN BY: PC

SHEET TITLE:
EXTERIOR ELEVATIONS
DEVAPP-23-0129

SHEET NO. PROJ. NO.
2022231.11

A301

GENERAL NOTES

1. THIS FACADE PLAN IS FOR CONCEPTUAL PURPOSES ONLY. ALL BUILDING PLANS REQUIRE REVIEW AND APPROVAL FROM THE BUILDING INSPECTIONS DIVISION.
2. ALL MECHANICAL EQUIPMENT SHALL BE SCREENED FROM PUBLIC VIEW. ROOFTOP MOUNTED EQUIPMENT SHALL BE SCREENED BY A PARAPET WALL OR SCREENING WALL. SCREENING WALLS SHALL BE THE SPECIFICATIONS OF THE ZONING ORDINANCE.
3. WHEN PERMITTED, EXPOSED UTILITY BOXES AND CONDUITS SHALL BE PAINTED TO MATCH THE BUILDING.
4. ALL SIGNAGE AREAS AND LOCATIONS ARE SUBJECT TO APPROVAL BY THE BUILDING INSPECTIONS DIVISION.
5. WINDOWS SHALL HAVE A MAXIMUM EXTERIOR VISIBLE REFLECTIVITY OF TEN (10) PERCENT.
6. ANY DEVIATION FROM THE APPROVED FACADE PLAN WILL REQUIRE RE-APPROVAL BY THE TOWN OF PROSPER.

EXTERIOR FINISH SCHEDULE

MASONRY		
TYPE	REMARKS	
BR-01	CULTURED STONE VENEER SYSTEM MANUFACTURER: ENDICOTT STYLE: IVORY BLEND, VELOUR TEXTURE, MODULAR SIZE GROUT: LATIKRETE #80 DUSTY GREY, OR EQUAL CONTACT: DOUG MCCALL; (813)482-8526; Doug.McCall@edcastle.com	
BR-02	CULTURED STONE VENEER SYSTEM MANUFACTURER: ENDICOTT STYLE: RUBY RED, VELOUR TEXTURE, MODULAR SIZE GROUT: LATIKRETE #80 DUSTY GREY, OR EQUAL CONTACT: DOUG MCCALL; (813)482-8526; Doug.McCall@edcastle.com	
EXTERIOR PAINT		
PT	COLOR NUMBER	BRAND
PT-11	SW 6078	SHERWIN WILLIAMS
PT-69	SW 9108	SHERWIN WILLIAMS, STD COLOR: 1A22-0002 (CEILING OF COVERED WAITING AREA)
PT-70	SW 7019	SHERWIN WILLIAMS
ALUMINUM BRAKE METAL		
MT-19	METAL COPING COLOR: COPPER BROWN MANUFACTURER: BERRIDGE	
MT-20	1 1/2" GALVANIZED METAL DECKING, 22 GA COLOR: PT-70	
STOREFRONT		
SF-01	ALUMINUM STOREFRONT COLOR: DARK BRONZE	
FIBER CEMENT SIDING		
CB-06	FIBER CEMENT SIDING COLOR: PRIMED FOR PAINTING (PT-11) HARDIPANEL SELECT CEDARMILL MANUFACTURER: JAMES HARDIE CONTACT: (888) 716-8744; RUBEN.GARCIA@JAMESHARDIE.COM	
CB-07	FIBER CEMENT SIDING COLOR: ROUGH-SAWN, ESPRESSO # ANV930-30 MANUFACTURER: NICHHA USA, INC CONTACT: (770) 855-8466	



SOUTH ELEVATION - FRONT
SCALE: 1/4" = 1'-0"

EAST ELEVATION - SIDE
SCALE: 1/4" = 1'-0"



NORTH ELEVATION - REAR
SCALE: 1/4" = 1'-0"

WEST ELEVATION - SIDE
SCALE: 1/4" = 1'-0"



BLOOMIN' BRANDS
OUTBACK STEAKHOUSE
JOEY PROTOTYPE - 2023.1 RELEASE
STORE #4472
GATES OF PROSPER
PHASE 1, BLOCK A, LOT 4
PROSPER, TX 75078

SHEET ISSUE:
06/19/2023 SITE PLAN SUBMITTAL
07/18/2023 SITE PLAN RESUBMITTAL

Approved by Town Council on ____ of ____, 20__

PRINCIPAL IN CHARGE: RO
PROJECT ARCHITECT: MS
DRAWN BY: PC
SHEET TITLE:
DUMPSTER ENCLOSURE ELEVATIONS
DEVAPP-23-0129
SHEET NO. PROJ. NO. 2022231.11

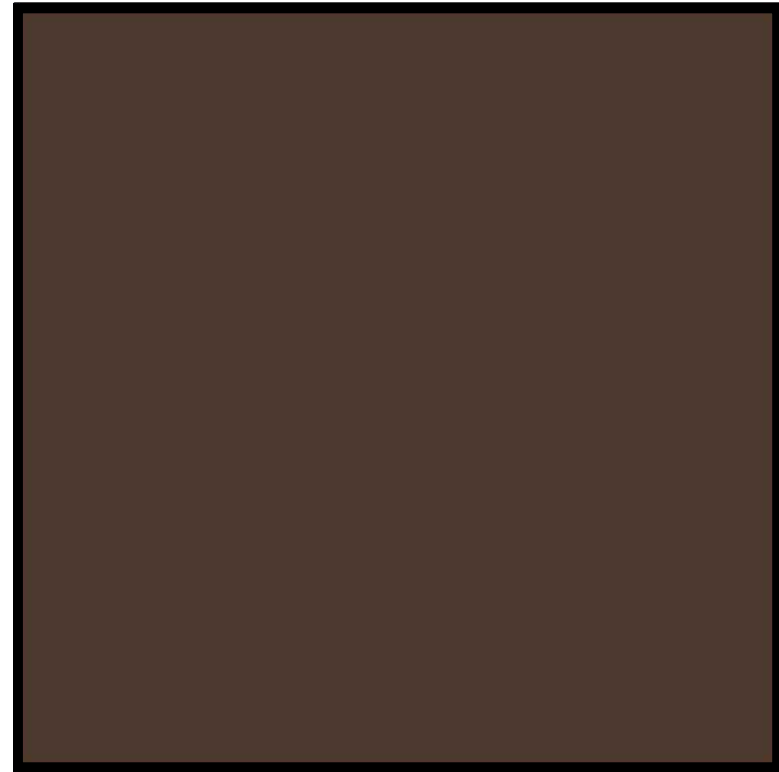
A302



EXTERIOR MATERIAL BOARD



PT-11
TURKISH COFFEE
SW6076
SHERWIN WILLIAMS
SEMI-GLOSS



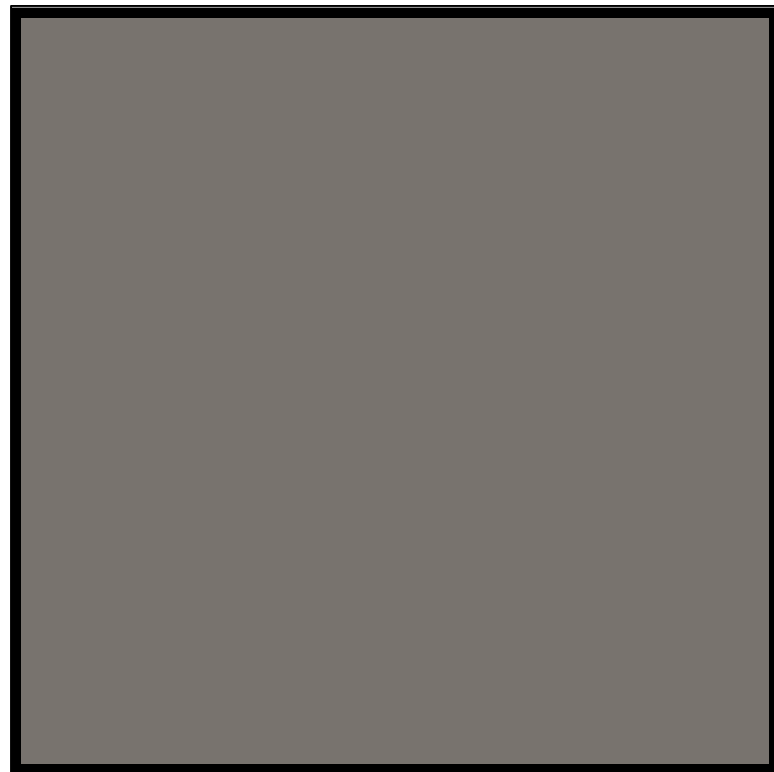
SF-01
STOREFRONT: DARK BRONZE



CB-06
FIBER CEMENT SIDING
PRIMED FOR PAINTING (PT-11)
HARDIEPANEL SELECT CEDARMILL
JAMES HARDIE



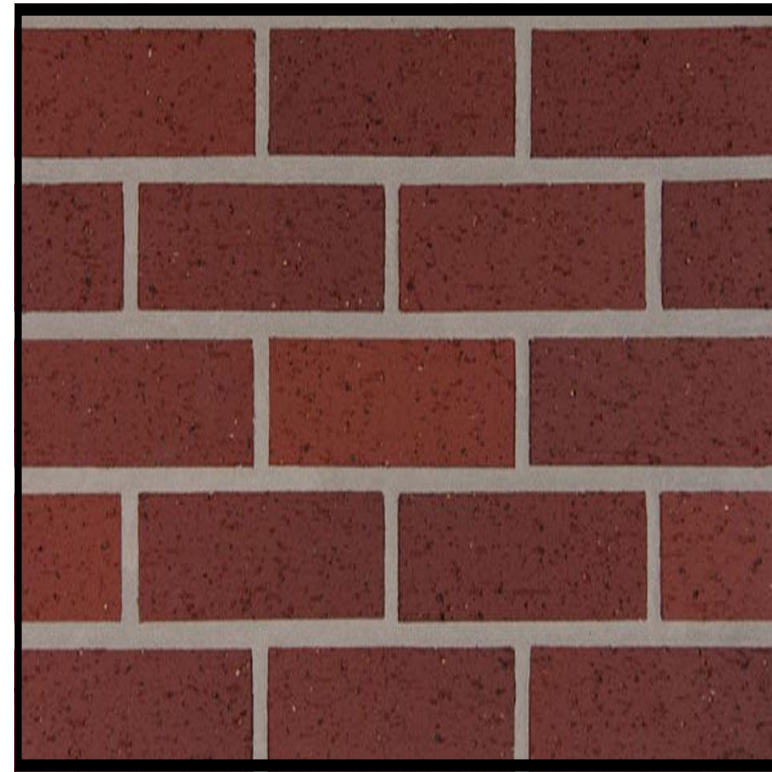
CB-07
FIBER CEMENT SIDING
ROUGH SAWN, ESPRESSO #AWP30-30
NICHHA USA, INC



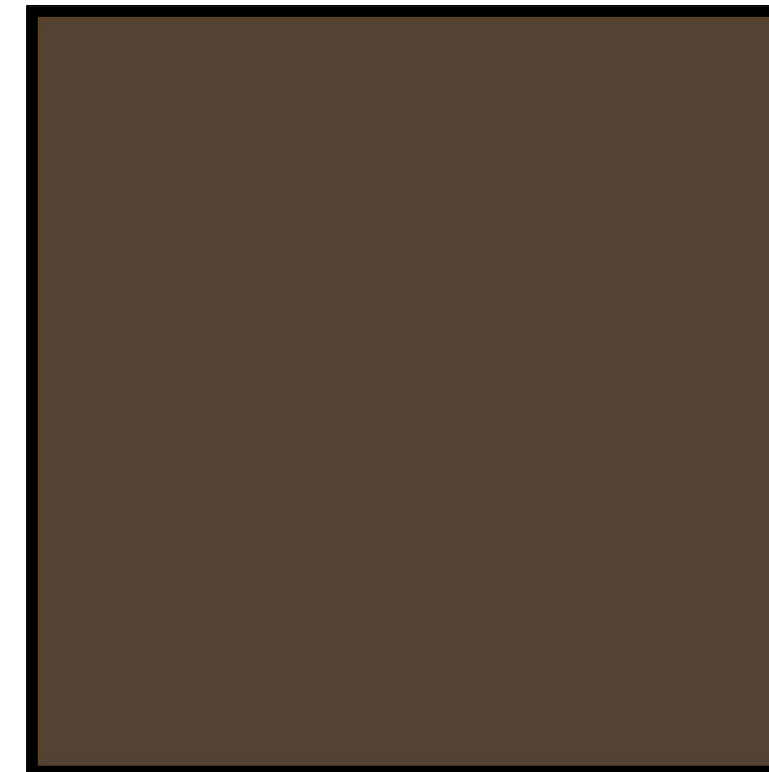
PT-70
GAUNLET GRAY
SW7019
SHERWIN WILLIAMS
SEMI-GLOSS



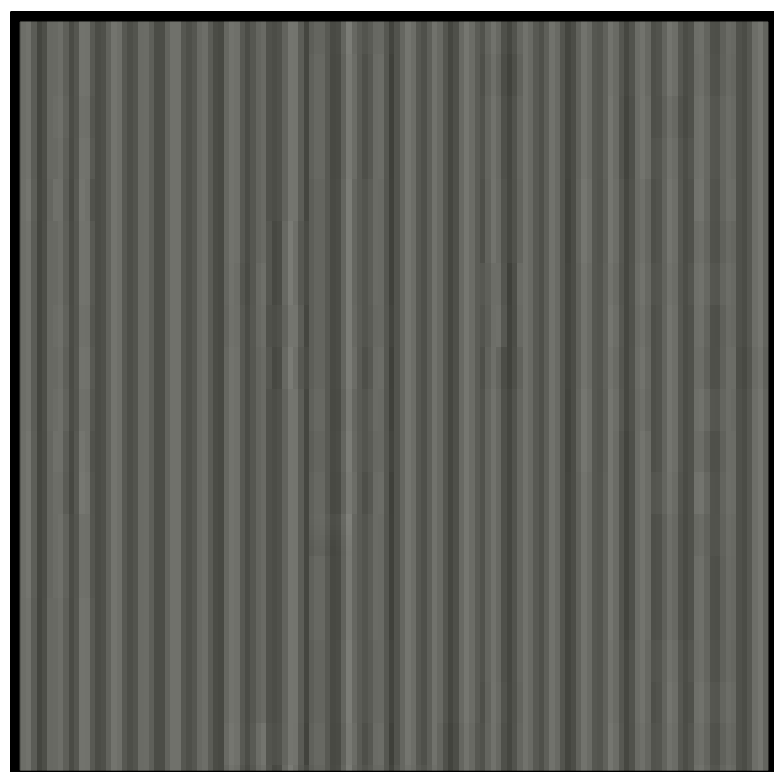
BR-01
VELOUR TEXTURE, MODULAR SIZE
ENDICOTT BRICK VENEER
COLOR: IVORY BLEND



BR-02
VELOUR TEXTURE, MODULAR SIZE
ENDICOTT BRICK VENEER
COLOR: RUBY RED



MT-19
METAL COPING
COPPER BROWN
BERRIDGE



MT-20
1-1/2" GALVANIZED METAL DECKING 22GA
COLOR: PT-70
SW 7019 - GAUNTLET GRAY - SEMI GLOSS
SHERWIN WILLIAMS

Approved by Town
Council on ____ of
_____, 20__