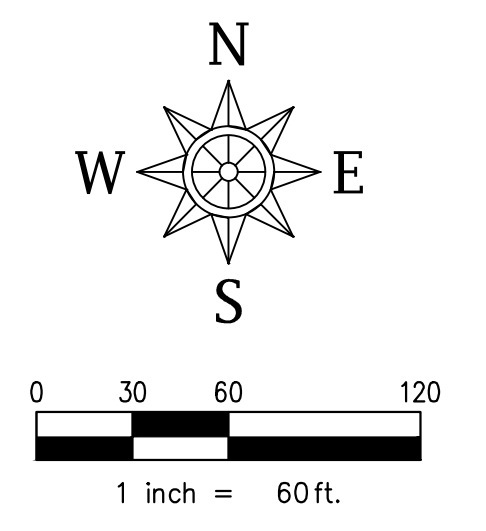
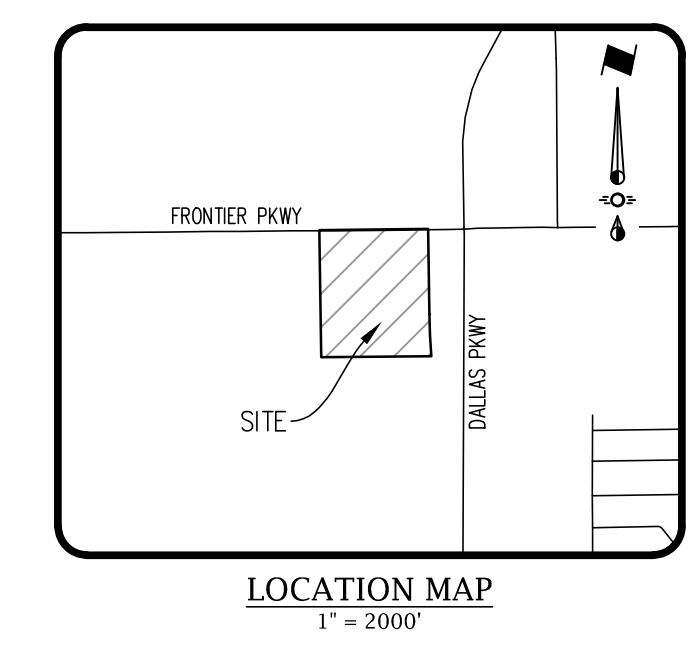


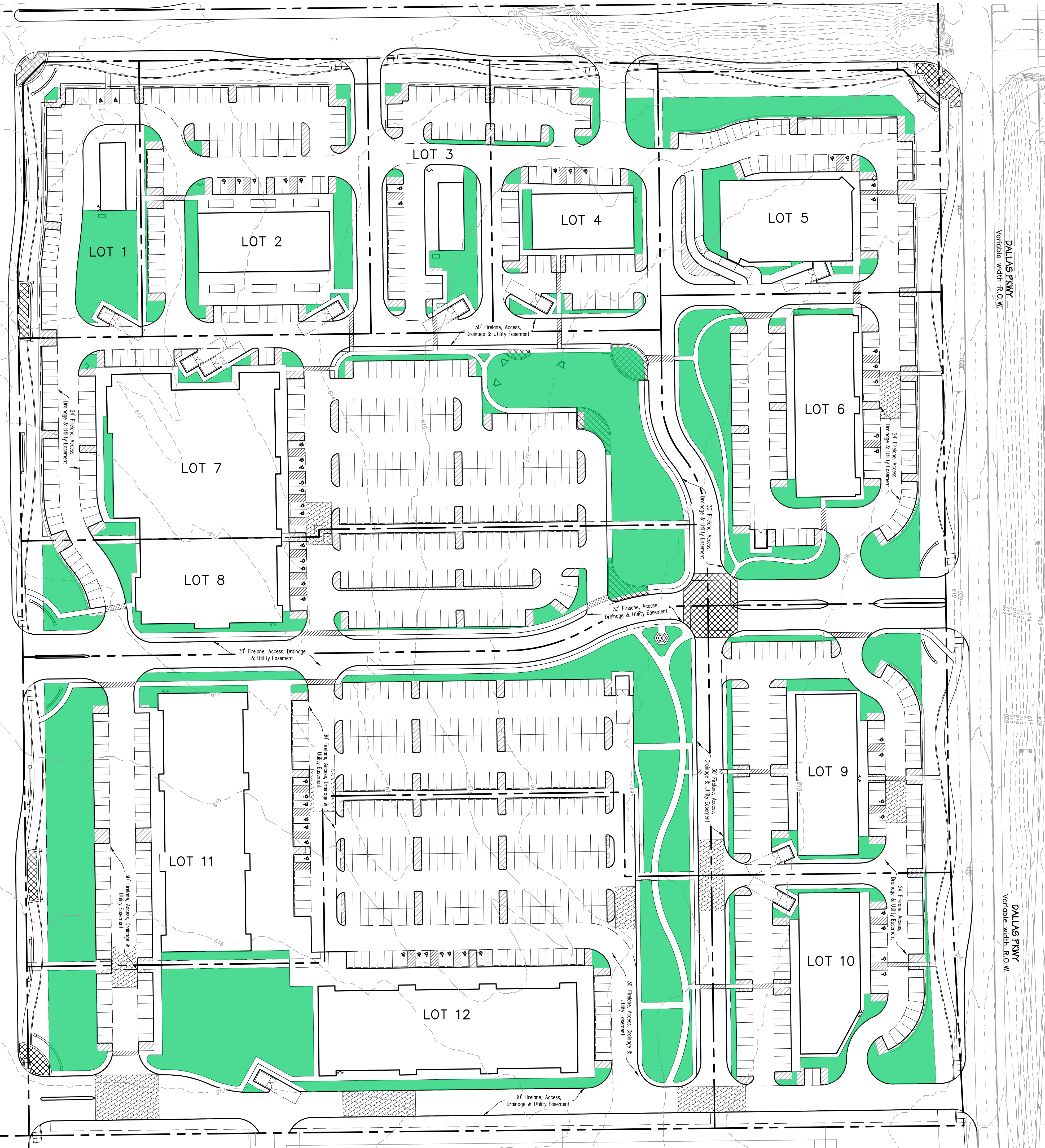
Drawn by: drowell, Date: 2/27/2026, 7:41 AM
 Called 221,617 Acres
 2/27/2026 7:41 AM
 D:\SPN-ESV-SEI\Jobs\2023_02\21-Frontier Gateway\CADD\Open Space\Drawings\221-Frontier Gateway\221-Frontier Gateway.dwg, Saved By: Drowell, Save Time: 2/25/2026



Site Data Summary Table												
	Lot 1	Lot 2	Lot 3	Lot 4	Lot 5	Lot 6	Lot 7	Lot 8	Lot 9	Lot 10	Lot 11	Lot 12
Lot Area (SF)	45,367	87,467	46,507	62,768	86,886	112,707	181,227	107,787	89,280	85,853	222,356	243,556
Required Parking Lot Landscaping (SF)	540	1,380	555	870	960	1,350	3,195	1,395	1,290	1,050	3,120	3,195
Provided Parking Lot Landscaping (SF)	786	1,056	16,499	2,537	2,994	2,688	4,957	3,031	2,309	2,512	4,094	3,860
Required Open Space (SF)	3,376	6,323	3,265	4,394	6,033	7,809	12,686	7,545	6,350	6,010	15,565	16,909
Provided Open Space (SF)	8,432	7,214	6,800	5,962	12,001	20,414	25,288	15,378	7,974	8,776	42,615	45,040
Total Impervious Area (SF)	27,482	69,587	22,078	48,540	55,814	78,116	141,695	81,951	69,451	62,455	163,310	177,892

LEGEND

- INTERIOR LANDSCAPE AREA PROVIDED
- OPEN SPACE PROVIDED



OPEN SPACE PLAN
FRONTIER GATEWAY
 BLOCK A, LOTS 1-11,
 IN THE TOWN OF PROSPER, COLLIN COUNTY, TEXAS
 SITUATED IN THE COLLIN COUNTY SCHOOL LAND SURVEY
 SECTION NO. 12, ABSTRACT NO. 147
 1,369,004 Net Sq.Ft. / 31.428 Net Acres
 1,505,293 Gross Sq.Ft. / 34.556 Gross Acres
 Current Zoning: C-Commercial
 Town Case No. : DEVAPP-24-0110
 Prepared May 2025

ENGINEER / SURVEYOR / APPLICANT Spiors Engineering, Inc. 501 W President George Bush Hwy, Suite 200 Richardson, TX 75080 Telephone: (972) 422-0077 TBPE No. F-2121 Contact: David Bond	OWNER/DEVELOPER Urban Heights 4577 Firewheel Dr Plano, TX 75024 Telephone: (248) 390-3400 Contact: Ravi Varlagadda
---	--