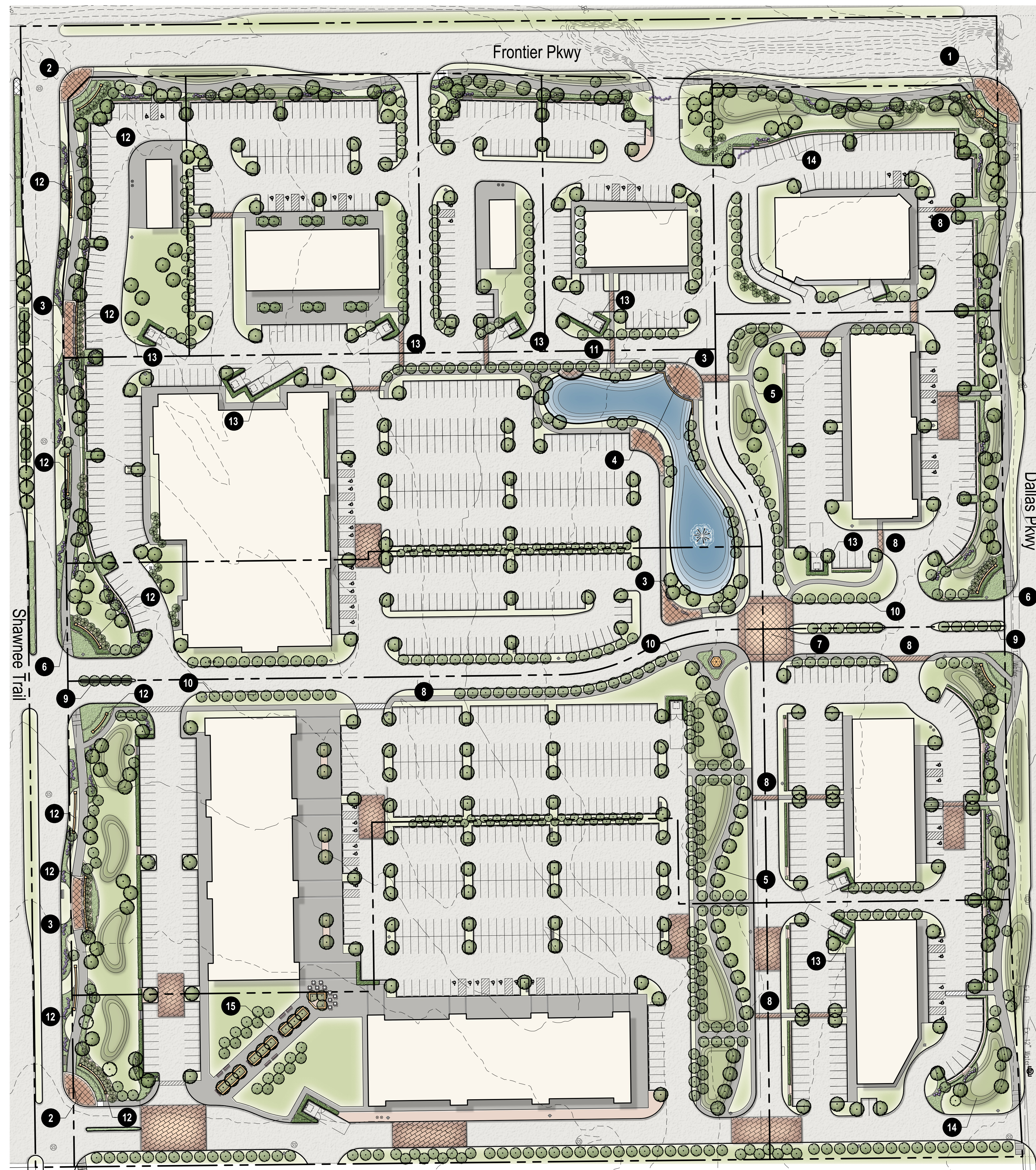


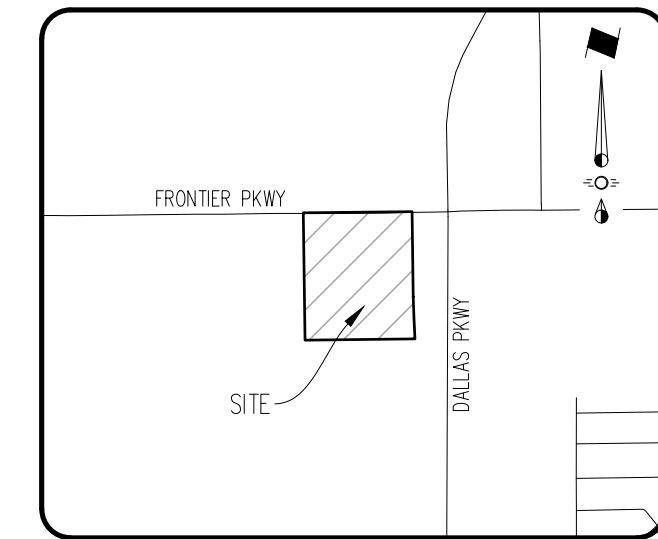
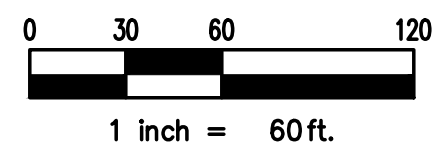
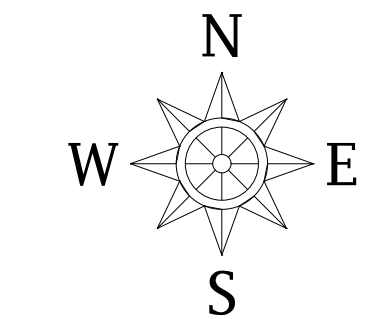
Plotted by: Importment-Plot Date: 3/10/2025 5:08 PM

Drawing: C:\2023\_0085\23-242\_Frontier\_Gateway\LANDSCAPE\CAD\Area\Area5.dwg Saved By: Importment - Save Time: 3/10/2025 5:07:15 PM



**Amenity and Landscape Features Key**

- 1 Lush layered planting with sculptural focal feature
- 2 Enriched Corner Plaza
- 3 Enriched Plaza with Integrated Seating
- 4 Amenitized Retention Pond with Overlooks and Seating
- 5 Curvilinear 10' Path with Sculptural Berms
- 6 Curvilinear 10' Path with Ornamental Plantings and Shade Trees
- 7 Elevated Intersection with Pedestrian Crosswalk
- 8 Enriched Pedestrian Crosswalk
- 9 Flowering Ornamental Entry Trees
- 10 Flowering Ornamental Trees Flanking Drive
- 11 Flowering Ornamental Grove
- 12 Lush Layered Plantings with Low Masonry Walls
- 13 Evergreen Dumpster Screening
- 14 Sculptural Berms
- 15 Allée with raised planters



LOCATION MAP  
1" = 2000'

**CONCEPTUAL LANDSCAPE PLAN**  
**FRONTIER GATEWAY**  
 BLOCK A, LOTS 1-11,  
 IN THE TOWN OF PROSPER, COLLIN COUNTY, TEXAS  
 SITUATED IN THE COLLIN COUNTY SCHOOL LAND SURVEY  
 SECTION NO. 12, ABSTRACT NO. 147  
 1,505,293 Gross Sq.Ft. / 31.543 Gross Acres  
 1,374,047 Net Sq.Ft. / 34.556 Net Acres  
 Current Zoning: C-Commercial  
 Town Case No. : DEVAPP-24-0110  
 Prepared July 2025

LANDSCAPE ARCHITECT  
 Spiers Engineering, Inc.  
 765 Custer Road, Suite 100  
 Plano, TX 75075  
 Telephone: (972) 422-0077  
 TBAE No. 2986  
 Contact: Anthony Stewart, RLA

ENGINEER / SURVEYOR / APPLICANT  
 Spiers Engineering, Inc.  
 501 W. President George Bush Hwy, Suite 200  
 Richardson, TX 75080  
 Telephone: (972) 422-0077  
 TBPE No. F-2121  
 Contact: David Bond

OWNER/DEVELOPER  
 Urban Heights  
 4577 Firewheel Dr  
 Plano, TX 75024  
 Telephone: (248) 390-3400  
 Contact: Ravi Yariagadda