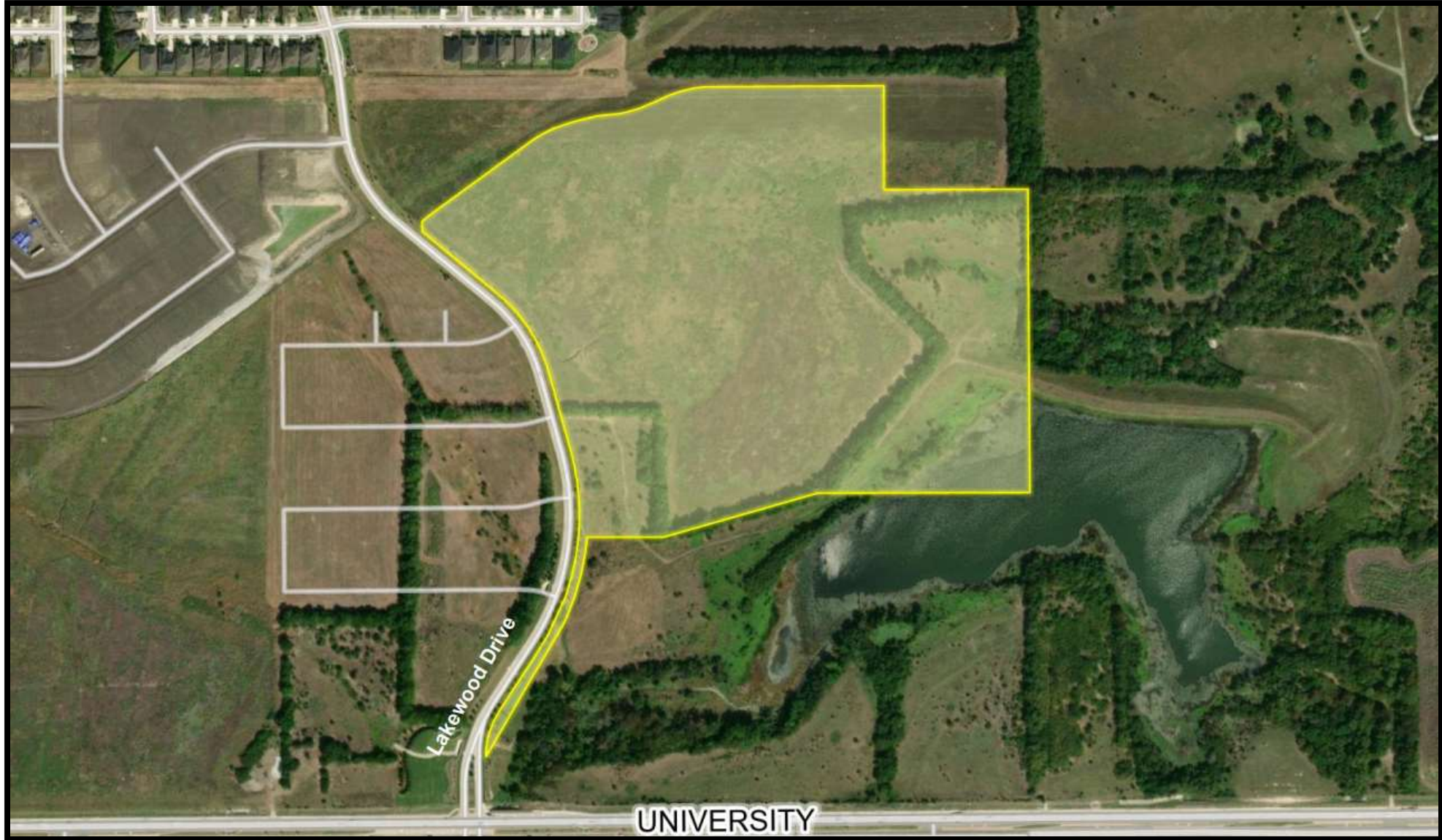
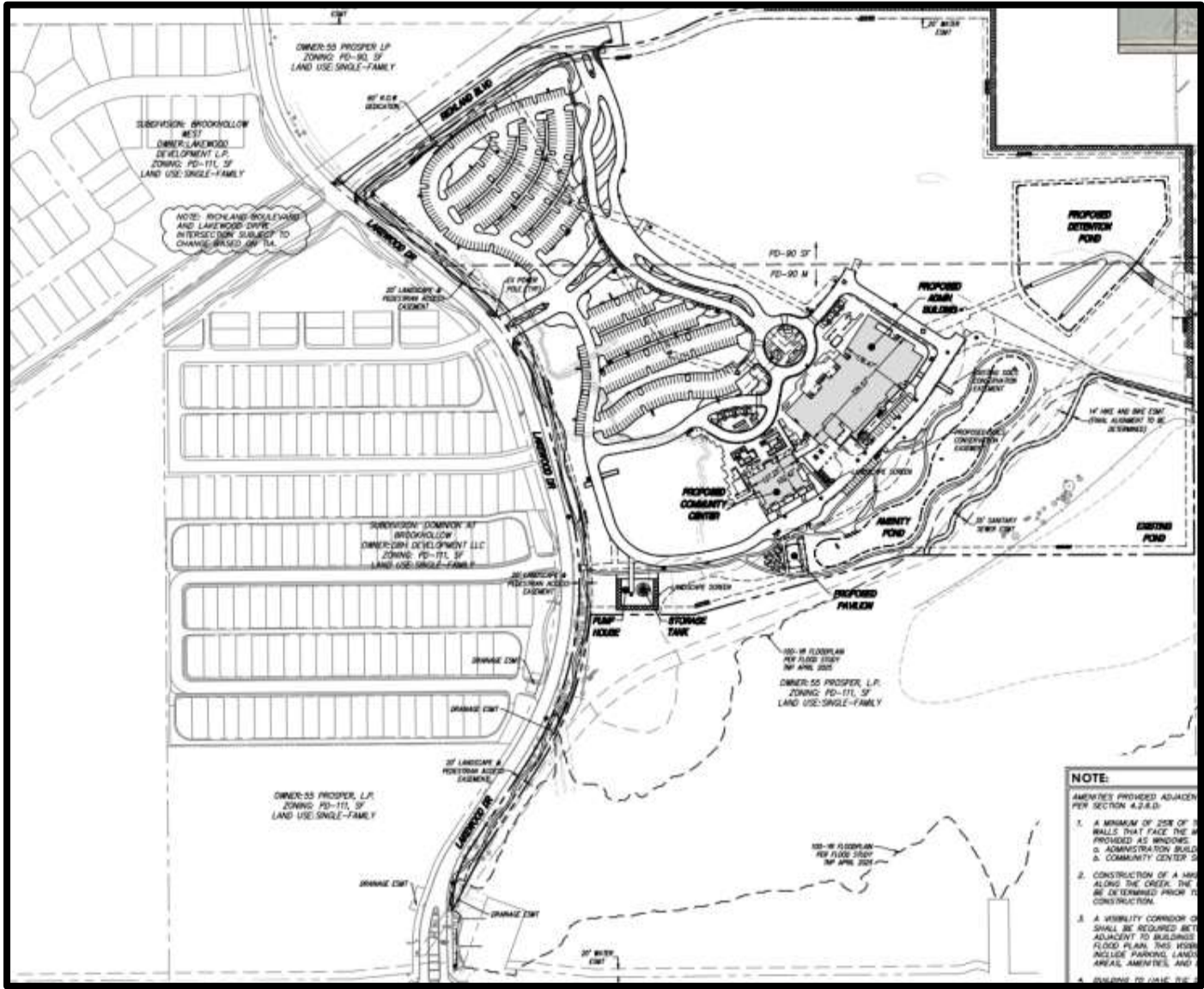


Prosper ISD  
Lakewood Campus,  
Block A, Lot 1  
(DEVAPP-25-0019)





# Information

## Purpose:

- Construct the first phase of a campus consisting of three buildings totaling 149,293 square feet.
  - Administration Building
  - Community Center
  - Pavillion

## History:

- A Preliminary Site Plan was approved 3-1 by the Planning & Zoning Commission on March 18, 2025.
  - Concern regarding location of pump house and storage tank.



# Information

## Hike & Bike Trail:

- Hike & Bike Trail Master Plan indicates provision of a trail circling the pond.
  - Portion of trail to be constructed on southeast corner of property.
  - Alignment of the trail easement to be finalized during construction and reflected on final plat.

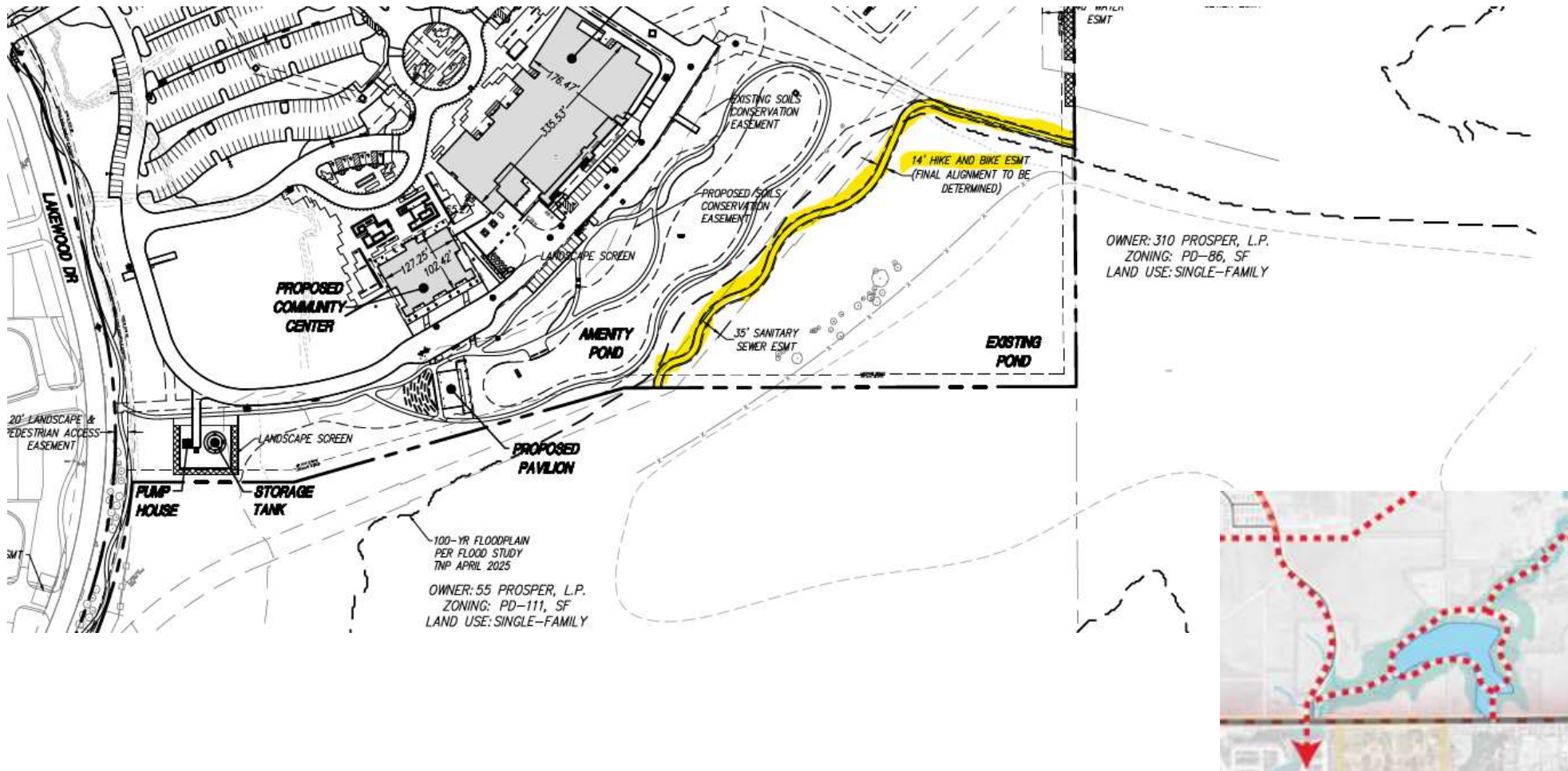
## Living Screen:

- Living screen shown on eastern property line adjacent to residential development.
  - Approved on Preliminary Site Plan (DEVAPP-24-0129)

# Information

## Major Creek Amenities:

- Hike & Bike Trail Master Plan indicates provision of a trail circling the pond.
  - Hike & Bike Trail (Adjacent to Creek)
  - Visibility Corridor (100' or More)
  - Similar Architectural Elements & Building Materials (All Four Sides)
  - Surface Area of Walls Facing Creek (25% Windows)



# Information

## Conditions of Approval:

- The Planning & Zoning Commission approved the item subject to the following conditions:
  - Relocation of storage tank and pump house, subject to approval by the Director of Development Services; and,
  - In accordance with the Preliminary Site Plan (DEVAPP-24-0129) condition of approval, a Traffic Impact Analysis for the overall development shall be approved prior to the release of construction for Richland Boulevard.







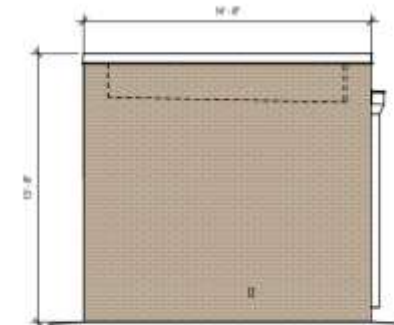
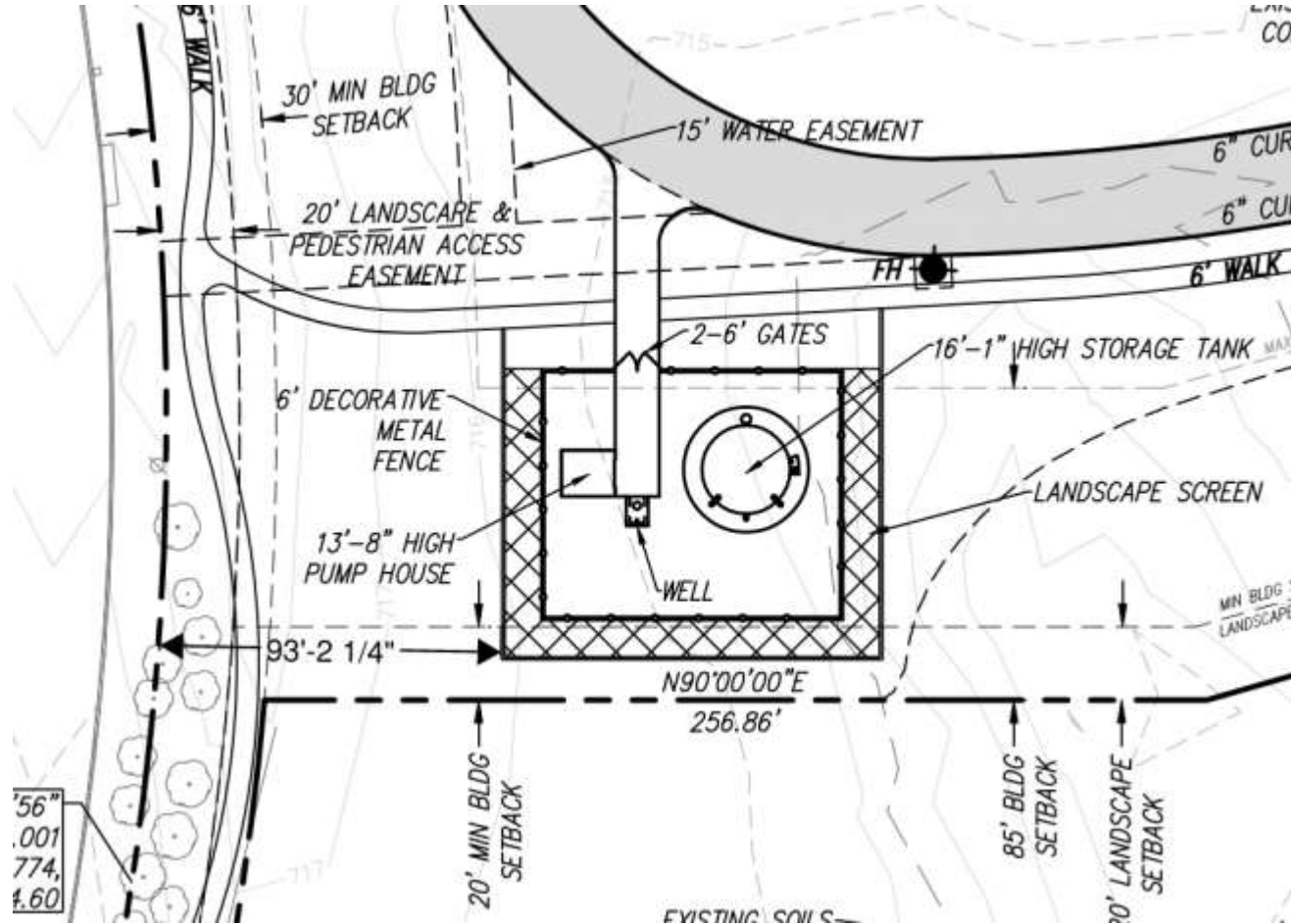




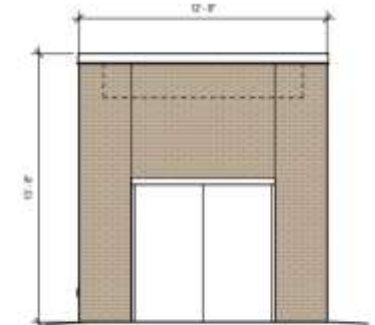




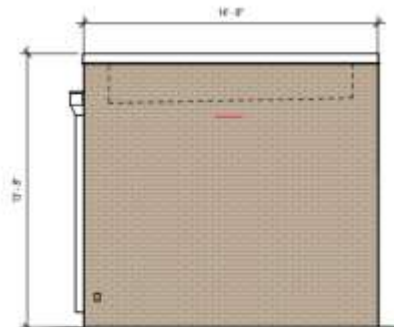




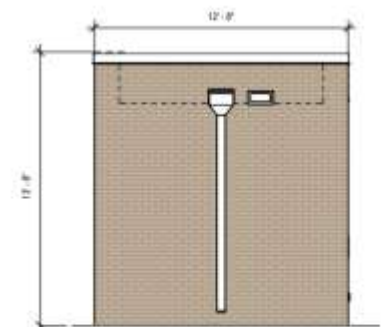
5 NORTH ELEVATION  
1/4" = 1'-0"



6 EAST ELEVATION  
1/4" = 1'-0"



7 SOUTH ELEVATION  
1/4" = 1'-0"



8 WEST ELEVATION  
1/4" = 1'-0"

