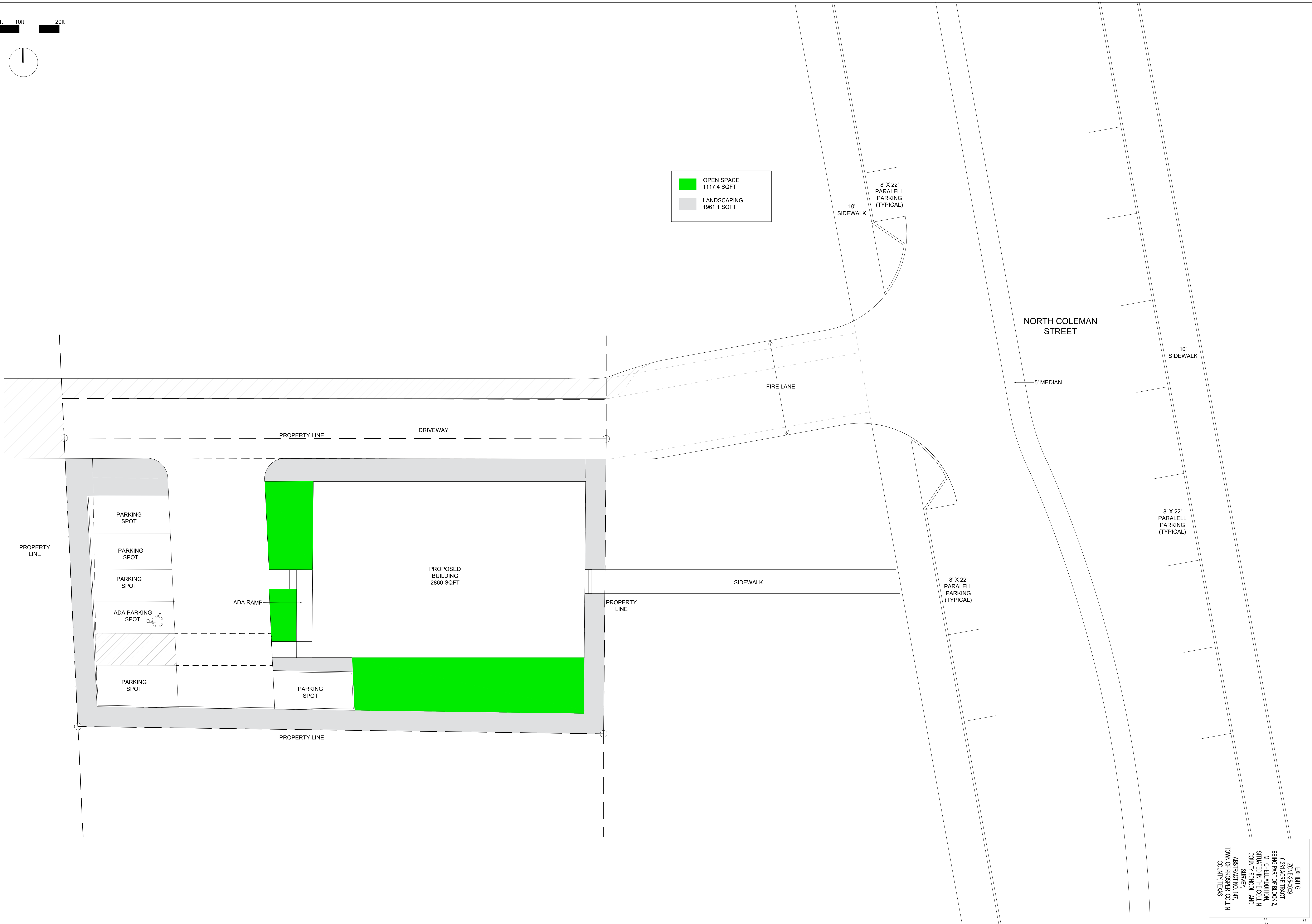


OPEN SPACE  
1117.4 SQFT  
 LANDSCAPING  
1961.1 SQFT



207 N Coleman St, Prosper, TX 75078

EXHIBIT G  
 ZONE: ZS-0009  
 0.231 ACRE TRACT  
 BEING PART OF BLOCK 2  
 MITCHELL ADDITION,  
 SITUATED IN THE COLLIN  
 COUNTY SCHOOL LAND  
 SURVEY,  
 ABSTRACT NO. 147,  
 TOWN OF PROSPER, COLLIN  
 COUNTY, TEXAS

DRAWING  
**OPEN SPACE PLAN**  
 DATE  
**FEBRUARY 2026**  
 SCALE  
**1" = 10'**