



# Information

## Purpose:

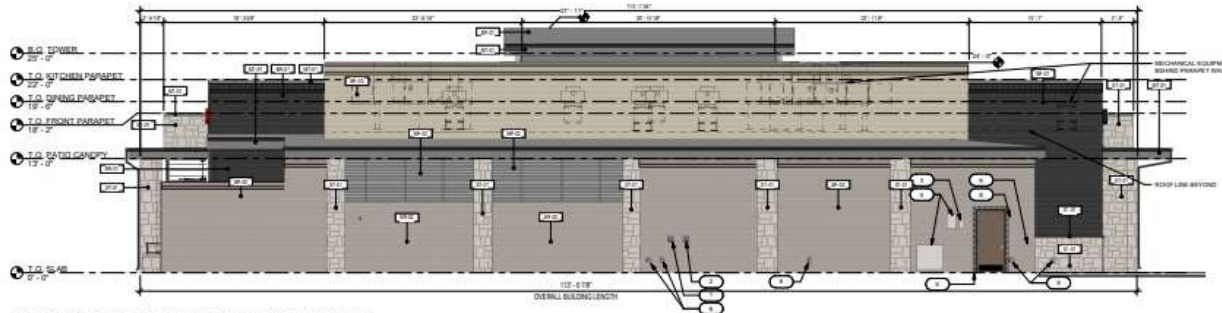
- Construct an 8,264 square foot restaurant with a 1,137 square foot outdoor patio.

## Conditions of Approval:

- Town Council approval of the Façade Plan.



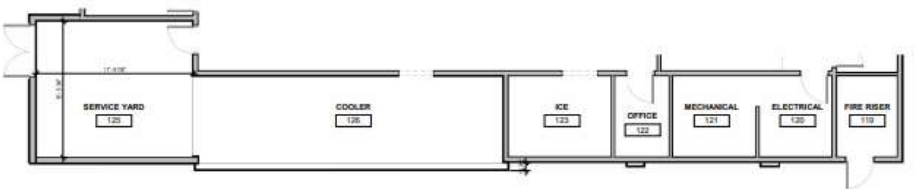




REAR ELEVATION GROSS SURFACE AREA		
MATERIAL TYPE	AREA	%GROSS
BR 01	222 SF	1%
BR 02	171 SF	0%
BR 03	222 SF	1%
BR 04	222 SF	1%
BR 05	222 SF	1%
BR 06	222 SF	1%
BR 07	222 SF	1%
BR 08	222 SF	1%
BR 09	222 SF	1%
BR 10	222 SF	1%
TOTAL	222 SF	100%

REAR ELEVATION NET SURFACE AREA		
MATERIAL TYPE	AREA	%NET
BR 01	222 SF	100%
BR 02	222 SF	100%
BR 03	222 SF	100%
BR 04	222 SF	100%
BR 05	222 SF	100%
BR 06	222 SF	100%
BR 07	222 SF	100%
BR 08	222 SF	100%
BR 09	222 SF	100%
BR 10	222 SF	100%
TOTAL	222 SF	100%

1 EXTERIOR - REAR ELEVATION - NORTHWEST  
SCALE: 3/8" = 1'-0"



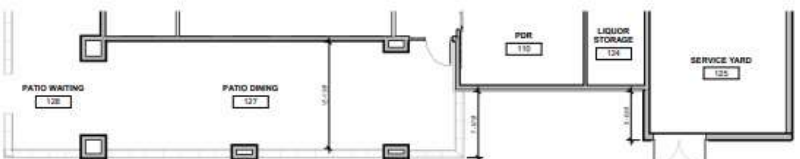
1.1 REAR PROJECTION PLAN  
SCALE: 3/8" = 1'-0"



RIGHT ELEVATION GROSS SURFACE AREA		
MATERIAL TYPE	AREA	%GROSS
BR 01	222 SF	1%
BR 02	171 SF	0%
BR 03	222 SF	1%
BR 04	222 SF	1%
BR 05	222 SF	1%
BR 06	222 SF	1%
BR 07	222 SF	1%
BR 08	222 SF	1%
BR 09	222 SF	1%
BR 10	222 SF	1%
TOTAL	222 SF	100%

RIGHT ELEVATION NET SURFACE AREA		
MATERIAL TYPE	AREA	%NET
BR 01	222 SF	100%
BR 02	222 SF	100%
BR 03	222 SF	100%
BR 04	222 SF	100%
BR 05	222 SF	100%
BR 06	222 SF	100%
BR 07	222 SF	100%
BR 08	222 SF	100%
BR 09	222 SF	100%
BR 10	222 SF	100%
TOTAL	222 SF	100%

2 EXTERIOR - RIGHT ELEVATION - NORTHEAST  
SCALE: 3/8" = 1'-0"



**PROJECT CONTACT INFORMATION**

**ARCHITECT:**  
CONSULTANT DESIGN AND DEVELOPMENT GROUP, LLC  
1000 COLLEGE DRIVE, SUITE 100  
PROSPER, TX 75081  
PHONE: 972.685.5200  
CONTACT: DAVID AYTHORP

**OWNER:**  
DOP #1, LLC  
1 COUNTRYWAY  
FRISCO, TEXAS 75034  
CONTACT: MICHAEL LAMB  
PHONE: 972.997.0000

**ENGINEER:** FRANK TITUS, INC.  
10000 WINDY HILL, SUITE 100  
DALLAS, TEXAS 75243  
PHONE: 972.997.0000  
CONTACT: KAPIL BHAMBANI, P.E.

**FAÇADE PLAN NOTES**

1. THIS FAÇADE PLAN IS FOR CONCEPTUAL PURPOSES ONLY. ALL BUILDING PLANS REQUIRE REVIEW AND APPROVAL FROM THE BUILDING INSPECTION DIVISION.
2. ALL MECHANICAL EQUIPMENT SHALL BE SCREENED FROM PUBLIC VIEW. ROOF OR RELATED EQUIPMENT SHALL BE SCREENED BY A PARAPET WALL OR SCREENING WALL. SCREENING WALLS SHALL BE THE SPECIFICATIONS OF THE OWNER'S ARCHITECT.
3. WORK PROHIBITED: EXPOSED UTILITY RISERS AND CONDENSATE DRAIN PIPING TO BE HIDDEN TO MATCH THE BUILDING.
4. ALL SCREENING AREAS AND LOCATIONS ARE SUBJECT TO APPROVAL BY THE BUILDING INSPECTION DIVISION.
5. WINDOWS SHALL HAVE A MINIMUM 60% VISIBLE TRANSMITTANCE (VTI) PERCENT.
6. ANY DEVIATIONS FROM THE APPROVED FAÇADE PLAN WILL REQUIRE RE-APPROVAL BY THE TOWN OF PROSPER.

**ABBREVIATIONS LEGEND**

- BRICK VENEER:**
- BR 01  
SBS: Material: Thin (2 1/8" x 7 1/8" x 1 1/2")  
SFR: Lightest Knottelough - Victorian  
SFR: Product: Manhattan Stone - Coal HT  
DIM: BR 01-A (2 1/8" x 7 1/8" x 1 1/2")
  - BR 02  
SBS: Material: Thin (2 1/8" x 7 1/8" x 1 1/2")  
SFR: Lightest Knottelough - Maris  
SFR: Product: Super Edge Vene Brick - 213  
DIM: BR 02-A (2 1/8" x 7 1/8" x 1 1/2")
  - BR 03  
SBS: Material: Thin (2 1/8" x 7 1/8" x 1 1/2")  
SFR: Lightest Knottelough - Maris  
SFR: Product: Super Edge Vene Brick - 213  
DIM: BR 03-A (2 1/8" x 7 1/8" x 1 1/2")
- STONE VENEER:**
- ST 01  
SBS: Product: Lightest Knottelough - UK  
SFR: Product: Thin Veneer Limestone Field Pattern  
DIM: ST 01-A (2 1/8" x 7 1/8" x 1 1/2")  
DIM: ST 01-B (2 1/8" x 7 1/8" x 1 1/2")
- METAL TRIM:**
- MT 01 (Division)  
SBS: Color: (to be determined on secondary)  
DIM: MT 01-A (2 1/8" x 7 1/8" x 1 1/2")  
SFR: Product: Thin Veneer Limestone Field Pattern  
DIM: MT 01-B (2 1/8" x 7 1/8" x 1 1/2")
- GROUT:**
- GR 01  
SFR: CASCO  
PRODUCT: Cement Color Matching Compound - Cream 100  
DIM: GR 01-A (2 1/8" x 7 1/8" x 1 1/2")  
DIM: GR 01-B (2 1/8" x 7 1/8" x 1 1/2")
  - GR 02  
SFR: CASCO  
PRODUCT: Cement Color Matching Compound - Mocha 100  
DIM: GR 02-A (2 1/8" x 7 1/8" x 1 1/2")  
DIM: GR 02-B (2 1/8" x 7 1/8" x 1 1/2")
- GLASS/SLIP FINISH:**
- GF 01  
SFR: DOWCOR  
PRODUCT: 1/4" Clear Glass with aluminum channels with a smooth finish, composite black finish  
DIM: GF 01-A (2 1/8" x 7 1/8" x 1 1/2")

**EXT. ELEVATIONS KEYNOTES**

1. OVERHEAD PLUMB POINT
2. GAS SERVICE POINT
3. WATER SERVICE POINT
4. SEWER SERVICE POINT
5. FIBER SERVICE POINT
6. AIR SERVICE POINT
7. AIR SERVICE POINT
8. AIR SERVICE POINT

