



Rutherford Park

The Town of Prosper's Next
Community Park Experience

Rutherford Park Plans and Amenities

Rutherford Park Plans

In response to growing demand in the Prosper region, the Town of Prosper, in partnership with the Prosper Independent School District, has plans to provide the Town and school district's growing population with a quality park, open space, and a Prosper ISD environmental education and learning center. This new park and education center will provide hike+bike trails, sports field(s), recreational playground, multiuse pavilion, programmable open space, and educational facility to the residents of this community who live and play in this region. The Town of Prosper is committed to providing a park system to complement the town's livability and quality of life. For more information about the Town of Prosper and Prosper ISD, see **Attachment 1**. Our parks and recreation system is a reflection of the community's long-held values and support for parkland, green space, and healthy lifestyles. This system of parks, trails, open spaces, environmental education facilities, and programs is a major contributor to Prosper's growing reputation, and the result of sustained community support, and investment.

Programmable Open Space, Hike and Bike Trails

The Town acquired fee simple ownership of 3.75 acres of parkland and approximately 2.3 acres of trail easements immediately adjacent to a large 15-acre pond. The Town intends to include the following elements into this new premiere park and educational space as reflected in **Exhibit 1**:

- 3.75 acres of programmable open space dedicated for park and recreation uses
- Athletic fields
- Playground with sunshade
- Trail kiosk & pavilion with seating
- 2.3+ acres of hike and bike trails with park connection

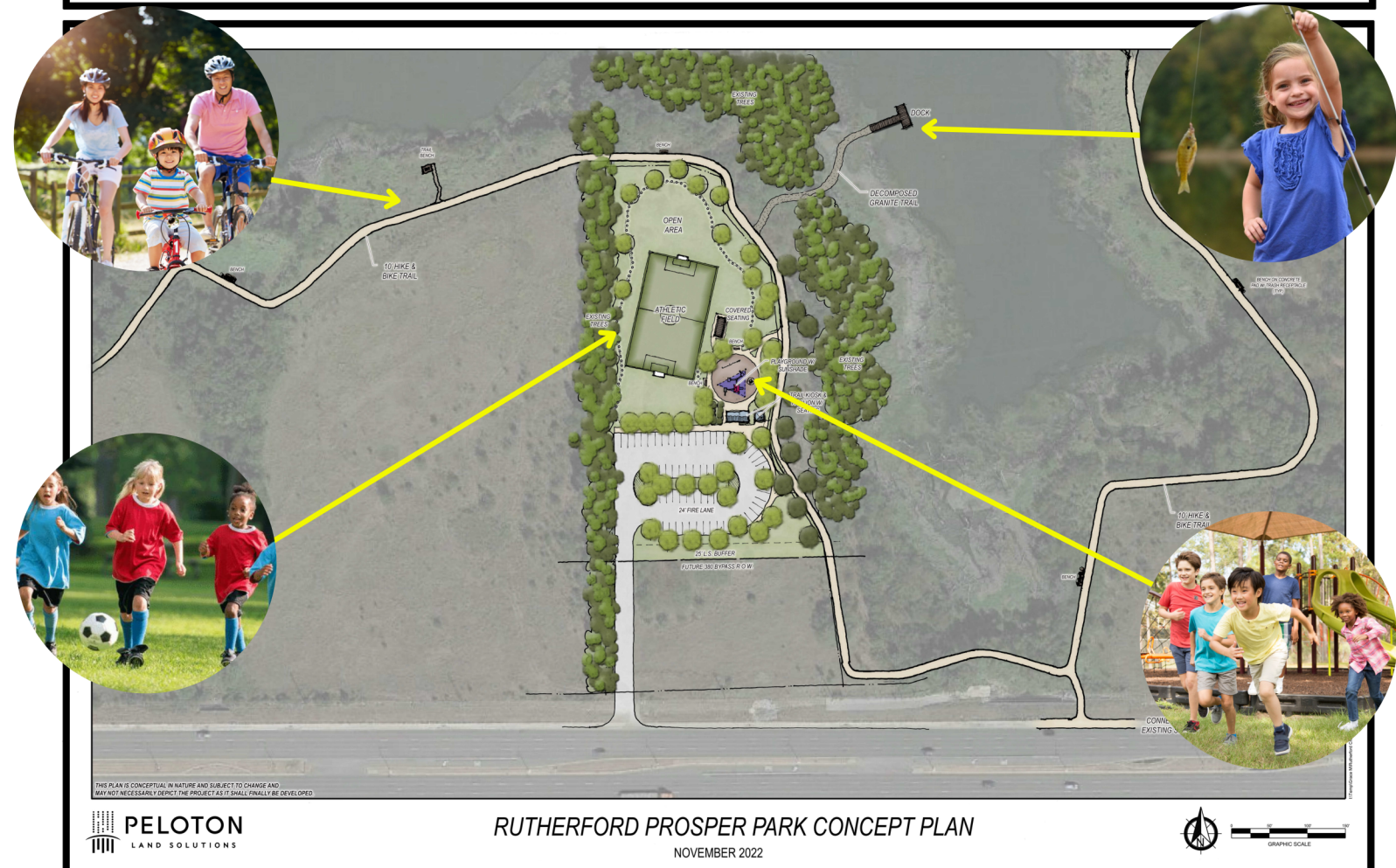
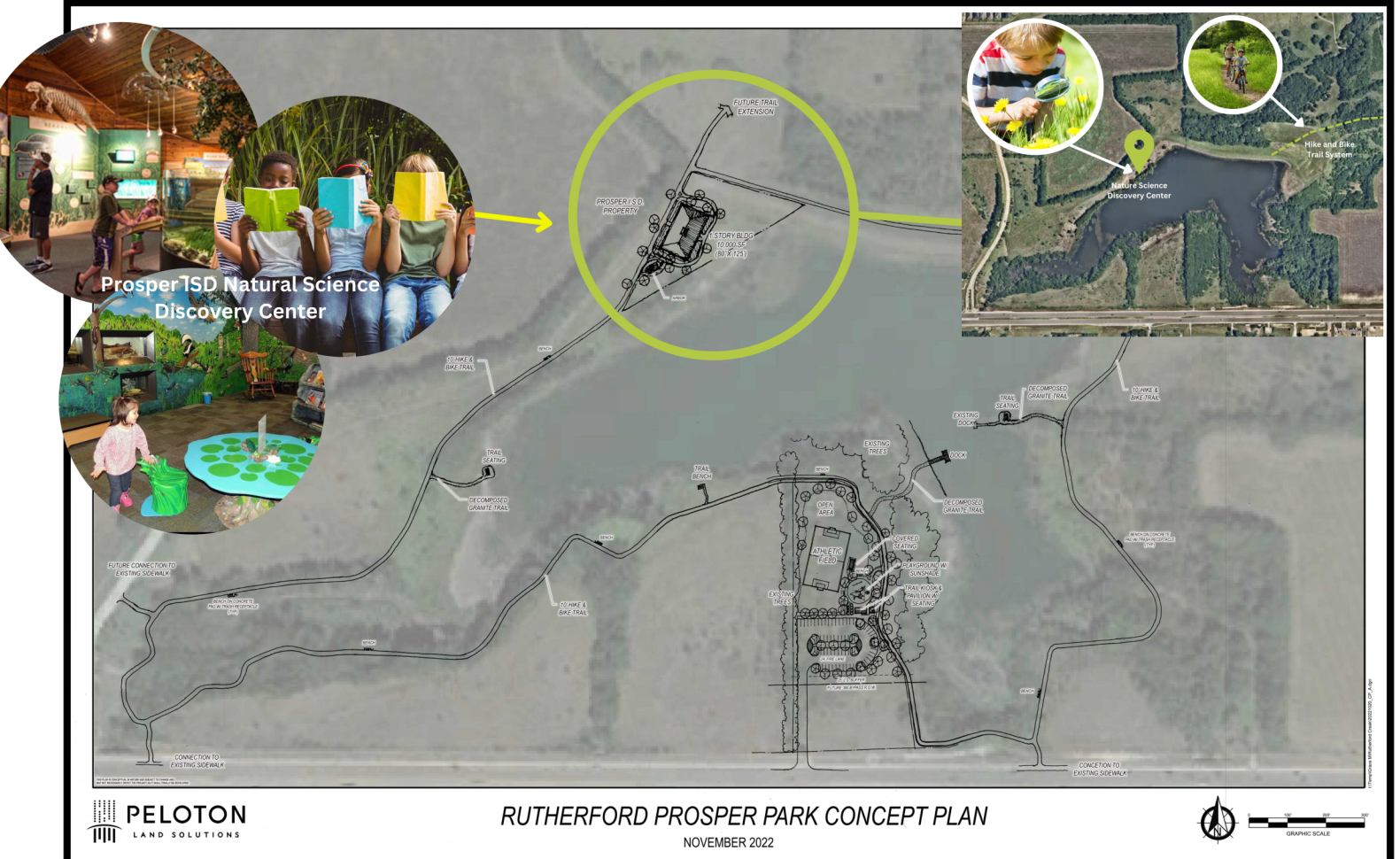
In addition to the current residential development underway, programmable open space amenities within Wandering Creek Park and Ladera Park include hike and bike trail connections to this new Rutherford Park, as reflected in **Exhibit 2**. This will also allow for easy access to residents of these and other communities in the immediate area. This park and educational facility will serve all residents of the Town and Prosper ISD.

Prosper ISD Outdoor Learning Center

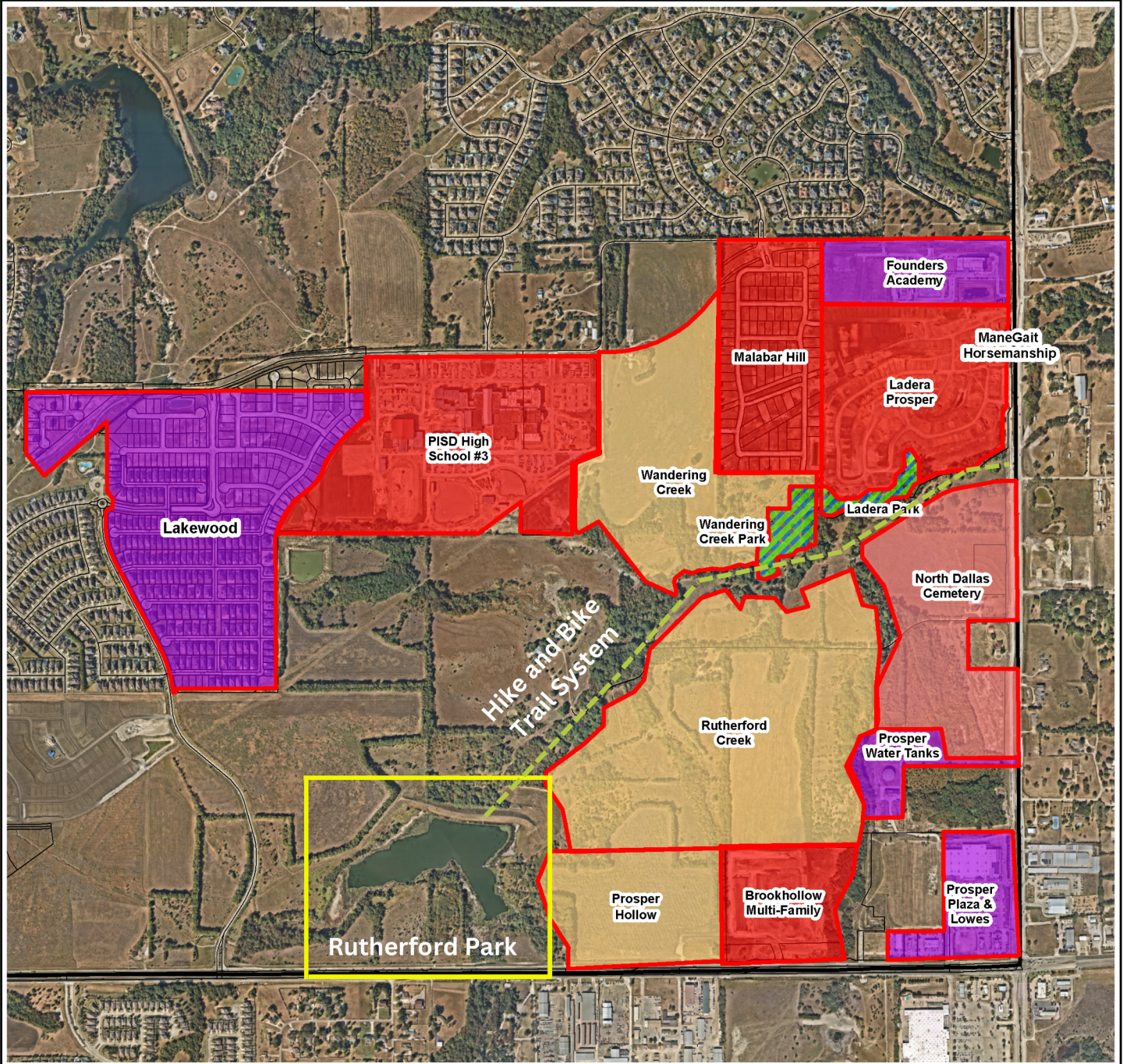
The plan for the Community Park includes a learning center for nature and science on the northwest side of the pond. This will allow for a scenic and educational natural environment for students and residents to learn about environmental education, wildlife, and urban forestry. The center will also provide educational programming and walking trails. This facility will allow students in grades pre-K through 12th grade the opportunity to access a unique educational facility throughout the year that will enhance, and foster students' curiosity about the natural environment. More details can be found on **Exhibits 3-1 and 3-2**.



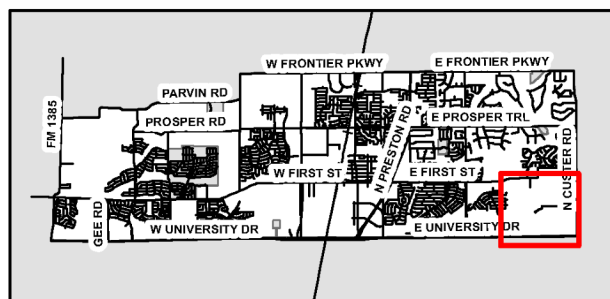
Rutherford Park Concept Plan - Ex. 1



Prosper Development Map



Prosper Development



This map is for illustration purposes only.

Prosper ISD Outdoor Learning Center – Ex. 3-1

PROSPER ISD OUTDOOR LEARNING CENTER

Enrich. Experience. Explore.

Prosper ISD students are excited about the opportunities to explore the world and access experiences that our school walls are unable to provide.

**THE OUTDOOR LEARNING CENTER WILL PROVIDE
OPPORTUNITY FOR EACH AND EVERY CHILD.**

A central location makes it easily accessible by bus during school hours, or for families that want to have an after-school outing.

All grade levels are immersed in science content each year including life cycles, ecosystems, rocks and soil, natural resources and more. This facility will support this content being taught in schools, extend learning by providing hands-on investigations.



HIKING TRAILS



**IN-DISTRICT
FIELD TRIPS**



**DIVERSE
ECOSYSTEMS**



**INTERACTIVE
SCIENCE LESSONS**

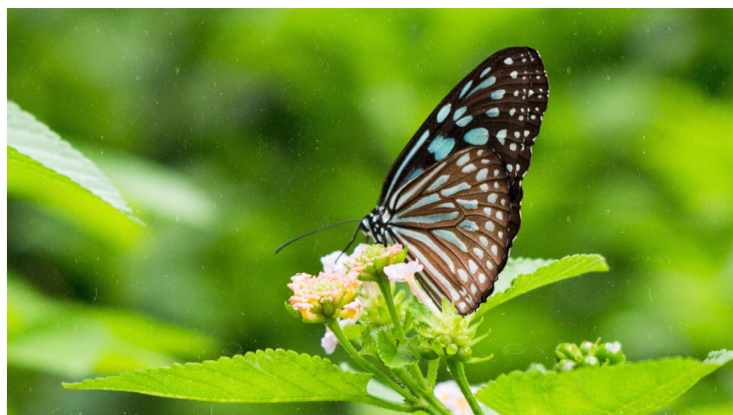


**MONARCH
CONSERVATION
PROJECT**



**NATIVE PLANTS
AND ANIMALS**

The center will not only support science education, but will also be used for learning in Mathematics, Reading-Language Arts, Social Studies, CTE, and Fine Arts.



In partnership with



Every member of the Prosper Community may access this beautiful area and find value and enjoyment. By partnering with the town of Prosper, we will create a location that supports both academic and personal growth.

Prosper ISD Outdoor Learning Center – Ex. 3-2



Grounded by Tradition, Soaring to New Beginnings
Prosper Independent School District

The Prosper ISD Outdoor Learning Center

We are excited to propose the development of the Prosper ISD Outdoor Learning Center located within Prosper on 35 acres north of 380. The Outdoor Learning Center will utilize the natural environment to provide students memorable and relevant learning experiences. Students will put into practice what they learn within the classroom in real-life scenarios that support both academic and personal growth goals.

This facility will allow students (grades PK-12) the opportunity to access a unique educational facility throughout the year that will

- Enhance and foster students' curiosity about the natural world,
- Support every grade level of science content, and
- Extend and enrich daily science instruction.

The Outdoor Learning Center will benefit not only the students of Prosper ISD, but also provide a space for intergenerational learning; it is important that this facility is a place that benefits all citizens of our community.

The facility would provide students and the community a space:

- For in-district field trips;
- To observe and study native plants and animals;
- To experience interactive science experiences using the diverse ecosystems on site;
- To foster conservation initiatives that develop responsible citizens and good stewards of our environment; and
- To increase their physical health and a respect for nature through the use of hiking and walking trails.

Prosper ISD continues to expand services to meet and exceed the facilities and learning opportunities offered in the Metroplex and looks forward to partnering with the Town of Prosper to explore other opportunities, which may include an open performance space, wedding venues and locations for family and other community events. The Outdoor Learning Center will serve each and every student in Prosper ISD and also prove to be a valuable resource for the larger Prosper community.

About the Town of Prosper, TX - Attach. 1

Community

The Town of Prosper is a fast-growing community offering a high quality of life, where neighbors know each other and kids can play in a safe, friendly community. The Town's annual growth rate was over 13% over the last year with currently 35,430 residents calling Prosper home.

Location

North of Dallas, Prosper's land area is 27 square miles and is located less than 30 minutes from two major airports: Dallas Love Field and Dallas/Fort Worth International. The Town is just 35 miles from Downtown Dallas and 55 miles from Fort Worth.

Education

The Town of Prosper is working alongside the Prosper Independent School District on this exceptional park and educational experience to provide the most optimal park system and educational facility for the increasing number of children in the community. Prosper ISD continues to be one of the fastest-growing school districts in Texas. In 2021-2022, the district had more than 22,000 students and more than 2,600 staff members serving 14 elementary schools, 4 middle schools, and 2 high schools. By buildout, the district is expected to have 28-30 elementary campuses, 9-10 middle schools, and 4-5 high school campuses.

History

The Town of Prosper began as a farming community in Collin County in the early 1900s. In its early years, the town was also a central stop for the railroad between Dallas and Sherman. Prosper was incorporated in 1914 with a population of 500.

Parks and Recreation

Prosper prides itself on having parks and recreation facilities that promote healthy lifestyles for all ages and enhance property values.

The Town is home to more than 350 acres of park, including open spaces, recreational venues, athletic facilities, and tennis courts. More than 30 miles of hike and bike trails weave throughout Prosper with plans for additional trails but the need for more acreage and facilities continues to increase.

