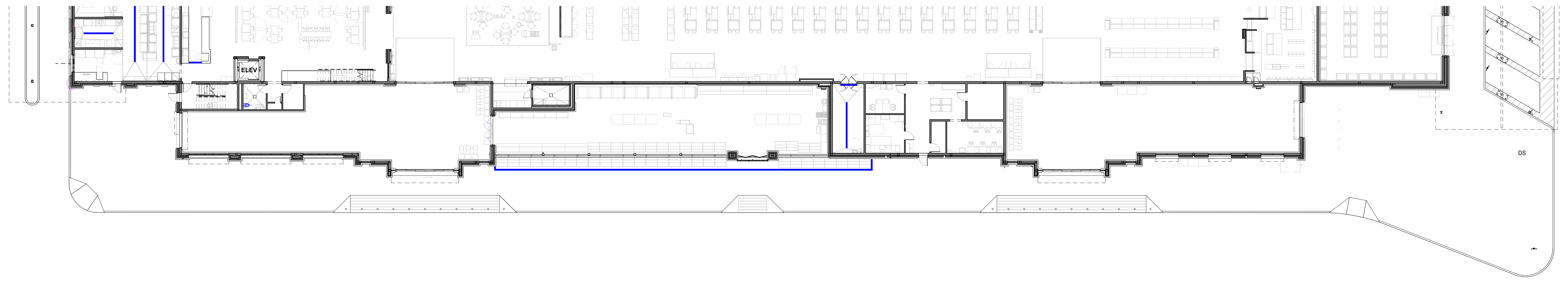
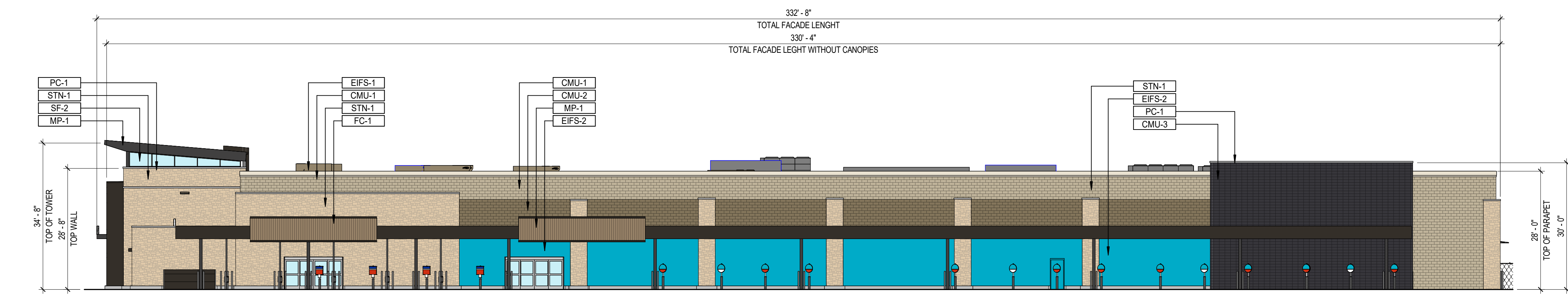


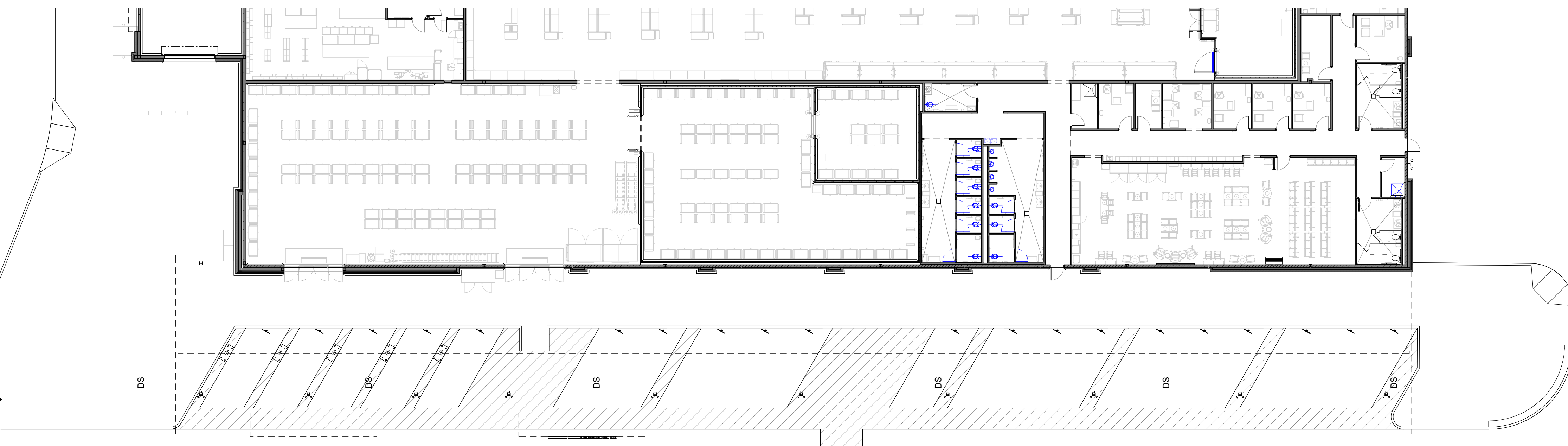
1 OVERALL EXTERIOR NORTH ELEVATION - FRONT
 1/16" = 1'-0"
 NOTE: MECHANICAL UNITS ARE SCREENED BY BUILDING PARAPET. REFERENCE SITE LINE STUDY VIEWS.



2 NORTH ELEVATION - FRONT FOOTPRINT
 1/16" = 1'-0"



3 OVERALL EXTERIOR WEST ELEVATION - SIDE
 1/16" = 1'-0"
 NOTE: MECHANICAL UNITS ARE SCREENED BY BUILDING PARAPET. REFERENCE SITE LINE STUDY VIEWS.



4 WEST ELEVATION - SIDE FOOTPRINT
 1/16" = 1'-0"

EXTERIOR FINISH LEGEND

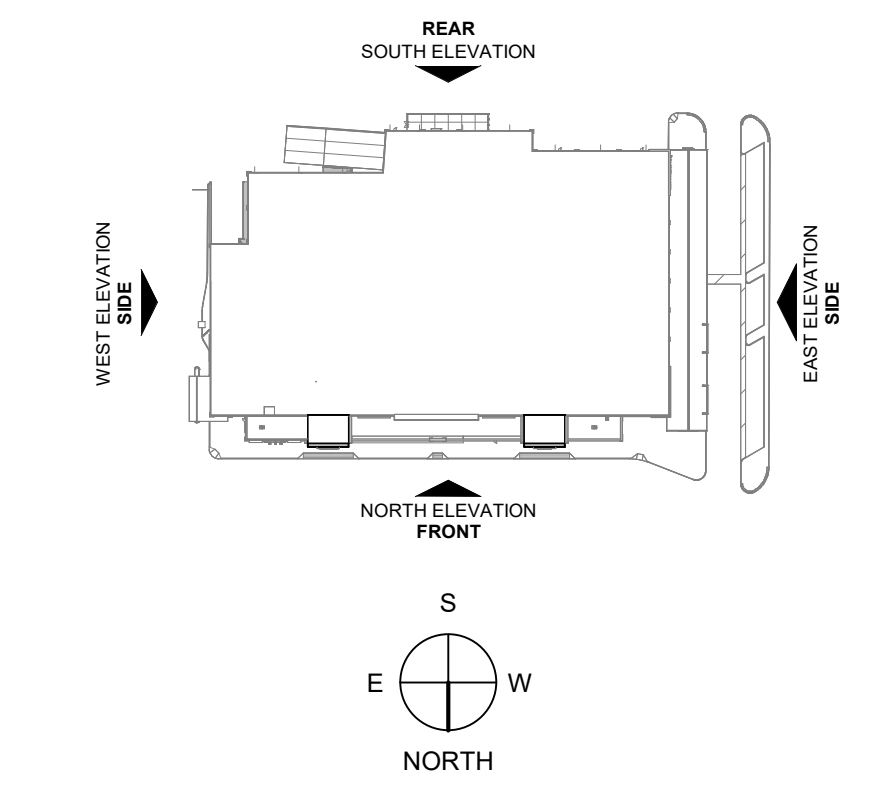
CODE	MATERIAL	MATERIAL
MASONRY		
BR-1	FACE BRICK	COLOR 1
CMU-1	CMU - INTEGRAL COLOR (LIGHT COLORED)	COLOR 1
CMU-2	CMU - INTEGRAL COLOR (MEDIUM COLORED)	COLOR 2
CMU-3	ARCHITECTURAL CMU (DARK COLORED)	COLOR 3
STN-1	STONE	NATURAL LIMESTONE
STN-2	STONE	NATURAL LIMESTONE
METAL		
MP-1	ACM PANELS	COLOR 1
MP-2	CORRUGATED METAL 30" PANELS	COLOR 1
FC-1	PANELIZED FIBER CEMENT GLAZING SYSTEM	COLOR 1
STL-1	PAINTED EXPOSED STRUCTURAL STEEL	BLACK MAGIC - PPG 1001-7
EIFS		
EIFS-1	EXTERIOR INSULATION FINISHING SYSTEM	PAINTED PT-1
EIFS-2	EXTERIOR INSULATION FINISHING SYSTEM	PAINTED PT-2
PANT		
PT-1	PAINT	LIGHT BEIGE PPG1086-2 BRANDED PEARS
PT-2	PAINT	CUSTOM BY BEHR CURBSIDE BLUE
PT-3	PAINT	HEB RED
MISC		
SF-1	ALUMINUM STOREFRONT SYSTEM	DARK BRONZE ALUMINUM FINISH
SF-2	ALUMINUM STOREFRONT SYSTEM	DARK BRONZE ALUMINUM FINISH
PC-1	PRE-CAST STONE CAPS	STANDARD GRAY

NORTH ELEVATION - 14,060 SF

MATERIAL	CODE	SF	PERCENTAGE
STONE	STN	1,638	11.6%
MASONRY	CMU-1	4,412	31.4%
MASONRY	CMU-3	1,408	10%
EIFS	EIFS	1,720	12.2%
GLAZING	SF	1,968	14.1%
METAL PANELS	MP	2,896	20.7%
TOTAL		14,060	100%

WEST ELEVATION - 9,349 SF

MATERIAL	CODE	SF	PERCENTAGE
STONE	STN	2,001	11.6%
MASONRY	CMU-1	1,802	31.4%
MASONRY	CMU-2	1,900	31.4%
MASONRY	CMU-3	1,297	10%
EIFS	EIFS	1,980	12.2%
GLAZING	SF	194	14.1%
METAL PANELS	MP-1	1,275	20.7%
TOTAL		9,349	100%



PROJECT # DEVAPP-23-0180
H.E.B. PROSPER - STORE
 16.933 ACRES
 BLOCK A | LOT 6
 AN ADDITION TO THE CITY OF PROSPER
 COLLIN COUNTY, TEXAS
 SEPTEMBER, 2023

H.E.B. LP OWNER
 643 S. MAIN (210) 938-8000
 SAN ANTONIO, TEXAS 75002

CONTACT: JOHN ROSE

CLAYMOORE ENGINEERING ENGINEER
 1903 CENTRAL DRIVE, SUITE #406 (817) 281-0572
 BEDFORD, TEXAS 76021
 CONTACT: DREW DONOSKY

- CITY OF PROSPER GENERAL NOTES**
- THIS FACADE PLAN IS FOR CONCEPTUAL PURPOSES ONLY. ALL BUILDING PLANS REQUIRE REVIEW AND APPROVAL FROM THE BUILDING INSPECTIONS DIVISION.
 - ALL MECHANICAL EQUIPMENT SHALL BE SCREENED FROM PUBLIC VIEW. ROOF TOP MOUNTED EQUIPMENT SHALL BE SCREENED BY A PARAPET WALL OR SCREENING WALL. SCREENING WALLS SHALL BE PAINTED TO MATCH THE BUILDING.
 - WHEN PERMITTED, EXPOSED UTILITIES BOXES AND CONDUITS SHALL BE PAINTED TO MATCH THE BUILDING.
 - ALL SIGNAGE AREAS AND LOCATIONS ARE SUBJECT TO APPROVAL BY THE BUILDING INSPECTIONS DIVISION.
 - WIREWORK SHALL HAVE A MINIMUM EXTERIOR VISIBLE REFLECTIVITY OF TEN (10) PERCENT.
 - ANY DEVIATION FROM THE APPROVED FACADE PLAN WILL REQUIRE RE-APPROVAL BY THE TOWN OF PROSPER.

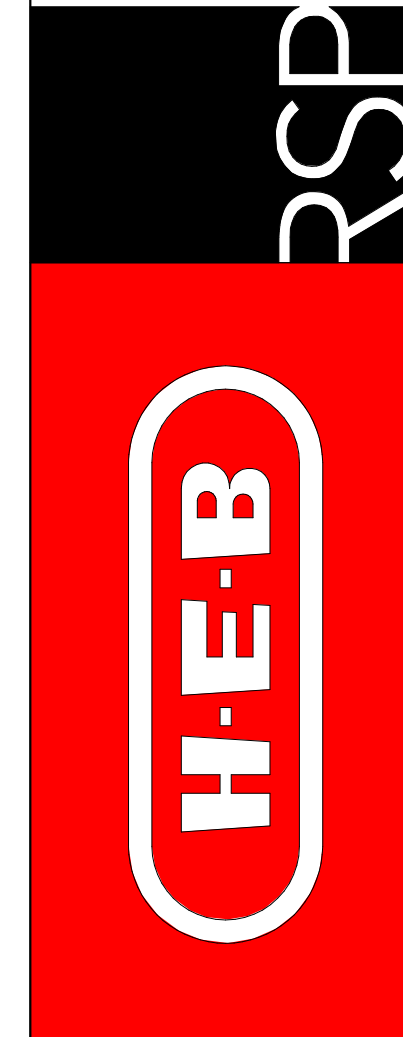
CITY APPROVAL

PLEASE BE ADVISED, THIS DOCUMENT MAY CONTAIN INFORMATION THAT IS UNCLASSIFIED, BUT WHICH, IF DISCLOSED, COULD BE DETERMINED TO BE A CONFIDENTIAL DOCUMENT. ACCEPTANCE OF THIS DOCUMENT AND THE INFORMATION CONTAINED HEREIN SHALL BE IN FULL AND EXCLUSIVE WITNESS OF THE PARTIES. NO PART OF THIS DOCUMENT SHALL BE REPRODUCED OR TRANSMITTED IN ANY FORM OR BY ANY MEANS, ELECTRONIC OR MECHANICAL, INCLUDING PHOTOCOPYING, RECORDING, OR BY ANY INFORMATION STORAGE AND RETRIEVAL SYSTEM, WITHOUT THE EXPRESS WRITTEN PERMISSION OF H.E.B. GROCERY AND DISTRIBUTION TO WHOLESALE ENTITIES. CONFIDENTIALITY AGREEMENT.

Date	Description	Revision

THESE DOCUMENTS ARE FOR INFORMATION ONLY AND ARE NOT INTENDED FOR BIDDING, PERMITTING OR CONSTRUCTION PURPOSES.
 ARCHITECT:
RSP ARCHITECTS, LTD.

RSP Architects, Ltd.
 600 W. 4th Street, Suite 100
 Fort Worth, TX 76102
 817.200.0340 main
 817.277.8658 fax
 www.rsparch.com



EXTERIOR ELEVATIONS

H.E.B. PROSPER | CORP # 809
 75220 Frontier Pkwy | Prosper, Texas 75078

SCALE: AS INDICATED
 CONSULT: NO. 3443.000.01
 DATE: 12-18-2023
 SHEET NO. **02**

