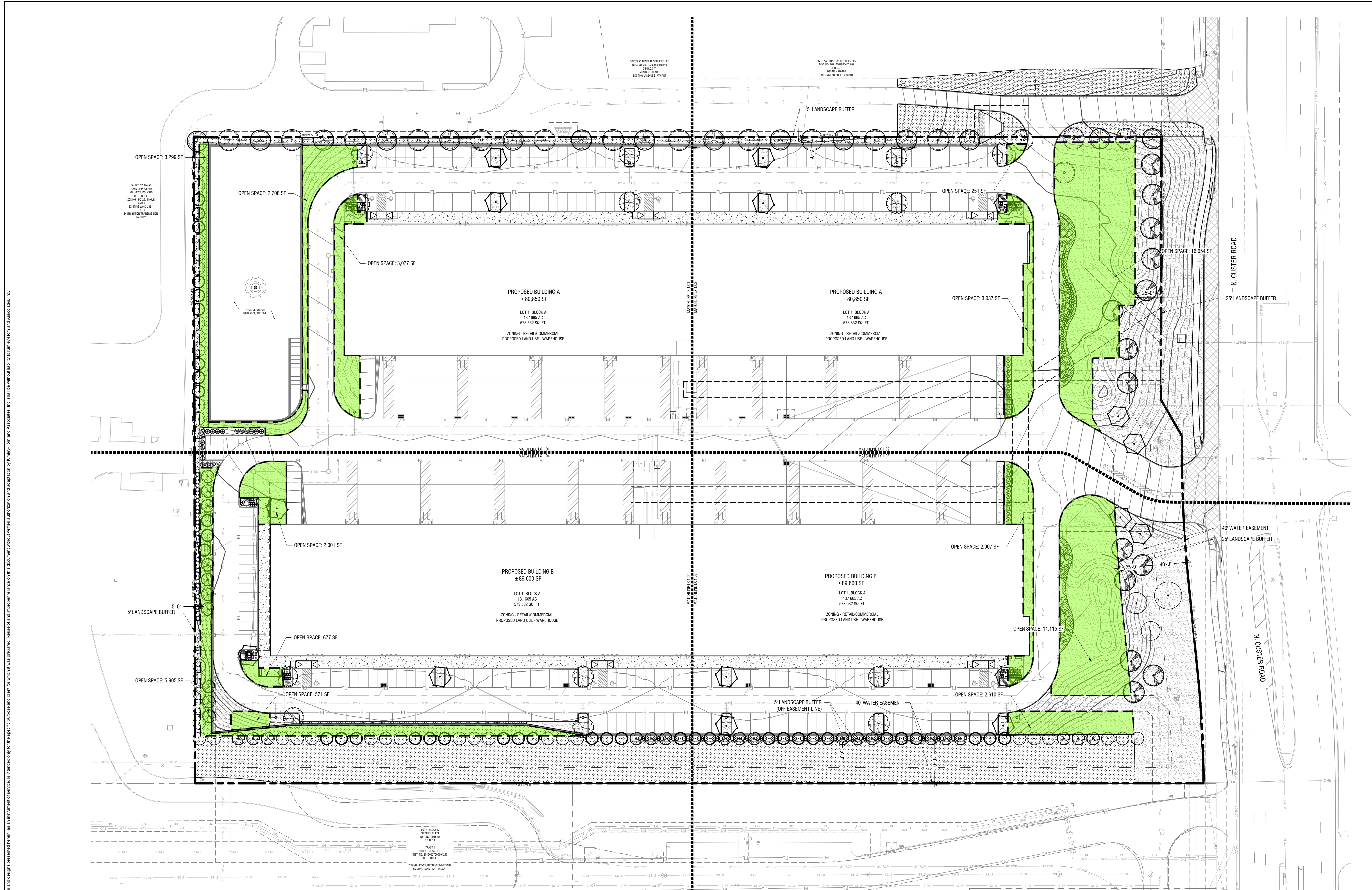


IMAGES: © 2022 KIMLEY-HORN AND ASSOCIATES, INC. ALL RIGHTS RESERVED. THIS DOCUMENT IS THE PROPERTY OF KIMLEY-HORN AND ASSOCIATES, INC. AND IS NOT TO BE REPRODUCED OR TRANSMITTED IN ANY FORM OR BY ANY MEANS, ELECTRONIC OR MECHANICAL, INCLUDING PHOTOCOPYING, RECORDING, OR BY ANY INFORMATION STORAGE AND RETRIEVAL SYSTEM. WITHOUT THE WRITTEN PERMISSION OF KIMLEY-HORN AND ASSOCIATES, INC.



CALLED TO MATCH
 TOWN OF PROSPER
 100, 100, 100, 100
 ZONING - RETAIL COMMERCIAL
 EXISTING LAND USE -
 DISTRIBUTION/TRANSMISSION
 FACILITY

OPEN SPACE: 3,299 SF

OPEN SPACE: 2,708 SF

OPEN SPACE: 3,027 SF

OPEN SPACE: 2,001 SF

OPEN SPACE: 677 SF

OPEN SPACE: 5,905 SF

OPEN SPACE: 571 SF

OPEN SPACE: 2,907 SF

OPEN SPACE: 2,610 SF

OPEN SPACE: 251 SF

OPEN SPACE: 16,054 SF

OPEN SPACE: 3,037 SF

PROPOSED BUILDING A
 ±80,850 SF
 LOT 1, BLOCK A
 13.1665 AC
 573,532 SQ. FT.
 ZONING - RETAIL COMMERCIAL
 PROPOSED LAND USE - WAREHOUSE

PROPOSED BUILDING A
 ±80,850 SF
 LOT 1, BLOCK A
 13.1665 AC
 573,532 SQ. FT.
 ZONING - RETAIL COMMERCIAL
 PROPOSED LAND USE - WAREHOUSE

PROPOSED BUILDING B
 ±89,600 SF
 LOT 1, BLOCK A
 13.1665 AC
 573,532 SQ. FT.
 ZONING - RETAIL COMMERCIAL
 PROPOSED LAND USE - WAREHOUSE

PROPOSED BUILDING B
 ±89,600 SF
 LOT 1, BLOCK A
 13.1665 AC
 573,532 SQ. FT.
 ZONING - RETAIL COMMERCIAL
 PROPOSED LAND USE - WAREHOUSE

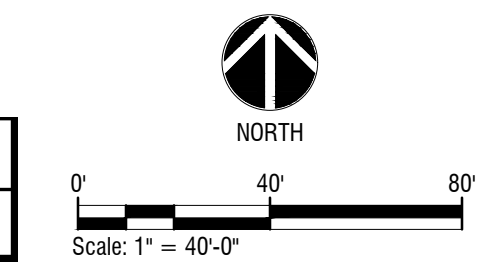
BLDG B - FACADE AREAS						
ELEVATION	SURFACE AREA	GLAZING AREA	NET AREA	AREA OF TILT	% OF TILT	% OF BRICK
EAST	3,616 SF	299 SF	3,317 SF	2,031 SF	61%	39%
WEST	3,666 SF	85 SF	3,581 SF	3,467 SF	97%	3%
NORTH	21,334 SF	0 SF	17,606 SF	17,530 SF	99%	1%
SOUTH	21,210 SF	3,573 SF	17,637 SF	13,643 SF	77%	23%

BLDG A - FACADE AREAS						
ELEVATION	SURFACE AREA	GLAZING AREA	NET AREA	AREA OF TILT	% OF TILT	% OF BRICK
EAST	4,515 SF	299 SF	4,216 SF	2,931 SF	70%	30%
WEST	4,171 SF	85 SF	4,086 SF	3,951 SF	97%	3%
NORTH	18,957 SF	3,216 SF	15,741 SF	12,119 SF	77%	23%
SOUTH	19,759 SF	0 SF	16,322 SF	16,246 SF	99%	1%



Open Space Area
 7% of site to be provided as open space

	Required (SF)	Provided (SF)
	40,147	54,162 SF



Kimley»Horn © 2026 KIMLEY-HORN AND ASSOCIATES, INC. 260 EAST DAVIS STREET, SUITE 100, MCKINNEY, TX 75069 PHONE: 469-301-2560 FAX: 972-239-3820 WWW.KIMLEY-HORN.COM TX F-928	No. _____ REVISIONS _____ DATE _____
KHA PROJECT: 064464513 DATE: MARCH 2026 SCALE: AS SHOWN DESIGNED BY: KMR DRAWN BY: KMR CHECKED BY: MRP	TEXAS PROSPER PROSPER COMMERCE CENTER CENTER
OVERALL OPEN SPACE PLAN	SHEET NUMBER LP 1.00