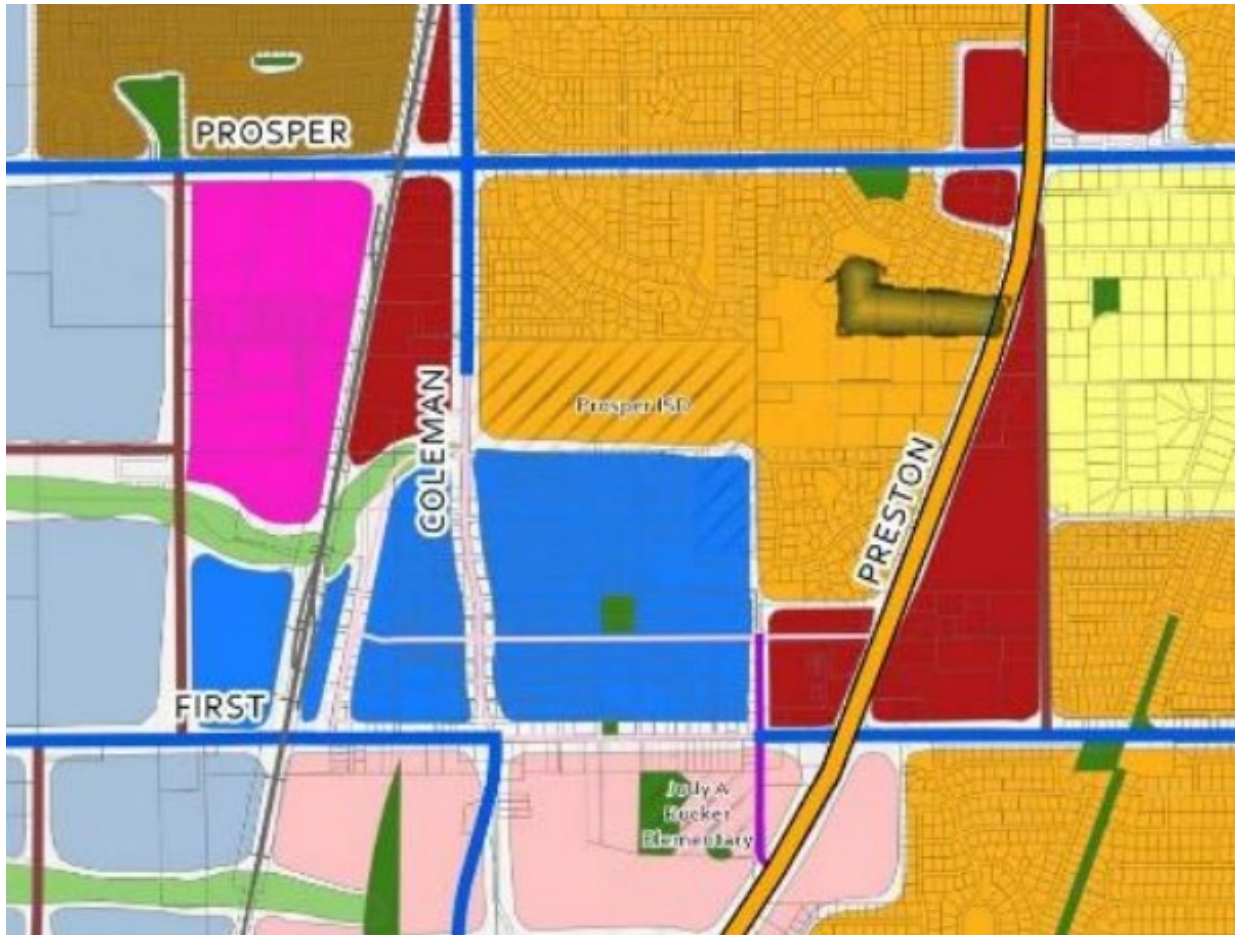


## Future Land Use Plan Exhibit



- |  |   |
|--|---|
| <span style="display: inline-block; width: 15px; height: 15px; background-color: yellow; border: 1px solid black;"></span> Low Density Residential     | <span style="display: inline-block; width: 15px; height: 15px; background-color: lightblue; border: 1px solid black;"></span> Dallas North Tollway District |
| <span style="display: inline-block; width: 15px; height: 15px; background-color: orange; border: 1px solid black;"></span> Medium Density Residential  | <span style="display: inline-block; width: 15px; height: 15px; background-color: purple; border: 1px solid black;"></span> US Highway 380 District          |
| <span style="display: inline-block; width: 15px; height: 15px; background-color: brown; border: 1px solid black;"></span> High Density Residential     | <span style="display: inline-block; width: 15px; height: 15px; background-color: green; border: 1px solid black;"></span> Parks                             |
| <span style="display: inline-block; width: 15px; height: 15px; background-color: red; border: 1px solid black;"></span> Retail & Neighborhood Services | <span style="display: inline-block; width: 15px; height: 15px; background-color: lightgreen; border: 1px solid black;"></span> Floodplain                   |
| <span style="display: inline-block; width: 15px; height: 15px; background-color: pink; border: 1px solid black;"></span> Business Park                 | <span style="display: inline-block; width: 15px; height: 15px; border: 1px dashed black;"></span> School District Properties                                |
| <span style="display: inline-block; width: 15px; height: 15px; background-color: blue; border: 1px solid black;"></span> Old Town District             | <span style="display: inline-block; width: 15px; height: 15px; border: 1px dotted black;"></span> Town Limits   |
| <span style="display: inline-block; width: 15px; height: 15px; background-color: lightpink; border: 1px solid black;"></span> Town Center              |   |

- Dallas North Tollway, Dedicated Truck Route
- 6 Lane Divided
- 4 Lane Divided
- Commercial Collector
- 3 Lane Undivided Couplet
- Access Roads
- Old Town Roads