



EV CHARGING STATION

NOTE:

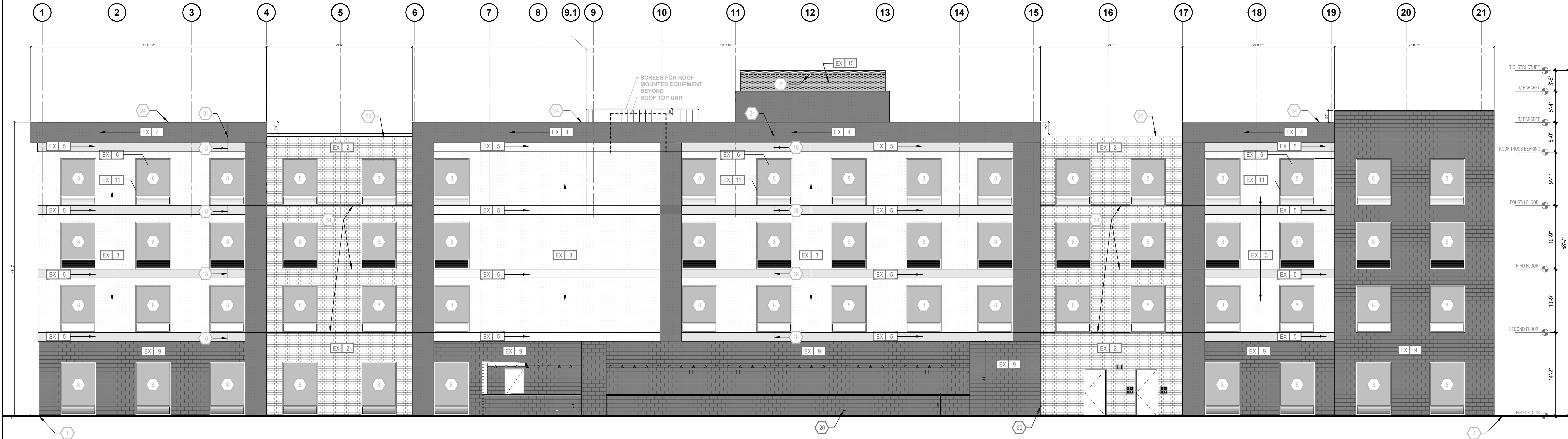
BUILDING ARTICULATIONS FEATURES INCORPORATED INTO THE BUILDING DESIGN FOR EACH FACADE.

1. VARIATION OF ROOF LINES
2. RECESSED ENTRYWAY
3. STONE OR BRICK ACCENT WALL
4. CANOPIES
5. UNIQUE ROOF FEATURES (PARAPETS)

BUILDING ELEVATION AREAS

	TOTAL SURFACE AREA	TOTAL GLAZING AREA		NET SURFACE AREA	EIFS*		STONE		BRICK	
SOUTH ELEVATION	12422 sq. ft.	3925 sq. ft.	31.59 %	8497 sq. ft.	5057 sq. ft.	59.52 %	2019 sq. ft.	23.76 %	1421 sq. ft.	16.72 %
NORTH ELEVATION	12470 sq. ft.	3076 sq. ft.	24.67 %	9394 sq. ft.	5127 sq. ft.	54.57 %	2677 sq. ft.	28.50 %	1590 sq. ft.	16.93 %
EAST ELEVATION	4206 sq. ft.	153 sq. ft.	3.64%	4053 sq. ft.	1585 sq. ft.	39.12 %	1221 sq. ft.	30.12 %	1247 sq. ft.	30.76 %
WEST ELEVATION	4205 sq. ft.	153 sq. ft.	3.63%	4052 sq. ft.	1464 sq. ft.	36.13 %	1293 sq. ft.	31.91 %	1295 sq. ft.	31.96 %

* INCLUDES EX-1, EX-3, EX-4, EX-5, EX-10



2 EXTERIOR ELEVATION - NORTH
1/8" = 1'-0"



1 EXTERIOR ELEVATION - SOUTH
1/8" = 1'-0"

KEY NOTES:

- 1 APPROXIMATE LINE OF GRADE
- 2 ABOVE GRADE EXPOSED FOUNDATION WALL
- 3 MASONRY OR TILE - BASE
- 4 PAINTED TUBE STEEL CANOPY WITH WOOD FINISHED SOFFIT
- 5 MODIFIED WOOD CANOPY WITH STEEL SUPPORT
- 6 MECHANICAL EQUIPMENT SCREEN - REVIEW ALL VIEWS AROUND PROPERTY BEFORE LOCATING ALL ROOF TOP MECHANICAL UNITS. VERIFY ALL EQUIPMENT IS ADEQUATELY SCREENED.
- 7 LED LIGHTING PLACED ON INSIDE OF FACE FOR ILLUMINATION
- 8 ALUMINUM FIXED WINDOW W/ THERMAL BROKEN FRAME, INSULATED GLAZING WITH INTEGRAL ALUMINUM LOUVER AT PTAC UNITS
- 9 ALUMINUM STONEFRONT SYSTEM W/ THERMAL BROKEN FRAME AND INSULATED GLAZING
- 10 ALUMINUM FIXED WINDOW W/ THERMAL BROKEN FRAME AND INSULATED GLAZING
- 11 ELEVATOR OVERRUN
- 12 ALUMINUM SLIDING ENTRY DOOR W/ INSULATED GLAZING
- 13 LAUNDRY CHUTE OVERRUN
- 14 PAINTED TUBE STEEL CANOPY W/ STAINED WOOD TRELLIS
- 15 TONGUE N GROOVE WOOD PLANK CEILING, STAINED
- 16 ENVELOPE - CORE FINISH - REFER TO A5.02
- 17 ENVELOPE - WRAP FINISH - REFER TO A5.02
- 18 FINISH CONTROL JOINT
- 19 OVERFLOW SCUPPER - BASIS OF DESIGN NESCO MFG INC. - MODEL # SC714R - REFER ALSO TO DETAIL 6JAE.12
- 20 TAMPER RESISTANT, RECESSED HOSE BIB - MOUNT TOP AT +12' A.F.F.
- 21 ENVELOPE - ACCENT FINISH - REFER TO STYLE GUIDE
- 22 ENVELOPE - ACCENT FINISH - REFER TO STYLE GUIDE
- 23 SIGNAGE - REFER TO EXTERIOR SIGNAGE SPECIFICATIONS
- 24 KYNAR FINISH ALUMINUM CORING SYSTEM - COLOR TO MATCH ADJACENT MATERIAL
- 25 KYNAR FINISH ALUMINUM GRAVEL STOP - COLOR TO MATCH ADJACENT MATERIAL
- 26 REVIEW ALL VIEWS AROUND PROPERTY BEFORE LOCATING ALL ROOF TOP MECHANICAL UNITS. VERIFY ALL EQUIPMENT IS ADEQUATELY SCREENED
- 27 BUILDING UPLIGHT
- 28 PAINTED ALUMINUM OUTSIDE CORNER BY FRY REGLET, COLOR TO MATCH ADJACENT ENVELOPE - CORE FINISH
- 29 EXHAUST VENT - COLOR TO MATCH ADJACENT MATERIAL
- 30 LIGHT FIXTURE - REFER TO CEILING PLAN
- 31 EXPANSION JOINT @ FLOOR LINE W/ BACKER ROD AND SEALANT
- 32 ALUMINUM LOUVER - COLOR TO MATCH ADJACENT MATERIAL MATCHING ADJACENT WALL
- 33 BUILDING HEIGHT DIMENSIONS ARE BASED ON WOOD FRAME CONSTRUCTION. THESE DIMENSIONS WILL VARY BASED ON FINAL BUILDING CONSTRUCTION. INTERIOR CEILING HEIGHT DIMENSIONS ARE CRITICAL TO MAINTAIN AS MINIMUMS
- 34 CONCRETE PAD - REFER TO AREA DEVELOPMENT PLAN
- 35 ACCESS OPENING INTO BEACON
- 36 ALUMINUM GUTTER AND DS. COLOR TO MATCH ADJ. MATERIAL
- 37 ACCESSIBLE KEY CARD READER W/ WIRE TO ELECTRIC STRIKE IN DOOR - TOP OF READER AT 48" MAX. HEIGHT
- 38 POOL PERIMETER FENCE AS REQUIRED BY CODE W/ 3'-0" GATE
- 39 PRECAST CORNING

FINISH KEY:

- | | |
|-------|---|
| EX 1 | ENVELOPE - EIFS (KEEP) (TOWER) |
| EX 2 | ENVELOPE - EXTERIOR FINISH (SUPPORT) BRICK |
| EX 3 | ENVELOPE - EIFS (CORE BODY) SHERWIN WILLIAMS SHOUL WHITE 7042 |
| EX 4 | ENVELOPE - EIFS (WRAP) SHERWIN WILLIAMS URBANE BRONZE SW 7048 |
| EX 5 | ENVELOPE - EIFS (ACCENT BANDS) SHERWIN WILLIAMS INTELLECTUAL GREY SW 7045 |
| EX 6 | ENVELOPE - GUARDIAN, SUN GUARD SWS4 CRYSTAL GREY - CLEAR |
| EX 7 | ENVELOPE - PAINTED METAL CANOPY SHERWIN WILLIAMS NATURAL WHITE SW 7011 |
| EX 8 | ENVELOPE - GUARDIAN, SUN GUARD SWS4 CRYSTAL GREY - CLEAR |
| EX 9 | ENVELOPE - STONE (CORNER - BASE) OLD WORLD STONE VENEER |
| EX 10 | REVEAL - EIFS (BEACON REVEAL) COLOR - HOME 2 SUITES SIGNATURE GREEN BENJAMIN MOORE 318 "FLOWER POWER" |
| EX 11 | ENVELOPE - ALUMINUM WINDOWS, EXTERIOR LOUVERS AND GRILLES KAWNEER - CLEAR ANODIZED FINISH |

GENERAL NOTES THIS SHEET:

1. GROUT COLOR TO MATCH EXTERIOR TILE OR MASONRY.
2. BUILDING HEIGHT DIMENSIONS ARE BASED ON WOOD FRAME CONSTRUCTION. THESE DIMENSIONS WILL VARY BASED ON FINAL BUILDING CONSTRUCTION. INTERIOR CEILING HEIGHTS ARE CRITICAL TO MAINTAIN AS MINIMUMS

APPROVED THIS ____ DAY OF
20____ BY THE PLANNING AND
ZONING COMMISSION OF THE TOWN OF
PROSPER, TEXAS.

APPROVED THIS ____ DAY OF
20____ BY THE TOWN COUNCIL OF
THE TOWN OF PROSPER, TEXAS.



owner
SAMIR LAKHANY
Superhost Hospitality
1823 Abrieller Court
Naperville, IL 60563
t. 630.799.5900

architecture
STUDIO RED DOT
10000 NCX, Suite 1045
Dallas, TX 75231
t. 469.941.4145
c. 972.894.7594

structural engineer
WRIGHT ENGINEERS
1431 Greenway Drive Suite 800
Irving, Texas 75038
t. 713.732.0725

mep engineer
MEP GREEN DESIGN AND BUILD
915 Gemini St.
Houston, Texas 77058
t. 713.732.0725

civil engineer
TRIANGLE ENGINEERING LLC
1782 McDermott Drive
Allen, Texas 75013
t. 469.331.8566

CASE NUMBER:
DEVAPP-23-0105

project
HOME 2 SUITES by Hilton
PROSPER, TEXAS



The drawings and written material herein constitute original work of the architect, and as intellectual property and instruments of service, are subject to copyright and may not be reproduced, distributed, published or used in any way without the express written consent of the architect.

FOR REVIEW ONLY

revisions

title
EXTERIOR ELEVATIONS

date 07/11/2023

sheet

A-300

NOTE:

BUILDING ARTICULATIONS FEATURES INCORPORATED INTO THE BUILDING DESIGN FOR EACH FACADE.

- VARIATION OF ROOF LINES
- RECESSED ENTRYWAY
- STONE OR BRICK ACCENT WALL
- CANOPIES
- UNIQUE ROOF FEATURES (PARAPETS)

BUILDING ELEVATION AREAS

	TOTAL SURFACE AREA	TOTAL GLAZING AREA		NET SURFACE AREA	EIFS*		STONE		BRICK	
SOUTH ELEVATION	12422 sq. ft.	3925 sq. ft.	31.59 %	8497 sq. ft.	5057 sq. ft.	59.52 %	2019 sq. ft.	23.76 %	1421 sq. ft.	16.72 %
NORTH ELEVATION	12470 sq. ft.	3076 sq. ft.	24.67 %	9394 sq. ft.	5127 sq. ft.	54.57 %	2677 sq. ft.	28.50 %	1590 sq. ft.	16.93 %
EAST ELEVATION	4206 sq. ft.	153 sq. ft.	3.64%	4053 sq. ft.	1585 sq. ft.	39.12 %	1221 sq. ft.	30.12 %	1247 sq. ft.	30.76 %
WEST ELEVATION	4205 sq. ft.	153 sq. ft.	3.63%	4052 sq. ft.	1464 sq. ft.	36.13 %	1293 sq. ft.	31.91 %	1295 sq. ft.	31.96 %

* INCLUDES EX-1, EX-3, EX-4, EX-5, EX-10

KEY NOTES:

- APPROXIMATE LINE OF GRADE
- ABOVE GRADE EXPOSED FOUNDATION WALL
- MASONRY OR TILE - BASE
- PAINTED TUBE STEEL CANOPY WITH WOOD FINISHED SOFFIT
- MODIFIED WOOD CANOPY WITH STEEL SUPPORT
- MECHANICAL EQUIPMENT SCREEN - REVIEW ALL VIEWS AROUND PROPERTY BEFORE LOCATING ALL ROOF TOP MECHANICAL UNITS. VERIFY ALL EQUIPMENT IS ADEQUATELY SCREENED.
- LED LIGHTING PLACED ON INSIDE OF FACE FOR ILLUMINATION
- ALUMINUM FIXED WINDOW W/ THERMAL BROKEN FRAME, INSULATED GLAZING WITH INTEGRAL ALUMINUM LOUVER AT PTAC UNITS
- ALUMINUM STOREFRONT SYSTEM W/ THERMAL BROKEN FRAME AND INSULATED GLAZING
- ALUMINUM FIXED WINDOW W/ THERMAL BROKEN FRAME AND INSULATED GLAZING
- ELEVATOR OVERRUN
- ALUMINUM SLIDING ENTRY DOOR W/ INSULATED GLAZING
- LAUNDRY CHUTE OVERRUN
- PAINTED TUBE STEEL CANOPY W/ STAINED WOOD TRELLIS
- TONGUE N GROOVE WOOD PLANK CEILING, STAINED
- ENVELOPE - CORE FINISH - REFER TO A5.02
- ENVELOPE - WRAP FINISH - REFER TO A5.02
- FINISH CONTROL JOINT
- OVERFLOW SCURPER - BASIS OF DESIGN NESCO MFG INC. - MODEL # SCT914R - REFER ALSO TO DETAIL 6JAB.12
- TAMPER RESISTANT, RECESSED HOSE BB - MOUNT TOP AT +12' A.F.F.
- ENVELOPE - ACCENT FINISH - REFER TO STYLE GUIDE
- ENVELOPE - ACCENT FINISH - REFER TO STYLE GUIDE
- SIGNAGE - REFER TO EXTERIOR SIGNAGE SPECIFICATIONS
- KYNAR FINISH ALUMINUM COPING SYSTEM - COLOR TO MATCH ADJACENT MATERIAL
- KYNAR FINISH ALUMINUM GRAVEL STOP - COLOR TO MATCH ADJACENT MATERIAL
- REVIEW ALL VIEWS AROUND PROPERTY BEFORE LOCATING ALL ROOF TOP MECHANICAL UNITS. VERIFY ALL EQUIPMENT IS ADEQUATELY SCREENED
- BUILDING UPLIGHT
- PAINTED ALUMINUM OUTSIDE CORNER BY FRV REGLET, COLOR TO MATCH ADJACENT ENVELOPE - CORE FINISH
- EXHAUST VENT - COLOR TO MATCH ADJACENT MATERIAL
- LIGHT FIXTURE - REFER TO CEILING PLAN
- EXPANSION JOINT @ FLOOR LINE W/ BACKER ROD AND SEALANT
- ALUMINUM LOUVER - COLOR TO MATCH ADJACENT MATERIAL MATCHING ADJACENT WALL
- BUILDING HEIGHT DIMENSIONS ARE BASED ON WOOD FRAME CONSTRUCTION. THESE DIMENSIONS WILL VARY BASED ON FINAL BUILDING CONSTRUCTION. INTERIOR CEILING HEIGHT DIMENSIONS ARE CRITICAL TO MAINTAIN AS MINIMUMS
- CONCRETE PAD - REFER TO AREA DEVELOPMENT PLAN
- ACCESS OPENING INTO BEACON
- ALUMINUM GUTTER AND DS. COLOR TO MATCH ADJ. MATERIAL
- ACCESSIBLE KEY CARD READER WIRED TO ELECTRIC STRIKE IN DOOR - TOP OF READER AT 48" MAX HEIGHT
- POOL PERIMETER FENCE AS REQUIRED BY CODE W/ 3'-0" GATE
- PRECAST COPING

FINISH KEY:

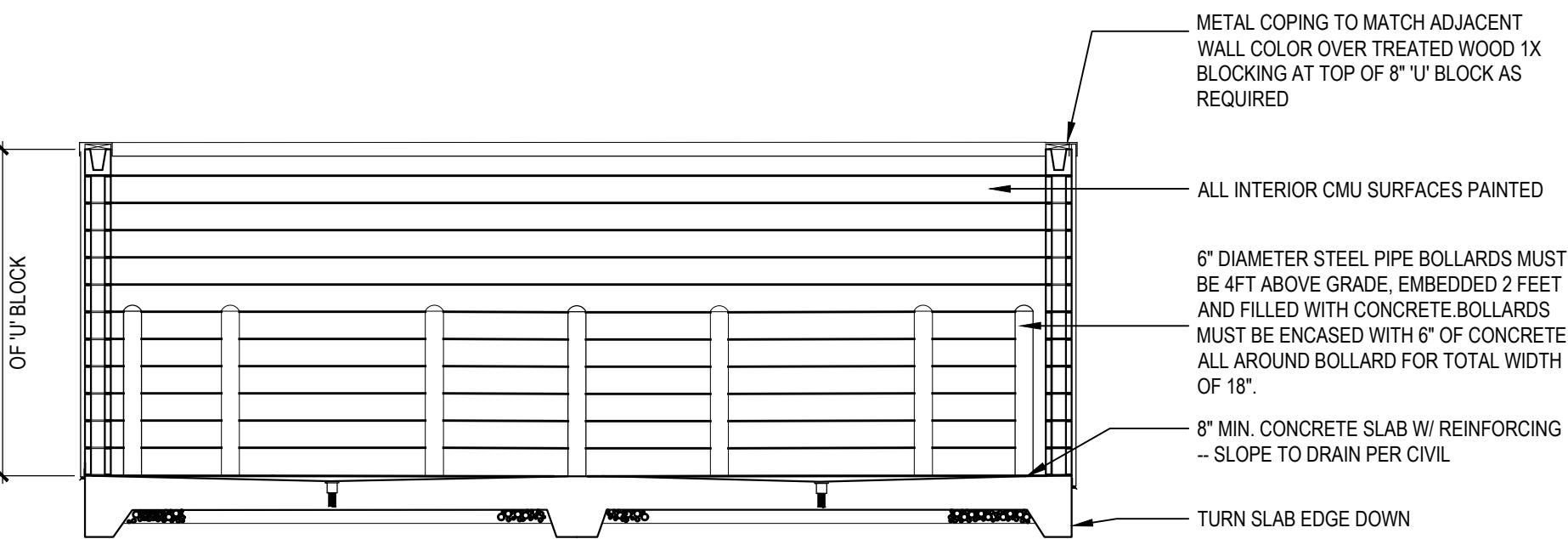
- | | |
|-------|---|
| EX 1 | ENVELOPE - EIFS (KEEP)
(TOWER)
DARK - BM 1596 NIGHTFALL (50% DARKER) |
| EX 2 | ENVELOPE - EXTERIOR FINISH (SUPPORT)
BRICK |
| EX 3 | ENVELOPE - EIFS (CORE BODY)
SHERWIN WILLIAMS SHOUL WHITE 7042 |
| EX 4 | ENVELOPE - EIFS (WRAP)
SHERWIN WILLIAMS URBANE BRONZE SW 7048 |
| EX 5 | ENVELOPE - EIFS (ACCENT BANDS)
SHERWIN WILLIAMS INTELLECTUAL GREY SW 7045 |
| EX 6 | ENVELOPE - GUARDIAN, SUN GUARD SWS4
CRYSTAL GREY - CLEAR |
| EX 7 | ENVELOPE - PAINTED METAL CANOPY
SHERWIN WILLIAMS NATURAL WHITE SW 7011 |
| EX 8 | ENVELOPE - GUARDIAN, SUN GUARD SWS4
CRYSTAL GREY - CLEAR |
| EX 9 | ENVELOPE - STONE (CORNER - BASE)
OLD WORLD STONE VENEER |
| EX 10 | REVEAL - EIFS (BEACON REVEAL)
COLOR - HOME 2 SUITES SIGNATURE GREEN
BENJAMIN MOORE 388 "FLOWER POWER" |
| EX 11 | ENVELOPE - ALUMINUM WINDOWS, EXTERIOR LOUVERS
AND GRILLES
KAWNEER - CLEAR ANODIZED FINISH |

GENERAL NOTES THIS SHEET:

- GROUT COLOR TO MATCH EXTERIOR TILE OR MASONRY.
- BUILDING HEIGHT DIMENSIONS ARE BASED ON WOOD FRAME CONSTRUCTION. THESE DIMENSIONS WILL VARY BASED ON FINAL BUILDING CONSTRUCTION. INTERIOR CEILING HEIGHTS ARE CRITICAL TO MAINTAIN AS MINIMUMS.

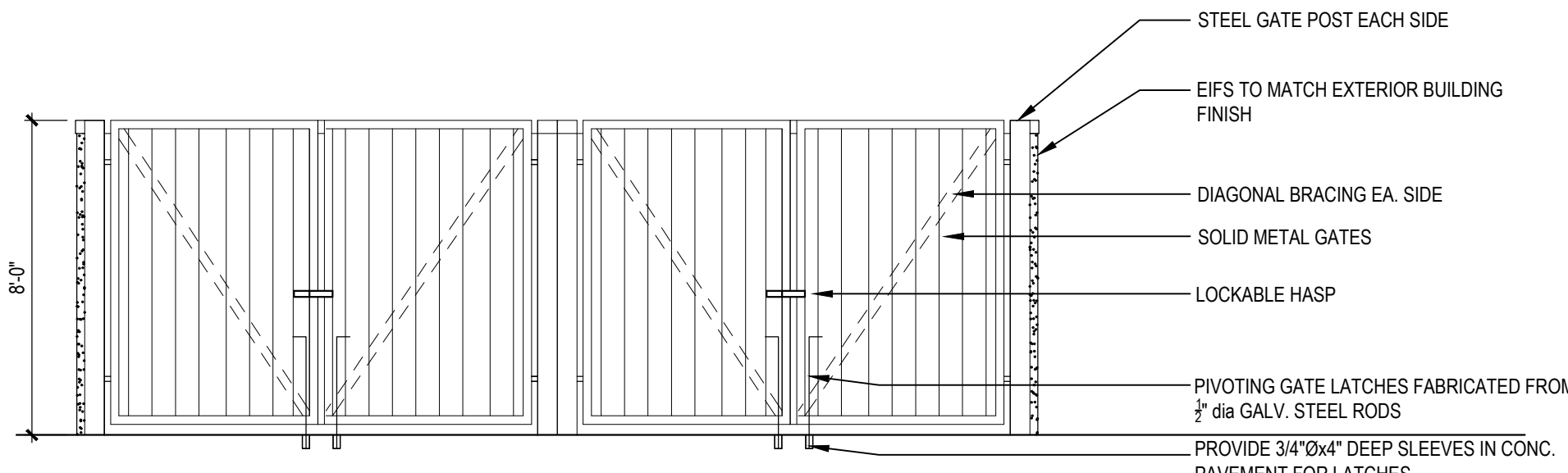
TRASH ENCLOSURE ELEVATION

SCALE: 1/4" = 1'-0"



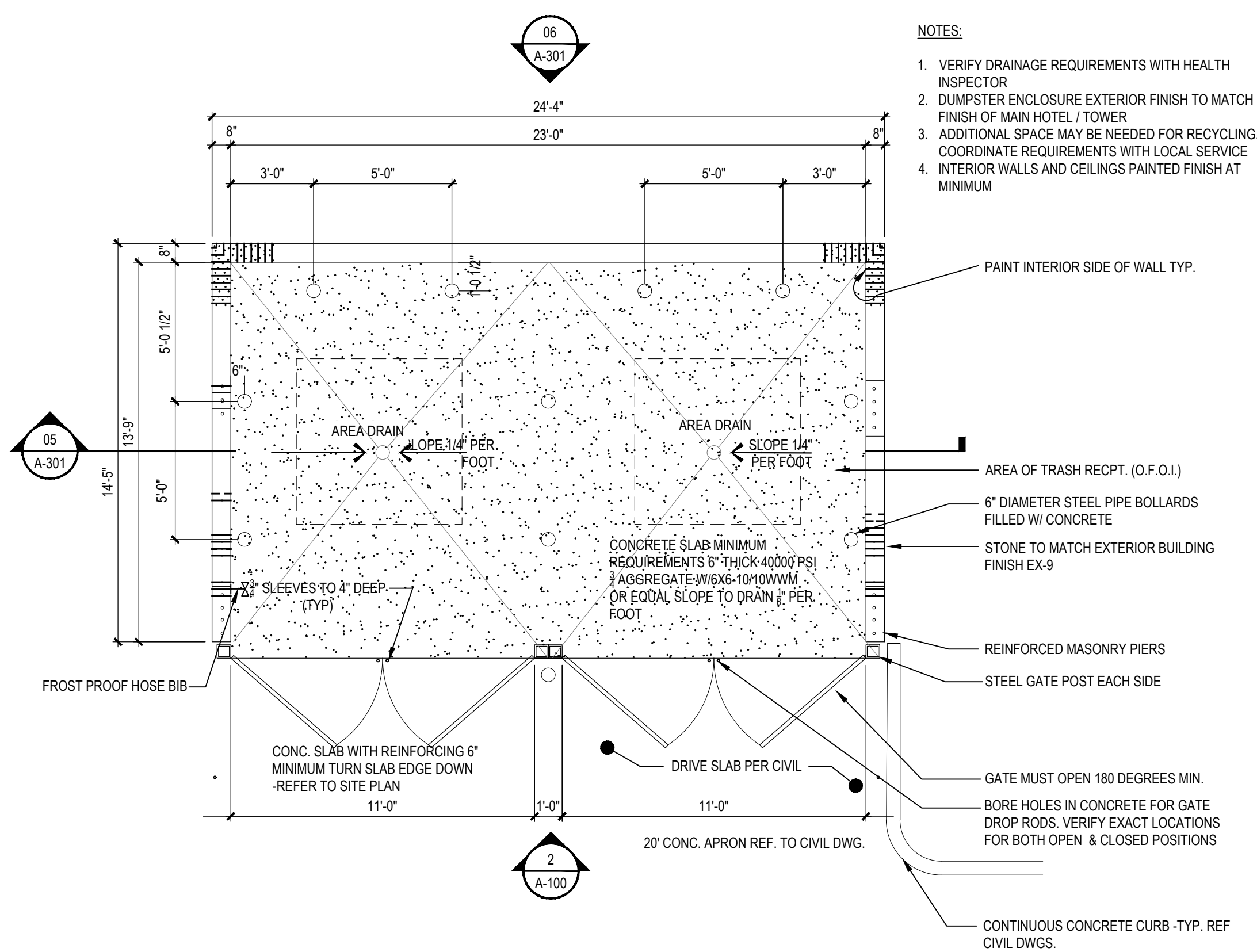
TRASH ENCLOSURE SECTION

SCALE: 1/4" = 1'-0"



TRASH ENCLOSURE ELEVATION

SCALE: 1/4" = 1'-0"

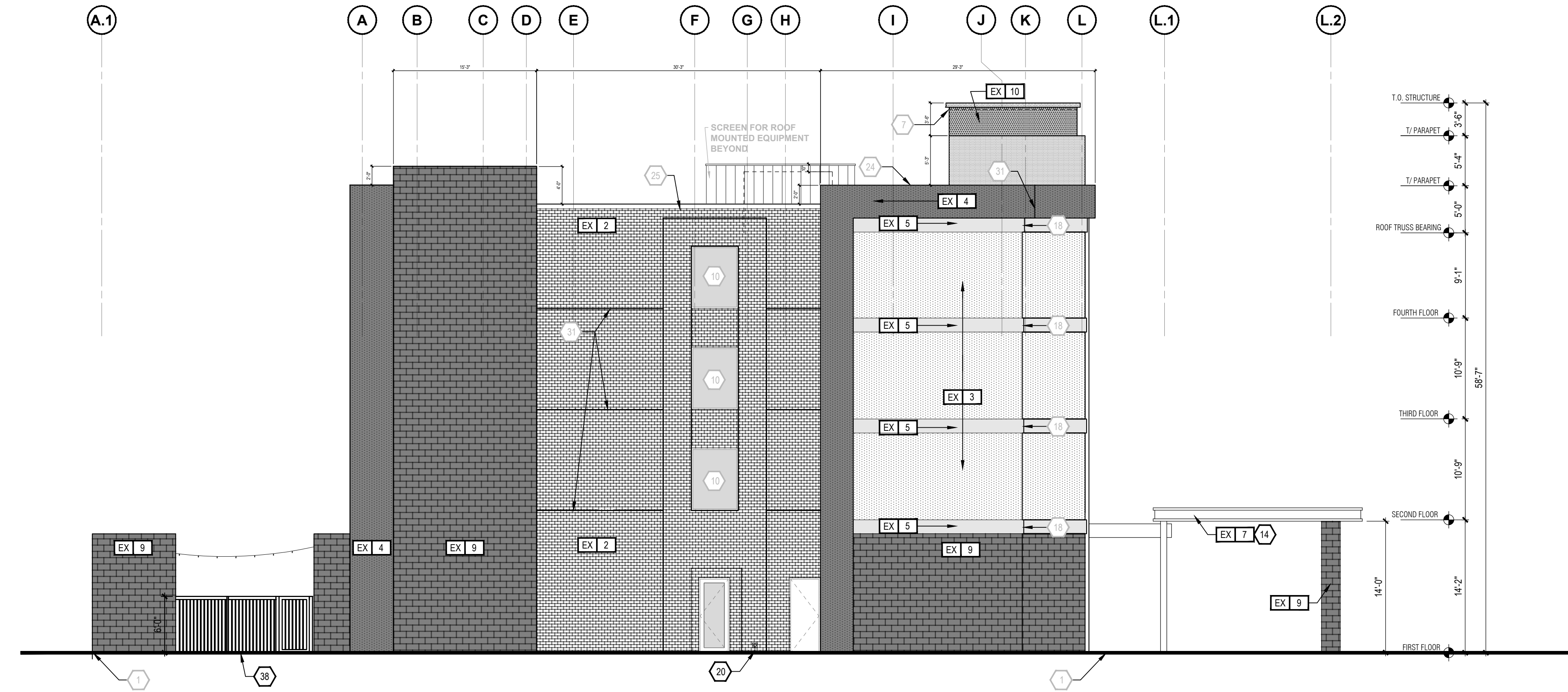


TRASH ENCLOSURE PLAN

SCALE: 1/4" = 1'-0"

EXTERIOR ELEVATION - WEST

1/8" = 1'-0"



EXTERIOR ELEVATION - EAST

1/8" = 1'-0"

