



Raymond Park

Phase I

Town Council Update

June 28, 2022



An aerial photograph showing a large, open grassy field with scattered trees. A winding river or stream flows through the lower portion of the image, bordered by dense green trees. In the background, a residential neighborhood with many houses and a few commercial buildings is visible, separated from the park area by a road.

Our Team's Commitment

*Create a landmark park in Prosper
that respects the rich heritage of the
community, the site, and its name.*

Community Legacy



Site Sensitivity



Honoring Dudley





Community Legacy

Agriculture Production Economy Investment History Generations Family
Farm Cultivate Stewardship Fruitful Prosperity Growth Legacy Roots



Site Sensitivity



Nature Wildlife Trees Roots Agriculture Water Wildflowers Butterflies
Natural Resources Native Enduring Escape Prairie Perennials Ecosystem



Honoring Dudley



Memories
Tribute

Prosper
Joyful

Giving

Commemoration
Supportive

Life
Buoyant

Family

Honor

Design
Happiness

Fun

Respect
Legacy



Site Overview













Conceptual Alternative

2015 Master Plan



Key Features

- Central 4-Plex w/ 250' Foul Lines
- Multi-Use Field Sports at Perimeter
- Highly Visible Community Center at First & Coit Intersection
- (4) Full-Size Tennis Courts
- Community Gathering w/ Amphitheater at Water's Edge
- Neighborhood Park Amenities at Pond
- Trail Connections to Town Trail Network
- Parking +/- 645 Spaces

2022 Revised Concept Plan



Feature Updates

- Prominent entries off Coit & First
- Organize circulation off 4-plex symmetry
- Parking serves different recreation areas
- Civic space enjoys backdrop of trees & water
- Tennis & pickleball have distinct space
- Maintained areas for Field Sports

Program Elements

Sports

Lighted 4-Plex
Multi-Use Fields
Tennis & Pickleball

Community

Inclusive Playground
Amphitheater
Sprayground

Trails

Hike & Bike Trails
Trailheads
Wayfinding

Vehicular

Primary Entries
Parking Areas
Drop Off / Access

Architecture

Group Pavilion / Restroom & Concession / Monuments

Ballfield 4-Plex



Multi-Use Fields



Pickleball & Tennis



Amphitheater



Playground

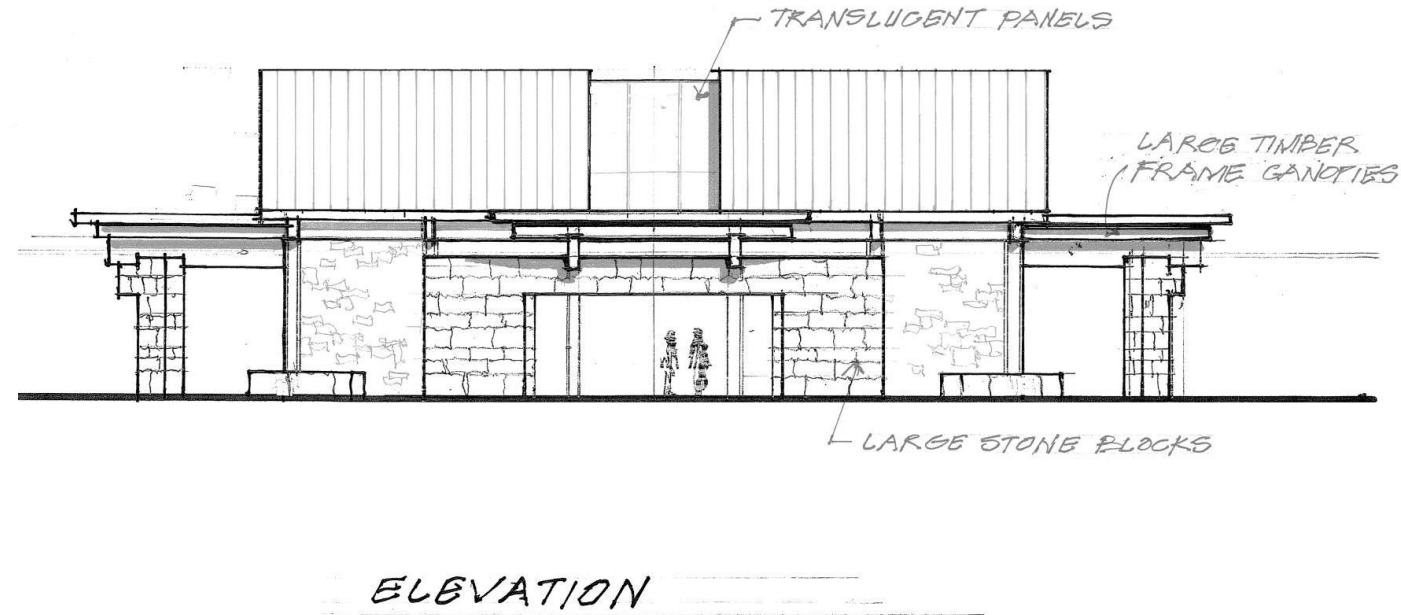
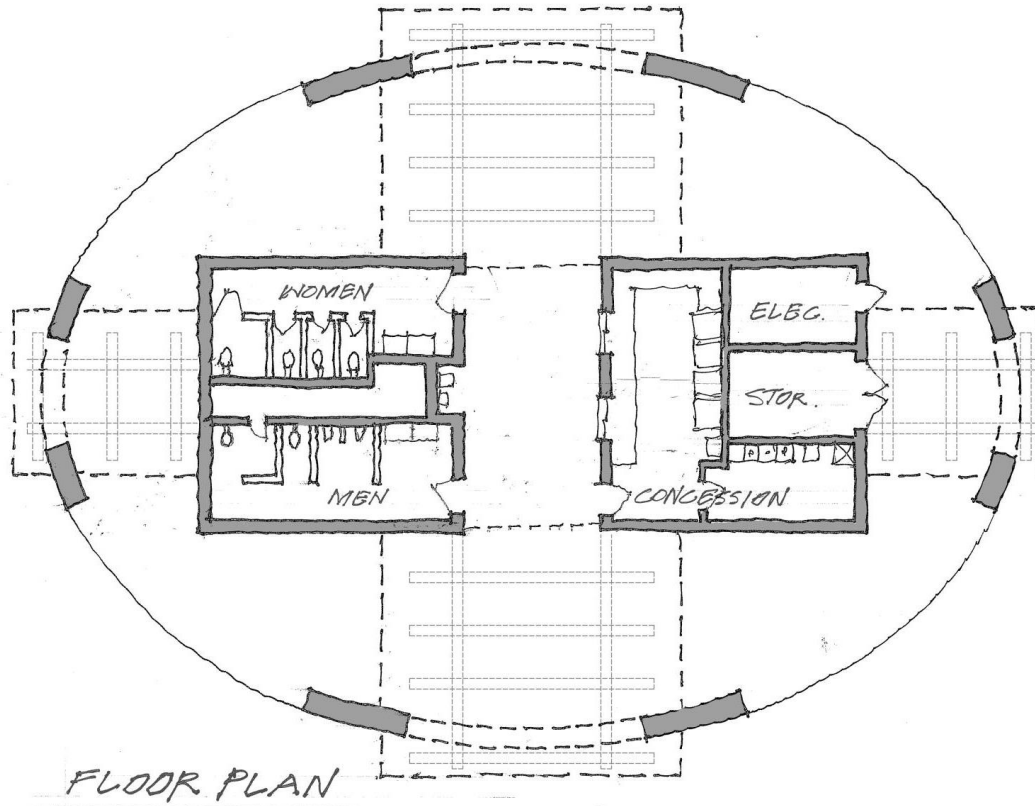


Hike & Bike Trails

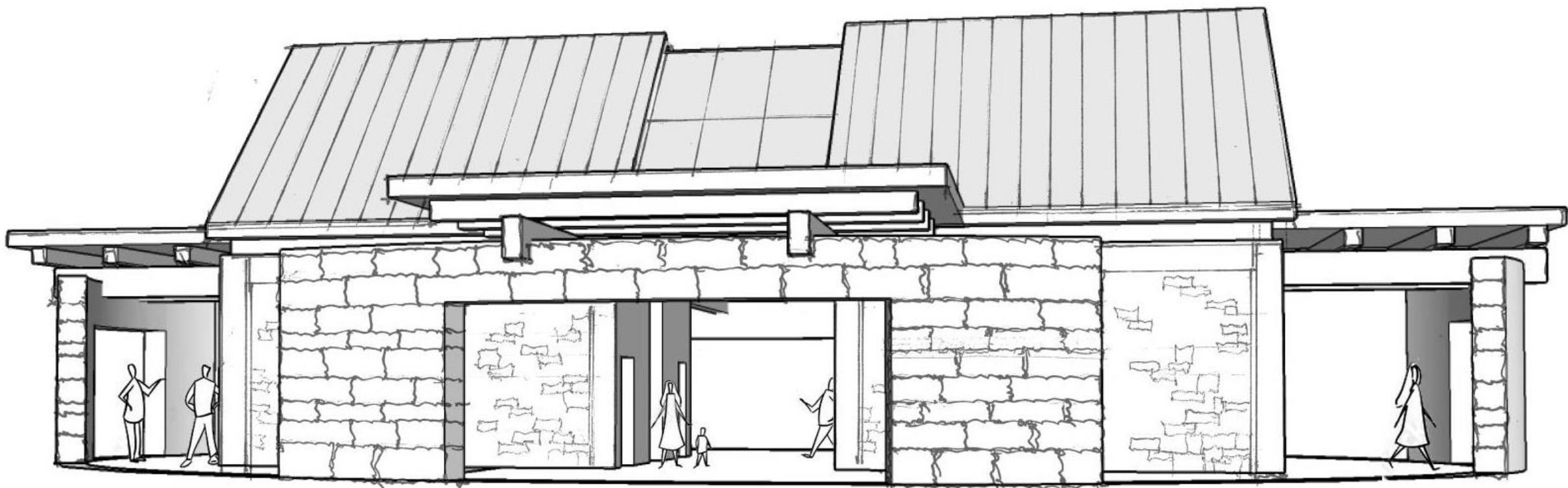


Identity Monuments

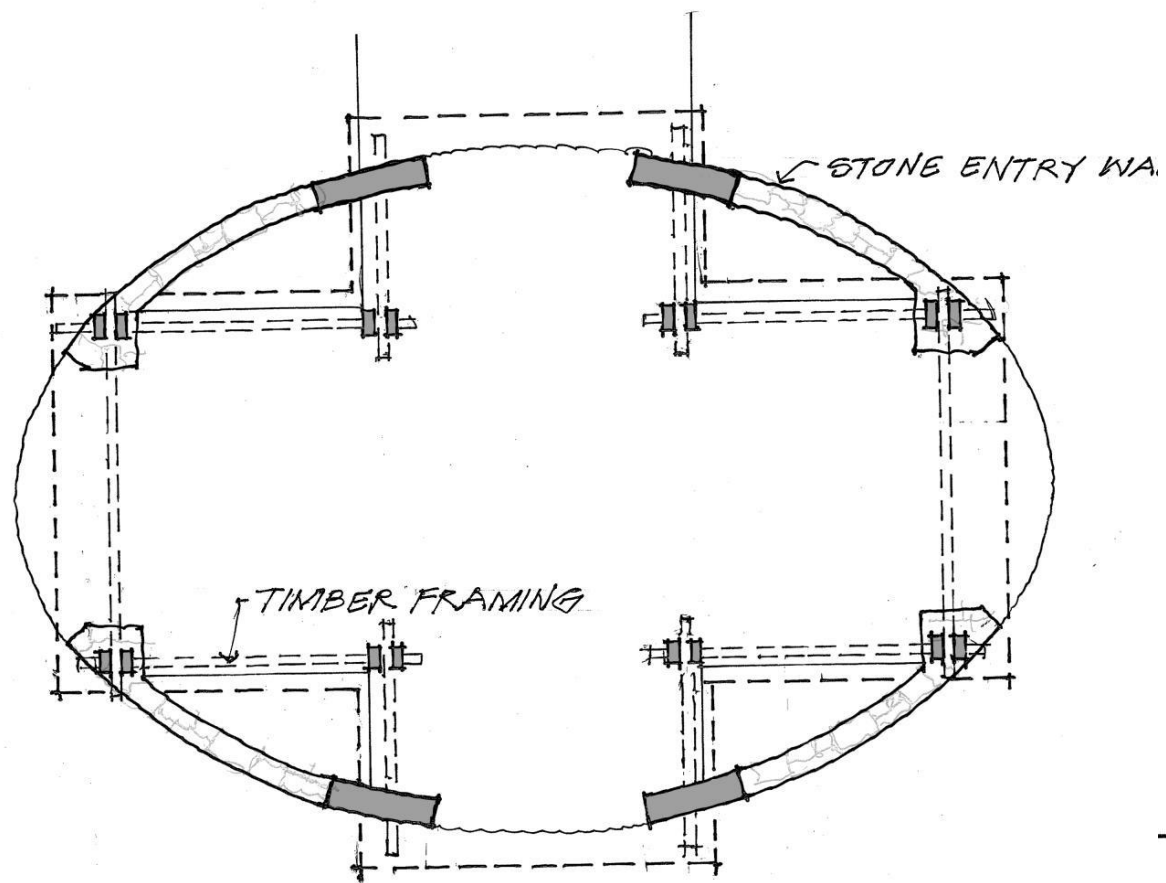




Restroom & Concession



Restroom & Concession



FLOOR PLAN



Translucent Panels



Large Stone Veneer



Standing Seam
Metal Roofing



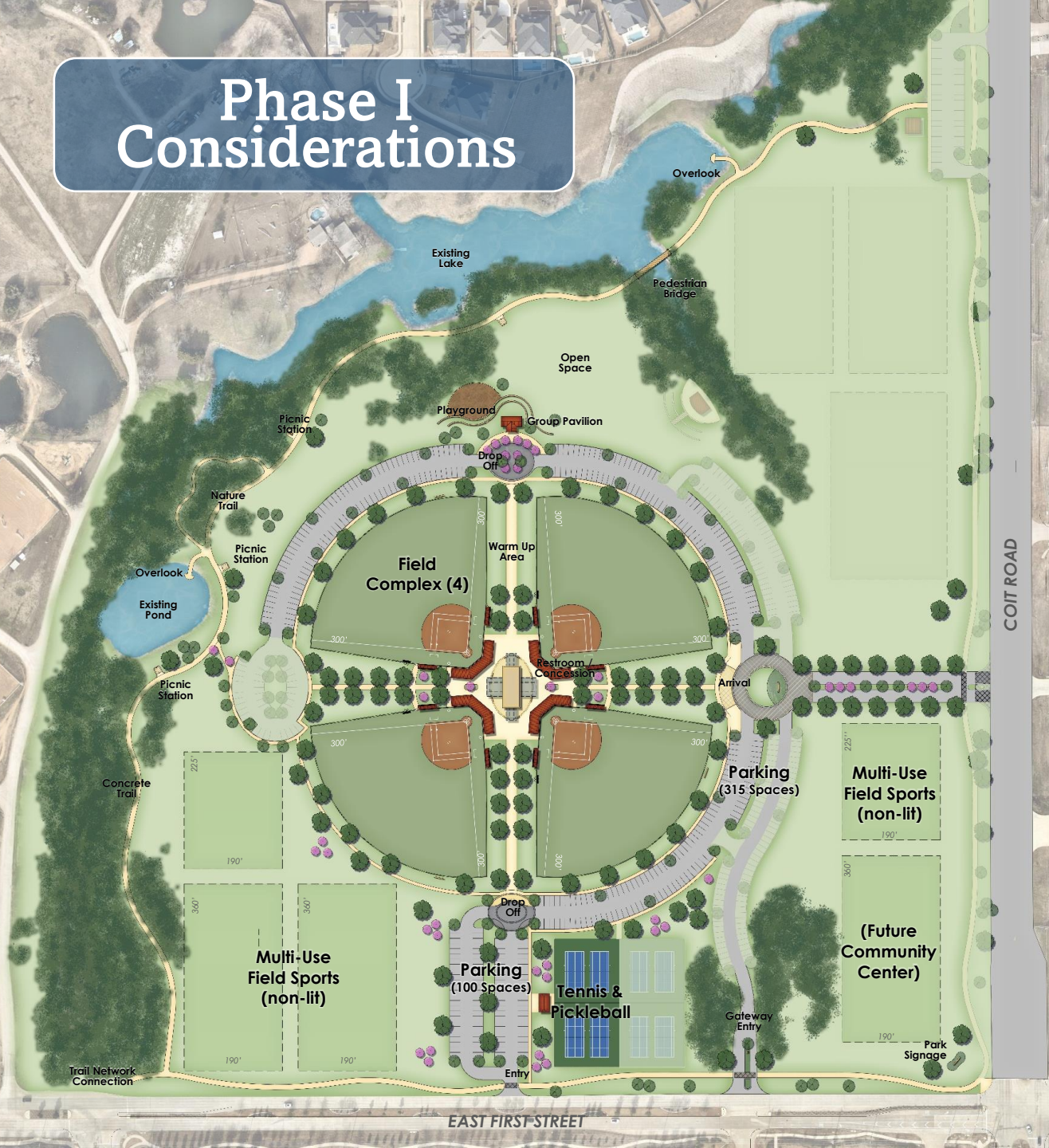
ELEVATION

Large Group Pavilion



Large Group Pavilion

Phase I Considerations



Projected Budget – Phase I

GENERAL SITE ITEMS	\$2,000,000
OVERALL PARK IMPROVEMENTS	\$1,375,000
PARKING & DRIVES (Approx. 415 Spaces)	\$2,900,000
BALLFIELD COMPLEX	\$5,200,000
PARK & PERIMETER TRAILS	\$1,600,000
TENNIS & PICKLEBALL	\$1,000,000
<hr/>	
BASE SUBTOTAL	\$14,075,000
+/- 15% CONTINGENCY	\$2,000,000
<hr/>	
CONSTRUCTION TOTAL	\$16,075,000

Next Steps

A. Topo Survey

B. Phase I Conceptual Alternative

- *Park Board - June 9th*
- *Town Council – June 28th*

C. Schematic Design

D. Design Development

E. Final Construction Documents

F. Bid Phase

G. Construction Phase

