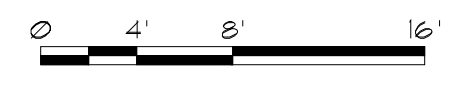


1 NORTH ELEVATION
SCALE: 1/8" = 1'-0"

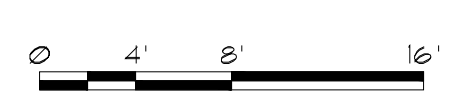


MATERIAL CALCULATIONS:

THIN STONE VENEER (CYPRESS POINT)	1,110 SQ. FT. (27%)
FIBER CEMENT BOARD (TOBACCO)	501 SQ. FT. (12%)
E.I.F.S. (SW7627 WHITE HERON):	446 SQ. FT. (11%)
E.I.F.S. (SW7104 COTTON WHITE):	80 SQ. FT. (2%)
E.I.F.S. (SW7525 TREE BRANCH):	821 SQ. FT. (20%)
GLAZING (STORE FRONT)	1,039 SQ. FT. (26%)
MISC. (DOORS, COPING)	92 SQ. FT. (2%)
FACADE TOTAL:	4,089 SQ. FT.

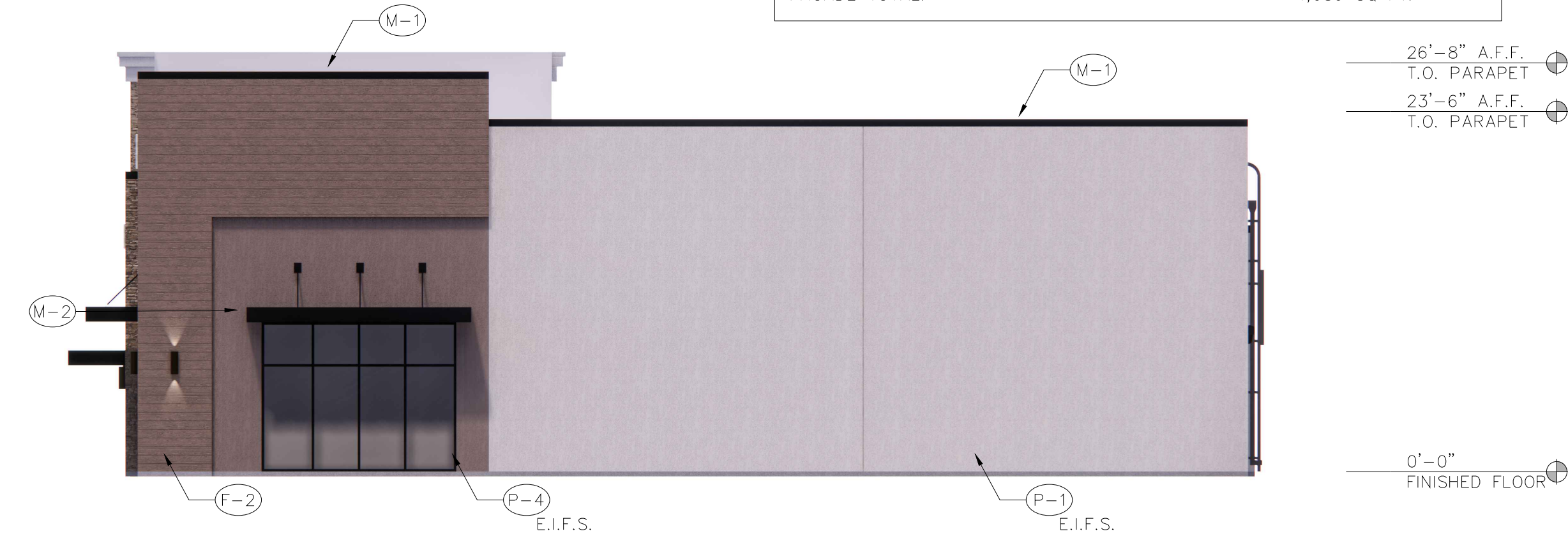


2 EAST ELEVATION
SCALE: 1/8" = 1'-0"

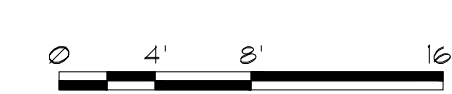


MATERIAL CALCULATIONS:

THIN STONE VENEER (CYPRESS POINT)	312 SQ. FT. (17%)
FIBER CEMENT BOARD (TOBACCO)	309 SQ. FT. (16%)
E.I.F.S. (SW7627 WHITE HERON):	636 SQ. FT. (34%)
E.I.F.S. (SW7104 COTTON WHITE):	59 SQ. FT. (3%)
E.I.F.S. (SW7525 TREE BRANCH):	325 SQ. FT. (17%)
GLAZING (STORE FRONT)	208 SQ. FT. (11%)
MISC. (DOORS, COPING)	34 SQ. FT. (2%)
FACADE TOTAL:	1,883 SQ. FT.



3 WEST ELEVATION
SCALE: 1/8" = 1'-0"

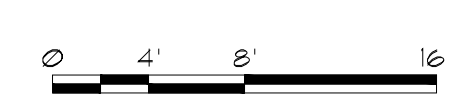


MATERIAL CALCULATIONS:

FIBER CEMENT BOARD (TOBACCO)	300 SQ. FT. (17%)
E.I.F.S. (SW7627 WHITE HERON):	1,155 SQ. FT. (64%)
E.I.F.S. (SW7525 TREE BRANCH):	184 SQ. FT. (10%)
GLAZING (STORE FRONT)	130 SQ. FT. (7%)
MISC. (DOORS, COPING)	37 SQ. FT. (2%)
FACADE TOTAL:	1,806 SQ. FT.



4 SOUTH ELEVATION
SCALE: 1/8" = 1'-0"



MATERIAL CALCULATIONS:

THIN STONE VENEER (CYPRESS POINT)	45 SQ. FT. (1%)
FIBER CEMENT BOARD (TOBACCO)	73 SQ. FT. (2%)
E.I.F.S. (SW7627 WHITE HERON):	3,358 SQ. FT. (90%)
MISC. (DOORS, COPING)	268 SQ. FT. (7%)
FACADE TOTAL:	3,744 SQ. FT.

EXTERIOR FINISH SCHEDULE

NUMBER	TYPE	DETAIL DESCRIPTION
(F-1)	THIN STONE VENEER	MANUFACTURER: ELDORADO STYLE: ARTISAN LEDGE COLOR: CYPRESS POINT
(F-2)	CEMENTITIOUS PANEL	MANUFACTURER: NICHHA STYLE: WOOD SERIES - ROUGHSAWN COLOR: TOBACCO
(P-1)	PAINT FINISH	MANUFACTURER: SHERWIN WILLIAMS COLOR: WHITE HERON (SW 7627)
(P-2)	PAINT FINISH	MANUFACTURER: SHERWIN WILLIAMS COLOR: COTTON WHITE (SW 7104)
(P-3)	PAINT FINISH	MANUFACTURER: SHERWIN WILLIAMS COLOR: GAUNTLET GRAY (SW 7019)
(P-4)	PAINT FINISH	MANUFACTURER: SHERWIN WILLIAMS COLOR: TREE BRANCH (SW7525)
(M-1)	PRE-FINISHED PARAPET CAP	COLOR: BLACK
(M-2)	PRE-FINISHED METAL AWNING	MANUFACTURER: ARCH FAB HELIOS CANOPY COLOR: BLACK
	DOWNSPOUT & GUTTER	COLOR: GAUNTLET GRAY (SW 7019)
	ALUMINUM STOREFRONT	MANUFACTURER: KAWNEER COLOR: BLACK
	ROOF ACCESS LADDER	COLOR: GAUNTLET GRAY (SW 7019)

PRELIMINARY
NOT TO BE USED
FOR
REGULATORY
APPROVAL,
PERMITTING OR
CONSTRUCTION



MT SHELL BUILDING #1
NORTH COLEMAN STREET & PROSPER TRAIL
PROSPER, TEXAS

Revisions:

File Name: 23156-A2.0	Project No: 23156	Date: 07/10/2023	Drawn By: RCA	Checked By: TI
-----------------------	-------------------	------------------	---------------	----------------

SHEET
A2.0
EXTERIOR ELEVATIONS



PRELIMINARY
NOT TO BE USED
FOR
REGULATORY
APPROVAL,
PERMITTING OR
CONSTRUCTION



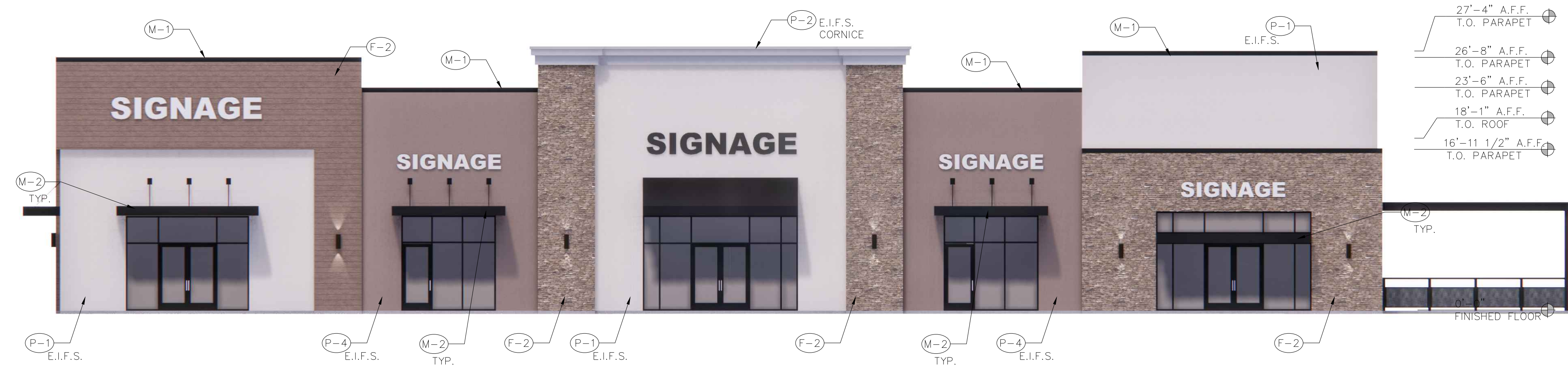
MT SHELL BUILDING #1
NORTH COLEMAN STREET & PROSPER TRAIL
PROSPER, TEXAS

Revisions:

File Name: 23156 - A2.1	Project No: 23156
Date: 07/10/2023	Drawn By: DBL
Checked By: TI	

1 PERSPECTIVE
NOT TO SCALE

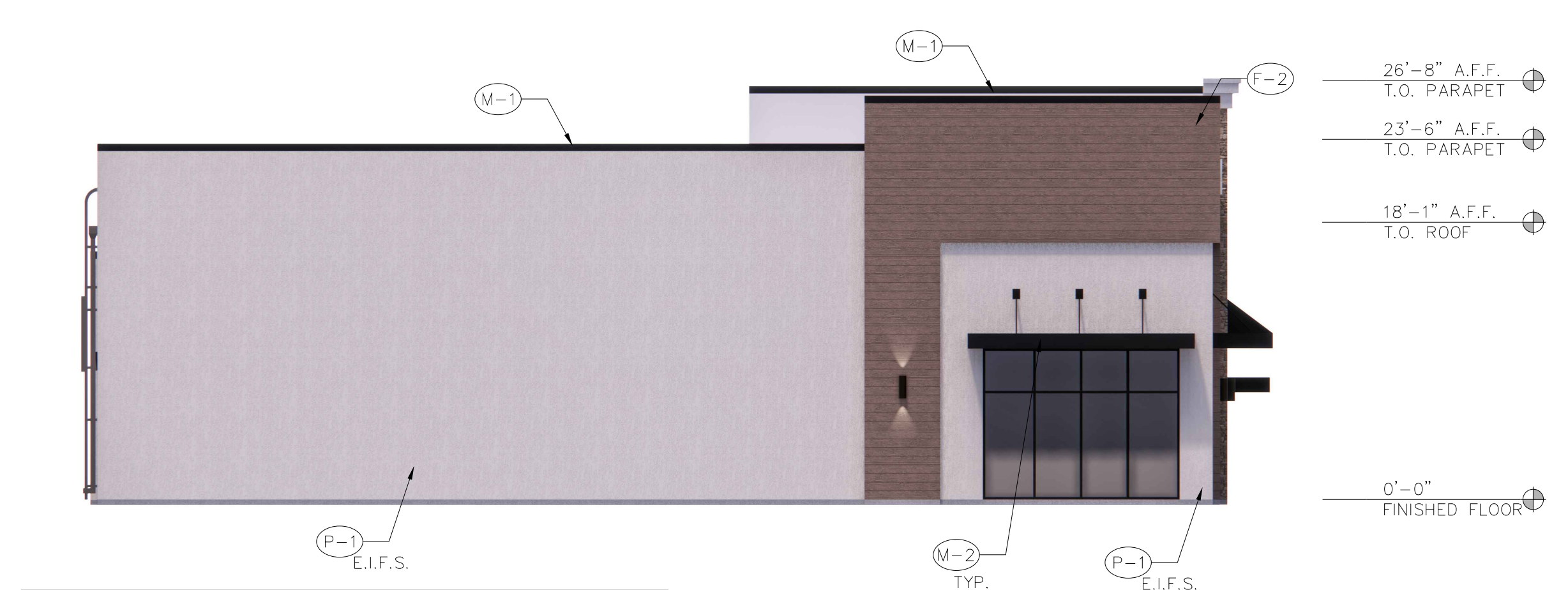
SHEET
A2.1
PERSPECTIVE



MATERIAL CALCULATIONS:

THIN STONE VENEER (CYPRESS POINT)	662 SQ. FT. (18%)
FIBER CEMENT BOARD (TOBACCO)	385 SQ. FT. (10%)
E.I.F.S. (SW7627 WHITE HERON):	1,159 SQ. FT. (32%)
E.I.F.S. (SW7104 COTTON WHITE):	80 SQ. FT. (2%)
E.I.F.S. (SW7525 TREE BRANCH):	670 SQ. FT. (20%)
GLAZING (STORE FRONT)	649 SQ. FT. (20%)
MISC. (DOORS, COPING)	72 SW. FT. (2%)
FACADE TOTAL:	3,677 SQ. FT.

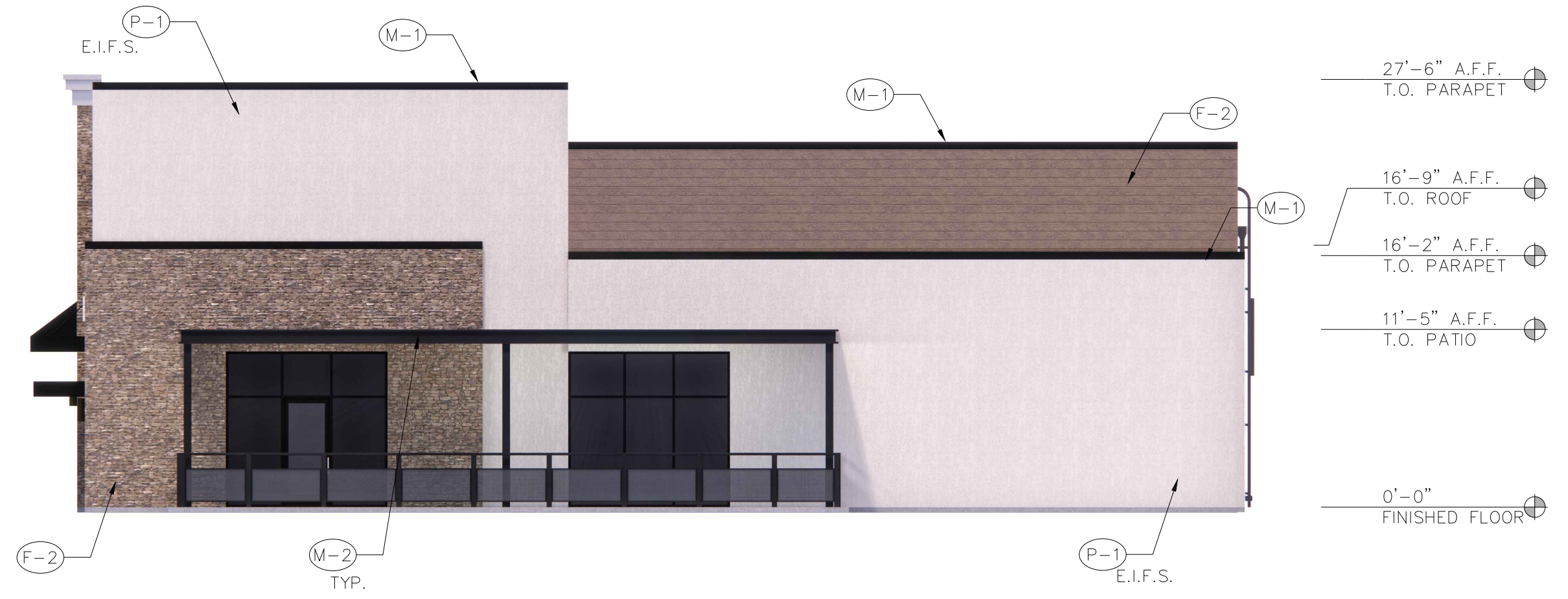
1 NORTH ELEVATION
SCALE: 1/8" = 1'-0"
0' 4' 8' 16'



MATERIAL CALCULATIONS:

THIN STONE VENEER (CYPRESS POINT)	312 SQ. FT. (5%)
FIBER CEMENT BOARD (TOBACCO)	305 SQ. FT. (8%)
E.I.F.S. (SW7627 WHITE HERON):	446 SQ. FT. (21%)
MISC. (DOORS, COPING):	38 SQ. FT. (18%)
GLAZING (STORE FRONT)	129 SQ. FT. (33%)
FACADE TOTAL:	1,034 SQ. FT.

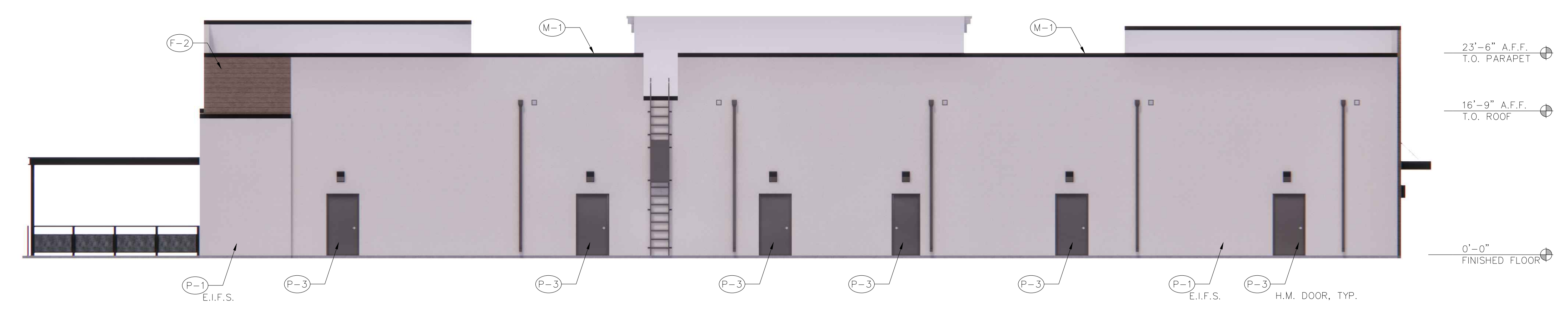
2 EAST ELEVATION
SCALE: 1/8" = 1'-0"
0' 4' 8' 16'



MATERIAL CALCULATIONS:

THIN STONE VENEER (CYPRESS POINT)	297 SQ. FT. (5%)
FIBER CEMENT BOARD (TOBACCO)	229 SQ. FT. (8%)
E.I.F.S. (SW7627 WHITE HERON):	1,046 SQ. FT. (21%)
GLAZING (STORE FRONT)	208 SQ. FT. (33%)
MISC. (DOORS, COPING)	100 SQ. FT. (2%)
FACADE TOTAL:	1,880 SQ. FT.

3 WEST ELEVATION
SCALE: 1/8" = 1'-0"
0' 4' 8' 16'



MATERIAL CALCULATIONS:

FIBER CEMENT BOARD (TOBACCO)	73 SQ. FT. (2%)
E.I.F.S. (SW7627 WHITE HERON):	2,961 SQ. FT. (91%)
MISC. (DOORS, COPING)	233 SQ. FT. (7%)
FACADE TOTAL:	3,267 SQ. FT.

4 SOUTH ELEVATION
SCALE: 1/8" = 1'-0"
0' 4' 8' 16'

EXTERIOR FINISH SCHEDULE

NUMBER	TYPE	DETAIL DESCRIPTION
(F-1)	THIN STONE VENEER	MANUFACTURER: ELDORADO STYLE: ARTISAN LEDGE COLOR: CYPRESS POINT
(F-2)	CEMENTITIOUS PANEL	MANUFACTURER: NICHHA STYLE: WOOD SERIES - ROUGHSAWN COLOR: TOBACCO
(P-1)	PAINT FINISH	MANUFACTURER: SHERWIN WILLIAMS COLOR: WHITE HERON (SW 7627)
(P-2)	PAINT FINISH	MANUFACTURER: SHERWIN WILLIAMS COLOR: COTTON WHITE (SW 7104)
(P-3)	PAINT FINISH	MANUFACTURER: SHERWIN WILLIAMS COLOR: GAUNTLET GRAY (SW 7019)
(P-4)	PAINT FINISH	MANUFACTURER: SHERWIN WILLIAMS COLOR: TREE BRANCH (SW7525)
(M-1)	PRE-FINISHED PARAPET CAP	COLOR: BLACK
(M-2)	PRE-FINISHED METAL AWNING	MANUFACTURER: ARCH FAB HELIOS CANOPY COLOR: BLACK
	DOWNSPOUT & GUTTER	COLOR: GAUNTLET GRAY (SW 7019)
	ALUMINUM STOREFRONT	MANUFACTURER: KAWNEER COLOR: BLACK
	ROOF ACCESS LADDER	COLOR: GAUNTLET GRAY (SW 7019)

PRELIMINARY
NOT TO BE USED
FOR
REGULATORY
APPROVAL,
PERMITTING OR
CONSTRUCTION



MT SHELL BUILDING #2
NORTH COLEMAN STREET & PROSPER TRAIL
PROSPER, TEXAS

Revisions:

File Name: 23156-A2.0	Project No: 23156	Date: 07/10/2023	Drawn By: SJR	Checked By: TI
-----------------------	-------------------	------------------	---------------	----------------

SHEET
A2.0
EXTERIOR ELEVATIONS



PRELIMINARY
NOT TO BE USED
FOR
REGULATORY
APPROVAL,
PERMITTING OR
CONSTRUCTION



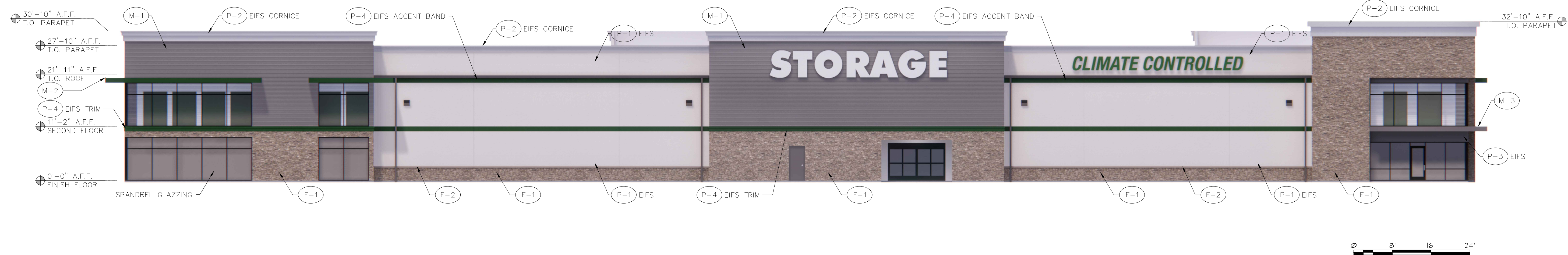
MT SHELL BUILDING #2
NORTH COLEMAN STREET & PROSPER TRAIL
PROSPER, TEXAS

Revisions:

File Name:	23156 - A2.1
Project No:	23156
Date:	07/10/2023
Drawn By:	DBL
Checked By:	TI

1 PERSPECTIVE
NOT TO SCALE

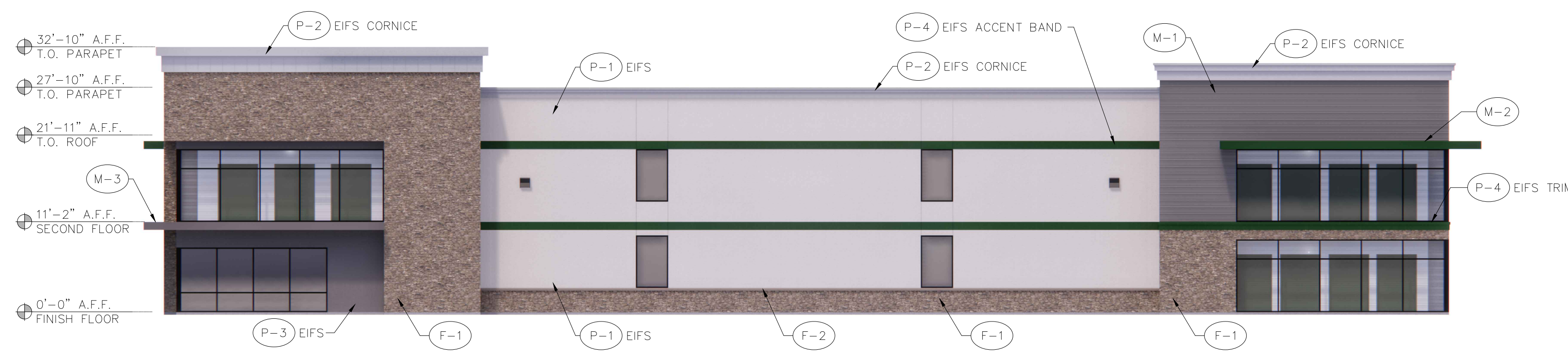
SHEET
A2.1
PERSPECTIVE



MATERIAL CALCULATIONS:

STONE VENEER (CYPRESS POINT):	1,577 SQ. FT. (19%)
METAL PANEL (SLATE GRAY):	1,585 SQ. FT. (19%)
E.I.F.S. (GAUNTLET GRAY SW 7019):	64 SQ. FT. (1%)
E.I.F.S. (COTTON WHITE SW 7104):	536 SQ. FT. (6%)
E.I.F.S. (PROSPER GREEN):	321 SQ. FT. (4%)
E.I.F.S. (WHITE HERON SW 7627):	3,048 SQ. FT. (37%)
STONE WATER TABLE:	44 SQ. FT. (1%)
GLAZING (STORE FRONT)	1,096 SQ. FT. (13%)
FACADE TOTAL:	8,271 SQ. FT.

1 EXTERIOR ELEVATION- SOUTH
SCALE: 3/32" = 1'-0"



MATERIAL CALCULATIONS:

STONE VENEER (CYPRESS POINT):	935 SQ. FT. (20%)
METAL PANEL (SLATE GRAY):	372 SQ. FT. (8%)
E.I.F.S. (GAUNTLET GRAY SW 7019):	138 SQ. FT. (3%)
E.I.F.S. (COTTON WHITE SW 7104):	320 SQ. FT. (7%)
E.I.F.S. (PROSPER GREEN):	168 SQ. FT. (3%)
E.I.F.S. (WHITE HERON SW 7627):	1,813 SQ. FT. (38%)
STONE WATER TABLE:	28 SQ. FT. (1%)
GLAZING (STORE FRONT)	957 SQ. FT. (20%)
FACADE TOTAL:	4,731 SQ. FT.

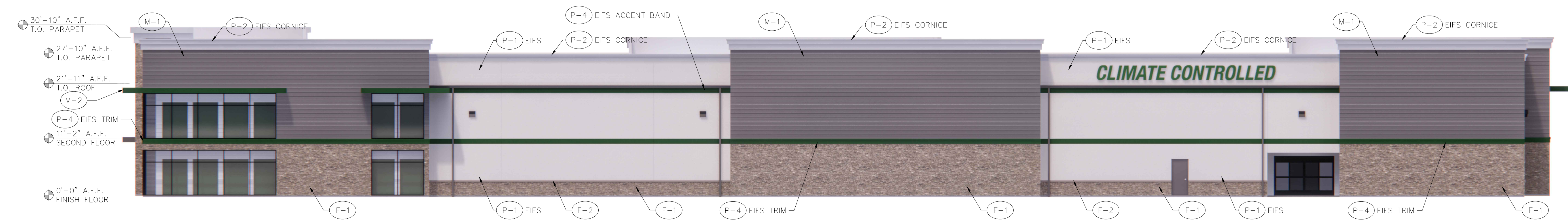
2 EXTERIOR ELEVATION- EAST
SCALE: 3/32" = 1'-0"

EXTERIOR FINISH SCHEDULE

NUMBER	TYPE	DETAIL DESCRIPTION
(F-1)	THIN STONE VENEER	MANUFACTURER: ELDORADO STYLE: ARTISAN LEDGE COLOR: CYPRESS POINT
(F-2)	4" CAST STONE WATER TABLE	COLOR: TO MATCH STACKED STONE BELOW
(P-1)	PAINT FINISH	MANUFACTURER: SHERWIN WILLIAMS COLOR: WHITE HERON (SW 7627)
(P-2)	PAINT FINISH	MANUFACTURER: SHERWIN WILLIAMS COLOR: COTTON WHITE (SW 7104)
(P-3)	PAINT FINISH	MANUFACTURER: SHERWIN WILLIAMS COLOR: GAUNTLET GRAY (SW 7019)
(P-4)	PAINT FINISH	MANUFACTURER: SHERWIN WILLIAMS COLOR: PAINT MATCH- PROSPER HIGH GREEN
(M-1)	HORIZONTAL METAL PANEL	MANUFACTURER: ATAS WALL PANEL SHAPE: 7.2 PANEL COLOR: SLATE GRAY
(M-2)	PRE-FINISHED METAL AWNING	MANUFACTURER: ARCH FAB HELIOS CANOPY COLOR: MATCH- PROSPER HIGH GREEN
(M-3)	PRE-FINISHED METAL AWNING	MANUFACTURER: ARCH FAB HELIOS CANOPY COLOR: GRAY
	DOWNSPOUT & GUTTER	MANUFACTURER: ATAS COLOR: SLATE GRAY
	ALUMINUM STOREFRONT	MANUFACTURER: KAWNEER COLOR: BLACK

Revisions:

File Name: 23141-A2.0	Project No: 23141	Date: 07/11/2023	Drawn By: DBL	Checked By: TI
-----------------------	-------------------	------------------	---------------	----------------

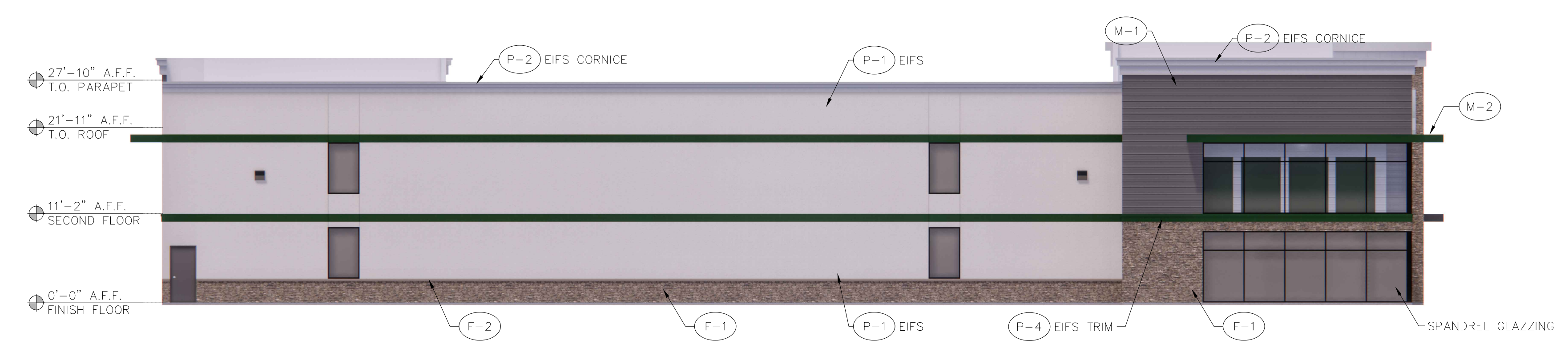


1 EXTERIOR ELEVATION- NORTH
SCALE: 3/32" = 1'-0"



MATERIAL CALCULATIONS:

STONE VENEER (CYPRESS POINT):	1,512 SQ. FT. (19%)
METAL PANEL (SLATE GRAY):	2,314 SQ. FT. (29%)
E.I.F.S. (COTTON WHITE SW 7104):	499 SQ. FT. (6%)
E.I.F.S. (PROSPER GREEN):	380 SQ. FT. (5%)
E.I.F.S. (WHITE HERON SW 7627):	2,554 SQ. FT. (32%)
STONE WATER TABLE:	35 SQ. FT. (1%)
GLAZING (STORE FRONT)	752 SQ. FT. (9%)
FACADE TOTAL:	8,046 SQ. FT.



2 EXTERIOR ELEVATION- WEST
SCALE: 3/32" = 1'-0"



MATERIAL CALCULATIONS:

STONE VENEER (CYPRESS POINT):	426 SQ. FT. (9%)
METAL PANEL (SLATE GRAY):	373 SQ. FT. (8%)
E.I.F.S. (COTTON WHITE SW 7104):	244 SQ. FT. (5%)
E.I.F.S. (PROSPER GREEN):	242 SQ. FT. (5%)
E.I.F.S. (WHITE HERON SW 7627):	2,574 SQ. FT. (57%)
STONE WATER TABLE:	37 SQ. FT. (1%)
GLAZING (STORE FRONT)	576 SQ. FT. (13%)
MISC. (DOORS)	21 SQ. FT. (1%)
FACADE TOTAL:	4,493 SQ. FT.

EXTERIOR FINISH SCHEDULE

NUMBER	TYPE	DETAIL DESCRIPTION
(F-1)	THIN STONE VENEER	MANUFACTURER: ELDORADO STYLE: ARTISAN LEDGE COLOR: CYPRESS POINT
(F-2)	4" CAST STONE WATER TABLE	COLOR: TO MATCH STACKED STONE BELOW
(P-1)	PAINT FINISH	MANUFACTURER: SHERWIN WILLIAMS COLOR: WHITE HERON (SW 7627)
(P-2)	PAINT FINISH	MANUFACTURER: SHERWIN WILLIAMS COLOR: COTTON WHITE (SW 7104)
(P-3)	PAINT FINISH	MANUFACTURER: SHERWIN WILLIAMS COLOR: GAUNTLET GRAY (SW 7019)
(P-4)	PAINT FINISH	MANUFACTURER: SHERWIN WILLIAMS COLOR: PAINT MATCH- PROSPER HIGH GREEN
(M-1)	HORIZONTAL METAL PANEL	MANUFACTURER: ATAS WALL PANEL SHAPE: 7.2 PANEL COLOR: SLATE GRAY
(M-2)	PRE-FINISHED METAL AWNING	MANUFACTURER: ARCH FAB HELIOS CANOPY COLOR: MATCH- PROSPER HIGH GREEN
(M-3)	PRE-FINISHED METAL AWNING	MANUFACTURER: ARCH FAB HELIOS CANOPY COLOR: GRAY
	DOWNSPOUT & GUTTER	MANUFACTURER: ATAS COLOR: SLATE GRAY
	ALUMINUM STOREFRONT	MANUFACTURER: KAWNEER COLOR: BLACK



PRELIMINARY
NOT TO BE USED
FOR
REGULATORY
APPROVAL,
PERMITTING OR
CONSTRUCTION



(817) 737-9922
www.Franzarchitects.com

4656 International Plaza, Suite 100
Fort Worth, Texas 76109

SELF STORAGE
NORTH COLEMAN STREET & PROSPER TRAIL
PROSPER, TEXAS

Revisions:

File Name: 23141-A2.2
Project No: 23141
Date: 07/17/2023
Drawn By: DBL
Checked By: TI

1 PERSPECTIVE
NOT TO SCALE

SHEET
A2.2
PERSPECTIVE



PRELIMINARY
NOT TO BE USED
FOR
REGULATORY
APPROVAL,
PERMITTING OR
CONSTRUCTION



(817) 737-9922
www.Franzarchitects.com

SELF STORAGE
NORTH COLEMAN STREET & PROSPER TRAIL
PROSPER, TEXAS

Revisions:

File Name:	23141-A2.3
Project No:	23141
Date:	07/17/2023
Drawn By:	DBL
Checked By:	TI

1 PERSPECTIVE
NOT TO SCALE

SHEET
A2.3
PERSPECTIVE