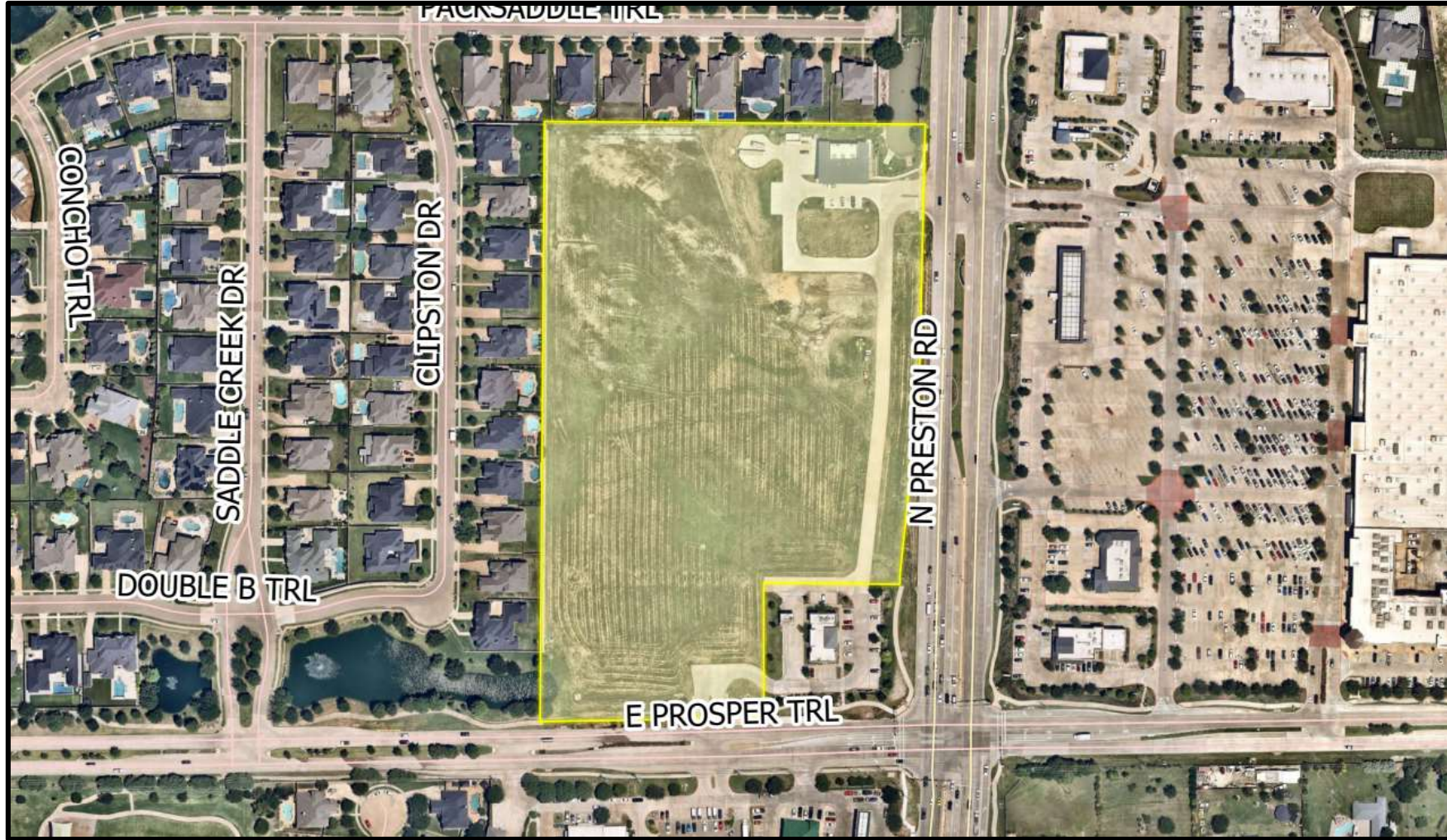


Saddle Creek Commercial,
Block A, Lots 2R and 3
(DEVAPP-25-0088)



Information

Purpose: The applicant requests approval of a preliminary site plan that will create a lot for the dental office and a remainder lot. The lots will consist of the following:

Lot 2R: Five one-story and four two-story buildings.

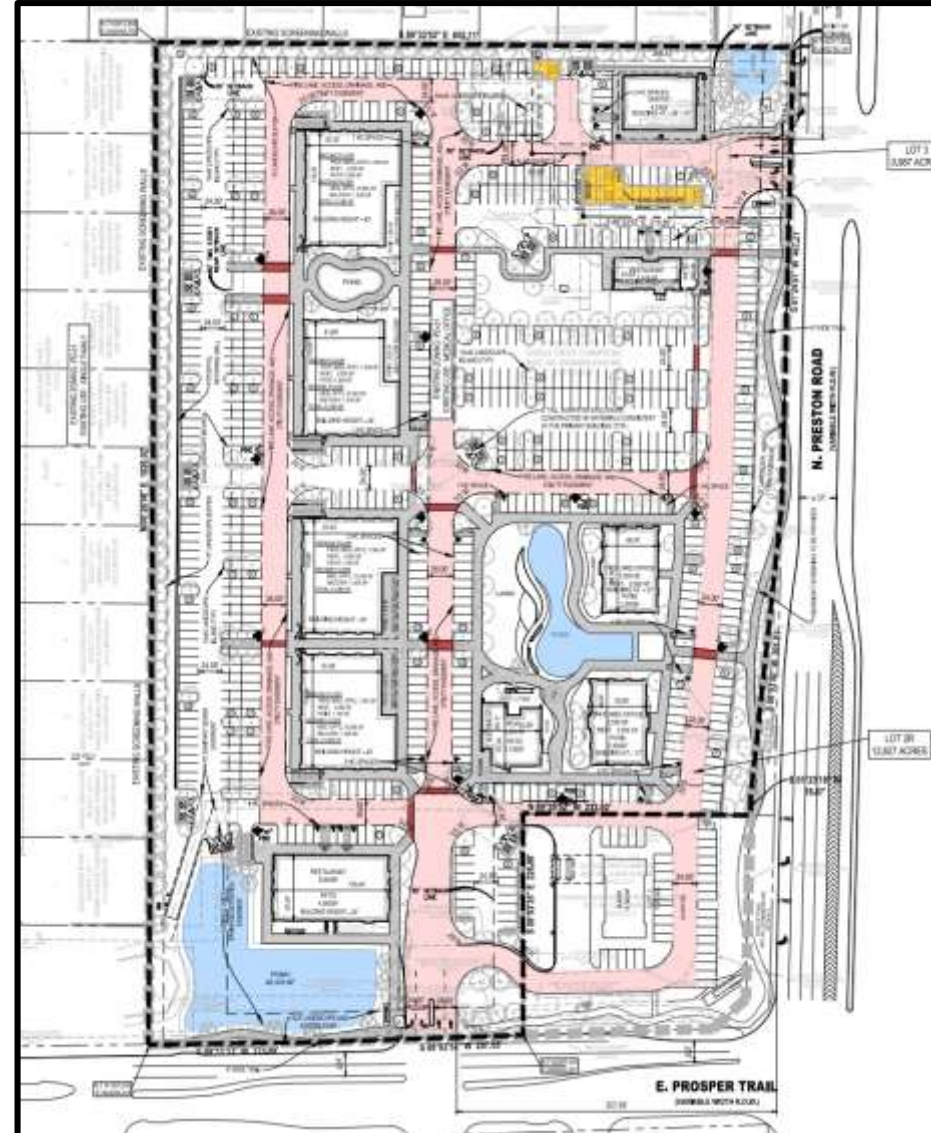
Total of 108,836 square feet.

Proposed office and restaurant uses in compliance with PD-31.

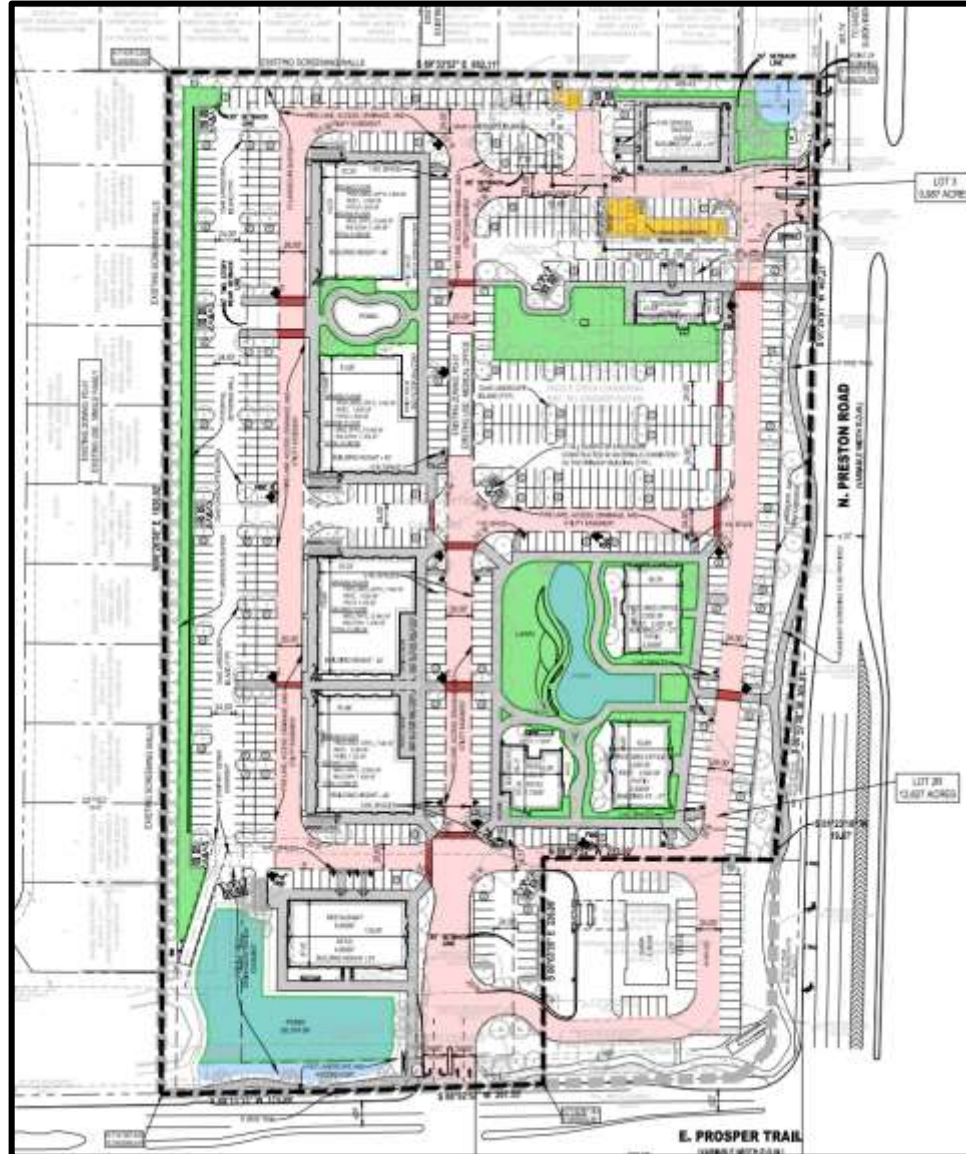
Lot 3: An existing 4,242 square foot dental office.

The parking and drive-aisle configuration around the office will remain until Lot 2R develops.

History: The first preliminary site plan was approved on this property in 2007 (D07-0026). After expiring, the same preliminary site plan layout was approved in 2010 (D10-0011) and then again in 2016 (D15-0098). The last approved plan is included as attachment.



Open Space Plan



Expired Preliminary Site Plan

