

05 WEST ELEVATION

NOTE: ALL ELEVATIONS ARE FOR CONCEPTUAL PURPOSES AND TO CONVEY GENERAL ARCHITECTURAL CHARACTER OF THE BUILDING. ELEVATIONS MAY VARY WITH REGARDS TO OPENING TYPE AND PLACEMENT, BUILDING HEIGHT, MATERIAL PLACEMENT, COLORS, ETC. FINAL ELEVATIONS WILL REMAIN IN SIMILAR ARCHITECTURAL CHARACTER. HEIGHTS QND MATERIALS NOTED ON ELEVATIONS ARE FOR ESTIMATING PURPOSES AND MY VARY DURING DESIGN DEVELOPMENT

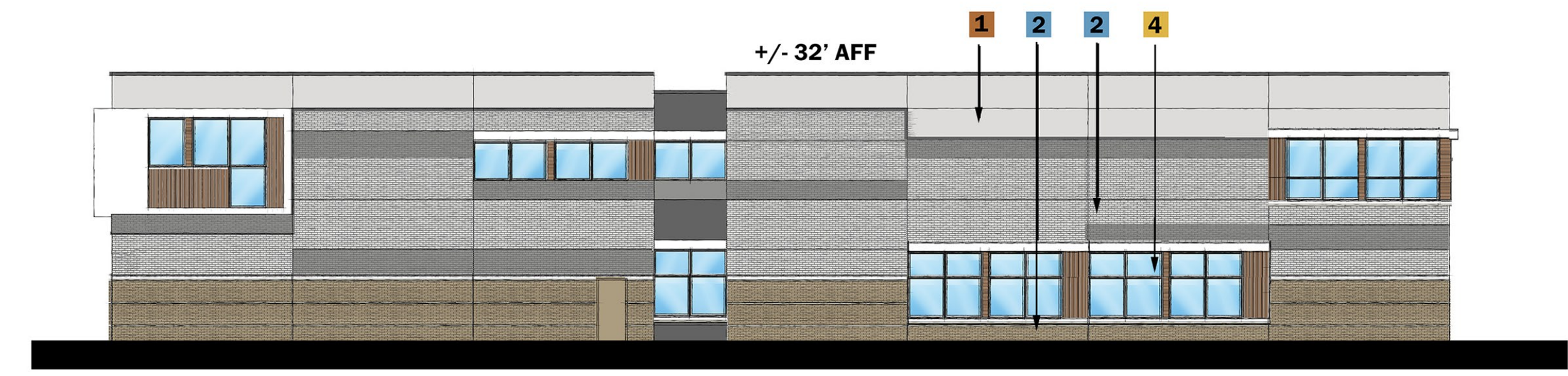
MATERIALS SPORTS FACILITY:
REFERENCE BELOW "MATERIALS LEGEND" FOR MATERIAL DESCRIPTION
TYPE 1 AND TYPE 2 MATERIALS AS NOTED IN MATERIAL LEGEND BELOW

WEST ELEVATION:		EAST ELEVATION:	
MATERIALS	90%	MATERIALS	75%
4 GLASS / OPENINGS	10%	4 GLASS / OPENINGS	25%
GROSS (ENTIRE FACADE)	100%	GROSS (ENTIRE FACADE)	100%
1 2 PRIMARY MATERIALS	85% 40% TYPE 1 45% TYPE 2	1 2 PRIMARY MATERIALS	90% 40% TYPE 1 50% TYPE 2
3 SECONDARY MATERIALS	15%	3 SECONDARY MATERIALS	10%
NET (FACADE WITHOUR OPENINGS)	100%	NET (FACADE WITHOUR OPENINGS)	100%

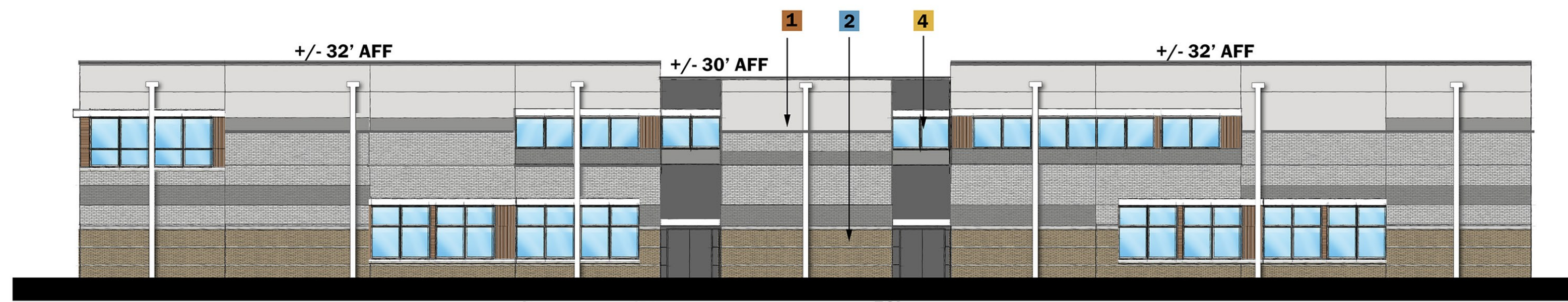
SOUTH ELEVATION:		NORTH ELEVATION:	
MATERIALS	75%	MATERIALS	90%
4 GLASS / OPENINGS	25%	4 GLASS / OPENINGS	10%
GROSS (ENTIRE FACADE)	100%	GROSS (ENTIRE FACADE)	100%
1 2 PRIMARY MATERIALS	90% 40% TYPE 1 45% TYPE 2	1 2 PRIMARY MATERIALS	85% 40% TYPE 1 45% TYPE 2
3 SECONDARY MATERIALS	10%	3 SECONDARY MATERIALS	15%
NET (FACADE WITHOUR OPENINGS)	100%	NET (FACADE WITHOUR OPENINGS)	100%

MATERIAL LEGEND:
 1 - TEXTURE PAINT: CONCRETE TILTWALL (40% MAX), CMU (SPORTS FACILITY ONLY)
 2 - MASONRY: BRICK, STONE
 3 - ARCHITECTURAL MATERIAL: STUCCO, METAL PANEL, SIMULATED WOOD
 4 - OPENINGS: DOORS, WINDOWS, STOREFRONT

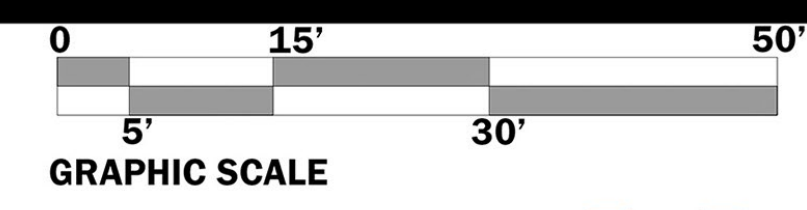
PRIMARY MATERIAL 85% MIN.
 SECONDARY MATERIAL 15% MAX.



06 SOUTH ELEVATION



07 EAST ELEVATION



08 NORTH ELEVATION

SOUTH ELEVATION:		EAST ELEVATION:		NORTH ELEVATION:		WEST ELEVATION:	
MATERIALS	70%	MATERIALS	75%	MATERIALS	75%	MATERIALS	70%
4 GLASS / OPENINGS	30%	4 GLASS / OPENINGS	25%	4 GLASS / OPENINGS	25%	4 GLASS / OPENINGS	30%
GROSS (ENTIRE FACADE)	100%	GROSS (ENTIRE FACADE)	100%	GROSS (ENTIRE FACADE)	100%	GROSS (ENTIRE FACADE)	100%
1 2 PRIMARY MATERIALS	90%	1 2 PRIMARY MATERIALS	85%	1 2 PRIMARY MATERIALS	85%	1 2 PRIMARY MATERIALS	90%
3 SECONDARY MATERIALS	10%	3 SECONDARY MATERIALS	15%	3 SECONDARY MATERIALS	15%	3 SECONDARY MATERIALS	10%
NET (FACADE WITHOUR OPENINGS)	100%	NET (FACADE WITHOUR OPENINGS)	100%	NET (FACADE WITHOUR OPENINGS)	100%	NET (FACADE WITHOUR OPENINGS)	100%

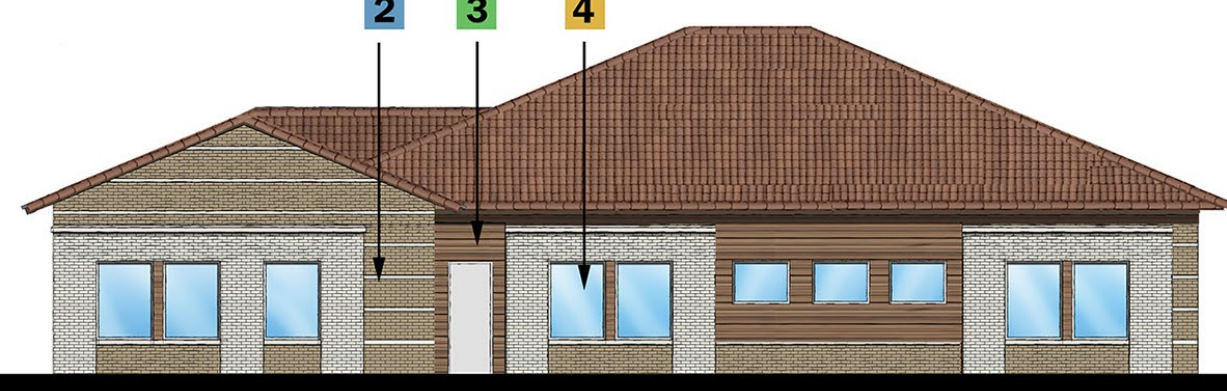
NOTE: MATERIAL CALCULATIONS ARE TO ESTIMATE EAVE HEIGHT AND DO NOT INCLUDE ROOFING



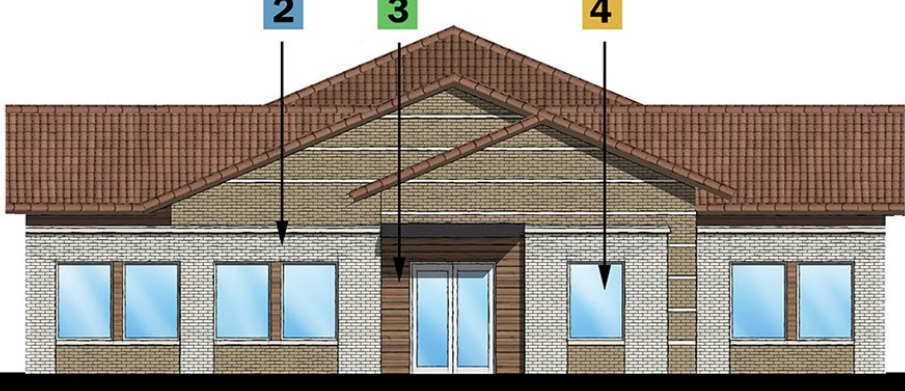
01 WEST ELEVATION



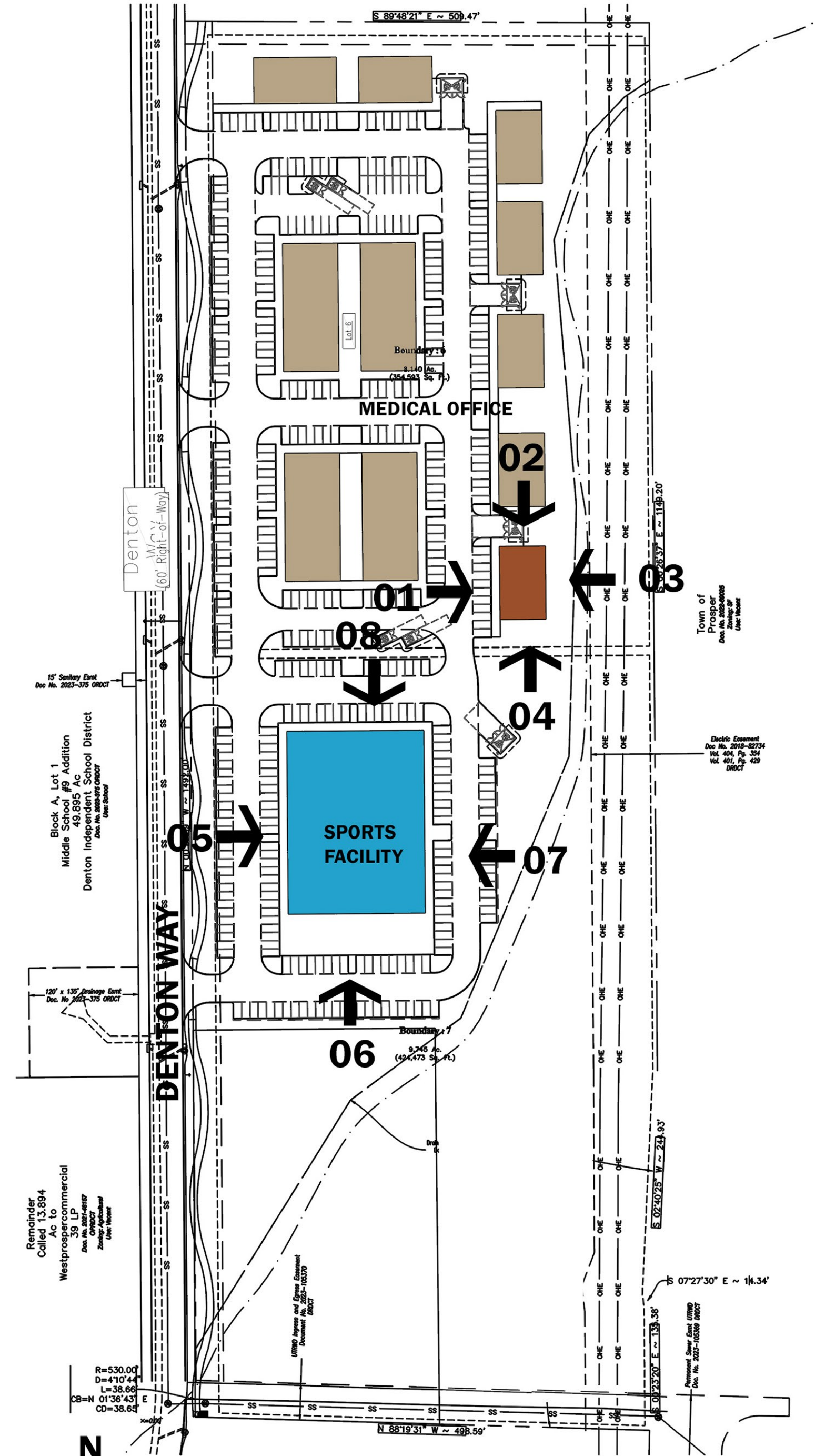
02 NORTH ELEVATION



03 EAST ELEVATION



04 SOUTH ELEVATION



SITE KEY

TOWN CASE NO. ZONE-25-0007
 EXHIBIT F
DENTON WAY OFFICE PARK
 IN THE TOWN OF PROSPER, DENTON COUNTY, TEXAS
 J. MORTON SURVEY ABSTRACT NO. 793
 779,070 Sq. Ft./17.885 Acres

ENGINEER / SURVEYOR / APPLICANT Spars Engineering, Inc. 501 W President George Bush Hwy, Suite 200 Richardson, TX 75243 Telephone: (972) 422-0077 TBPE No. F-2121 Contact: Karis Smith	ARCHITECT Hodges Architecture 13642 Omega Rd Dallas, TX 75244 Telephone: (972) 387-1000 Contact: Trey Swindle	OWNER / DEVELOPER Prosper Denton Commercial 1720 Lewis Crossing Keller, TX 76248 Telephone: (210) 452-8025 Contact: Phani Chennupati
---	---	--



**DENTON WAY OFFICE PARK
 CONCEPT ELEVATION**

MATERIAL LEGEND:
 PRIMARY MATERIAL 85% MIN. → 2 - MASONRY: BRICK, STONE
 SECONDARY MATERIAL 15% MAX. → 3 - ARCHITECTURAL MATERIAL: STUCCO, METAL PANEL, SIMULATED WOOD
 4 - OPENING: DOORS, WINDOWS, STOREFRONT