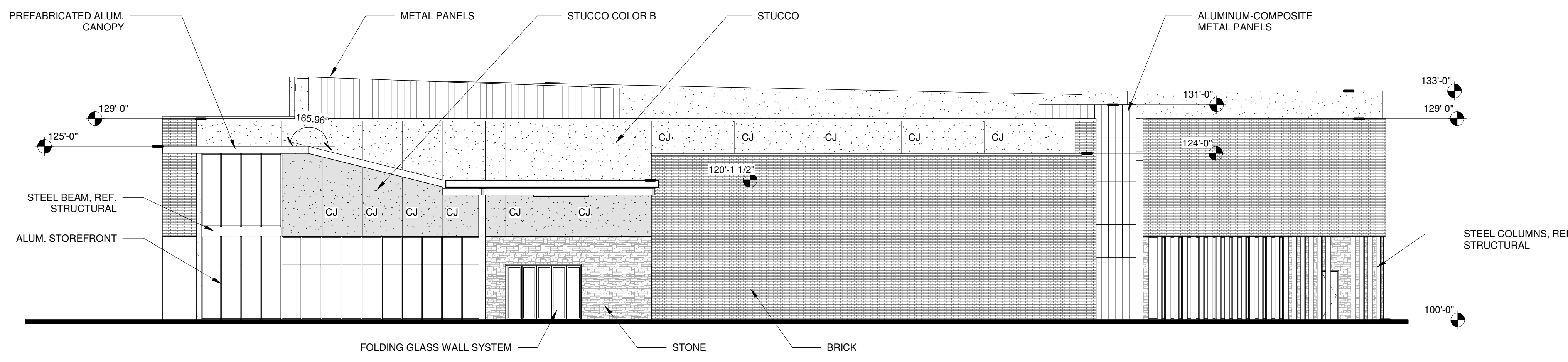




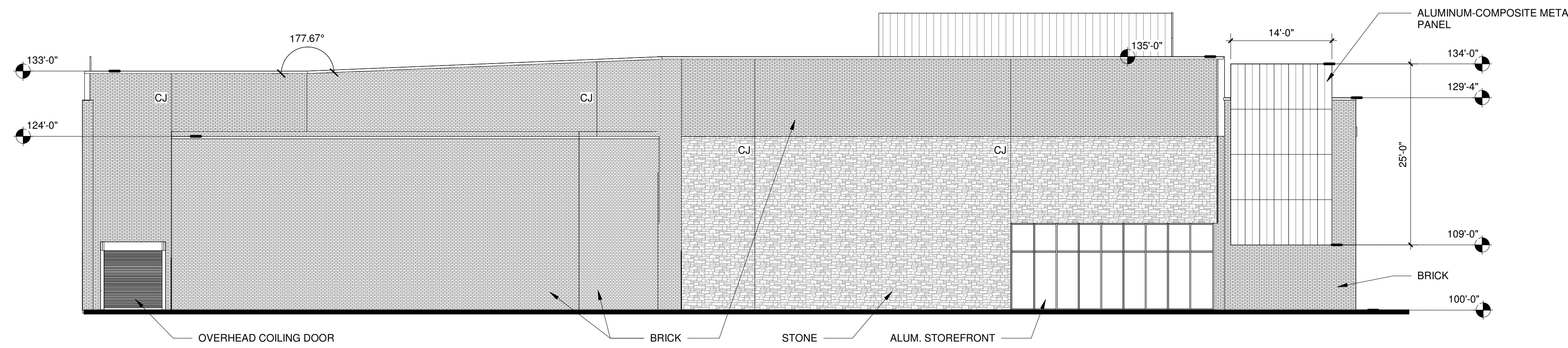
Revision Schedule		
Rev. #	Revision Description	Revision Date

EXTERIOR MATERIAL CALCULATIONS			
SOUTH ELEVATION:	NORTH ELEVATION:	WEST ELEVATION:	EAST ELEVATION:
STUCCO 85 SF (1%)	STUCCO 640 SF (7%)	STUCCO -	STUCCO 1,253 SF (31%)
STONE 2,050 SF (28%)	STONE 3,462 SF (37%)	STONE 1,440 SF (25%)	STONE 390 SF (9%)
BRICK 4,616 SF (63%)	BRICK 5,085 SF (55%)	BRICK 3,997 SF (69%)	BRICK 2,230 SF (57%)
METAL PANEL 571 SF (8%)	METAL PANEL 55 SF (1%)	METAL PANEL 350 SF (6%)	BRICK METAL PANEL 140 SF (3%)
TOTAL = 7,302 SF	TOTAL = 9,242 SF	TOTAL = 5,787 SF	TOTAL = 4,013 SF



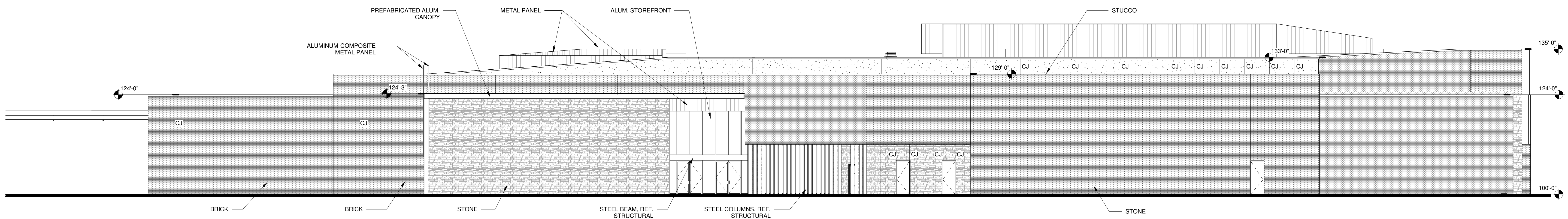
4 EXTERIOR ELEVATION - EAST

A310 3/32" = 1'-0"



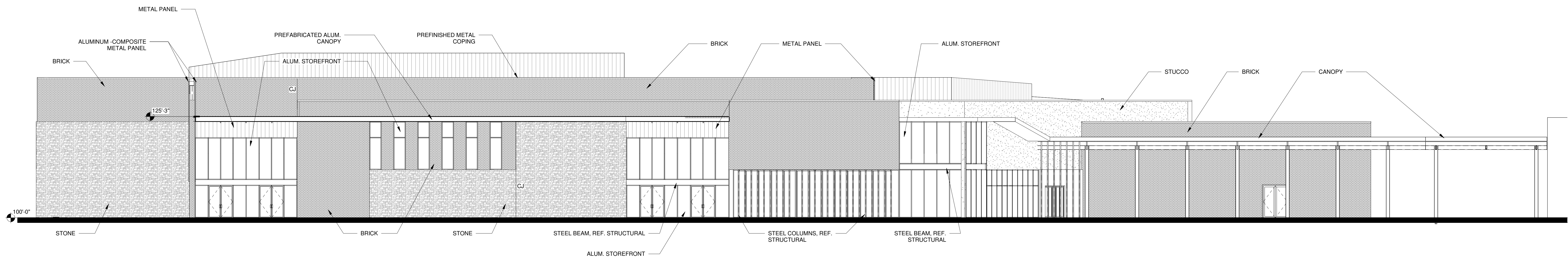
3 EXTERIOR ELEVATION - WEST

A310 3/32" = 1'-0"



2 EXTERIOR ELEVATION - NORTH

A310 3/32" = 1'-0"



1 EXTERIOR ELEVATION - SOUTH

A310 3/32" = 1'-0"

ZONE-23-0030

NOT TO BE USED FOR PERMITTING,
OR CONSTRUCTION

ANDREW OXLEY

THE ARCHITECT AND THE ARCHITECTS CONSULTANTS SHALL BE DEEMED THE AUTHOR AND OWNER OF THESE REPRESENTATIONS OF DESIGN, INCLUDING THE DRAWINGS AND SPECIFICATIONS, AND SHALL BE RESPONSIBLE FOR THE ACCURACY AND COMPLETENESS OF THE INFORMATION PROVIDED TO THE ARCHITECT AND ARCHITECTS CONSULTANTS. THE ARCHITECT AND ARCHITECTS CONSULTANTS SHALL NOT BE RESPONSIBLE FOR THE ACCURACY AND COMPLETENESS OF THE INFORMATION PROVIDED TO THE ARCHITECT AND ARCHITECTS CONSULTANTS BY OTHERS. THE ARCHITECT AND ARCHITECTS CONSULTANTS SHALL NOT BE RESPONSIBLE FOR THE ACCURACY AND COMPLETENESS OF THE INFORMATION PROVIDED TO THE ARCHITECT AND ARCHITECTS CONSULTANTS BY OTHERS. THE ARCHITECT AND ARCHITECTS CONSULTANTS SHALL NOT BE RESPONSIBLE FOR THE ACCURACY AND COMPLETENESS OF THE INFORMATION PROVIDED TO THE ARCHITECT AND ARCHITECTS CONSULTANTS BY OTHERS.

ROCK CREEK CHURCH

2860 W. FIRST STREET
PROSPER, TEXAS 75078

EXTERIOR ELEVATIONS

A310

2023.008
NOVEMBER 20, 2023