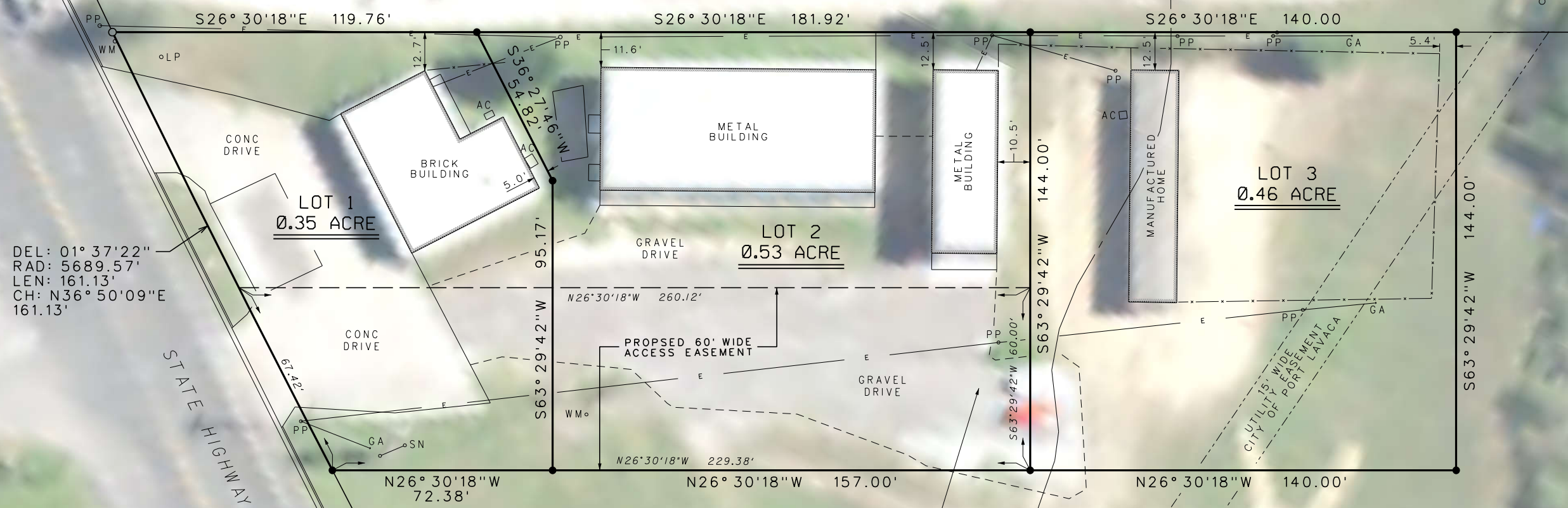
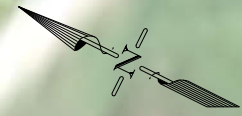


RUBIN JOHN RIGGINS
AND MARY LOIS CAMPOS
DOC. NO. 105557 O.R.
REMAINDER OF 4 ACRES



DEL: 01° 37' 22"
RAD: 5689.57'
LEN: 161.13'
CH: N36° 50' 09"E
161.13'

STATE HIGHWAY 238

BASED ON GRAPHIC REPRESENTATION OF AND ACCORDING TO THE FLOOD INSURANCE RATE MAP (FIRM) FOR CALHOUN COUNTY, TEXAS, COMMUNITY PANEL NUMBER 48057C0185E, MAP EFFECTIVE OCTOBER 16, 2014, THE SUBJECT PROPERTY IS LOCATED PARTIALLY IN ZONE AE (EL. 12 FT.) AND PARTIALLY IN ZONE X (0.2% CHANCE FLOOD).

WARRANTY DEED WITH VENDOR'S LIEN
LONNIE GRAY AND WIFE,
SANDRA GRAY
TO
HOWLETT'S INC.
SEPTEMBER 25, 1985
VOL. 390, PG. 3 D.R.
REMAINDER OF 7.77 ACRES

LAND USE
LOT 1: COMMERCIAL
LOT 2: COMMERCIAL
LOT 3: RESIDENTIAL

HOWLETT'S SUBDIVISION



GANEM & KELLY SURVEYING, INC.

LAMAR STREET, SUITE 5
POINT COMFORT, TEXAS 77978
(361) 987-2011
FIRM NO. 10080300

DRAWN BY : G.A.G.	SCALE: 1" = 40'
CHECKED BY: G.A.G.	DATE: 07/20/2021
APPROVED BY: G.A.G.	JOB NO. PC21-140

PRELIMINARY SKETCH