

PORT LAVACA CDBG MIT APPLICATION PACKAGES

The City of Port Lavaca is giving notice of the City's intent to submit applications to the Texas General Land Office (GLO) for the Texas Community Development Block Grant – Mitigation (CDBG-MIT) Regional Council of Governments (COG) Method of Distribution (MOD) Program. The allocation is for the proposed projects listed below to utilize \$9,116,600 in funding allocated by the Golden Crescent Regional Planning Commission (GCRPC) for long-term recovery efforts.

1. Corporation Ditch Project
2. Harbor of Refuge Restoration Project

The Projects' details can be viewed at the City's website. <https://portlavaca.org/> or Port Lavaca City Hall during regular business hours located at 202 North Virginia, Port Lavaca, Texas, 77979.

The City will receive public comments for fourteen (14) days from September 27, 2023, until October 11, 2023. The public is encouraged to submit comments to Candes Wakeman, KSBR LLC, Grants Administrator, via email at candes@ksbr-ll.com. All input must be received by 5:00pm on October 11, 2023. Comments will be incorporated into the draft application documents, as appropriate, that will mitigate the devastating effects of natural disasters as well ensure the project(s) are in line with environmental regulations, affirmatively further fair housing activities, and, if applicable, minimizing displacement of persons by project activities.

Upon the expiration of this comment period the City will review and address the public comments in the proposed application. For more information, contact Veronica Pauda, KSBR LLC, Grant Administrator at 817-856-9021 or veronica@ksbr-ll.com.

*Although the packages are substantially complete, the cost estimates and scopes of work provided are simply estimates and slight variations in the budget or scope may happen.

Attachments included are:

1. Project Descriptions
2. Project Locations
3. Project Budgets
4. Projects' Beneficiary Information

TABLE OF CONTENTS

1. Corporation Ditch Project

- I. Introduction to the Scope of Work
- II. Project Location Exhibits with Coordinates
- III. Cost Estimate
- IV. Beneficiary Area Map

2. Harbor of Refuge Restoration Project

- I. Introduction to the Scope of Work
- II. Project Location Exhibits with Coordinates
- III. Cost Estimate
- IV. Beneficiary Area Map

Port Lavaca – Corporation Ditch Project Description

Cost Estimate - \$8,600,000

The City of Port Lavaca would like to apply for funding associated with public infrastructure and flood mitigation measures within the Corporation Drainage System. The Corporation Drainage System is a primary drainage feature for the city of Port Lavaca, Texas and throughout the years, this area has experienced street and building flooding during larger and more frequent storm events.

The City is requesting funding to mitigate flood and storm impacts through construction of a new stormwater pond facility and enhancements to the concrete and grass/overgrown ditch.

This project will be one of the main actions needed to mitigate flooding risks of low-income communities. Additionally, the design of the stormwater pond facility will enhance water quality and remove pollution from the more urbanized area before ultimately draining into the bay.

Corporation Ditch

1. INTRODUCTION

The City of Port Lavaca would like to apply for funding associated with public infrastructure and flood mitigation measures within the Corporation Drainage System. Corporation Drainage System is a primary drainage feature for the City of Port Lavaca, Texas. Throughout the years, this area of the City has experienced street and building flooding during more frequent larger storm events. This scope-of-work outlines the recommended improvements to the Corporation Drainage System to reduce the risk of flooding of roadways and properties that drain in the Corporation Drainage System.



The City is requesting funding to mitigate flood and storm impacts through construction of a new stormwater pond facility, and enhancements to the concrete and grass/overgrown ditch. The funding would be used for data collection, design, permitting, preparation of construction documents. This proposed infrastructure project is expected to help mitigate flooding in the drainage basin. The project will be one of the main actions needed to mitigate the flooding risks of low-income communities in Port Lavaca. Additionally, the design of stormwater pond facility will enhance water quality and remove pollutions from the more urbanized area before ultimately draining into the bay.



2. Existing Conditions

The Corporation Drainage System begins near Texas 35, where runoff is collected in the drainage inlets along Half League Road and piped into the concrete section of Corporation Ditch. The concrete ditch flows south between Main Street and Austin Street. South of Austin Street, Corporation Ditch is comprised of areas with grass and overgrown vegetation. The ditch drains south crossing Virginia Street and railroad tracks before ultimately discharging into Lavaca Bay. **Photo 2.1, 2.2, 2.3, and 2.4** shows the Half League Road, existing concrete ditch, grassed ditch, and the overgrown ditch. The total drainage basin for the Corporation Drainage System is approximately 645 acres (See Figure 1.1).

Corporation Ditch

Photo 2.1 Half League Road with inlets and underground storm pipes



Photo 2.2 Section of Concrete Corporation Ditch



Photo 2.3 Section of Grassed Corporation Ditch

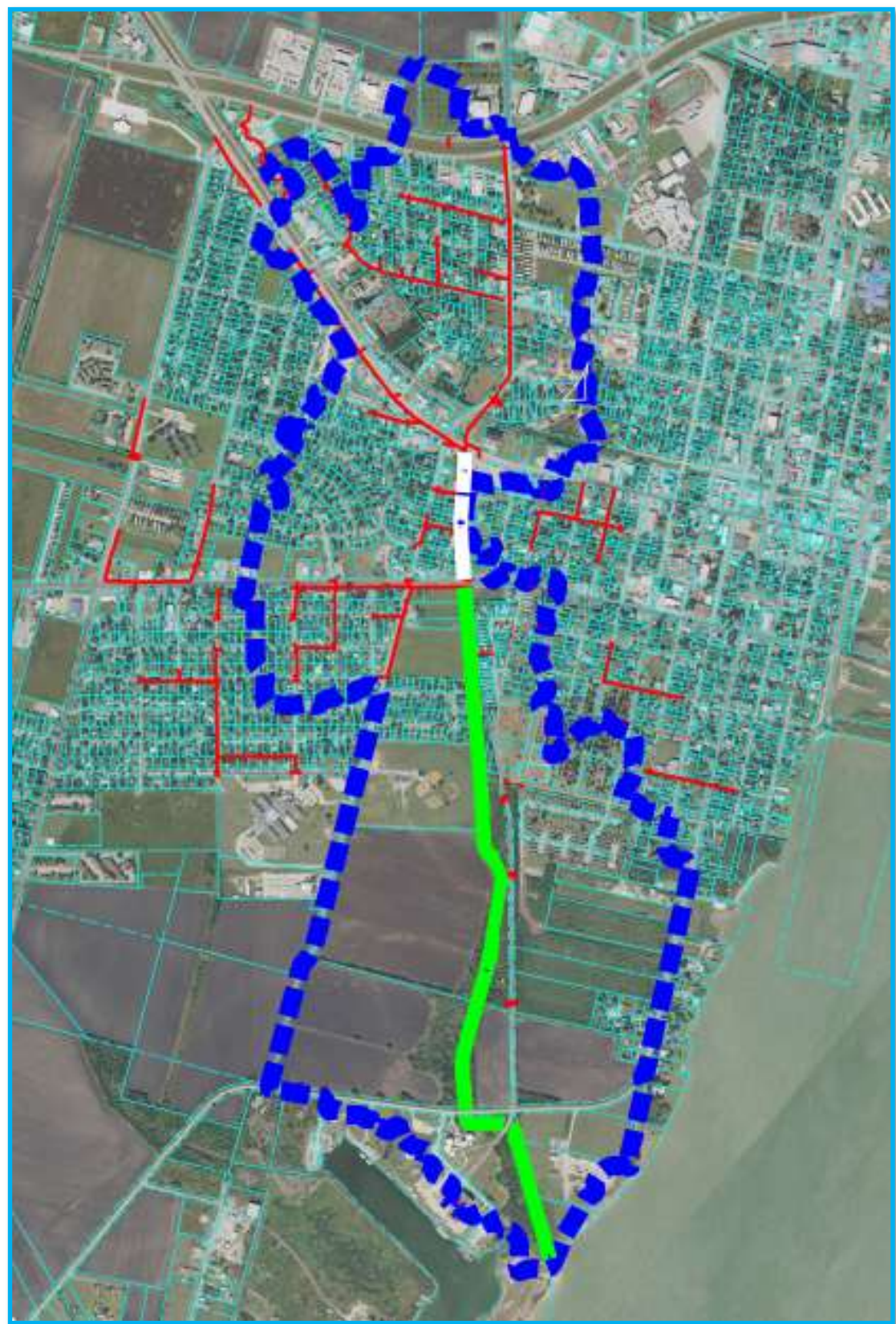
Corporation Ditch



Photo 2.4 Section of Overgrown Corporation Ditch



Corporation Ditch

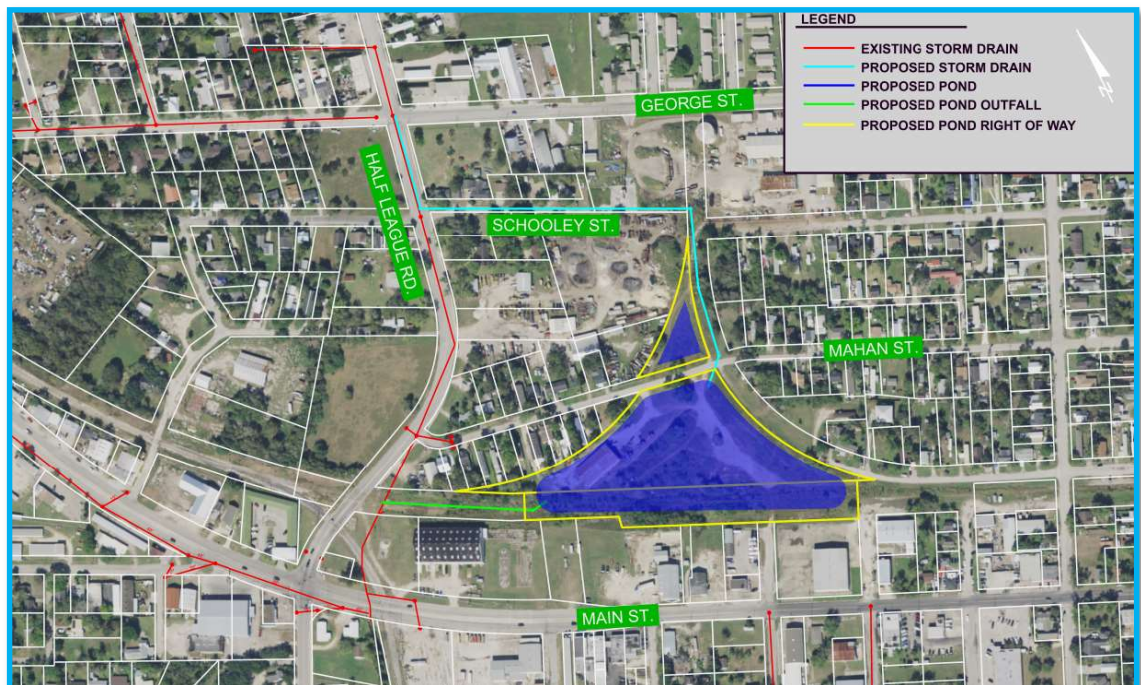


3. Proposed Improvements

The proposed improvements to the Corporation Drainage System will help reduce flooding of streets and properties. These improvements will include the following items:

1. **Construction of a new stormwater pond facility** will include some upgrades to the existing stormdrain system on half League and a new stormwater pond to treat and attenuate runoff. Currently, the proposed pond site is owned by the railroad, which is not utilized for railroad operations. The City would need to acquire the property from the railroad. Figure 3.1 depicts the proposed stormwater pond and stormdrain improvements.

Figure 3.1 Proposed Stormwater Pond and drainage improvements.



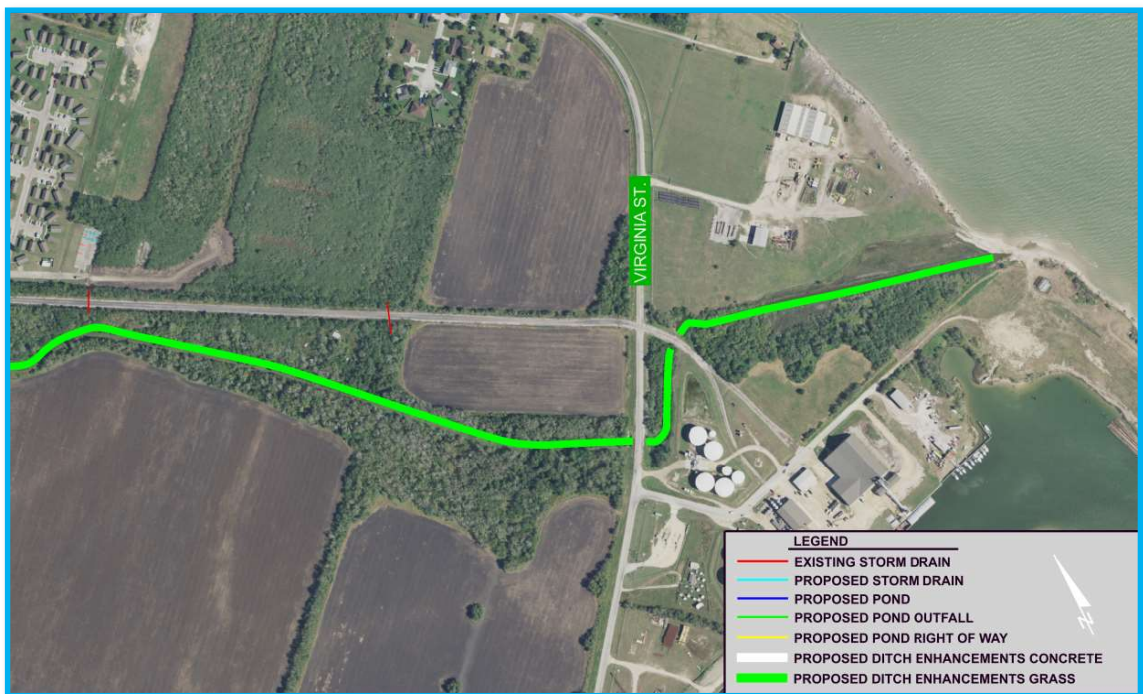
2. **Enhancement of the concrete ditch** will include replacement of the existing concrete ditch from Main Street to Austin Street. No additional right of way is proposed for these improvements.
3. **Enhancement of the grass/overgrown ditch** will include standardizing the ditch geometry, regrading of the ditch, and removal of overgrown vegetation. No additional right of way is proposed for these improvements. However, permitting may be required for land clearing or other impacts. Figure 3.2 and 3.3 depicts the location of the proposed concrete ditch enhancements.

Corporation Ditch

Figure 3.2 Proposed concrete ditch enhancements.



Figure 3.3 Proposed grass/overgrown ditch enhancements.



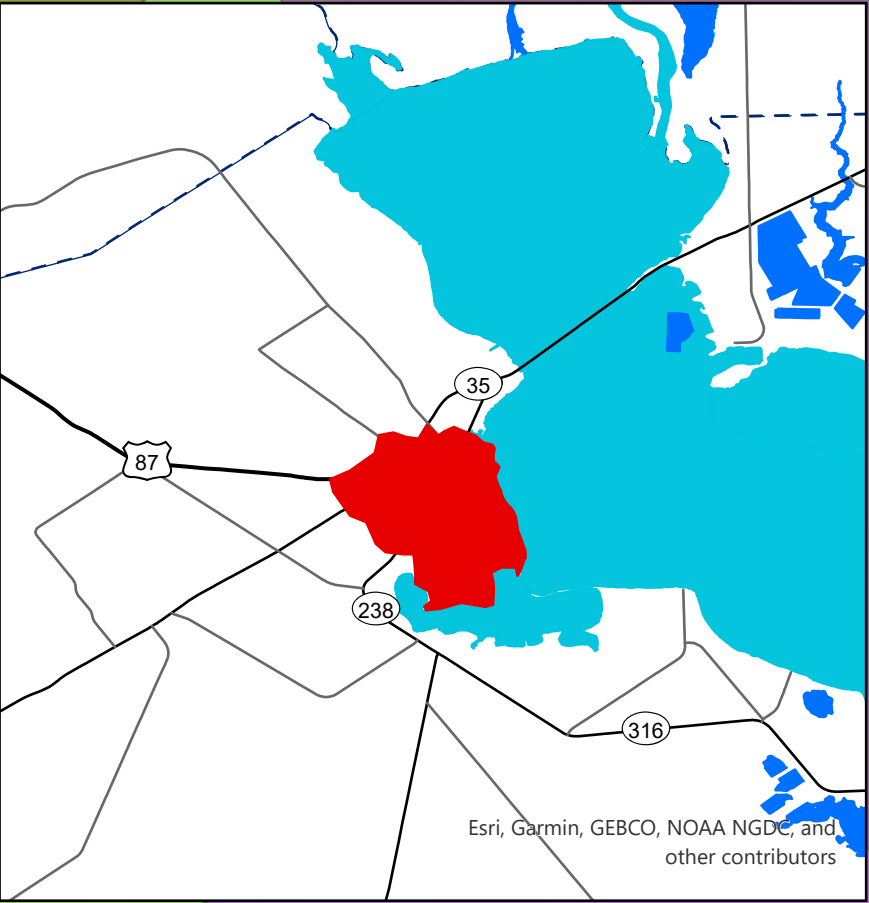
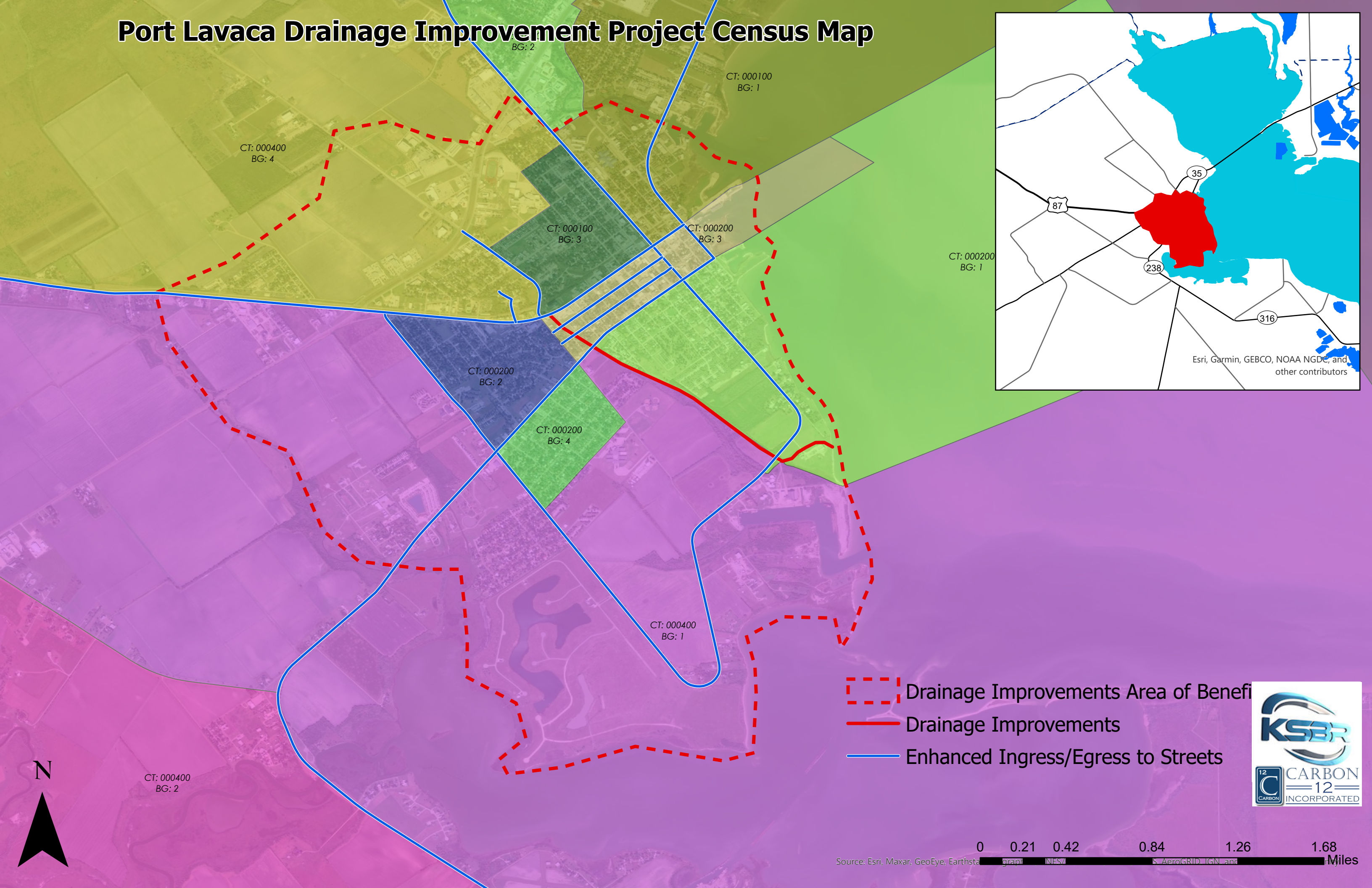
Corporation Ditch

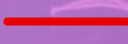

An estimated construction cost was prepared for the proposed improvements to Corporation Drainage System. The construction cost estimate was \$6,988,000.00 which includes labor/material cost and right of way cost for the pond. Table 3.1 estimated construction cost for these improvements.

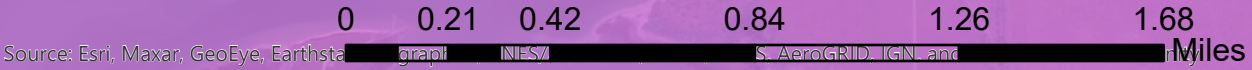
Table 3.1 Construction Cost Estimate

[illegible]

Port Lavaca Drainage Improvement Project Census Map



-  Drainage Improvements Area of Benefit
-  Drainage Improvements
-  Enhanced Ingress/Egress to Streets



Port Lavaca – Harbor of Refuge Restoration Project

Cost Estimate - \$520,000

The City of Port Lavaca would like to apply for funding associated with public infrastructure and shoreline protection measures within the Harbor of Refuge. This area has experienced erosion and is an entry point of accessibility for the entire region.

The project consists of rehabilitating the eroded shoreline along the Harbor of Refuge at the old landfill. The work will be along the west side of the entrance channel and will consist of sloping the existing bay and installing erosion control blankets/fabrics.

This project will primarily benefit low-to-moderate income households as shown by the beneficiary map below.

Harbor of Refuge

PORT LAVACA

FISHING PIER PARK

35

238

1090

Ditch

Barton

35

TILLEY
PARK

238

87

1090

238

1090

Barton

LAVACA BAY

Latitude: 28.593884
Longitude: -96.614086

PROJECT LOCATION

**CoPL HARBOR OF REFUGE
BOAT SLIP RESTORATION 2**

GENERAL LOCATION MAP



URBAN
engineering

2004 N. Commerce, Victoria, Texas 77901 · 361.578.9836
urbanvictoria.com · TREF# F-160

DATE

09/06/23

Harbor of Refuge

LAVACA BAY

LOOP 1090

HARBOR OF REFUGE

RESTORATION AREA

CHOCOLATE BAY



GRAPHIC SCALE IN FEET

0 250 500

CoPL HARBOR OF REFUGE BOAT SLIP RESTORATION 2

RESTORATION EXHIBIT

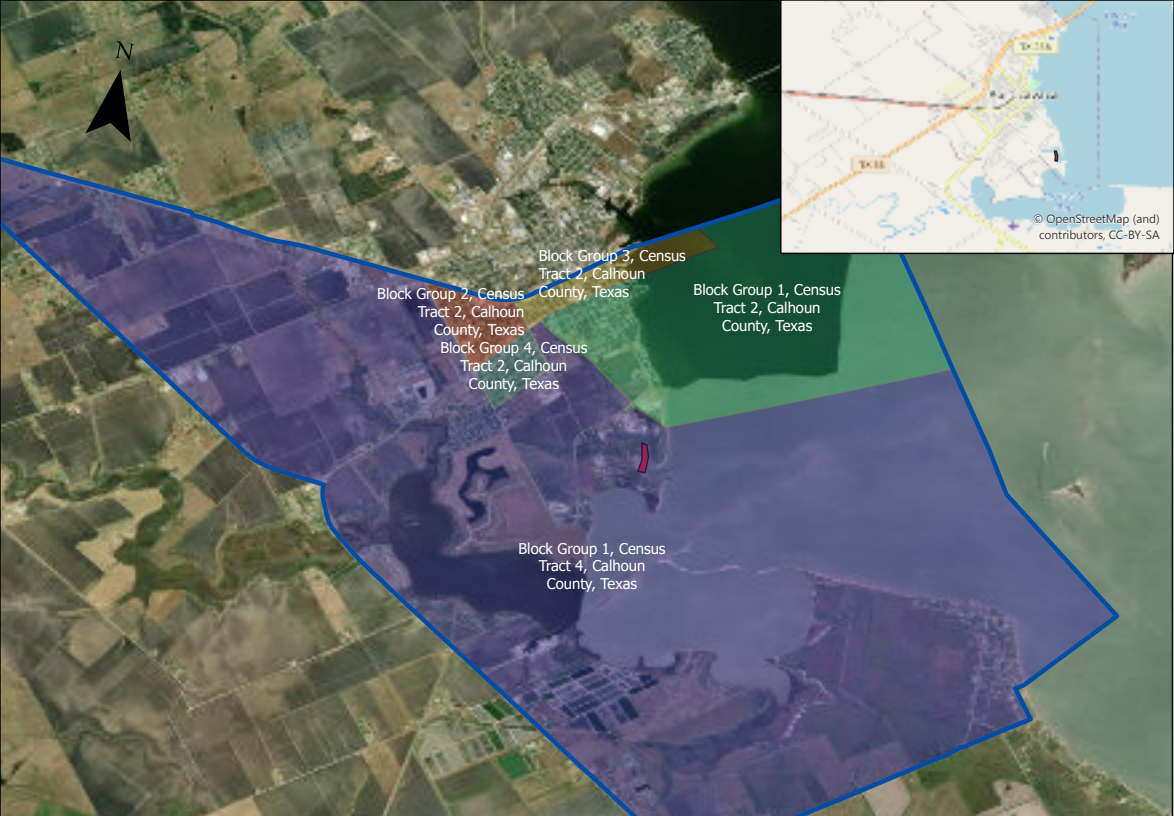


URBAN
engineering

2004 N. Commerce, Victoria, Texas 77901 · 361.578.9836
urbanvictoria.com · TREF# F-160

Harbor of Refuge

ENGINEER'S OPINION OF PROBABLE COSTS					
Harbor of Refuge Restoration CDBG-MIT					
CITY OF PORT LAVACA					
PREPARED BY: URBAN ENGINEERING					
9/6/2023					
ITEM NO.	DESCRIPTION	ESTIMATED QUANTITY	UNIT	UNIT PRICE	TOTAL PRICE
1.	Mobilization, Insurance and Bonds	1	LS	\$ 50,000.00	\$ 50,000.00
2.	Silt Fence	1,000	LF	\$ 10.00	\$ 10,000.00
3.	Bluff Excavation	4,800	CY	\$ 18.00	\$ 86,400.00
4.	Site Grading	1	LS	\$ 31,500.00	\$ 31,500.00
5.	Place Clay Cap (18") (Classification Sand Clayey (SC) or Low Plasticity Clayey (CL))	4,450	CY	\$ 17.00	\$ 75,650.00
6.	Place Seed & Topsoil (6")	1,500	CY	\$ 36.00	\$ 54,000.00
7.	Furnish & Install Erosion Control Blanket (Bionet S75BN Erosion Control Blanket as manufactured by Bionet or approved equal)	4,700	SY	\$ 13.50	\$ 63,450.00
TOTAL CONSTRUCTION COST					\$ 371,000.00
8.	Engineering	1	LS	\$ 35,650.00	\$ 35,650.00
9.	Grant Administration	1	LS	\$ 19,000.00	\$ 19,000.00
TOTAL PROJECT COST					\$ 425,650.00



© OpenStreetMap (and) contributors, CC-BY-SA

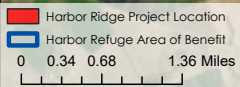
Block Group 3, Census Tract 2, Calhoun County, Texas

Block Group 2, Census Tract 2, Calhoun County, Texas

Block Group 4, Census Tract 2, Calhoun County, Texas

Block Group 1, Census Tract 2, Calhoun County, Texas

Block Group 1, Census Tract 4, Calhoun County, Texas



Harbor of Refuge Area of Benefit Map

