

Alamo Heights Ph 1 & 2

Jackson (5th -Alcoa)

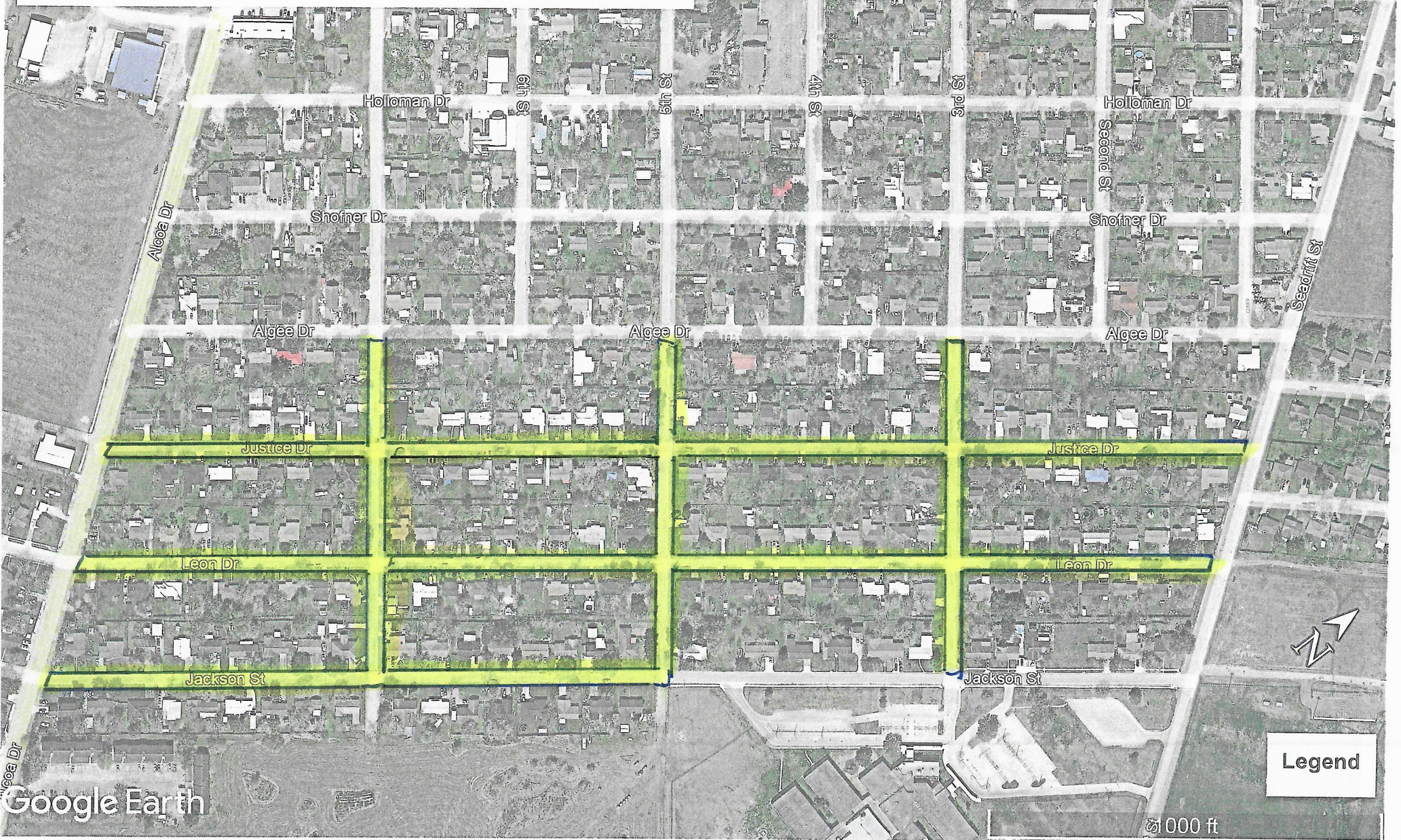
Leon and Justice (Seadrift-Alcoa)

3rd, 5th and 7th Street (Jackson - Algee)

New underground storm drainage system to

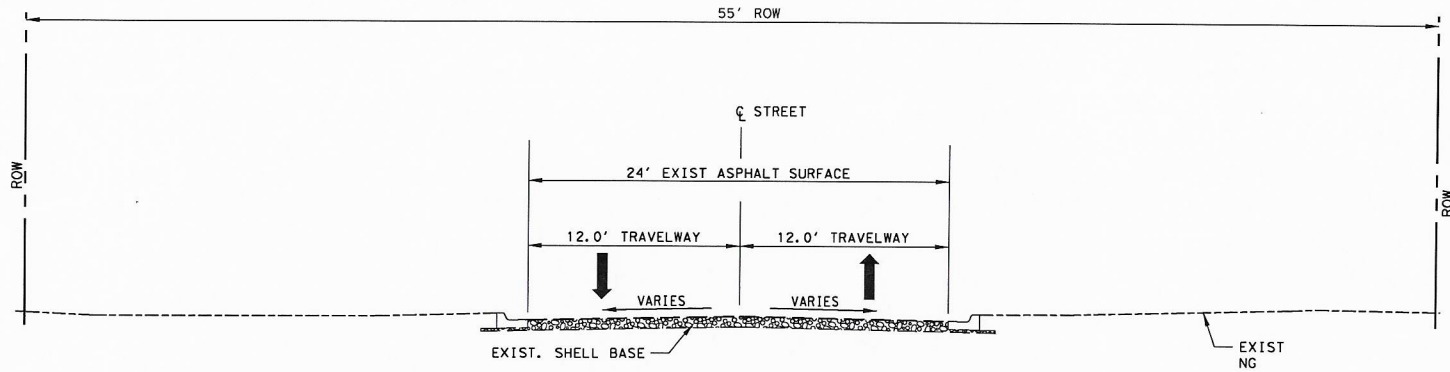
drain to 5th & Jackson Street drainage pipes;

streets reconstruction with curb & gutter, inlets, and sidewalk on one side

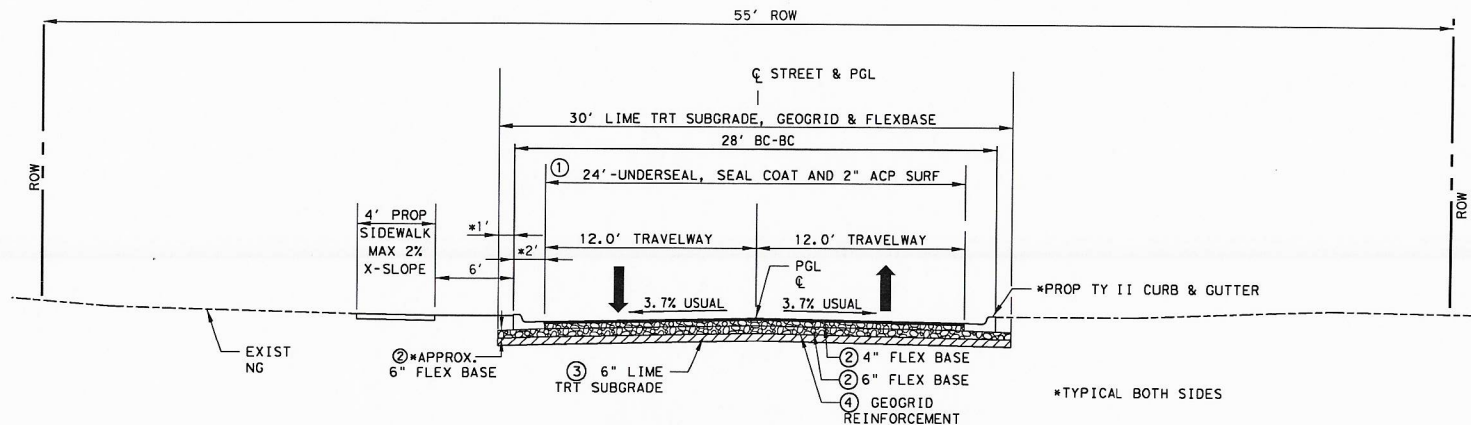


4/22/2022 4:52:43 PM

L:\CIVIL\PORT LAVACA\ACTIVE\PORT LAVACA\113183-JACKSON ST Engineering Drawing\DRW\Roadway\JACKSON STS-1.dgn



EXISTING TYPICAL SECTION
PHASE 1 AND 2 STREETS



PROPOSED TYPICAL SECTION
PHASE 1 AND 2 STREETS

NOTES

- ① UNDERSEAL, SEAL COAT & 2" ACP SURFACE COURSE PER TXDOT SPEC ITEMS 316 AND ITEM 340 OF THE SPECIFICATIONS.
- ② BASE-10" FLEXIBLE BASE PER TXDOT SPEC ITEM 247, TYPE A GRADE 2.
- ③ SUBGRADE-6" LIME TREATED SUBGRADE PER TXDOT SPEC 260 OF THE SPECIFICATIONS. BASED ON 5% BY UNIT WEIGHT OF 110#/CF.
- ④ INSTALL GEOGRID PER MANUFACTURER'S RECOMMENDATIONS. GEOGRID OVERLAP TO BE AS PER MANUFACTURER'S RECOMMENDATIONS, WITH A MINIMUM OF 1'. PINS OR STAPLES SHALL BE USED TO HOLD THE GEOGRID IN PLACE PRIOR TO FILL PLACEMENT.

CITY OF PORT LAVACA	
DEPARTMENT OF PUBLIC WORKS AND ENGINEERING	
BOND PROJECT	
ALAMO HEIGHTS	
TYPICAL ROADWAY SECTIONS PHASE 1 AND 2 STREETS	
CivilCorp ENGINEERS • SURVEYORS	
PROJECT NO.	SHEET NO.
REVISIONS	
NO.	