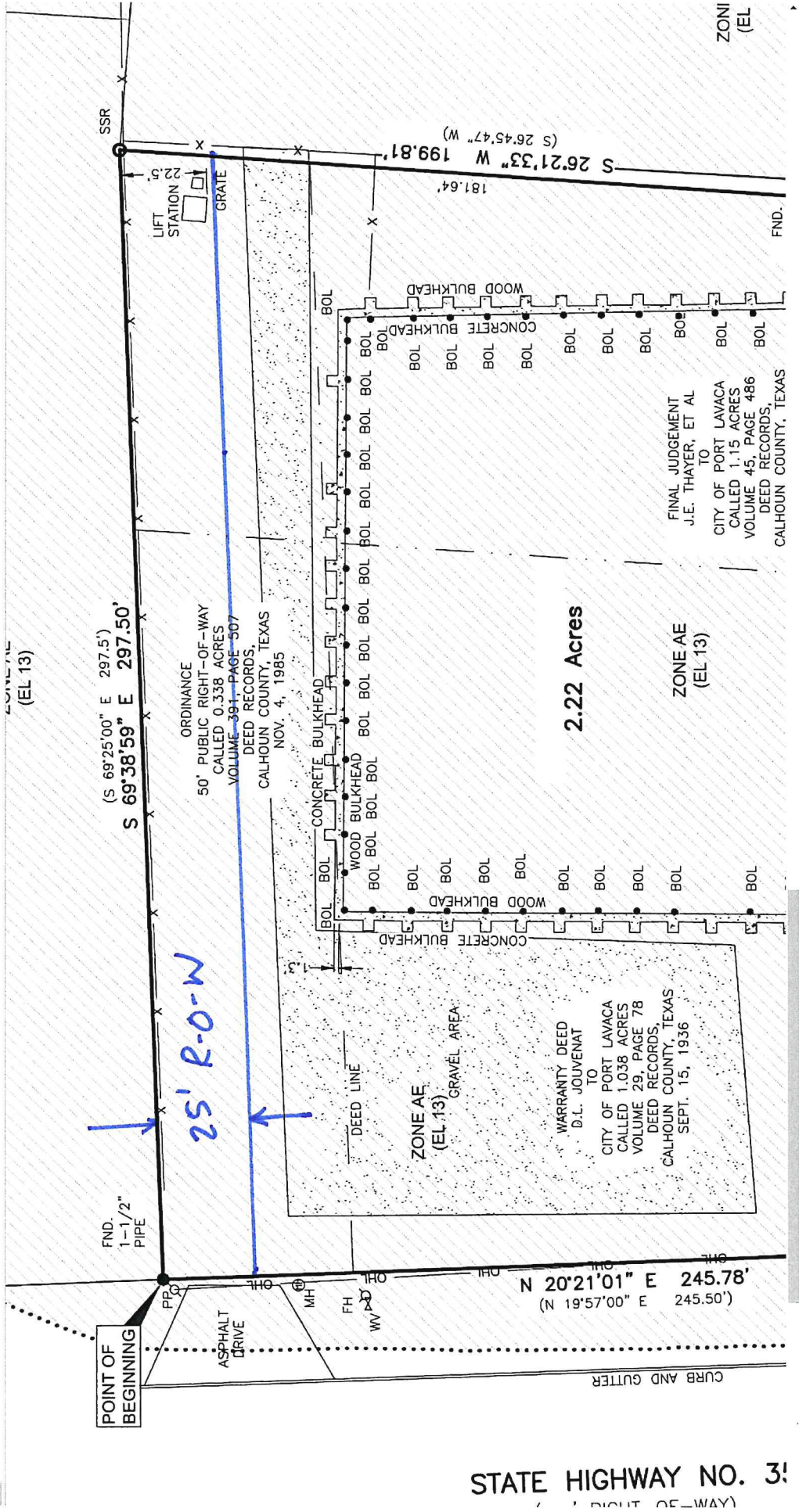


Agenda # 11



ZONI (EL

FINAL JUDGEMENT
J.E. THAYER, ET AL
TO
CITY OF PORT LAVACA
CALLED 1.15 ACRES
VOLUME 45, PAGE 486
DEED RECORDS,
CALHOUN COUNTY, TEXAS

2.22 Acres

ZONE AE
(EL 13)

ZONE AE
(EL 13)

STATE HIGHWAY NO. 3!