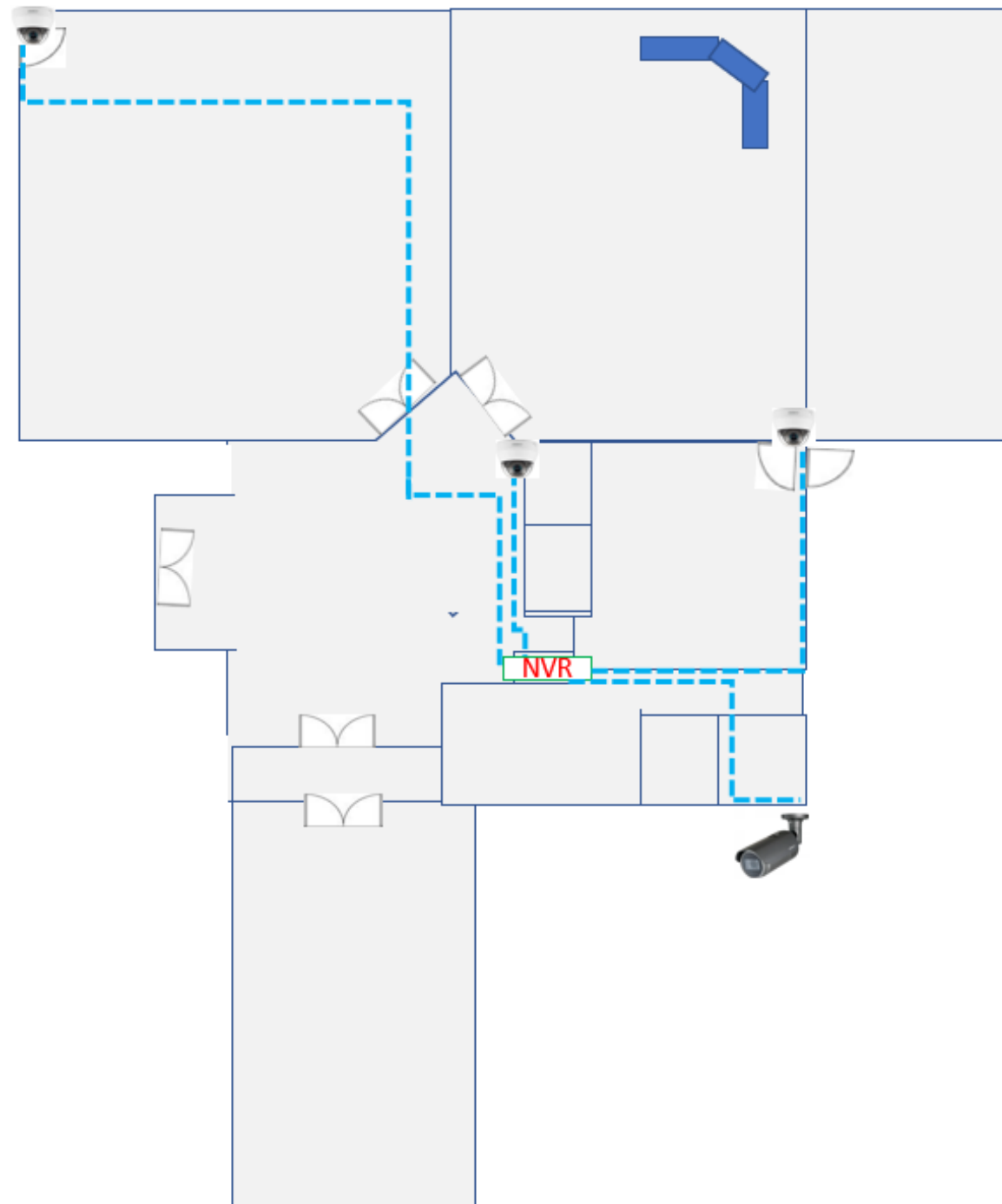







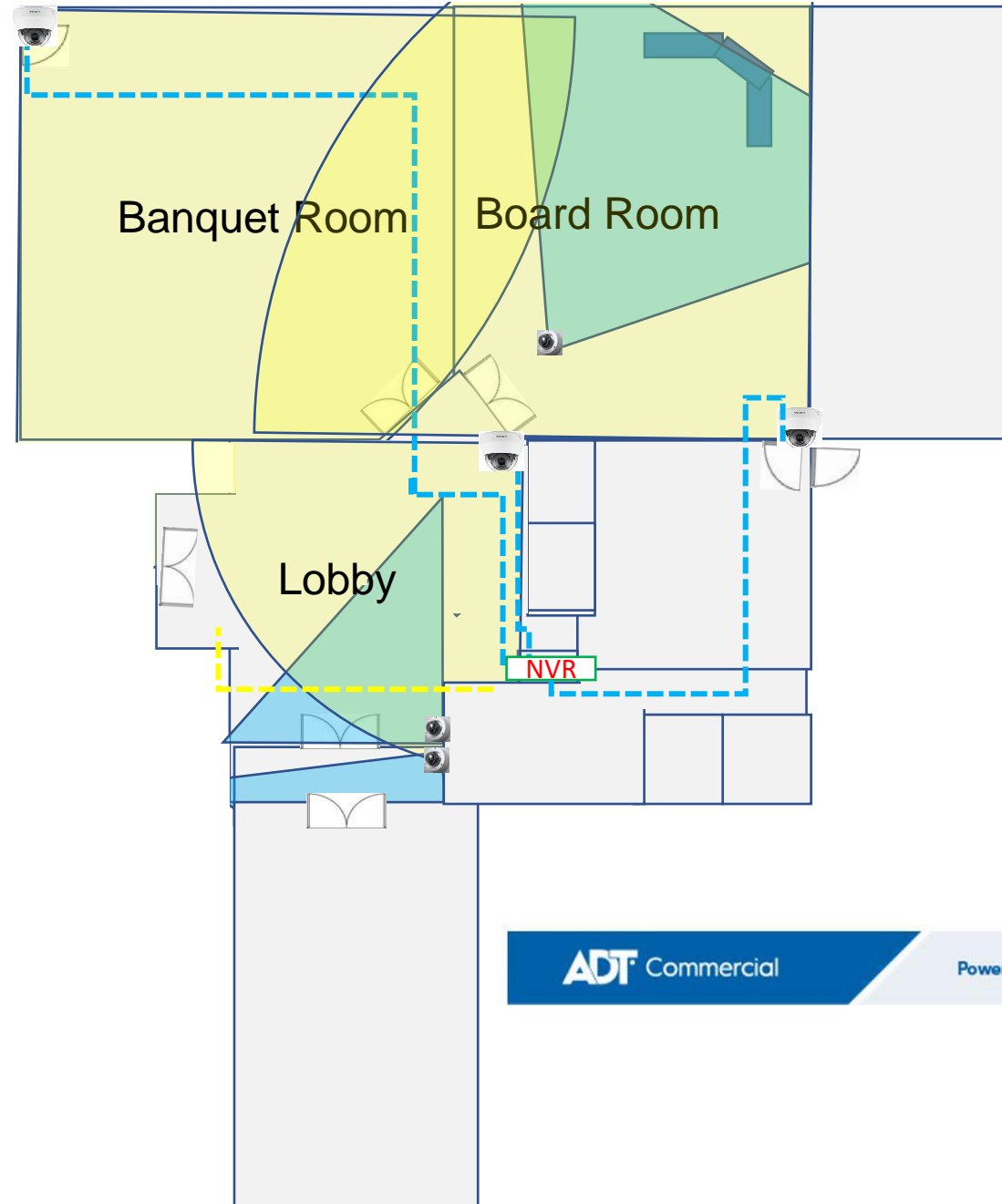
Update Cameras and Replace NVR with 16 Channel



INDOOR CAMERAS

Add on Camera to view entrance of Board Room, lobby area and Banquet Room

-  Yellow represents "New" Camera
-  Blue represents "Existing" indoor Camera view
-  Light Blue represents "Existing" indoor Camera view



ADT Commercial

Powered by Experience. Driven by Excellence.™



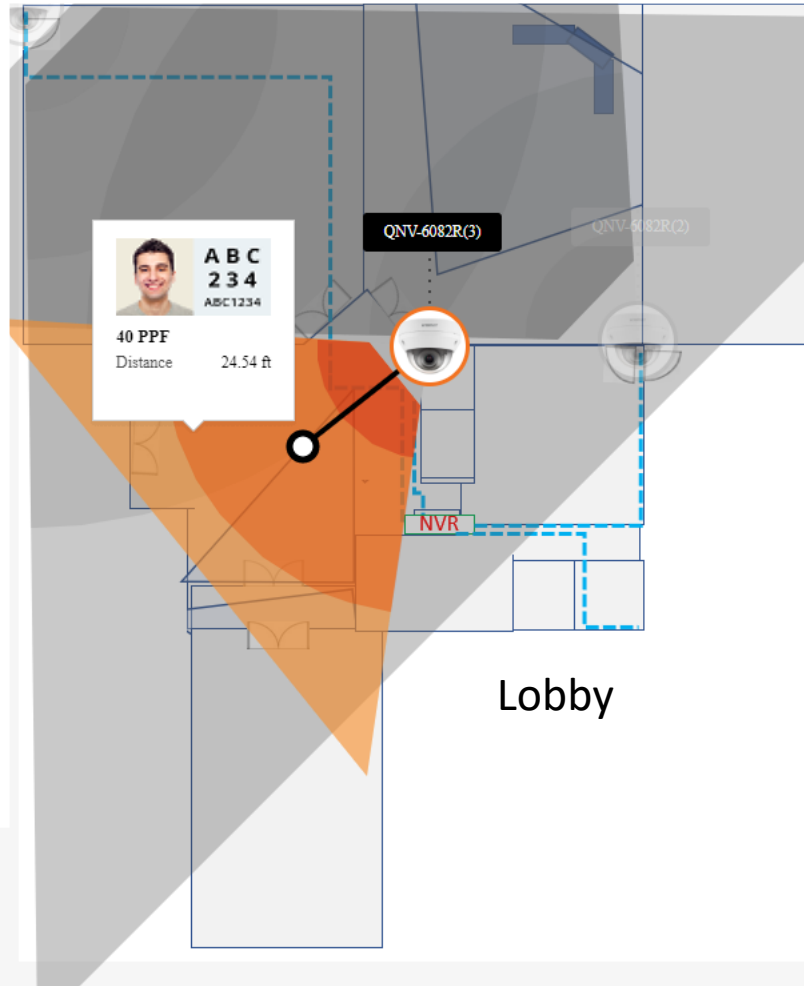
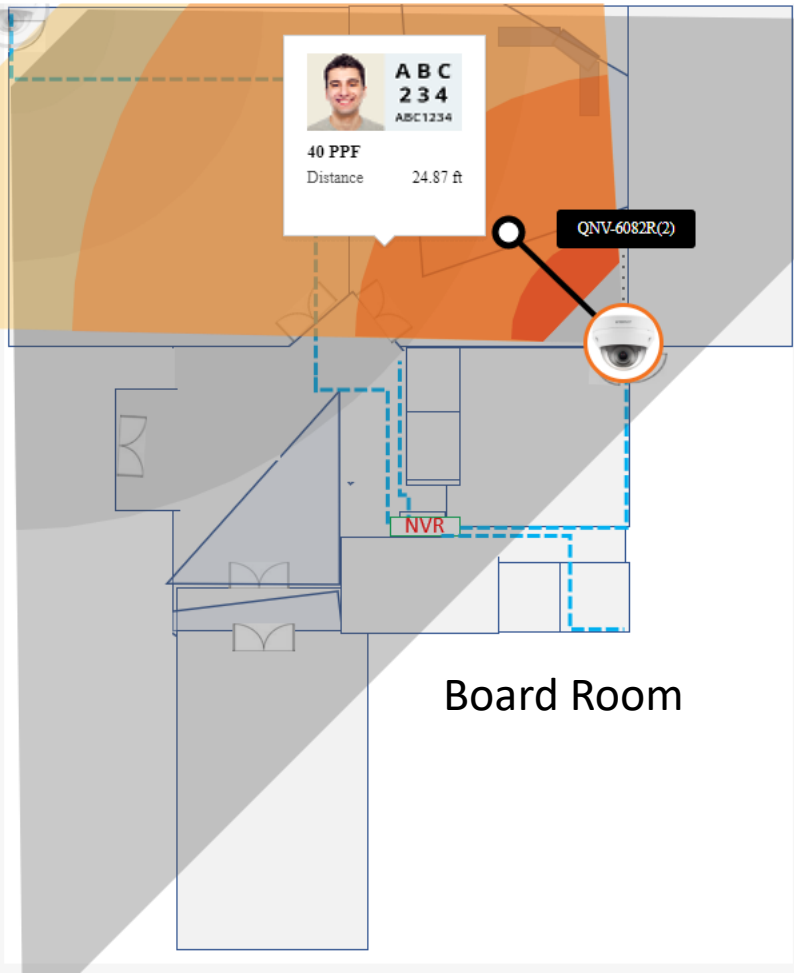
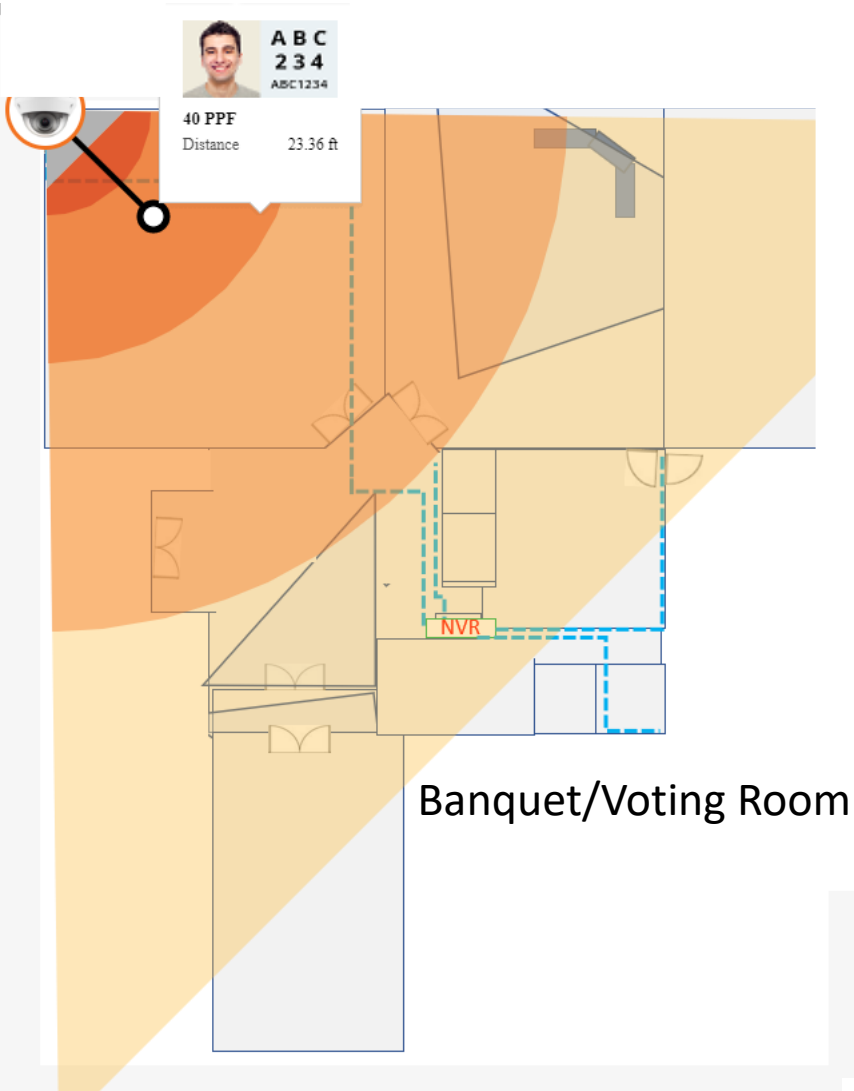
INDOOR CAMERAS

Motorized Lens with Microphones.

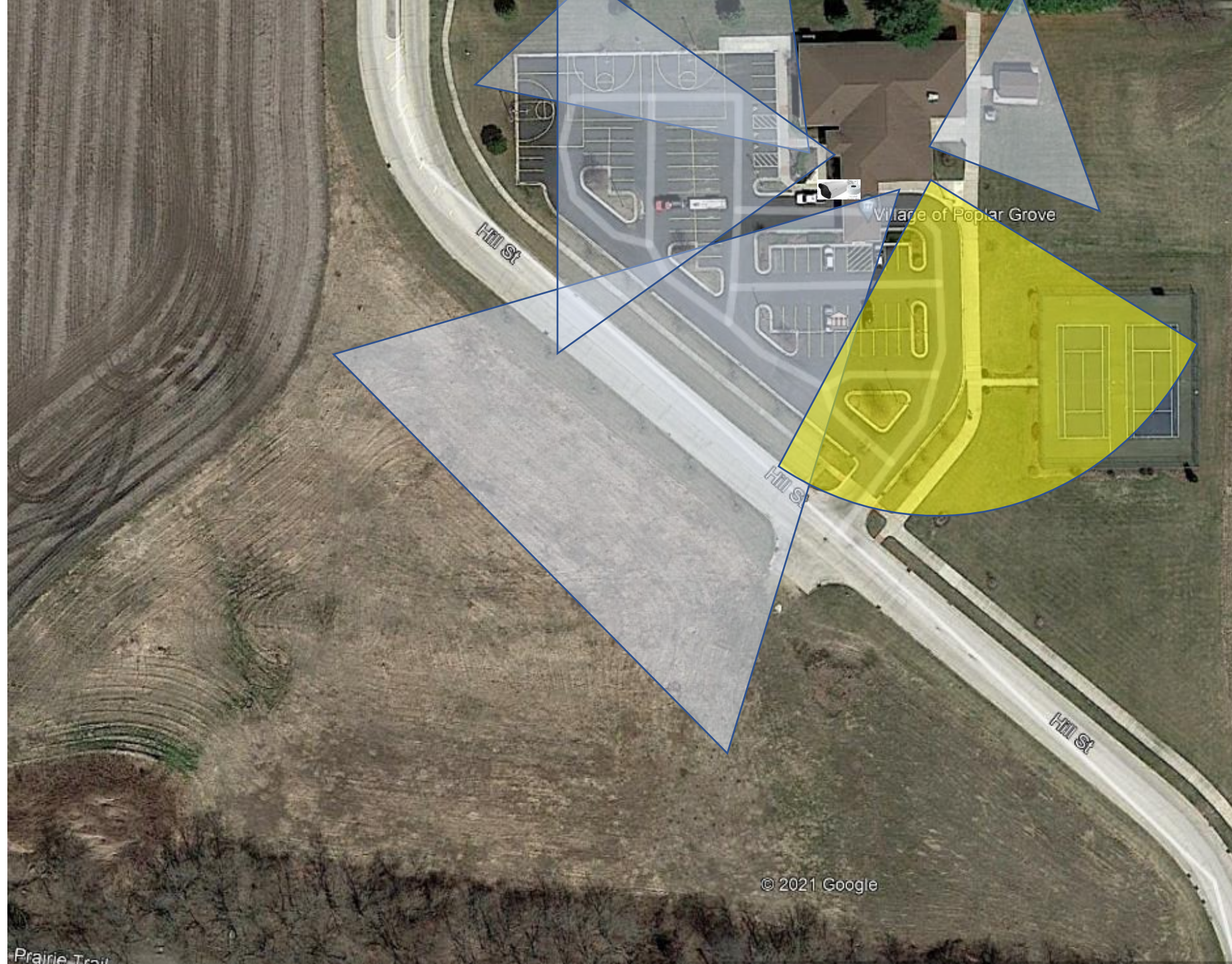


- QND-6082R**
2 MP Network IR Dome Camera with Motorized Varifocal Lens
- 2 Megapixel (1920 x 1080) resolution
 - 2.2 - 10mm (2.1x) motorized varifocal lens
 - 30fps@full resolutions (H.265/H.264)
 - H.265, H.264, MJPEG codec supported, Multiple streaming
 - Day & Night (ICR), WDR (120dB)
 - Defocus detection, Directional detection, Motion detection, Enter/Exit, Tampering, Virtual line
 - micro SD (128GB) memory slot, PoE / 12V DC
 - IR viewable length 20m
 - Halfway view support
 - Analog video out & simple focus for easy installation
 - IDC support (Lens Distortion Correction)
 - Built-in microphone
 - Genetec Ssrcast compatible

2mp Camera to save bandwidth and storage



**Add On
QNO-8080R
Bullet Camera
to View
Parking and
Tennis Courts**





QNO-8080R

5 MP Network IR Bullet Camera with Motorized Varifocal Lens

- 5 Megapixel resolution
- 3.2~10mm (3.1x) motorized varifocal lens
- 30fps@all resolutions (H.265/H.264)
- H.265, H.264, MJPEG codec supported, Multiple streaming
- Day & Night (ICR), WDR (120dB)
- Defocus detection, Directional detection, Motion detection, Enter/Exit, Tampering, Virtual line
- micro SD (128GB) memory slot, PoE
- IR viewable length 25m, IP66, IK10
- Hallway view support
- Analog video out & simple focus for easy installation
- LDC support (Lens Distortion Correction)



Model
Total

Name

Quantity
16

Scene

Channel
16

Bandwidth
46.54 Mb/s

Storage
9.25 TB

Sub stream

Days
32

XRN-1620SB1

16CH 4K 140Mbps H.265 PoE+ NVR



- Up to 16 channels, Supports up to 32 megapixel camera resolution
- 140Mbps network camera recording
- Support 4K video out on HDMI monitor
- Support dual monitor HDMI/VGA video out
- H.265, H.264, MJPEG compression
- WiseStream support
- Maximum 4 internal HDDs (24TB)

QNO-8080R

5 MP Network IR Bullet Camera with Motorized Varifocal Lens

- 5 Megapixel resolution
- 3.2~10mm (3.1x) motorized varifocal lens
- 30fps@all resolutions (H.265/H.264)
- H.265, H.264, MJPEG codec supported, Multiple streaming
- Day & Night (ICR), WDR (120dB)
- Defocus detection, Directional detection, Motion detection, Enter/Exit, Tampering, Virtual line
- micro SD (128GB) memory slot, PoE
- IR viewable length 25m, IP66, IK10
- Hallway view support
- Analog video out & simple focus for easy installation
- LDC support (Lens Distortion Correction)



QND-6082R

2 MP Network IR Dome Camera with Motorized

- 2 Megapixel (1920 x 1080) resolution
- 3.2 ~ 10mm (3.1x) motorized varifocal len:
- 30fps@all resolutions (H.265/H.264)
- H.265, H.264, MJPEG codec supported, M.
- Day & Night (ICR), WDR (120dB)
- Defocus detection, Directional detection, Motion detection, Enter/Exit, Tampering, Virtual line
- micro SD (128GB) memory slot, PoE / 12V DC
- IR viewable length 20m
- Hallway view support
- Analog video out & simple focus for easy installation
- LDC support (Lens Distortion Correction)
- Built-in microphone
- Genetec Stratocast compatible



https://www.youtube.com/watch?v=l0X2d4fW_PA
NOTE: You Tube Video is of the 3mp, the 8080 will be even clearer and crisper.

<https://www.youtube.com/watch?v=Ojl1AUem1a0>

Poplar Grove
CCTV Layout

MAP FROM 2019 INSTALL

