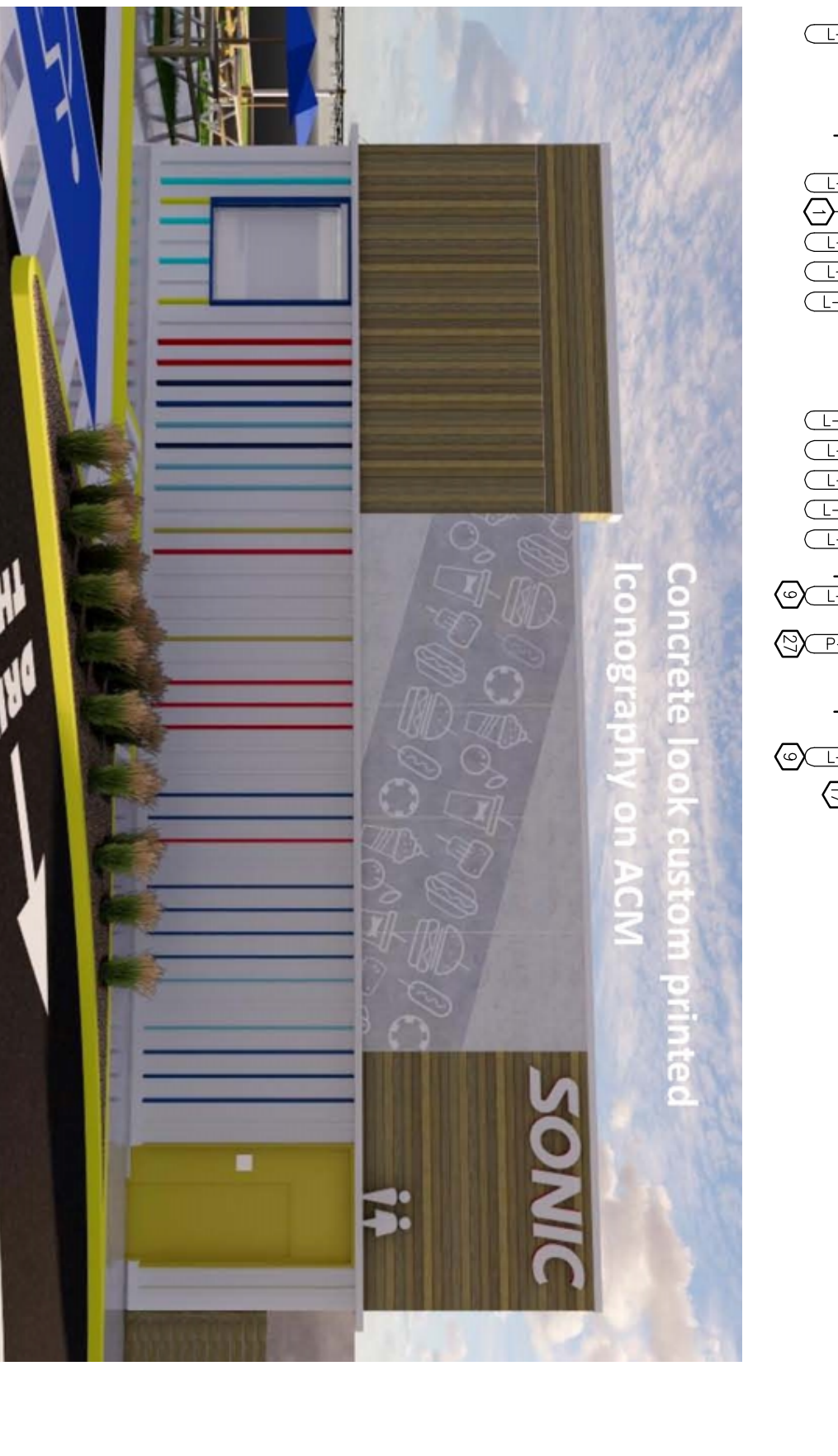
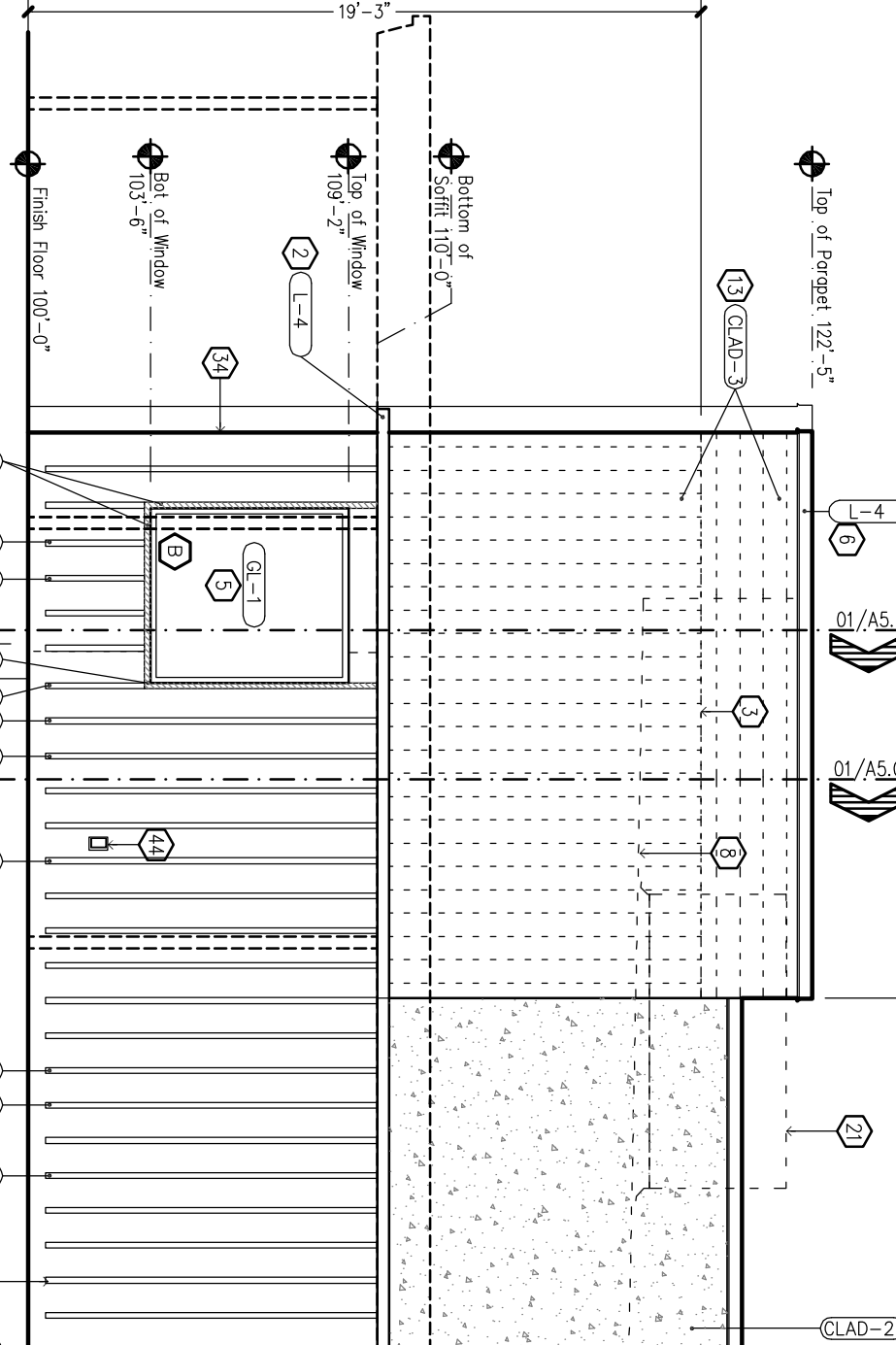
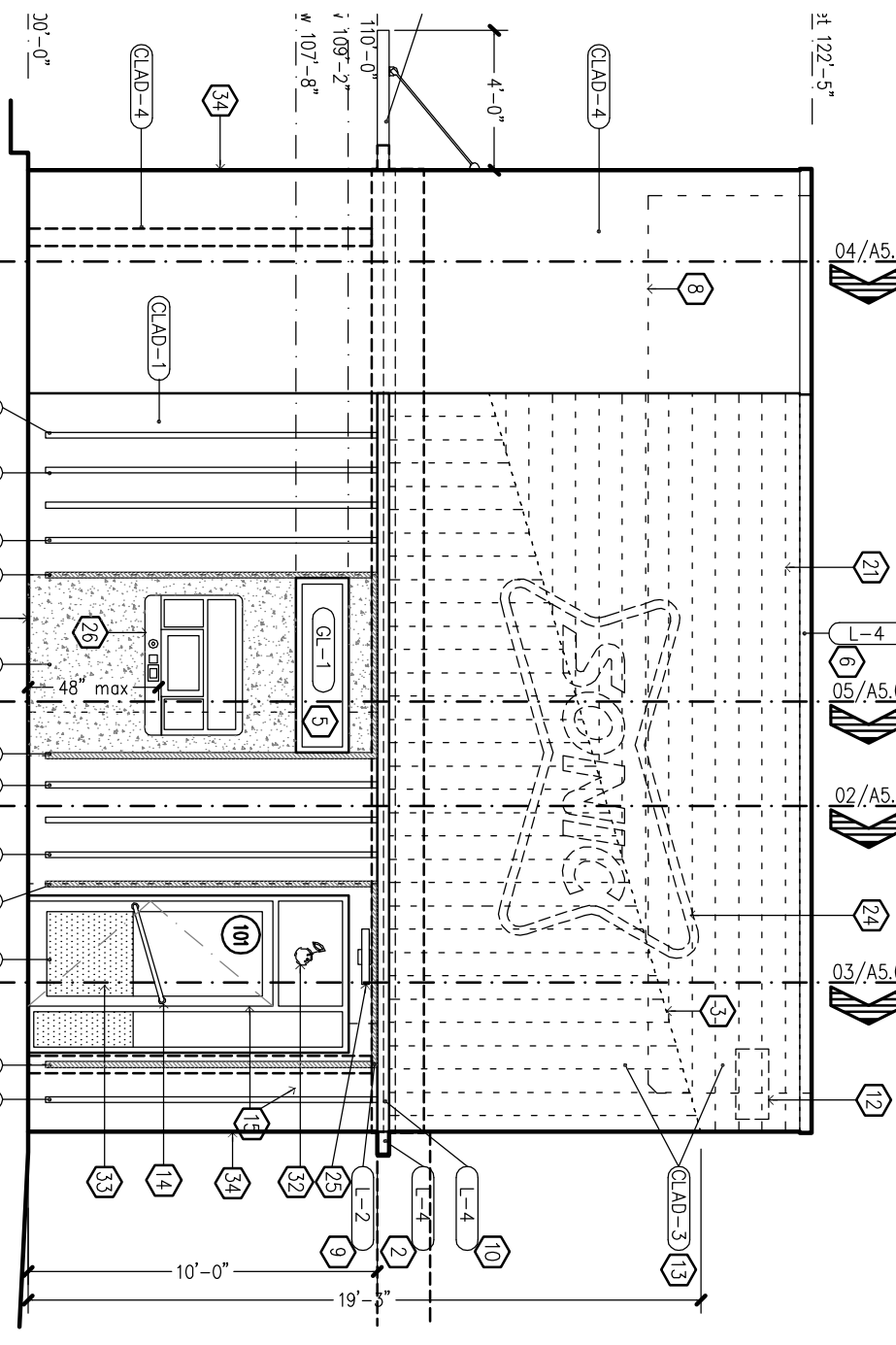
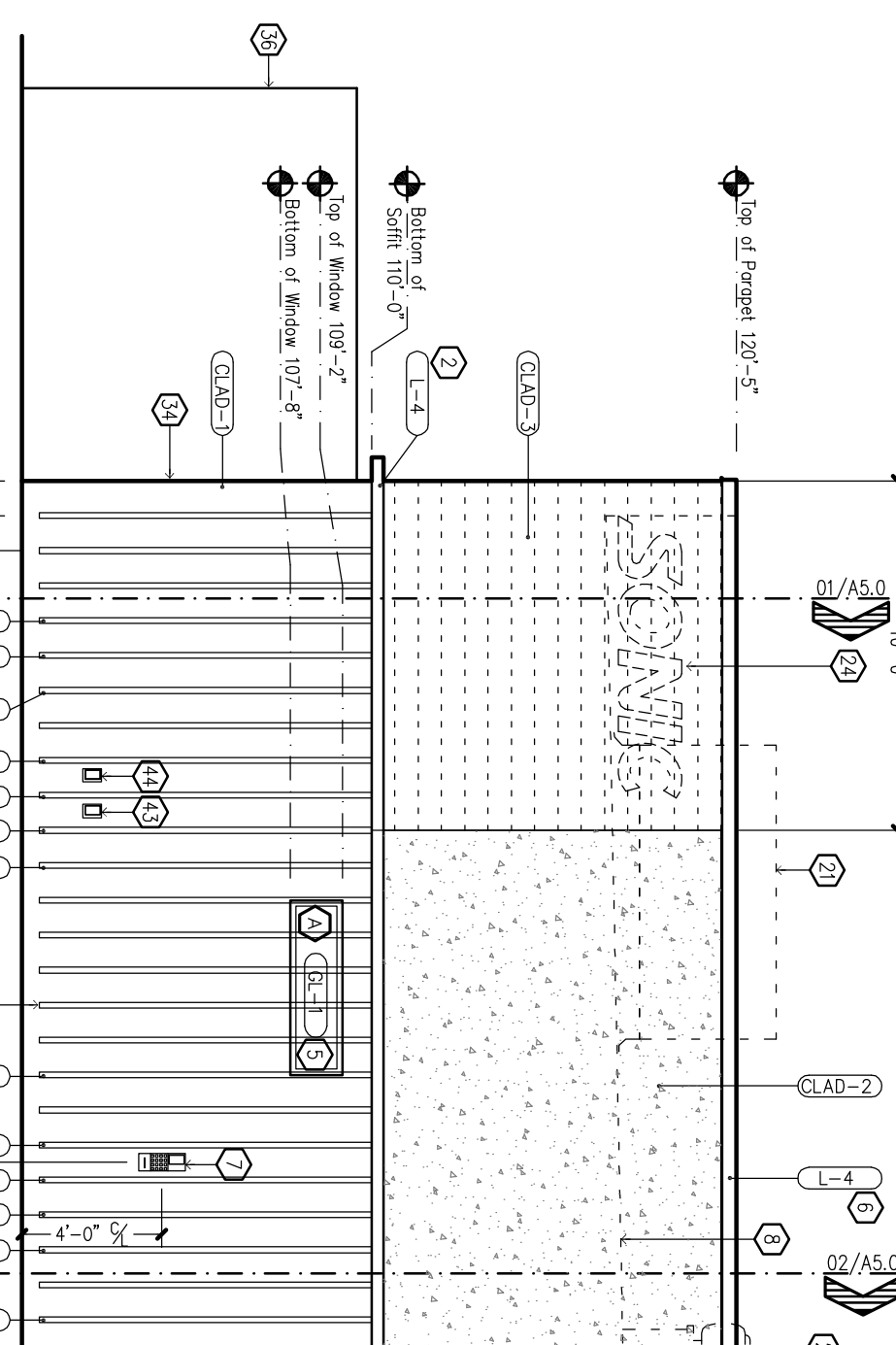
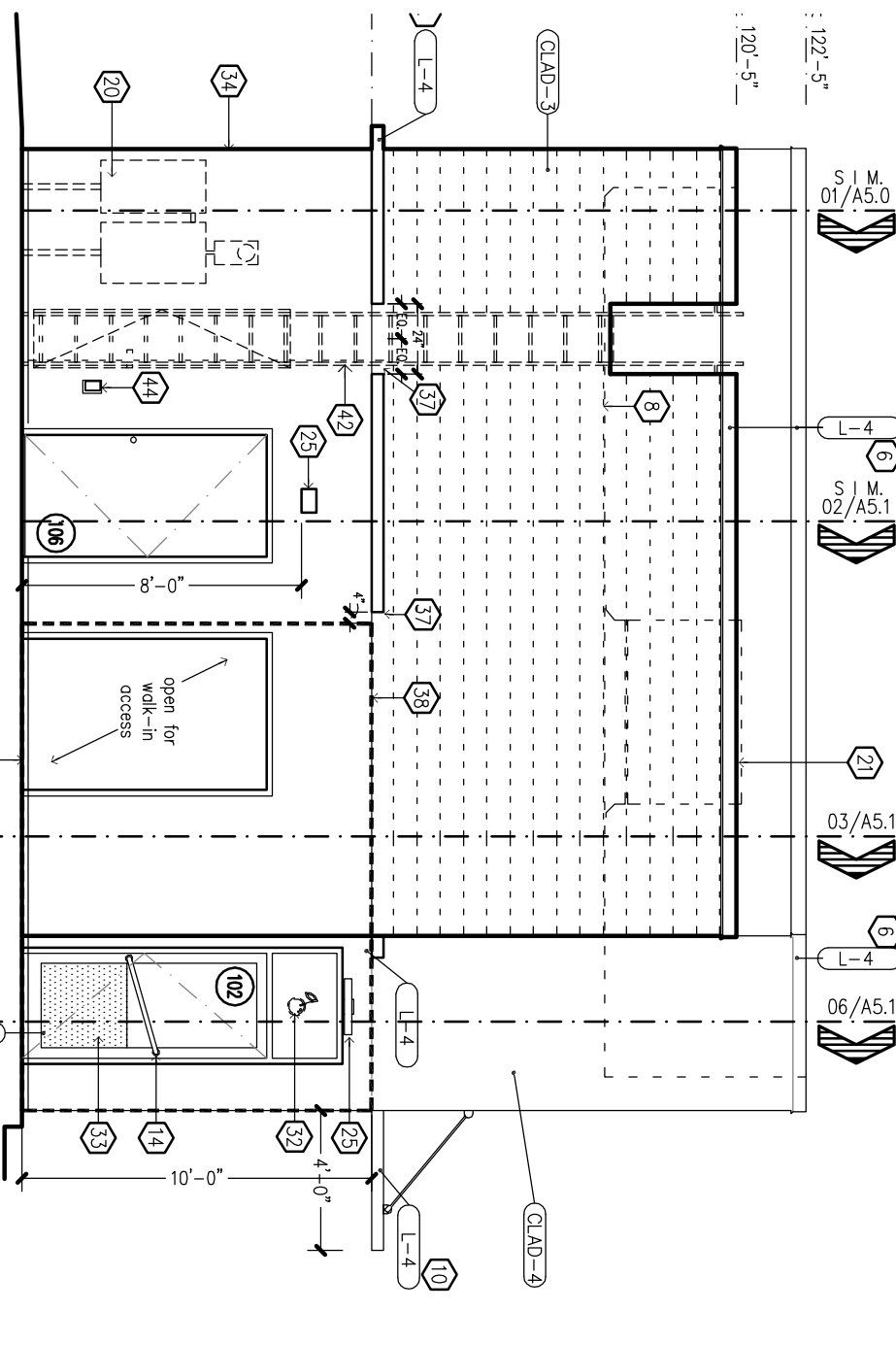
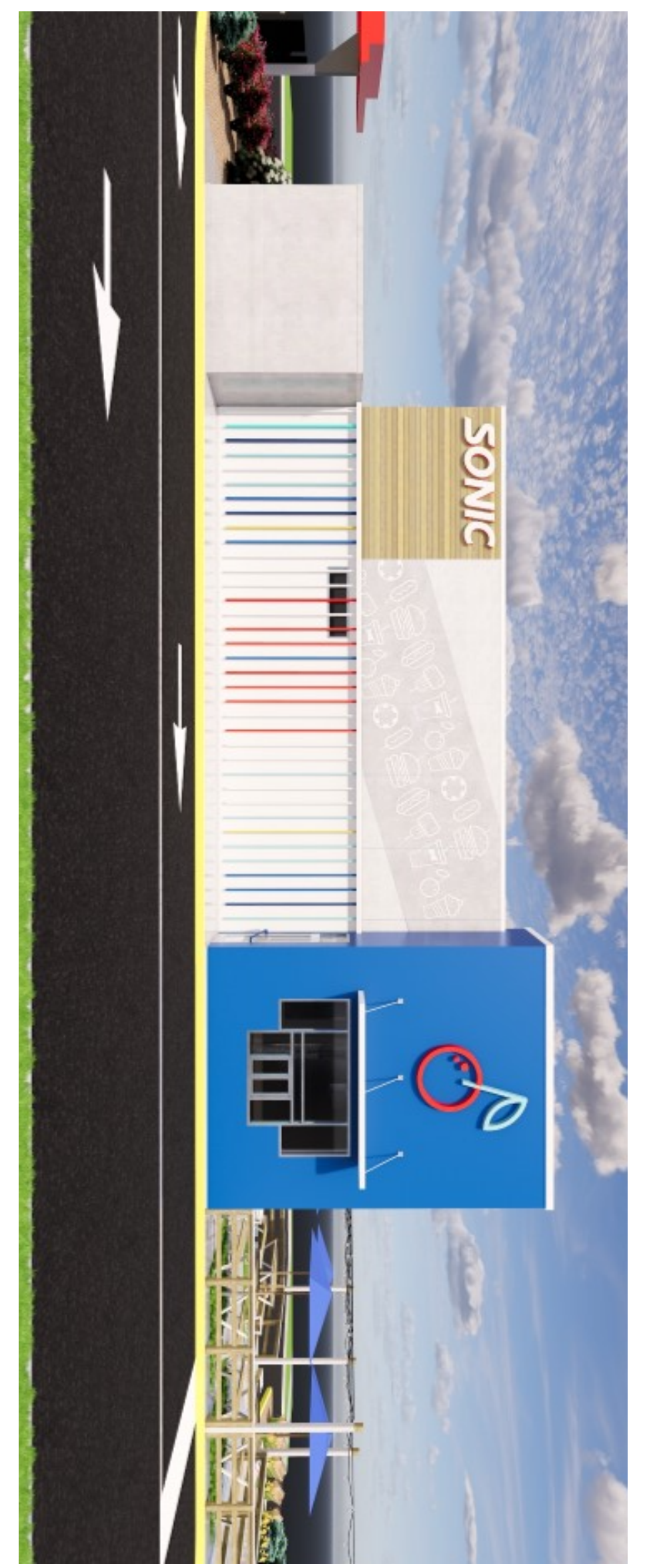


### NOTES BY SYMBOL

|    |   |    |                           |
|----|---|----|---------------------------|
| 1  | NOT USED  | 23 | FASTENING ANCHOR BOLT     |
| 2  | PRE-FABRICATED ALUMINUM EXTERIOR /  | 24 | SONIC DRIVE-IN BRAND SIGN |
| 3  | OVERLAP SCOPES  | 25 | SONIC DRIVE-IN BRAND SIGN |
| 4  | ALUMINUM STAY-IN-THE-RAIN WINDOW FRAMES   | 26 | SONIC DRIVE-IN BRAND SIGN |
| 5  | SPY GLASSING  | 27 | SONIC DRIVE-IN BRAND SIGN |
| 6  | ADDITIONAL PV STATION - REFER TO ELECTRICAL FOR ADDITIONAL INFORMATION (KEY) REFERRED TO SHEET FOR ADDITIONAL INFORMATION | 28 | SONIC DRIVE-IN BRAND SIGN |
| 7  | DISBURD LINES INDICATE ROOF MOUNTED EQUIPMENT - REFER TO ELECTRICAL   | 29 | SONIC DRIVE-IN BRAND SIGN |
| 8  | 2" X 4" POWER COATED ALUMINUM SHIMBOL   | 30 | SONIC DRIVE-IN BRAND SIGN |
| 9  | 2" X 4" POWER COATED ALUMINUM SHIMBOL   | 31 | SONIC DRIVE-IN BRAND SIGN |
| 10 | 2" X 4" POWER COATED ALUMINUM SHIMBOL   | 32 | SONIC DRIVE-IN BRAND SIGN |
| 11 | 2" X 4" POWER COATED ALUMINUM SHIMBOL   | 33 | SONIC DRIVE-IN BRAND SIGN |
| 12 | 2" X 4" POWER COATED ALUMINUM SHIMBOL   | 34 | SONIC DRIVE-IN BRAND SIGN |
| 13 | 2" X 4" POWER COATED ALUMINUM SHIMBOL   | 35 | SONIC DRIVE-IN BRAND SIGN |
| 14 | 2" X 4" POWER COATED ALUMINUM SHIMBOL   | 36 | SONIC DRIVE-IN BRAND SIGN |
| 15 | 2" X 4" POWER COATED ALUMINUM SHIMBOL   | 37 | SONIC DRIVE-IN BRAND SIGN |
| 16 | 2" X 4" POWER COATED ALUMINUM SHIMBOL   | 38 | SONIC DRIVE-IN BRAND SIGN |
| 17 | 2" X 4" POWER COATED ALUMINUM SHIMBOL   | 39 | SONIC DRIVE-IN BRAND SIGN |
| 18 | 2" X 4" POWER COATED ALUMINUM SHIMBOL   | 40 | SONIC DRIVE-IN BRAND SIGN |
| 19 | 2" X 4" POWER COATED ALUMINUM SHIMBOL   | 41 | SONIC DRIVE-IN BRAND SIGN |
| 20 | 2" X 4" POWER COATED ALUMINUM SHIMBOL   | 42 | SONIC DRIVE-IN BRAND SIGN |
| 21 | 2" X 4" POWER COATED ALUMINUM SHIMBOL   | 43 | SONIC DRIVE-IN BRAND SIGN |
| 22 | 2" X 4" POWER COATED ALUMINUM SHIMBOL   | 44 | SONIC DRIVE-IN BRAND SIGN |

### EXTERIOR FINISH SCHEDULE

|    |                           |    |                           |
|----|---------------------------|----|---------------------------|
| 1  | SONIC DRIVE-IN BRAND SIGN | 15 | SONIC DRIVE-IN BRAND SIGN |
| 2  | SONIC DRIVE-IN BRAND SIGN | 16 | SONIC DRIVE-IN BRAND SIGN |
| 3  | SONIC DRIVE-IN BRAND SIGN | 17 | SONIC DRIVE-IN BRAND SIGN |
| 4  | SONIC DRIVE-IN BRAND SIGN | 18 | SONIC DRIVE-IN BRAND SIGN |
| 5  | SONIC DRIVE-IN BRAND SIGN | 19 | SONIC DRIVE-IN BRAND SIGN |
| 6  | SONIC DRIVE-IN BRAND SIGN | 20 | SONIC DRIVE-IN BRAND SIGN |
| 7  | SONIC DRIVE-IN BRAND SIGN | 21 | SONIC DRIVE-IN BRAND SIGN |
| 8  | SONIC DRIVE-IN BRAND SIGN | 22 | SONIC DRIVE-IN BRAND SIGN |
| 9  | SONIC DRIVE-IN BRAND SIGN | 23 | SONIC DRIVE-IN BRAND SIGN |
| 10 | SONIC DRIVE-IN BRAND SIGN | 24 | SONIC DRIVE-IN BRAND SIGN |
| 11 | SONIC DRIVE-IN BRAND SIGN | 25 | SONIC DRIVE-IN BRAND SIGN |
| 12 | SONIC DRIVE-IN BRAND SIGN | 26 | SONIC DRIVE-IN BRAND SIGN |
| 13 | SONIC DRIVE-IN BRAND SIGN | 27 | SONIC DRIVE-IN BRAND SIGN |
| 14 | SONIC DRIVE-IN BRAND SIGN | 28 | SONIC DRIVE-IN BRAND SIGN |
| 15 | SONIC DRIVE-IN BRAND SIGN | 29 | SONIC DRIVE-IN BRAND SIGN |
| 16 | SONIC DRIVE-IN BRAND SIGN | 30 | SONIC DRIVE-IN BRAND SIGN |
| 17 | SONIC DRIVE-IN BRAND SIGN | 31 | SONIC DRIVE-IN BRAND SIGN |
| 18 | SONIC DRIVE-IN BRAND SIGN | 32 | SONIC DRIVE-IN BRAND SIGN |
| 19 | SONIC DRIVE-IN BRAND SIGN | 33 | SONIC DRIVE-IN BRAND SIGN |
| 20 | SONIC DRIVE-IN BRAND SIGN | 34 | SONIC DRIVE-IN BRAND SIGN |
| 21 | SONIC DRIVE-IN BRAND SIGN | 35 | SONIC DRIVE-IN BRAND SIGN |
| 22 | SONIC DRIVE-IN BRAND SIGN | 36 | SONIC DRIVE-IN BRAND SIGN |
| 23 | SONIC DRIVE-IN BRAND SIGN | 37 | SONIC DRIVE-IN BRAND SIGN |
| 24 | SONIC DRIVE-IN BRAND SIGN | 38 | SONIC DRIVE-IN BRAND SIGN |
| 25 | SONIC DRIVE-IN BRAND SIGN | 39 | SONIC DRIVE-IN BRAND SIGN |
| 26 | SONIC DRIVE-IN BRAND SIGN | 40 | SONIC DRIVE-IN BRAND SIGN |
| 27 | SONIC DRIVE-IN BRAND SIGN | 41 | SONIC DRIVE-IN BRAND SIGN |
| 28 | SONIC DRIVE-IN BRAND SIGN | 42 | SONIC DRIVE-IN BRAND SIGN |
| 29 | SONIC DRIVE-IN BRAND SIGN | 43 | SONIC DRIVE-IN BRAND SIGN |
| 30 | SONIC DRIVE-IN BRAND SIGN | 44 | SONIC DRIVE-IN BRAND SIGN |



|   |   |  |  |  |  |
|---|---|--|--|--|--|
| <b>SONIC DRIVE-IN</b><br><b>STORE #XXXX</b><br><b>F.M. 156</b><br><b>Ponder, TX</b><br><b>EXTERIOR ELEVATIONS</b><br><b>&amp; SCHEDULES</b> | <p>AMERICA'S DRIVE-IN BRAND PROPERTIES LLC<br/>         OTHER THAN BY THE DESIGNATED SONIC DRIVE-IN OWNER FOR CONSTRUCTION OF THE DRIVE-IN AT THE SPECIFIED LOCATION.</p> | <b>SONIC CORP.</b><br>300 JOHNNY BENCH DR<br>OKLAHOMA CITY, OK 73104<br>OFFICES: 405-225-5000<br>FAX: 405-225-5991<br>2021 | <p><b>AVANT DESIGN GROUP, INC.</b><br/>         Firm Certificate of Authority CA01453<br/>         P.O. BOX 59226 DALLAS, TX 75229<br/>         214.568.3100</p> | <b>NO</b><br>DATE<br>ISSUES AND REVISIONS  |  |
|   |   |  |  | <b>DATE</b><br>04-25-22<br><b>ISSUES AND REVISIONS</b><br>Submitted For City Design Review |  |
| <b>PROJECT</b><br><b>A2</b>   | <b>DWG:</b><br>6810-A2  |  |  |  |  |