

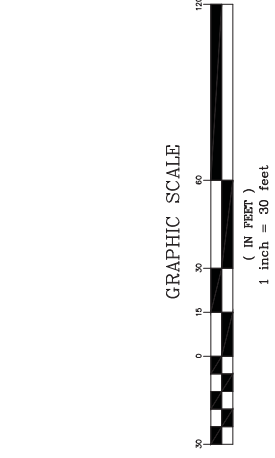
- GENERAL NOTES**
1. THE PROJECT HORIZONTAL DATUM SHOWN HEREON IS IN THE NEW JERSEY STATE PLANE COORDINATE SYSTEM (NAD83) NORTH AMERICAN DATUM (NAD) 1983, NATIONAL ADJUSTMENT (NA) 2011.
  2. THE PROJECT VERTICAL DATUM SHOWN HEREON IS THE NORTH AMERICAN VERTICAL DATUM OF 1988 (NAV88) (GEOID 12B) AS DERIVED FROM NATIONAL GEODETIC SURVEY CONTROL STATIONS USING GNSS RTN OBSERVATIONS.
  3. ALL LINEAR DIMENSIONS, ELEVATIONS AND COORDINATES, UNLESS OTHERWISE NOTED ARE U.S. SURVEY FEET (AT GRADE).
  4. SITE FEATURES AND INFORMATION SHOWN HEREON IS THE RESULT OF A FIELD SURVEY PERFORMED BY VAN NOTE HARVEY A DIVISION OF PENNONI, ON APRIL 12, 2023.
  5. CAUTION: IF THE DOCUMENT DOES NOT CONTAIN THE RAISED IMPRESSION SEAL OF THE PROFESSIONAL ENGINEER, IT IS NOT AN AUTHORIZED ORIGINAL DOCUMENT AND MAY HAVE BEEN ALTERED.
  6. THE DEPICTION OF UNDERGROUND FEATURES HEREON IS APPROXIMATE UNLESS OTHERWISE NOTED. CONFIRMATION OF THE POSITION AND DEPTH OF ANY UNDERGROUND FEATURE IS REQUIRED PRIOR TO ANY EARTH DISTURBANCE.
  7. NO RESPONSIBILITY OR LIABILITY IS ASSUMED BY THE SURVEYOR FOR LOCATION OF ANY UNDERGROUND UTILITY OR MANHOLE WHICH IS NOT VISIBLE ON THE SURFACE OF THE LANDS SHOWN HEREON.
  8. METERS AND ROADWAY INFORMATION/CONSTRAINTS IF ANY HAVE NOT BEEN DELINEATED OR SHOWN HEREON.
  9. PRIOR TO ANY EARTH DISTURBANCE, CONTACT "NEW JERSEY ONE CALL" AT 811 OR 1 (800) 272 1000.
  10. THIS PLAN WAS PREPARED IN A MANNER CONSISTENT WITH THE CARE ORDINARILY EXERCISED BY A PROFESSIONAL ENGINEER UNDER THE SAME CIRCUMSTANCES AND CONDITIONS. THE CONSULTANT MAKES NO OTHER REPRESENTATIONS OR WARRANTIES, WHETHER EXPRESSED OR IMPLIED, WITH RESPECT TO THE SERVICES RENDERED.

- LEGEND:**
- EXISTING GROUND SPOT SHOT
  - EXISTING CLEAN-OUT
  - EXISTING SANITARY MANHOLE
  - EXISTING STORMWATER INLETS
  - EXISTING FLARED END SECTION
  - EXISTING BRANCHED STORMWATER MANHOLE
  - EXISTING WATER VALVE
  - EXISTING HYDRANT
  - EXISTING LIGHT POLE
  - EXISTING UTILITY BOX
  - EXISTING SIGNS
  - EXISTING UTILITY POLE
  - EXISTING JUNCTION BOX
  - EXISTING TREE LOCATION

- ABBREVIATIONS:**
- BB = BOTTOM OF BANK
  - BC = BOTTOM OF CURB
  - DC = DEPRESSED CURB
  - GR = GRATE
  - GV = GAS VALVE
  - HW = HUB OF MANHOLE
  - TC = TOP OF CURB
  - WV = WATER VALVE



PENNINGTON BOROUGH TAX MAP  
SHEET No. 4



**van note-harvey division of pennoni**  
103 College Road East • Princeton, NJ 08540 • 609-986-7233  
211 Edgely Drive • Cape May Court House, NJ 08210 • 609-465-2800  
www.vannoteharvey.com  
Certificate of Authorization  
No. 24GA0803300

**CONCEPT LAYOUT PLAN 2**  
OF PORTIONS OF  
ROCKWELL GREEN DRIVE, SCUDDER COURT,  
AND CHADWELL COURT  
PREPARED FOR  
PENNINGTON BOROUGH  
SITUATED IN  
MERCER CO., N.J.  
JULY 8, 2023

DATE	07/08/23	DATE OF SCL	
DRAWN BY	MDV	FIELD BK	
CHECKED BY	BMF	PAGE	777-77-77
DATE	07/08/23	ORDER	800P2302
		FILE No.	
		SHEET No.	2 OF 2

**BRIAN R. PERRY**  
N.J. PROFESSIONAL ENGINEER LIC. NO. 62 45929