

PREPARED FOR

October 8, 2024

**City of Pleasant Hill,
Missouri**

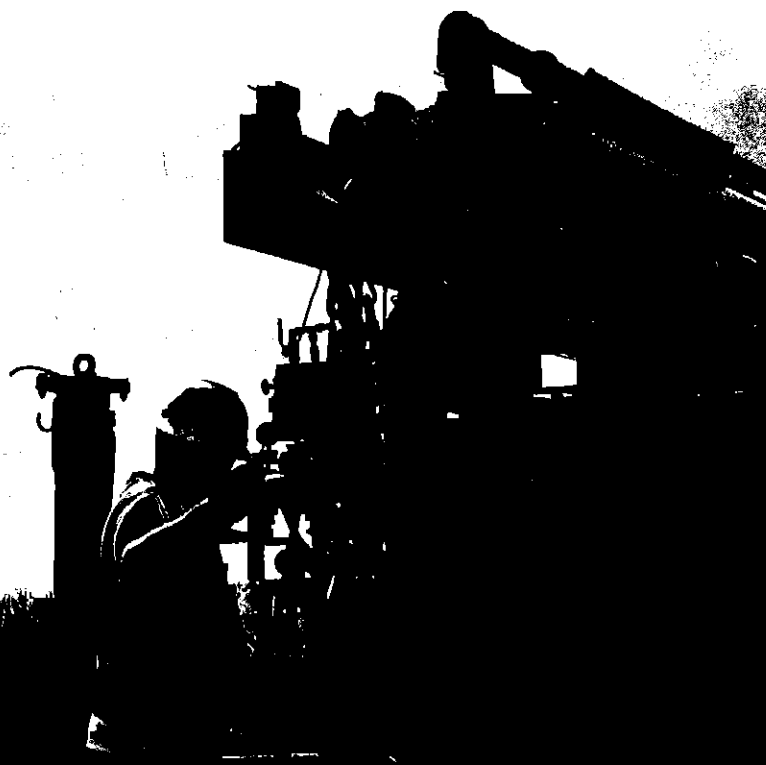
Proposal for

On-Call Geotechnical Services

SUBMITTED BY



ALPHA-OMEGA GEOTECH



CITY OF PLEASANT HILL ON-CALL GEOTECHNICAL SERVICES



1701 STATE AVENUE
KANSAS CITY, KS 66102

P 913.371.0000
F 913.371.6710

AOGTECH.COM

City of Pleasant Hill, Missouri
Shelby Teufel, City Administrator
Pleasant Hill City Hall, 203 Paul St.
Pleasant Hill, Missouri, 64080

October 8, 2024

Re: Request for Qualifications – On-Call Geotechnical Services

Dear Shelby:

Alpha-Omega Geotech (AOG) is proud to partner with The City of Pleasant Hill and to bring to your projects our group of seasoned engineers and technicians with extensive local knowledge of ground conditions in and around Pleasant Hill, Missouri. Alpha-Omega Geotech (AOG) is eager to submit our qualifications and express our strong interest in providing the Geotechnical Engineering Scope of Services for the City of Pleasant Hill's police station and animal shelter projects. These projects align perfectly with our expertise, and we are confident that our extensive local knowledge, technical capabilities, and passion for the development of our region will allow us to deliver exceptional results.

With four decades of local experience and a full complement of locally experienced laboratory, engineering, inspection, and drilling professionals, we offer expertise along the entire scope of geotechnical services.

AOG offers the strong project management capability, staff expertise, flexibility, and cost control that work together to lower costs, reduce risk, and deliver maximum value on a project like this. But the following factors are what set us apart as the Geotech experts in metropolitan Kansas City, working like no one else in the area to equip our clients with the confidence and real-world solutions that make for a worry-free experience:

- **We work exclusively within a 100-mile radius of Kansas City.** With nearly 40 years of local experience, and a long-standing commitment to developing local talent, we know the ground like no one else and practice with a passion for the growth and development of our hometown. Our seasoned vets offer The City of Pleasant Hill specialization, expertise, and passion. We know what we do, and we do it well and can **support the design and construction team throughout the entire construction lifecycle**—from site investigation and recommendations, through design and project completion.



CITY OF PLEASANT HILL ON-CALL GEOTECHNICAL SERVICES

- **The boutique nature of our firm provides you with a balance of capacity, capability, and personalized service.** Our scope of capability and personnel capacity offers The City of Pleasant Hill the right mix of immediate resources; the agility to work with your entire project team; and the mature, rigorous processes that will maintain the quality, safety, and integrity of this project. We match this with individual attention, providing you with a single, accessible, consistent presence.
- **We have a full-service geotechnical materials testing laboratory,** managed by a long-time expert in local soil and rock materials and staffed with lab technicians that have spent decades sifting through Kansas City soil and rock materials.

At our core is the simple but enduring commitment to engineering excellence. We work every day to live up to our raving fans and spotless reputation, to provide an exceptional professional experience for our clients, our partners, and our employees. We look forward to partnering with The City of Pleasant Hill on this work.

Please contact me with any questions and discuss the next steps. We will follow-up with you a week from today as we know this project is moving quickly.

With appreciation for the opportunity,



Dave Flessner
Director of Business Development
Alpha-Omega Geotech, Inc.
dflessner@AOGeotech.com
913-371-0000



TABLE OF CONTENTS

SECTION 1: FIRM QUALIFICATIONS	5
ABOUT AOG	6
Our Story	6
Our Values	7
Engineering Excellence.	7
Reliability.	7
Passion.	7
Discovery.	7
Why AOG	8
Focused	8
Local	8
Seasoned	8
Responsive	8
Capabilities + Expertise	9
Your Local Expert and Partner	9
Delivering Quality Results Efficiently	9
ORGANIZATIONAL CHART FOR OVERALL TEAM	12
PROPOSED PERSONNEL	13
4.1.1 Role – Alpha Omega Geotech	13
Experience	15
Professional Organizations	15
PROJECT EXPERIENCE	19
Availability	26
REFERENCES	30
Highlighted PROJECTS	30



October 8, 2024

Section 1: Firm Qualifications

ABOUT AOG

Specialty Simplified + Real-World Confidence

Alpha-Omega Geotech is a boutique engineering firm with extensive local knowledge of ground conditions in Kansas and Missouri and a dedicated focus on the entire scope of geotechnical services. Here, at the nexus of focus and experience, our expertise offers our partners a secure foundation for their projects and their people – and the peace of mind that comes with knowing that at the worst possible moment, their building is solid.

Founded by a brilliant but practical geotechnical engineering professor from The University of Kansas—well-versed in theory but not buried by it—we were born and remain a firm focused on the fundamentals. We get on site. We're responsive to calls. We design and consult with the confidence of having been there before, owning our decisions while always keeping our clients' specific strategic goals in mind.

Today, with over 40 years of local experience, we're building the foundation of Kansas City, producing some of the area's most impressive and substantial geotech projects. With a full complement of locally experienced laboratory, engineering, inspection, and drilling professionals, we offer expertise along the entire scope of geotechnical services, providing our clients a worry-free experience from start to finish.

OUR STORY

AOG was born in 1982 in the mind of an esteemed professor with a heart for finding better answers in Kansas City's soil. Dr. Roy J. Leonard Ph.D., P.E., R.G. believed that unlocking the potential of Kansas City construction was about engineering the best overall solution for each project -- not just the easiest or the most conservative. And he knew the only way to make it happen was through close collaboration, painstaking practice, and an extraordinary dedication to first-hand experience in the local subgrade. AOG was seeded as a forward-thinking culture driven to forge the land into opportunities for a community that counted on us.

Today, we're widely recognized as Kansas City's hometown geotech firm, known for the service behind our handshakes and rock-solid, customized solutions confidently delivered by some of the most experienced construction veterans around. We rise to the toughest challenges, and we thrive on solving the most complicated problems, but we never claim to be anything more than what we've always been: the best damn Geotech in Kansas City.

OUR VALUES



Engineering Excellence.

At our core is the simple but enduring commitment to engineering excellence. We work every day to live up to our raving fans and spotless reputation, to provide an exceptional professional experience for our clients, our partners, and our employees. This experience is defined by simple elegant solutions, easy working relationships, unwavering quality, safety that doesn't cut corners—and the peace of mind that results.



Reliability.

We measure business success not in projects constructed or in offices opened but in relationships built on trust. We have long-term histories in this town—with our clients, our partners, and our employees, and people count on us, for our consistency, our confidence, and our competence. We do not take that for granted.



Passion.

The beating heart of our practice is our passion. We think of ourselves collectively as engineers' engineers, infusing our delivery with unquantifiable qualities like gut instincts and natural ability. We take pride in our specialized technical expertise, and we believe in our agile and adaptable processes, but at the end of the day, the intangible element of our success is that we simply love what we do.



Discovery.

Vital to our partnerships is our commitment to discovery—to collaborating with our clients to explore and respond to their specific needs. We do not rely on prescribed processes or pre-fabricated solutions; instead, we listen, we tailor, we adapt and then we provide the right mix of services across the design and construction project life-cycle.

WHY AOG

Focused

Our sole focus is on full-service geotechnical engineering. We don't try to be all things to all people, and we offer this as an asset: Specialization, expertise, passion—living and breathing geotechnical engineering, laboratory testing, and special inspection.

We deliver geotechnical services along the entire construction lifecycle—from site investigation and recommendations, through design and project completion. As a full-service specialty engineering firm, our field technicians are not only familiar with native soil mechanics; they also provide onsite troubleshooting that allows responsive field mitigation throughout the construction lifecycle.

Local

We work exclusively within a 100-mile radius of Kansas City. With over 40 years of local experience, and a long-standing commitment to developing local talent, we employ engineers and laboratory and drilling professionals who know the conditions and the community. We take pride in our local reputation, in connecting with people and not just projects, and in celebrating our KC roots: We were born here. We were raised here. And we'll stay here.



Seasoned

Our seasoned vets have earned their reputation: We know what we do, and we do it well. Where other firms send junior technicians to the field who are quick to label a situation as “non-conforming conditions” and refer their client to the engineer for a billing opportunity, our senior technicians are knowledgeable and empowered to quickly make recommendations and validate those recommendations with our engineers. In addition, all of our techs are on career paths at AOG with continuous additional training and certifications.

Responsive

Our responsive solutions are built on a commitment to collaboration. At the end of the day, we are problem solvers, true consultants and partners working to respond to our clients' unique challenges. This requires a devotion to listening and guidance—to asking in lieu of telling, and to tailoring processes and approaches that deliver affordable, common-sense solutions at the point of need. Your project is indeed your project, and we develop design and construction recommendations in concert with our clients and partners and their strategic goals.

CAPABILITIES + EXPERTISE

Your Local Expert and Partner

AOG has a long history of working with many of the jurisdictions in Kansas and Missouri and that experience translates into big value for our clients.

- **Tenure:** One of the oldest and most acclaimed soil and concrete testing laboratories in the Kansas City region
- **Knowledge:** Decades of forensic subsurface experience working with just about every kind of soil and rock material found in Kansas and Missouri
- **Experience:** Specialists in evaluating complex sites, difficult terrains, and unpredictable conditions

We know the local ordinances and building codes, and many local planning and development officials know us and trust our work. This translates to expedited services and results for your project. Our team can perform all geotechnical Special Inspections required to comply with Kansas and Missouri building codes and monitor compliance throughout all phases of construction.

Delivering Quality Results Efficiently

We operate one of the most acclaimed soil and concrete testing practices in the region, including a full-service soil, concrete, aggregate, and asphalt testing facility. Our laboratory is managed by a long-time expert in local soil and rock materials and staffed with lab technicians that have spent decades sifting through Kansas City soil and rock materials. Because the soil in and around Kansas City is not the same as the soil in other parts of the country, our test results give project leaders the insight and confidence they need to make decisions with better accuracy, fewer risks, and quick turnaround. Our laboratory meets the requirements of ASTM E329 and AASHTO for the tests that we perform.

Knowledge of Kansas City's soils along with an affinity for concrete construction make AOG a go-to resident affiliate for local and national engineering, architectural, and construction firms.

We have an in-house QA/QC program that requires our equipment to be calibrated at various intervals depending on the type of equipment with a maximum of 12 months on any single piece of equipment. Because we operate our own equipment and testing laboratory, we move quickly, providing fast results, excellent solutions, and in-depth knowledge of area soil compositions. Clients who work with us appreciate that our services are "in-house," providing faster response times and direct pricing without subcontractor mark-ups.

AOG uses the most current technology to expedite response times, field reporting, and to provide elevated customer service. Our field technicians use MetaField by Agile Frameworks, a field and lab information management system where data and is uploaded to a cloud instantly.

MetaField represents a major step for AOG. We adopted the software solution in 2019 to break down traditional barriers and tighten up workflows, for better, faster results. MetaField pulls together data from our business office, in-house laboratory, and field operations into a focused cloud stream across tablets, smartphones and desktops. MetaField provides AOG with the ability to process test results within hours, as needed, and includes reports, concrete and masonry tests, steel inspections, and more. MetaField also gives AOG's work more transparency to help clients and partners drill deeper for more informed decision-making.

YOUR DEDICATED AOG TEAM



With AOG, The City of Pleasant Hill gains a geotechnical team who are truly regional experts. Our senior technicians are knowledgeable and empowered to quickly make recommendations and validate those recommendations with our engineers—often at no additional expense to you.

As a full-service specialty engineering firm, our field technicians are not only familiar with native soil mechanics, but they also provide onsite troubleshooting that allows responsive field mitigation throughout the construction lifecycle. Our special inspections team works on-site to obtain information about your property's subsurface conditions. We frequently measure the thermal resistivity of soils or backfill materials required for underground transmission lines, oil and gas pipelines, radioactive waste disposal, and solar thermal storage facilities. We monitor materials and workmanship and ensure compliance with approved plans, specs, building codes, ordinances, and more.

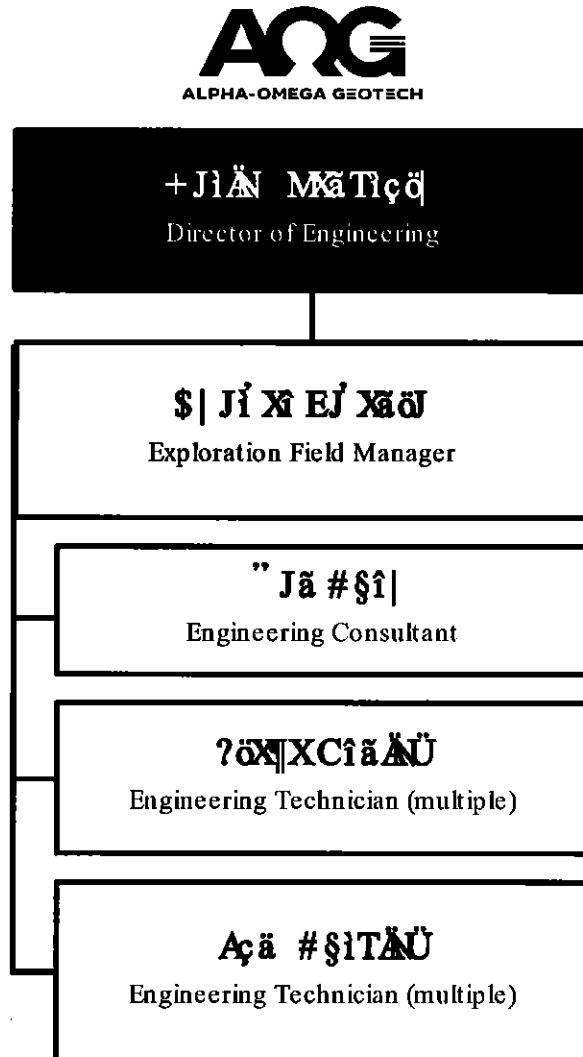
TENURED AND CERTIFIED

We have completed thousands of geotechnical reports for projects and performed inspections on thousands more. Our staff has almost 200 years of combined geotechnical and material testing experience. We have a team of full-time technicians, a working field manager, and a field engineer that is a geotechnical professional engineer. Nearly all team members have over 10 years of experience in the field, and all hold multiple industry certifications.

Please find below a comprehensive list of our team's certifications: Professional Engineers – Missouri and Kansas Certified

- Certified OSHA 40-Hour Hazardous Waste Site Operations
- Certified ICBO Special Inspector for Structural Steel and Welding
- Certified ICBO Special Inspector for Structural Masonry
- Certified ACI Concrete Field-Testing Technician-Grade I
- ICC Reinforced Concrete Special Inspector
- ICC Soils Special Inspector
- ICC Reinforced Masonry Special Inspector
- KDOT Aggregate Field-Testing Technician
- KDOT Construction Inspector, Level IIAC
- MDOT Level I Concrete Testing Technician, Strength Testing Technician
- PTI (Post-Tension Institute) Level II Inspector
- NICET Certified, Level I and Level II, Construction Materials Testing, Soils
- ACI Level I Concrete Testing Technician
- CPR, American Heart Association

ORGANIZATIONAL CHART FOR OVERALL TEAM



PROPOSED PERSONNEL

4.1.1 ROLE – ALPHA OMEGA GEOTECH

Principal Geotechnical Engineer	Garic Abendroth	2009
Senior Geotechnical Project Manager	Charles Valenta	2018
Senior Driller	Kevin Kempton	2020
Senior Laboratory Manager	Tom Burdick	1990
Concrete & Asphalt Laboratory Technician Proctors, Classifications, Index Properties; Certified Nuclear Densometer operator	DJ Burdick	1995
Senior Engineering Technician ACI Level I Concrete Technician, ICC Level II Field Technician, NICET Level I, Construction Materials Testing, ICC Reinforced Concrete Inspector, ICC Masonry Inspector, Certified Nuclear Densometer Operator	Calvin Hiebert	2011
Senior Engineering Technician ACI Level I Concrete Technician, ACI Level II Concrete Inspector, ICC Level II Field, Technician, Construction Materials Testing, Certified Nuclear Densometer Operator	Jeff Marquez	2012
Engineering Technician ACI Level I Concrete Technician	Chase Behler	2021
Engineering Technician ACI Level I Concrete Technician, Dipstick Floor Profiler, Nuclear Gauge Safety	Bill Connelly	2020
Engineering Technician ACI Level I Concrete Technician	Alan Meja	2022
Engineering Technician ACI Level I Concrete Technician, Dipstick Floor Profiler, Nuclear Gauge Safety	Cody Curtis	2021

CITY OF PLEASANT HILL ON-CALL GEOTECHNICAL SERVICES**AOG Qualifications**

Engineering Technician ACI Level 1 Concrete Technician	Marquis Gaston	2021
Engineering Technician - Concrete FF/ FL	Bill Connelly	2020
Engineering Technician - Steel	Steve Usnick	1994

J. Allan Bush, P.E.

President & Chief Engineer | jabush@AOGeotech.com

As AOG's president and a lifelong engineer, Allan's passion is geotechnical engineering and geology and how AOG can continue to serve Kansas City. He has worked on geotechnical projects in the Kansas City metropolitan area for more than 30 years.

EXPERIENCE

Alpha-Omega Geotech, Inc. – 1993 to Present.

"Have been a geotechnical engineering consultant on hundreds of projects including foundations for various buildings (spread footings, mats, vibrating machine foundations, driven and auger-cast piles, drilled piers and underpinning), temporary and permanent retaining walls (tiebacks, cantilevered, stacked stone, reinforced earth), earth structures (dams and embankments), slope stability analyses (soil and rock), special structures (bridges and towers), soil stabilization and pavement design (flexible and rigid). I have also supervised and provided oversight for a broad range of construction material testing and engineering services. In addition, I have also conducted over 150 Phase I Environmental Site Assessments in the greater Kansas City metropolitan area."

PROFESSIONAL ORGANIZATIONS

American Society of Civil Engineers; National Society of Professional Engineers; Deep Foundations Institute; Association of Drilled Shaft Contractors, International Conference of Building Officials; American Society of Testing and Materials; American Welding Society; American Public Works Association; National Institute for Engineering Ethics; Association of State Dam Safety Officials

American Concrete Institute: 360 Committee – Design of Slabs on Grade

American College of Forensic Examiners – Diplomate Status

EDUCATION

University of Missouri-Rolla,
Civil Engineering, B. S., 1992

University of Missouri-Kansas City,
Continued Graduate Level
Education

CERTIFICATIONS

Certified OSHA 40-Hour
Hazardous Waste Site Operations

Certified ICBO Special Inspector
for Structural Steel and Welding

Certified ICBO Special Inspector
for Structural Masonry

Certified ACI Concrete Field-
Testing Technician-Grade I

PROFESSIONAL REGISTRATION

Licensed Professional Engineer
Kansas [#14890]

Licensed Professional Engineer
Missouri [E-29524]

TEAM MEMBER EXPERIENCE AND REFERENCES**Garic Abendroth, P.E.****Engineering Department Manager**gabendroth@AOGeotech.com

Garic was introduced to the construction field early on as an apprentice in a family-run construction company. His Civil Engineering degree brings him the cumulative knowledge that intersects soil and structure. Having full-cycle awareness allows Garic to remedy the unexpected and drive collaboration across construction processes.

EXPERIENCE**Alpha-Omega Geotech, Inc. – 2009 to Present**

Geotechnical engineering consultant on projects including foundations for buildings, permanent retaining walls, earth structures, slope stability analyses, special structures, soil stabilization and pavement design. Manage, supervise, and provide oversight for a broad range of drilling, construction material testing and geotechnical engineering services. Conduct and/or supervise many soil, concrete, and asphalt forensic investigations in the greater Kansas City area. Test and inspect concrete, concrete reinforcement, soil, drilled piers, auger cast piles and masonry.

Twin Ports Testing Superior, WI – 2008 to 2009 | Geotechnical Engineer

Developed department business and marketing strategies, determined clients' needs, and developed scope of services to meet those needs. Managed geotechnical investigations, and prepared geotechnical proposals and reports.

Other Experience

- Braun Intertec, Rochester, MN – 2006 to 2008 | Project Engineer
- MnDOT, Rochester, MN – 2002 to 2006 | Grad. 2 Eng/ Senior Eng- Const.
- Bartlett & West Engineers, Topeka, KS – 2000 to 2002 | Field Technician
- Western Summit Constructors, Denver, CO – 1998-1999 | Field/ Safety Engineer

ORGANIZATIONS AND AFFILIATIONS

American Society of Civil Engineers (ASCE)

EDUCATION

- Kansas State University, Civil Engineering, B.S., 1997

CERTIFICATIONS AND LICENSES

- Certified OSHA 40-Hour Safety
- Fall Protection Training
- Confined Space Entry Training
- Level I Firestop Training
- Certified ACI Concrete Field Testing Technician – Grade I
- DOT Certification Aggregate Production, Grading, and Base, Concrete Field I and II

PROFESSIONAL REGISTRATION

- Licensed Professional Engineer, Kansas [#20708]
- Licensed Professional Engineer, Missouri [E - 2009023262]

REFERENCES

- Lenexa Justice Center
- Lee's Summit Fire Station
- Charles E. Whittaker U.S. Courthouse
- Platte City - City Hall & Police Headquarters
- Lenexa Fire Station #3
- Cass County Jail
- Shawnee Fire Station #5, 71 & 73
- Jackson County Courthouse
- Independence Fire Station #3 & 4
- North Kansas City, Missouri Fire Station #1

Steven C. Usnick, P.E.

Field Services Engineer

susnick@AOGeotech.com

Steven C. Usnick, P.E. started at AOG in 1994 as a field and lab technician. He was completing his degree in Civil Engineering and focused on geotechnical engineering. In 1996 he completed his degree and became a staff engineer until he received his P.E. in 2001. Since then, he has worked on hundreds of projects. Steve inspects structural steel welding and high-strength bolting. He is a licensed Professional Engineer in Kansas and Missouri.

EXPERIENCE

Alpha-Omega Geotech, Inc. – 1994 to Present

1998 to Present: Staff/Geotechnical Engineer

Planning and coordination of subsurface investigations, engineering analysis, and writing reports, Phase I environmental site assessments, field consultation on residential and commercial properties.

1996 to 1998: Field Engineer

Provided construction observation and monitoring services on large-scale commercial projects, special inspections, review of reports on field operations, and laboratory test reports.

1994 to 1996: Field/Laboratory Technician

Performed concrete field testing, engineered fill verification with a nuclear densitometer, inspection of deep and shallow foundation excavations and reinforcement, and laboratory classification, compaction, and permeability testing.

EDUCATION

- The University of Missouri-Kansas City, Civil Engineering, B.S., 1996

CERTIFICATIONS

- Certified KDOT Construction Inspector, Level IIAC
- Certified OSHA 40-Hour Hazardous Waste Site Operations

REGISTRATIONS

- Licensed Professional Engineer – Missouri [#2001018819]
- Licensed Professional Engineer – Kansas [#16833]

REFERENCES

- Lenexa Justice Center
- Lee's Summit Fire Station
- Platte City - City Hall & Police Headquarters
- North Kansas City, Missouri Fire Station #1
- Independence Fire Stations #3 & 4

Charles Valenta

Exploration Field Manager

cvalenta@AOGeotech.com

Charles Valenta has been involved in geotechnical field and drilling operations for over 20 years. During that time, he has provided geotechnical consulting on private, municipal, state, and federal projects of all sizes. He holds current certifications in National Drilling Association.

EXPERIENCE

Alpha-Omega Geotech, Inc. – 2018 to Present

Serves as a geotechnical field manager on hundreds of projects, Responsible for managing the day-to-day operations for two drill crews, scheduling & coordinating (internal & external), drilling instructions, utility locates and logistics, also scoping, estimating, writing geotechnical engineering proposals, negotiating the contract and project registration upon award of project. Maintain client contact throughout the life of the project and invoicing at completion of project. Developed a safety manual/program, implemented, and maintained status, insured DOT compliance was maintained. Responsible for equipment and tools, maintenance, services, and repairs, keeping ample supplies readily available. Tracking and maintaining financial goals. Strategic planning to improve operations, budget, productivity long-range planning and improving worker's safety.

Vertek/ ARA Inc. – 2016 to 2017

Responsible for general sales and marketing for Geotechnical and Environmental testing equipment. Contacting, managing and scheduling visits of existing and potential Clients. Prepare and manage marketing budget. Prepare quotes for equipment and tools. Manage and Schedule participation in industry related trade shows and educational seminars. Prepare and deliver presentations. Assist clients in solving problems.

Terracon Consultants, Inc. – 1999 to 2016

Responsible for standardizing drilling operations throughout Terracon's national operations. A member of the executive committee reviewing safety programs, along with implementing, and training. National administrative responsibility for the drilling fleet (96 operating drill rigs), as well as technical training. As a project manager I prepared job cost proposals, job cost forecasting, managed budgets, determined project specific needs, logistics, and assembled the required field staff based on project scope. National Account Manager for several multi million revenue clients.

EDUCATION

- United States Army
- Central Texas College
associate's degree, Applied Sciences

AFFILIATIONS

- Advanced Horizontal Construction
- National Drilling Association
- Army Engineer Association
- Society of American Military Engineers
- National Drilling Association (F)
- Basic Horizontal Construction

REFERENCES

- Lenexa Justice Center
- Lee's Summit Fire Station
- Leavenworth County- EMS Station #3
- Platte City - City Hall & Police Headquarters

PROJECT EXPERIENCE

AOG has provided construction observation and materials testing services on more than police station and life safety facility design and construction projects. Our experience is described below and on the following pages.

LENEXA JUSTICE CENTER – Lenexa, Kansas



Alpha-Omega Geotech feels a special pride in projects that further the public good and help local communities adapt to changing needs. That was the case at the Lenexa Justice Center. The \$73 million, massive modernization of the Police Department and Municipal Court will serve Lenexa well into the future. The two building complex, stretching across more than 116,000 square feet, took more than two years to build. AOG was there at the start with support ranging from the development of concrete shallow foundation systems, to concrete pours, and Special Inspections as the project got out of the ground.

Geotechnical Engineering Services

Our engineers helped design the foundation components, and we also performed all drilling, sampling, and lab testing to confirm the qualities of the soil and concrete. Regular soil testing for characteristics such as moisture content, density, and compaction ensures the ground can handle the load built upon it.

Special Inspections & Testing Services

We were also in charge of special structural and materials testing to ensure the project came together. Our inspections include materials constructed onsite, such as concrete and rebar. Our technicians inspected, calculated, measured, and tested materials to validate the quality and to identify discrepancies. We confirmed the integrity of virtually everything that touches or goes into the ground.



93,275
SF CONSTRUCTION



SERVICES PROVIDED

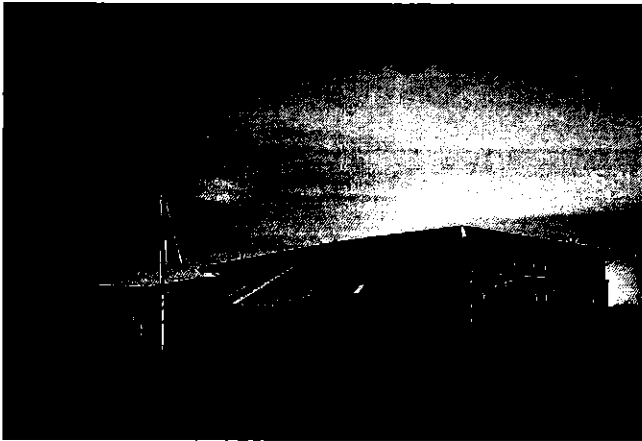
- Geotechnical engineering and drilling
- Special inspections
- Soil testing
- Soil compaction
- Special structural and materials testing
- Concrete inspections and testing



PROJECT TEAM

- **Owner:** City of Lenexa, KS
- **Architect:** Finkle + Williams Architecture
- **General Contractor:** JE Dunn Construction
- **Civil Engr:** Renaissance Infrastructure Consulting
- **Structural Engineer:** BSE Structural Engineers

Lee's Summit Fire Station #2 – Lee's Summit, Missouri



Lee's Summit Fire Station No. 2 is a 8,905-square-foot satellite station featuring two drive-through apparatus bays, bunkrooms for eight, a kitchen adjoined by a day room, fitness room and training room. With the need for gender-neutral living quarters, each pair of bunkrooms share a shower and restroom that provide full privacy. Inside the walls and roof spray insulation helps keep heat and cold out and maintain comfortable temperatures inside.

Geotechnical Engineering Services

Our engineers helped design the foundation components, and we also performed all drilling, sampling, and lab testing to confirm the qualities of the soil and concrete. Regular soil testing for characteristics such as moisture content, density, and compaction ensures the ground can handle the load built upon it.

Special Inspections & Testing Services

We were also in charge of special structural and materials testing to ensure the project came together. Our inspections include materials constructed onsite, such as concrete and rebar. Our technicians inspected, calculated, measured, and tested materials to validate the quality and to identify discrepancies. We confirmed the integrity of virtually everything that touches or goes into the ground.



8,905
SF CONSTRUCTION



SERVICES PROVIDED

- Geotechnical engineering and drilling
- Special inspections
- Soil testing
- Soil compaction
- Special structural and materials testing
- Concrete inspections and testing



PROJECT TEAM

- **Owner:** City of Lee's Summit, MO
- **Architect:** WSKF Architects
- **General Contractor:** Straub Construction
- **Civil Engr:** Bibb Engineering

Fire Station #4 —Independence, Missouri



Fire Station Four is a key second response company for all fire calls in central and western Independence, and the 50-year old one-bay fire station was too small to service the community needs. We worked closely with city managers, fire station chiefs and their fire department staff and esign team to develop a workable design for the Fire Station that fit into the city's budget, aesthetic interests and time frame.

Geotechnical Engineering Services

AOG provided geotechnical drilling, soil/rock laboratory testing and engineering recommendations. We followed along during construction to ensure all recommendations were followed, with on-site observations and material testing throughout the project's completion.

Special Inspections & Testing Services

AOG provided special inspections and material testing. All testing and inspections were completed on time and within the budget.

"Alpha Omega has been a great partner on projects. They are quick to respond to fast deadlines and provide multiple solutions to problems a project may face." – Dustin Burton, P.E., Project Manager, Renaissance Infrastructure Consulting



12,400
SF CONSTRUCTION



SERVICES PROVIDED

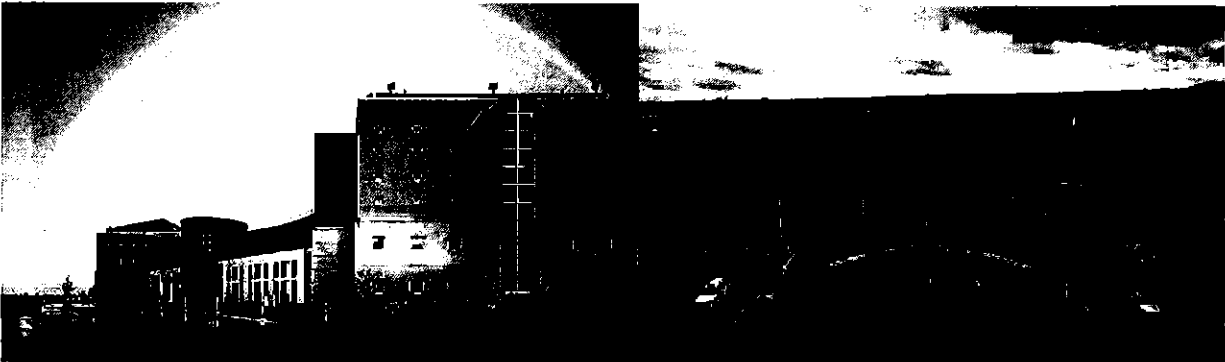
- Geotechnical drilling and engineering
- Special inspections and material testing
- Soil compaction and verification
- Fireproofing inspections
- Floor flatness testing
- Construction materials testing



PROJECT TEAM

- **Owner:** City of Independence, Missouri
- **Architect:** Yaeger Architecture
- **General Contractor:** Turner Construction

Douglas County Correctional Facility – Lawrence, KS



The Douglas County Correctional Facility is medium prison facility in Douglas County and is arranged on 17 sections of land in metropolitan Lawrence. It is located at 3601 East 25th Street, Lawrence, KS. The 196-bed office houses pre-preliminary prisoners. Notwithstanding its prison capacities, Douglas County Correctional Facility gives reintegration programming to male condemned criminals.

Geotechnical Engineering Services

Our engineers helped design the foundation components, and we also performed all drilling, sampling, and lab testing to confirm the qualities of the soil and concrete. Regular soil testing for characteristics such as moisture content, density, and compaction ensures the ground can handle the extraordinary load built upon it.

Special Inspections & Testing Services

We were also in charge of special structural and materials testing to ensure the project came together. Our inspections include materials constructed onsite, such as concrete and rebar. Our technicians inspected, calculated, measured, and tested materials to validate the quality and to identify discrepancies. We confirmed the integrity of virtually everything that touches or goes into the ground.



706
Bed Capacity



SERVICES PROVIDED

- Geotechnical engineering and drilling
- Special inspections
- Soil testing
- Soil compaction
- Special structural and materials testing
- Concrete inspections and testing



PROJECT TEAM

- **Owner:** Douglas County Kansas
- **Architect:** Treanor HL
- **General Contractor:** Turner Construction
- **Civil Engr:** Land Plan Engineering

Cass County Missouri Jail —Harrisville, MO



Cass County Missouri Jail is a medium security level County Jail located in the city of Harrisonville, Missouri. The facility houses Male Offenders who are convicted for crimes which come under Missouri state and federal laws. The facility has a capacity of 136 inmates, which is the maximum number of beds per facility.

The project included 8,000 square feet of interior renovations to the existing jail, which remained fully-operational throughout construction. The project increased the jail's capacity by more than 60 beds by providing three additional housing units. In addition, furniture was installed in three existing housing units, and renovations were completed in booking and medical spaces.

Geotechnical Engineering Services

AOG provided geotechnical drilling, soil/rock laboratory testing and engineering recommendations. We followed along during construction to ensure all recommendations were followed, with on-site observations and material testing throughout the project's completion.

Special Inspections & Testing Services

AOG provided special inspections and material testing. All testing and inspections were completed on time and within the budget.

"Alpha Omega has been a great partner on projects. They are quick to respond to fast deadlines and provide multiple solutions to problems a project may face." – Dustin Burton, P.E., Project Manager, Renaissance Infrastructure Consulting



8000

SF
CONSTRUCTION



SERVICES PROVIDED

- Geotechnical drilling and engineering
- Special inspections and material testing
- Soil compaction and verification
- Fireproofing inspections
- Floor flatness testing
- Construction materials testing



PROJECT TEAM

- **Owner:** Cass County, Missouri
- **Architect:** Treanor HL
- **General Contractor:** Turner Construction

Table 1: With AOG, The City of Pleasant Hill gains a special inspections team who are genuinely regional experts. The table below lists our experience performing geotechnical engineering and construction observation and materials testing services on judicial and public safety facilities.

Client	Project Name	Services Provided
City of Lenexa	Lenexa Justice Center	Geotechnical Engineering
City of Platte City, Missouri	Platte City - City Hall & Police Headquarters	Geotechnical Engineering Construction Observation and Materials Testing
City of Kansas City, Missouri	Kansas City, Missouri Police Headquarters	Geotechnical Engineering
City of Spring Hill, Kansas	Springhill Police Station	Construction Observation and Materials Testing
Cass County, Missouri	Cass County Jail Reconstruction	Construction Observation and Materials Testing
Douglas County, Kansas	Douglas County Correctional Facility	Geotechnical Engineering
Grant County, Kansas	Grant County Jail	Construction Observation and Materials Testing
GSA	Charles E. Whittaker U.S. Courthouse	Geotechnical Engineering Construction Observation and Materials Testing
Jackson County, Missouri	Jackson County Courthouse	Construction Observation and Materials Testing
City of Leavenworth, Kansas	Leavenworth Courthouse	Construction Observation and Materials Testing
City of Lee's Summit, Missouri	Lee's Summit Fire Station	Geotechnical Engineering Construction Observation and Materials Testing
Leavenworth County, Kansas	Leavenworth County- EMS Station #3	Geotechnical Engineering Construction Observation and Materials Testing
Johnson County, Kansas, Kansas	Lenexa Fire Station #3	Geotechnical Engineering Construction Observation and Materials Testing
City of Shawnee, Kansas	Shawnee Fire Station 71	Geotechnical Engineering Construction Observation and Materials Testing
City of Shawnee, Kansas	Shawnee Fire Station 73	Geotechnical Engineering Construction Observation and Materials Testing

City of Shawnee, Kansas	Shawnee Fire Station #5	Construction Observation and Materials Testing
City of Raytown, Missouri	Raytown Fire Station	Construction Observation and Materials Testing
City of Independence, Missouri	Independence Fire Station #3	Geotechnical Engineering Construction Observation and Materials Testing
City of Independence, Missouri	Independence Fire Station #4	Geotechnical Engineering Construction Observation and Materials Testing
City of Lawrence, Kansas	Lawrence Fire Station #3	Geotechnical Engineering Construction Observation and Materials Testing
City of North Kansas City, Missouri	North Kansas City, Missouri Fire Station #1	Geotechnical Engineering Construction Observation and Materials Testing
City of Concordia, MO	1-445 Concordia Fire Station	Geotechnical Engineering Construction Observation and Materials Testing
City of Leavenworth, KS	Leavenworth Fire Station #1	Geotechnical Engineering Construction Observation and Materials Testing
Johnson County, Kansas	JOCO Fire District #2 Station #84	Geotechnical Engineering Construction Observation and Materials Testing
City of Wakarusa, KS	Wakarusa Fire Station	Construction Observation and Materials Testing
City of Oak Grove, MO	Sni Valley Fire District #1	Construction Observation and Materials Testing
City of Camden Point, MO	Camden Point Fire/EMS Station	Construction Observation and Materials Testing
City of Lawson, MO	Lawson Community Fire & Rescue Protection District	Construction Observation and Materials Testing
City of Emma, MO	Emma Fire Station	Geotechnical Engineering
Jackson County, MO	Central Jackson County Fire Protection District (CJCFD)	Geotechnical Engineering Construction Observation and Materials Testing

AVAILABILITY AND COMMITMENT

Alpha-Omega Geotech (AOG) is fully available and committed to undertaking the scope of services identified for the City of Pleasant Hill. With our experienced team of engineers, technicians, and support staff, we have the capacity and capability to meet the project's demands. Our firm is structured to handle multiple projects simultaneously while maintaining the highest standards of quality and timeliness. AOG is ready to allocate the necessary resources and expertise to ensure the successful completion of this project.

We look forward to partnering with the City of Pleasant Hill and are committed to delivering exceptional geotechnical services throughout the entire duration of the project.

Alpha Omega Geotech, with 41 years of experience, is a leading firm specializing in Geotechnical Engineering, Testing, and Inspection services. Our extensive expertise and commitment to quality make us a trusted partner for a wide range of projects.

Capacity and Capability:

1. Comprehensive Geotechnical Services:

- Site characterization and soil analysis.
- Foundation recommendations and design.
- Slope stability and landslide analysis.
- Earthquake engineering and liquefaction analysis.

2. Full-Service Laboratory:

- State-of-the-art equipment for accurate and reliable testing.
- Soil, rock, and material testing adhering to ASTM and AASHTO standards.
- Rapid turnaround times for lab results to meet project schedules.

3. Special Inspections and Testing:

- Concrete and masonry inspections.
- Structural steel and welding inspections.
- Asphalt and pavement testing.
- Non-destructive testing methods.

4. Experienced Team:

- Licensed engineers, certified inspectors, and skilled technicians.
- Proven track record of delivering high-quality reports and recommendations.
- Commitment to continuous training and staying updated with industry standards.

5. Project Management:

- Efficient coordination and communication with project stakeholders.

- Adherence to project timelines and budget constraints.
- Flexibility to adapt to project-specific needs and challenges.

Performance within Project Limitations:

Alpha Omega Geotech is adept at managing projects within the defined limitations of time, budget, and scope. Our systematic approach ensures that all tasks are completed efficiently without compromising on quality. Key aspects include:

- **Timely Execution:**
 - Prompt site mobilization and efficient fieldwork execution.
 - Laboratory testing results delivered within agreed timelines.
 - Regular updates and clear communication to keep all parties informed.
- **Cost-Effective Solutions:**
 - Optimized resource utilization to minimize costs.
 - Innovative approaches to overcome site-specific challenges.
 - Value engineering to provide cost savings without sacrificing quality.
- **Quality Assurance:**
 - Strict adherence to industry standards and best practices.
 - Comprehensive quality control measures at every project stage.
 - Detailed documentation and transparent reporting.

Alpha Omega Geotech's 41 years of expertise, combined with our state-of-the-art facilities and dedicated team, ensure we deliver exceptional geotechnical, testing, and inspection services tailored to meet the specific needs and limitations of any project.

Here are three examples of work performed by Alpha Omega Geotech that highlight our control of costs, quality of work, and ability to meet schedules:

1. Lenexa Justice Center**Project Overview:**

- A new municipal complex consisting of a courthouse, police station, and public safety facilities.

Control of Costs:

- Alpha Omega Geotech provided value engineering recommendations that optimized the foundation design, resulting in significant cost savings for the client.
- Conducted thorough site investigations to minimize unforeseen subsurface conditions, reducing the likelihood of costly change orders.

Quality of Work:

- Comprehensive geotechnical analysis and detailed reporting ensured the design met all necessary safety and performance standards.
- Rigorous quality control procedures during construction, including frequent inspections and material testing, maintained the integrity of the project.

Ability to Meet Schedules:

- Coordinated closely with the project team to align our fieldwork and reporting with the overall project timeline.
- Delivered geotechnical reports and inspection results ahead of schedule, allowing the construction team to proceed without delays.

2. Hallbrook Country Club**Project Overview:**

- Renovation and expansion of an exclusive country club, including new facilities and improved infrastructure.

Control of Costs:

- Implemented efficient soil stabilization techniques to address challenging site conditions, reducing the need for expensive over-excavation and replacement.
- Provided cost-effective solutions for foundation design, balancing performance and budget constraints.

Quality of Work:

- Ensured high standards of workmanship through meticulous testing of concrete, masonry, and other materials used in the project.
- Conducted regular site inspections to verify compliance with design specifications and industry standards.

Ability to Meet Schedules:

- Maintained an aggressive testing and inspection schedule to keep pace with the fast-tracked construction timeline.
- Collaborated with the contractor to prioritize critical path activities, ensuring timely completion of key project milestones.

3. Kansas City Kansas Community College Education, Health & Wellness Center**Project Overview:**

- Construction of a state-of-the-art educational and wellness facility aimed at serving the community and student body.

Control of Costs:

- Offered alternative foundation designs that reduced material costs without compromising structural integrity.
- Identified and mitigated potential geotechnical risks early in the project, preventing costly delays and rework.

Quality of Work:

- Deployed advanced testing methodologies to ensure the highest quality of materials and workmanship.
- Implemented a robust quality assurance program, including third-party verification of critical inspections and tests.

Ability to Meet Schedules:

- Adjusted our inspection schedules to accommodate the project's phased construction approach, ensuring no disruption to ongoing activities.
- Provided expedited laboratory testing services to support rapid decision-making and keep the project on track.

REFERENCES

The City of Pleasant Hill can verify the exemplary service and technical expertise of AOG—and our ability to work well with both contractors and Owners—by contacting our references.

CITY OF OVERLAND PARK

Mike Burton
Parks + Recreation Project Manager
11921 Hardy Street
Overland Park, KS 66213
mike.burton@opkansas.org
913-344-8657

CITY OF RIVERSIDE, MISSOURI

Noel C Bennion
Capital Projects and Parks Manager
2950 N.W. Vivion Road
Riverside, MO 64150
NBENNION@riversidemo.com
(816) 741-3993

CITY OF PLATTE CITY

Ryan Crowley, MBA, CPSI, AFO
Public Works Director
400 Main Street
Platte City, Missouri 64079
rcrowley@plattcecity.org
(816) 858-5627

CITY OF LENEXA

Thomas R. Nolte, Council Member Ward 2
17101 W 87th St Ste 201
Lenexa, Kansas, 66201
tnolte@noltearch.com
913.322.2444



Highlighted PROJECTS

- Lenexa Justice Center
- Lee's Summit Fire Station
- Leavenworth County- EMS Station #3
- Lenexa Fire Station #3
- Shawnee Fire Station #5, 71 & 73
- Raytown Fire Station
- Independence Fire Station #3 & 4
- Lawrence Fire Station #3
- North Kansas City, Missouri Fire Station #1
- Platte City - City Hall & Police Headquarters
- Kansas City, Missouri Police Headquarters
- Springhill Police Station
- Cass County Jail
- Douglas County Jail
- Grant County Jail
- Charles E. Whittaker U.S. Courthouse
- Jackson County Courthouse
- Leavenworth Courthouse

***“AOG is easy to work with, highly responsive,
and are willing to look at multiple
solutions to a problem.”***

Justin Milburn, Milburn Engineering

APPENDIX A

DISCLOSURE

Conflict of Interest Disclosure Statement

Alpha-Omega Geotech (AOG) hereby confirms that we have no professional or personal financial interest that would create a conflict of interest in contracting with the City of Pleasant Hill, Missouri. We are committed to maintaining the highest level of integrity and transparency in all of our professional relationships.

APPENDIX B

GENERAL AND PROFESSIONAL LIABILITY INSURANCE

Alpha Omega Geotech, Inc. has maintained continuous insurance coverage since its founding in 1982. We currently have General, Automobile, and Umbrella coverages through Travelers Indemnity, Property & Casualty Company, and Professional Liability from Admiral Insurance company.

Included are copies of our insurance certificates showing coverages and expiration dates for those policies.



CERTIFICATE OF LIABILITY INSURANCE

DATE (MM/DD/YYYY)

6/17/2024

THIS CERTIFICATE IS ISSUED AS A MATTER OF INFORMATION ONLY AND CONFERS NO RIGHTS UPON THE CERTIFICATE HOLDER. THIS CERTIFICATE DOES NOT AFFIRMATIVELY OR NEGATIVELY AMEND, EXTEND OR ALTER THE COVERAGE AFFORDED BY THE POLICIES BELOW. THIS CERTIFICATE OF INSURANCE DOES NOT CONSTITUTE A CONTRACT BETWEEN THE ISSUING INSURER(S), AUTHORIZED REPRESENTATIVE OR PRODUCER, AND THE CERTIFICATE HOLDER.

IMPORTANT: If the certificate holder is an ADDITIONAL INSURED, the policy(ies) must have ADDITIONAL INSURED provisions or be endorsed. If SUBROGATION IS WAIVED, subject to the terms and conditions of the policy, certain policies may require an endorsement. A statement on this certificate does not confer rights to the certificate holder in lieu of such endorsement(s).

PRODUCER Holmes Murphy & Associates 2727 Grand Prairie Parkway Waukegan IA 50263		CONTACT NAME: Monica Wilks PHONE (A/C, No, Ext): 816-857-7820 E-MAIL ADDRESS: mwilks@holmesmurphy.com FAX (A/C, No):	
		INSURER(S) AFFORDING COVERAGE	
		INSURER A: Berkley Insurance Company	
		INSURER B:	
		INSURER C:	
		INSURER D:	
		INSURER E:	
		INSURER F:	

COVERAGES **CERTIFICATE NUMBER:** 1422238621 **REVISION NUMBER:**

THIS IS TO CERTIFY THAT THE POLICIES OF INSURANCE LISTED BELOW HAVE BEEN ISSUED TO THE INSURED NAMED ABOVE FOR THE POLICY PERIOD INDICATED. NOTWITHSTANDING ANY REQUIREMENT, TERM OR CONDITION OF ANY CONTRACT OR OTHER DOCUMENT WITH RESPECT TO WHICH THIS CERTIFICATE MAY BE ISSUED OR MAY PERTAIN, THE INSURANCE AFFORDED BY THE POLICIES DESCRIBED HEREIN IS SUBJECT TO ALL THE TERMS, EXCLUSIONS AND CONDITIONS OF SUCH POLICIES. LIMITS SHOWN MAY HAVE BEEN REDUCED BY PAID CLAIMS.

INSR LTR	TYPE OF INSURANCE	ADDL INSD	SUBR WVD	POLICY NUMBER	POLICY EFF (MM/DD/YYYY)	POLICY EXP (MM/DD/YYYY)	LIMITS
	COMMERCIAL GENERAL LIABILITY <input type="checkbox"/> CLAIMS-MADE <input type="checkbox"/> OCCUR GEN'L AGGREGATE LIMIT APPLIES PER: <input type="checkbox"/> POLICY <input type="checkbox"/> PRO-JECT <input type="checkbox"/> LOC OTHER:						EACH OCCURRENCE DAMAGE TO RENTED PREMISES (Ea occurrence) \$ MED EXP (Any one person) \$ PERSONAL & ADV INJURY \$ GENERAL AGGREGATE \$ PRODUCTS - COMP/OP AGG \$ OTHER \$
	AUTOMOBILE LIABILITY <input type="checkbox"/> ANY AUTO <input type="checkbox"/> OWNED AUTOS ONLY <input type="checkbox"/> SCHEDULED AUTOS <input type="checkbox"/> HIRED AUTOS ONLY <input type="checkbox"/> NON-OWNED AUTOS ONLY						COMBINED SINGLE LIMIT (Ea accident) \$ BODILY INJURY (Per person) \$ BODILY INJURY (Per accident) \$ PROPERTY DAMAGE (Per accident) \$ OTHER \$
	UMBRELLA LIAB <input type="checkbox"/> OCCUR EXCESS LIAB <input type="checkbox"/> CLAIMS-MADE DED RETENTION \$						EACH OCCURRENCE \$ AGGREGATE \$ OTHER \$
	WORKERS COMPENSATION AND EMPLOYERS' LIABILITY ANY PROPRIETOR/PARTNER/EXECUTIVE OFFICER/MEMBER EXCLUDED? (Mandatory in NH) <input type="checkbox"/> Y/N If yes, describe under DESCRIPTION OF OPERATIONS below		N/A				PER STATUTE <input type="checkbox"/> OTH-ER <input type="checkbox"/> E.L. EACH ACCIDENT \$ E.L. DISEASE - EA EMPLOYEE \$ E.L. DISEASE - POLICY LIMIT \$
A	Professional Liability Claims Made			AEC907890103	7/20/2024	7/20/2025	Each Claim Annl Aggr 2,000,000 2,000,000

DESCRIPTION OF OPERATIONS / LOCATIONS / VEHICLES (ACORD 101, Additional Remarks Schedule, may be attached if more space is required)

CERTIFICATE HOLDER	CANCELLATION SHOULD ANY OF THE ABOVE DESCRIBED POLICIES BE CANCELLED BEFORE THE EXPIRATION DATE THEREOF, NOTICE WILL BE DELIVERED IN ACCORDANCE WITH THE POLICY PROVISIONS. AUTHORIZED REPRESENTATIVE <i>Kari Coaling</i>
---------------------------	---

© 1988-2015 ACORD CORPORATION. All rights reserved.

ACORDTM**CERTIFICATE OF LIABILITY INSURANCE**

DATE (MM/DD/YYYY)

9/28/2023

THIS CERTIFICATE IS ISSUED AS A MATTER OF INFORMATION ONLY AND CONFERS NO RIGHTS UPON THE CERTIFICATE HOLDER. THIS CERTIFICATE DOES NOT AFFIRMATIVELY OR NEGATIVELY AMEND, EXTEND OR ALTER THE COVERAGE AFFORDED BY THE POLICIES BELOW. THIS CERTIFICATE OF INSURANCE DOES NOT CONSTITUTE A CONTRACT BETWEEN THE ISSUING INSURER(S), AUTHORIZED REPRESENTATIVE OR PRODUCER, AND THE CERTIFICATE HOLDER.

IMPORTANT: If the certificate holder is an ADDITIONAL INSURED, the policy(ies) must have ADDITIONAL INSURED provisions or be endorsed. If SUBROGATION IS WAIVED, subject to the terms and conditions of the policy, certain policies may require an endorsement. A statement on this certificate does not confer any rights to the certificate holder in lieu of such endorsement(s).

PRODUCER Haas & Wilkerson Insurance 4300 Shawnee Mission Parkway Fairway, KS 66205 913 432-4400	CONTACT NAME: Patty Adams, CISR PHONE (A/C, No, Ext): 913.676.9224 FAX (A/C, No): 913.432.6159 E-MAIL ADDRESS: hwcertificates@hwins.com														
INSURED Alpha Omega Geotech, Inc. 1701 State Ave Kansas City, KS 66102	<table border="1"> <thead> <tr> <th>INSURER(S) AFFORDING COVERAGE</th> <th>NAIC #</th> </tr> </thead> <tbody> <tr> <td>INSURER A : Transportation Insurance Company</td> <td>20494</td> </tr> <tr> <td>INSURER B : Continental Insurance Company</td> <td>35289</td> </tr> <tr> <td>INSURER C : National Fire Ins of Hartford</td> <td>20478</td> </tr> <tr> <td>INSURER D :</td> <td></td> </tr> <tr> <td>INSURER E :</td> <td></td> </tr> <tr> <td>INSURER F :</td> <td></td> </tr> </tbody> </table>	INSURER(S) AFFORDING COVERAGE	NAIC #	INSURER A : Transportation Insurance Company	20494	INSURER B : Continental Insurance Company	35289	INSURER C : National Fire Ins of Hartford	20478	INSURER D :		INSURER E :		INSURER F :	
INSURER(S) AFFORDING COVERAGE	NAIC #														
INSURER A : Transportation Insurance Company	20494														
INSURER B : Continental Insurance Company	35289														
INSURER C : National Fire Ins of Hartford	20478														
INSURER D :															
INSURER E :															
INSURER F :															

COVERAGES**CERTIFICATE NUMBER:****REVISION NUMBER:**

THIS IS TO CERTIFY THAT THE POLICIES OF INSURANCE LISTED BELOW HAVE BEEN ISSUED TO THE INSURED NAMED ABOVE FOR THE POLICY PERIOD INDICATED. NOTWITHSTANDING ANY REQUIREMENT, TERM OR CONDITION OF ANY CONTRACT OR OTHER DOCUMENT WITH RESPECT TO WHICH THIS CERTIFICATE MAY BE ISSUED OR MAY PERTAIN, THE INSURANCE AFFORDED BY THE POLICIES DESCRIBED HEREIN IS SUBJECT TO ALL THE TERMS, EXCLUSIONS AND CONDITIONS OF SUCH POLICIES. LIMITS SHOWN MAY HAVE BEEN REDUCED BY PAID CLAIMS.

INSR LTR	TYPE OF INSURANCE	ADDL INSR	SUBR WVD	POLICY NUMBER	POLICY EFF (MM/DD/YYYY)	POLICY EXP (MM/DD/YYYY)	LIMITS
A	<input checked="" type="checkbox"/> COMMERCIAL GENERAL LIABILITY <input type="checkbox"/> CLAIMS-MADE <input checked="" type="checkbox"/> OCCUR GEN'L AGGREGATE LIMIT APPLIES PER: <input type="checkbox"/> POLICY <input checked="" type="checkbox"/> PRO-JECT <input checked="" type="checkbox"/> LOC OTHER:			6079405331	10/01/2023	10/01/2024	EACH OCCURRENCE \$1,000,000 DAMAGE TO RENTED PREMISES (Ea occurrence) \$100,000 MED EXP (Any one person) \$15,000 PERSONAL & ADV INJURY \$1,000,000 GENERAL AGGREGATE \$2,000,000 PRODUCTS - COMP/OP AGG \$2,000,000 \$
B	AUTOMOBILE LIABILITY <input checked="" type="checkbox"/> ANY AUTO OWNED AUTOS ONLY <input checked="" type="checkbox"/> HIRED AUTOS ONLY <input type="checkbox"/> SCHEDULED AUTOS NON-OWNED AUTOS ONLY			6079405328	10/01/2023	10/01/2024	COMBINED SINGLE LIMIT (Ea accident) \$1,000,000 BODILY INJURY (Per person) \$ BODILY INJURY (Per accident) \$ PROPERTY DAMAGE (Per accident) \$ \$
B	<input checked="" type="checkbox"/> UMBRELLA LIAB <input checked="" type="checkbox"/> EXCESS LIAB <input type="checkbox"/> CLAIMS-MADE DED <input checked="" type="checkbox"/> RETENTION \$10000			6079405345	10/01/2023	10/01/2024	EACH OCCURRENCE \$5,000,000 AGGREGATE \$5,000,000 \$
C	WORKERS COMPENSATION AND EMPLOYERS' LIABILITY ANY PROPRIETOR/PARTNER/EXECUTIVE OFFICER/MEMBER EXCLUDED? <input type="checkbox"/> Y <input checked="" type="checkbox"/> N (Mandatory in NH) If yes, describe under DESCRIPTION OF OPERATIONS below		N/A	WC679405359	10/01/2023	10/01/2024	<input checked="" type="checkbox"/> PER STATUTE <input type="checkbox"/> OTH-ER E.L. EACH ACCIDENT \$1,000,000 E.L. DISEASE - EA EMPLOYEE \$1,000,000 E.L. DISEASE - POLICY LIMIT \$1,000,000

DESCRIPTION OF OPERATIONS / LOCATIONS / VEHICLES (ACORD 101, Additional Remarks Schedule, may be attached if more space is required)

CERTIFICATE HOLDER**CANCELLATION****PROOF OF COVERAGE**

SHOULD ANY OF THE ABOVE DESCRIBED POLICIES BE CANCELLED BEFORE THE EXPIRATION DATE THEREOF, NOTICE WILL BE DELIVERED IN ACCORDANCE WITH THE POLICY PROVISIONS.

AUTHORIZED REPRESENTATIVE

William R. Adams III

APPENDIX C

QUALIFICATIONS DATA FORM



Qualification Data Form

Name of Firm or Individual: Alpha Omega Geotech

Address: 1701 State Avenue, Kansas City, KS 66102

Firm Point of Contact: Dave Flessner

Telephone: 913.433.3623 mobile
913.371.0000 Office Email: dflessner@aogeotech.com

Specify the Number of Employees: 30

Professional Engineers	3
Soil Technicians	15

****Attach Additional Personnel List with Specialties**



City of Pleasant Hill
Request For Qualifications

Services in which are being applied for and Degree of Experience (1-5):

- 5 = Specialty
- 4 = Extensive Experience
- 3 = Average Experience
- 2 = Some Experience
- 1 = Unqualified

Please elaborate on your level of experience and attach to your proposal.

Service	Degree of Experience or N/A
Geotechnical Services	See attached

Signature: David Flessner

Date Prepared: 10/07/24

APPENDIX D

AUTHORIZATION FORM

AUTHORIZATION FORM

Project: City of Pleasant Hill, MO - ON-CALL GEOTECHNICAL SERVICES

Date: October 8, 2024

Reference No.: RFQ NO. 04-24

Prepared by Dave Flessner

Alpha-Omega Geotech, Inc.

1701 State Avenue, Kansas City, KS 66102

dflessner@aogetech.com

www.aogetech.com

To authorize the scope of services described in the above-referenced proposal, please return an executed copy of this signature sheet to our office via email, fax, or mail. Electronic signatures are acceptable. If you have any questions regarding this proposal, please call us at (913) 371-0000.

ACCEPTED BY:

Client (please print):

Address of Client:

Representative:

Phone Number:

Fax Number:

Email:

Signature of Representative:

Please note that an authorized representative of the client and not another party acting as an agent of the client must execute this agreement. All services rendered under this agreement will be provided in accordance with the enclosed terms and conditions on behalf of the client and invoices will be submitted to the address given above.

This page has been left blank intentionally.