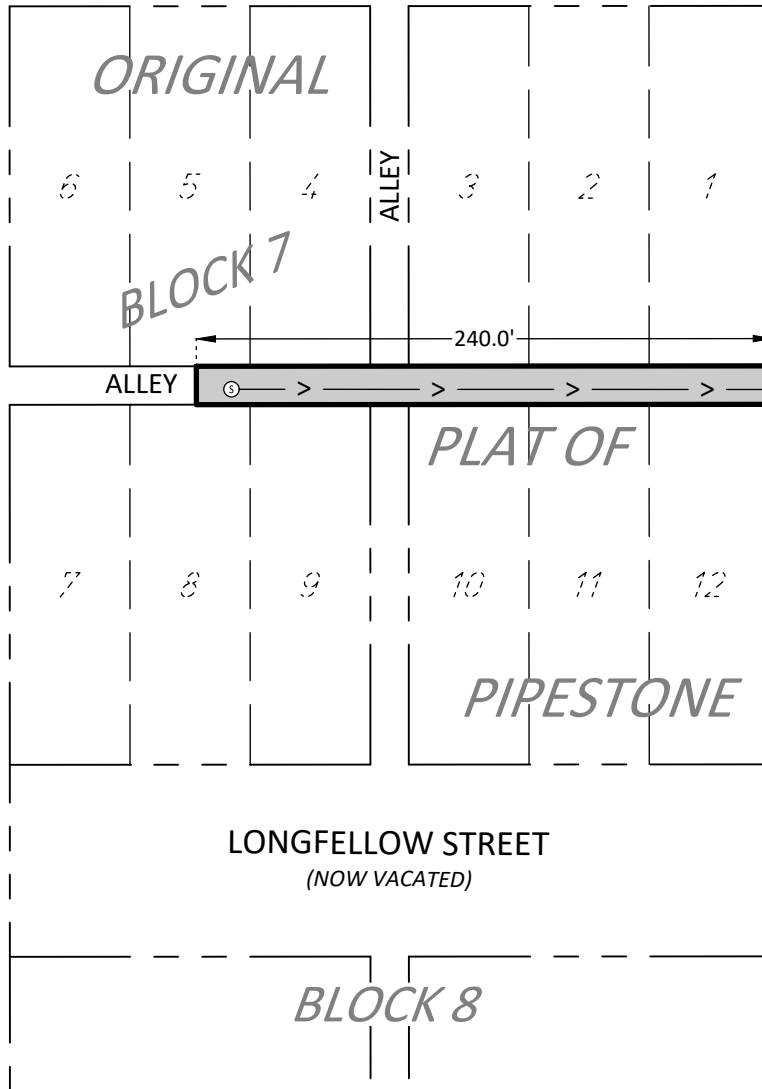


4TH STREET NW
(PLATTED AS PILLSBURY STREET)

5TH AVENUE NW
(PLATTED AS EMMA STREET)

4TH AVENUE NW
(PLATTED AS HELEN STREET)



ORIGINAL

BLOCK 7

PLAT OF

PIPESTONE

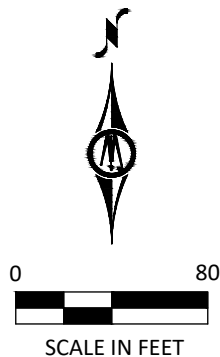
BLOCK 6

BLOCK 8

LONGFELLOW STREET
(NOW VACATED)

EASEMENT AREA:

The East 240.00 feet of the east-west alley in Block 7, Original Plat of the City of Pipestone, according to the plat thereof on file and of record in the Office of the County Recorder, Pipestone County, Minnesota.



SURVEYOR'S CERTIFICATION

I hereby certify that this survey, plan, or report was prepared by me or under my direct supervision and that I am a duly Licensed Land Surveyor under the laws of the State of Minnesota.

Joseph A. Haefner
Joseph A. Haefner
License Number 43909

4/28/2026
Date

©Bolton & Menk, Inc. 2026, All Rights Reserved

EASEMENT EXHIBIT
CITY OF PIPESTONE, MINNESOTA

BLOCK 7, ORIGINAL PLAT OF PIPESTONE
PIPESTONE COUNTY, MINNESOTA



1501 South State Street, Suite 100
Fairmont, MN 56031
Phone: (507) 238-4738

FOR: PIPESTONE, CITY OF